



Ingxelo Yonyaka

2016/2017



▲ The Sound of Music

Iziqulatho

INDIMA A

1. Iinkcukacha zeziko likarhulumente ngokubanzi 2
2. Uluhlu lwezifinyezo/Amagama akhiwe ngoonobumba bokuqala 2
3. Inkcazelo 3
4. Amagunya omthetho namanye 4
5. Ubume bezikhundla zeziko 4
6. Ingabula-zigcawu kaSihlalo 5
7. Inkcazelo yeNgqonyela 6
8. Ingxelo yoxanduva kunye nokuqinisekiswa kokunyaniseka kwengxelo yonyaka 25

INDIMA B: IINKCUKACHA ZOKUSEBENZA

1. Ingxelo yoxanduva yeenkcukacha zokusebenza 26
2. Ingxelo yoMphicothi-zincwadi: linjongo ezimiswe ngenx'engaphambili 27
3. Iinkcukacha zokusebenza kwenkqubo nganye 27
4. Isishwankathelo seenkcukacha zemali 36

INDIMA C: ULAWULO

1. Intshayelelo 38
2. Ibhunga 38
3. Ulawulo lobungozi 40
4. Icandelo lolawulo lwangaphakathi 40
5. Icandelo loPhicotho-zincwadi lwangaphakathi 40
6. Ikomiti yoPhicotho-zincwadi noLawulo 41
7. Ukuthobela imithetho nemimiselo 41
8. Urhwaphilizo nobuqhophololo 41
9. Ukunciphisa imbambano yemidla 41
10. Umgaqo wokuziphatha 42
11. Imiba yezempilo, eyokhuseleko kunye neyokusingqongileyo 42
12. Uxanduva lwasekuhlaleni 42
13. Ingxelo yeKomiti yoPhicotho-zincwadi 43

INDIMA D: ULAWULO LWEMICIMBI YABASEBENZI

1. Iinkcukacha-manani zobongameli bolawulo lwemicimbi yabasebenzi 47

INDIMA E: IINKCUKACHA ZEMALI

1. Ingxelo yoxanduva 50
2. Ingxelo yeNgqonyela 51
3. Ingxelo yoMphicothi-zincwadi Jikelele 52
4. Ingxelo zemali zonyaka 55

Indima A

1. IINKCUKACHA ZEZIKO NGOKUBANZI

Igama elibhalisiweyo:	The Playhouse Company
Idilesi elizinze kulo:	29 Acutt Street, Durban, 4001
Idilesi yeposi:	P O Box 5353, Durban, 4000
Inombolo yomnxeba:	+27 (0)31 369 9555
Inombolo yefeksi:	+27 (0)31 306 2166
Idilesi ye-imeyili:	cfo@playhousecompany.com
Idilesi ye-website:	www.playhousecompany.com
Abaphicothi-zincwadi bangaphandle:	The Auditor-General of South Africa
Ibhanka:	First National Bank

2. ULUHLU LWEZIFINYEZO/AMAGAMA AKHIWE NGOONOBUMBA BOKUQALA

CEO	ISebe lezoBugcisa neNkcubeko
CFO	iGosa eliyiNtloko yeZemali
DAC	ISebe lezoBugcisa neNkcubeko
PFMA	uMthetho woLawulo lweMali kaRhulumente
MTEF	iNkqubo-sikhokelo yeNkcitho yeSigaba esiPhakathi
SAWAF	uMnyhadala wobugcisa wamabhinqa aseMzantsi Afrika
SCM	Ulawulo lokunikwa kweenkonzo neziniki-maxabiso

3. INKCAZELO

3.1. Umbono

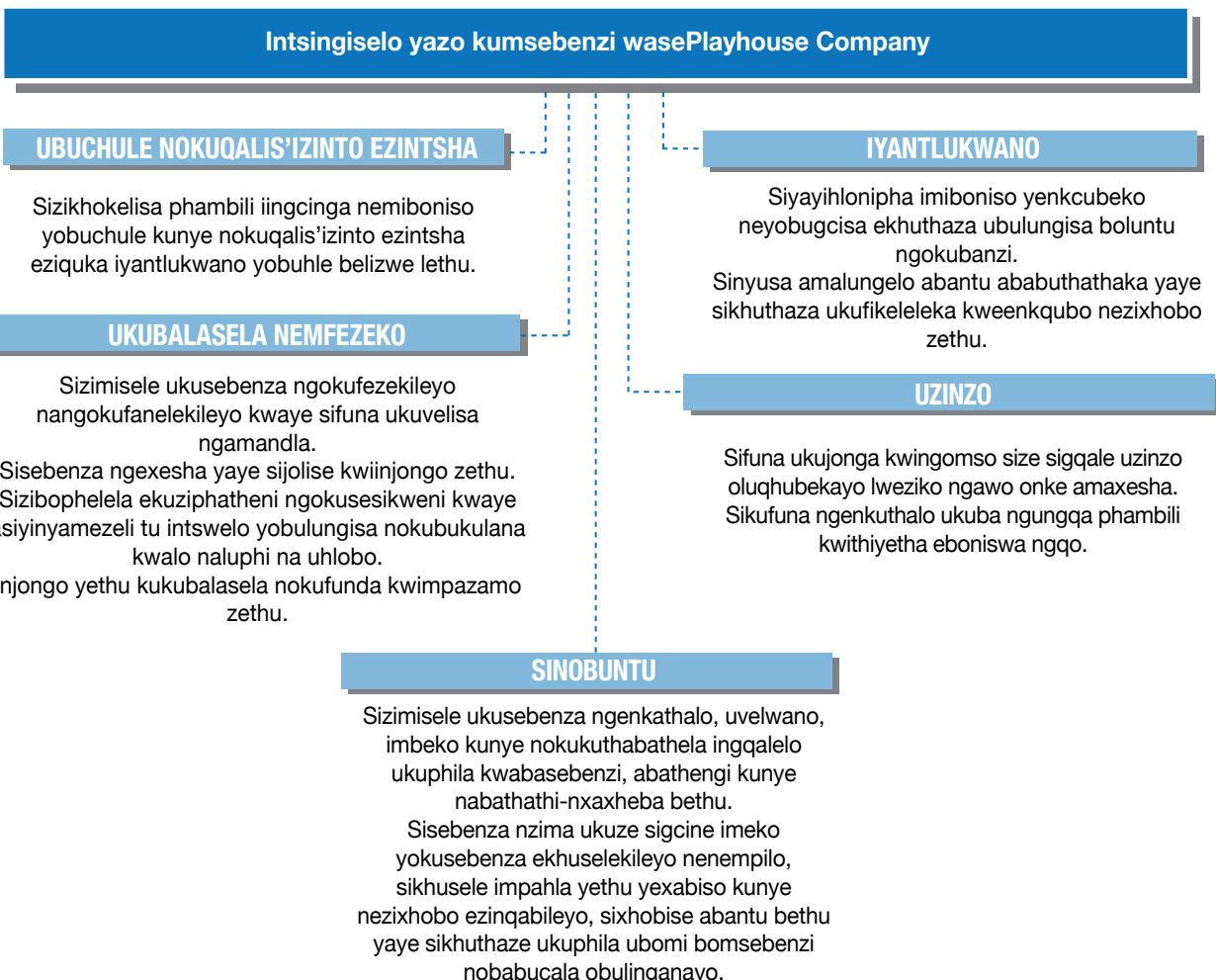
Ukukhuthaza nokwakha ukugqwesa kwezobugcisa kunye neyantlukwano yenkcubeko kubugcisa obuboniswayo.

3.2. Injongo

Ukuphumeza lo mbono ungasentla, iPlayhouse Company iyichaza injongo yayo ngolu hlobo: Siphucula, sikhuthaza kwaye silondololoza ubugcisa obuboniswayo ngokwenza oku kulandelayo:

- Ukuvelisa, ukuvelisa kunye nabanye kwakunye nokubonisa iimveliso ezinobugcisa, ezonwabisayo
- nezifundisayo kubabukeli abohlukahlukeneyo nabakhula ngamandla;
- Ukuqwalasela umanyano ngokwentlalo, ukwahluka kwabantu kunye nokuqukwa ngomsebenzi wethu;
- Ukujolisa iimveliso zethu kubabukeli abaziindidi ngeendidi ngokusebenzisa indlela ejoliswe ngqo kwintengiso nakubathengi;
- Ukumilisele uthando lobugcisa obuboniswayo, ukusungula ababukeli bengomso kwakunye nokugunyazisa iimveliso eziveliswe ekhaya;
- Ukuxhasa imfundo, uqeqesho kunye nophuhliso lwezakhono zamagcisa, iingcali zobugcisa kunye nabasebenzi;
- Ukusebenzisana namahlakane asekuhlaleni, akuzwelonke, engingqi kunye nawamazwe ngamazwe
- ukunwenwisa ifuthe leenkqubo zethu;
- Ukuphucula uzinzo ngokwasezimalini ngokusebenzisa iinkqubo ezihlangabezanayo zoshishino nezeenguqu; kwakunye
- Nokuqinisekisa ukhuseleko lwebhakana yembali eyiDurban Playhouse.

3.3. Iinqobo ezisemgangathweni

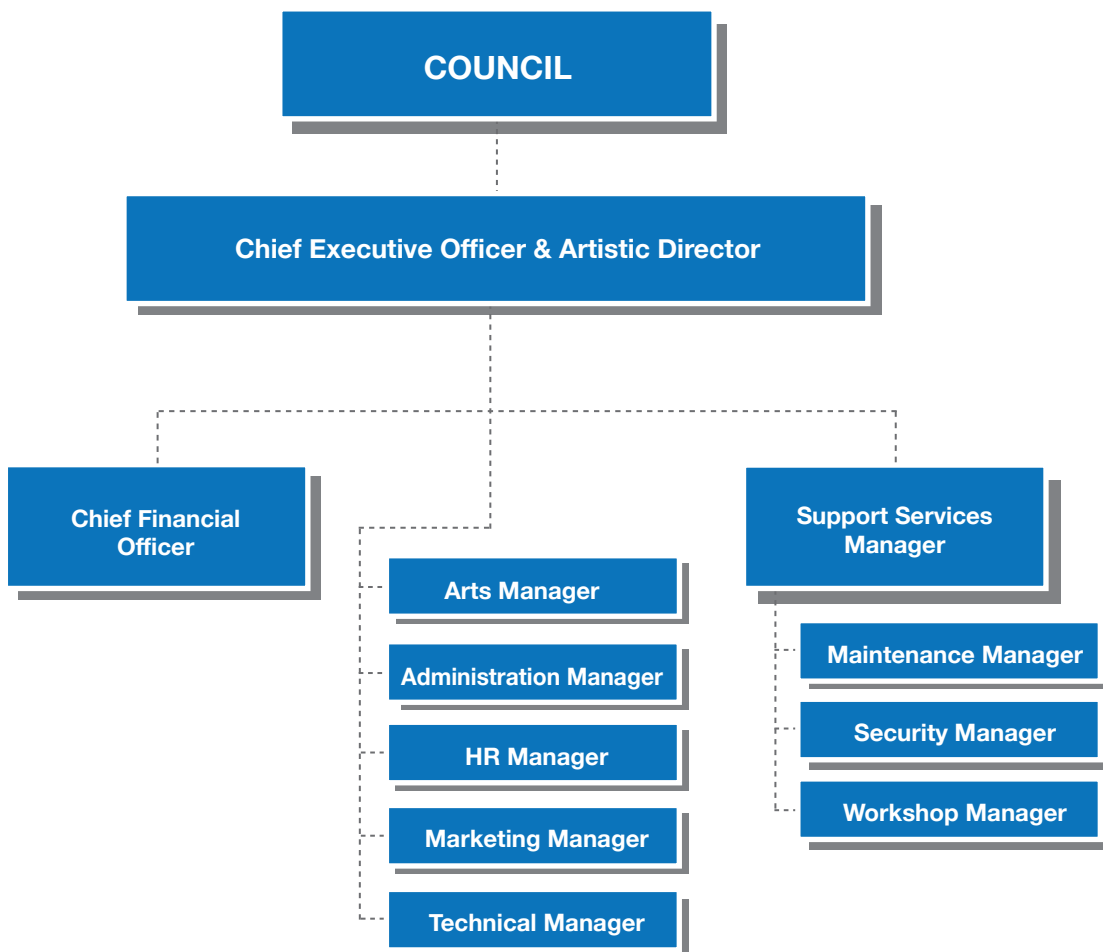


4. AMAGUNYA OMTHETHO NAMANYE AMAGUNYA

Ngokwecandelo lesi-8(5) loMthetho wamaZiko eNkcubeko we-119 ka-1998, uxanduva lwePlayhouse Company kukuphucula, ukukhuthaza nokulondoloza ubugcisa obuboniswayo eMzantsi Afrika. I-Playhouse Company isebenza phantsi kwemithetho eyahlukahlukeneyo equka phakathi kweminye:

- UMthetho woLawulo lweMali kaRhulumente (PFMA)
- UMthetho woKwahlulwa kweNgeniso (DORA)
- UMthetho wamaZiko eNkcubeko
- UMthetho woKhuseleko lwaBathengi (wama-68 ka-2008);
- UMthetho weNkqubo-sikhokelo yoNxulumano lwamaSebe kaRhulumente (we-13 ka-2005);
- UMthetho woNxulumano nabasebenzi (LRA)
- UMthetho weeMeko zeNkonzo eziSisiseko (BCSA)
- UMthetho weZempilo noKhuseleko eMsebenzini (OHSA)
- UMthetho weMimiselo yoLawulo Jikelele (GARA)
- UMthetho oKhuthaza uKufikelela kuLwazi (PAIA)
- UMthetho oKhuthaza uKuphathwa koBulungisa (PAJA)
- UMthetho woBulungisa kwezeNgqesho
- UMthetho woKhuseleko lweeNkcukacha zoMntu ngenkqu
- Yonke imimiselo, imiyalelo kunye neenkqubo-sikhokelo zikaNondyebo njengoko zipapashiwe
- Yonke imithetho kamasipala kunye nemithetho yengingqi ephathelele kwiPlayhouse Company nemisebenzi yayo

5. UBUME BEZIKHUNDLA ZEZIKO



6. INGABULA-ZIGCAWU KASIHHLALO

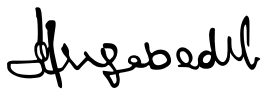
I-Playhouse liziko elinika ulonwabo olusemgangathweni nelithe gqolo ukusingatha iimbilasane zecandelo lezolonwabo eMzantsi Afrika nezangaphaya kwemida yeli. Eli ziko likwayindawo yabalinganiswa, abadanisi kunye neemvumi ezisakhasayo yaye liyindawo apho amagcisa aziimbilasane nazuzo iimbasa athi ahlanganyele khona ukuze abonise iitalente zawo.

Ndinemincili ukuxela okokuba unyaka ophengululwayo ka-2016/17 ube ngunyaka oyimpumelelo ePlayhouse Company kuba eli ziko liphumelele ukufezekisa iinjongo zazo zonke iindawo ezingundoqo kumsebenzi walo wokukhuthaza nokulondoloza ubugcisa obuboniswayo.

Amalungu eBhunga lasePlayhouse Company ayazingca ngempumelelo yeli ziko yaye ngentsebenziswano nabaphathi abaphezulu baqulunqe icebo leziko baza bavavanya ubungozi kunyaka apho sibhiyozela umanyano kwiyantlukwano yethu. Sisonke kunye nabemi baseMzantsi Afrika sibhiyozele ukufinca iminyaka engama-60 emva komngcelele wamanina ka-1956 owawusiyi ePalamente ukuya kuvakalisa izikhalazo zawo ngemithetho yocalucalulo yamapasi kwakunye nezinye izinto ezimbi ezayamene nocalucalulo. Esi siganeko sibalulekileyo sibe nefuthe kwiimveliso eziza kuboniswa ePlayhouse ngethuba lomnyhadala wamabhinqa wobugcisa.

Ndithabatha eli thuba ukugqithisa umbulelo ongazenzisiyo kubo bonke abathathi-nxaxheba basePlayhouse, kuquka abaxhasi bethu, amajelo eendaba, kunye nabahlali baseKZN, abaseMzantsi Afrika nabehlabathi nababonise iPlayhouse inkxaso nembeko eyifaneleyo ngeendlela ezahlukahlukeneyo. Siyayibulela kakhulu le nkxaso.

Sinqwenela into yokokuba lo nyaka uzayo uzaliswe ziintsikelelo, impumelelo kunye nembeko engapheliyo yeenzame zethu zokumilisela umanyano kwiyantlukwano yethu sisebenzisa ubugcisa, inkcubeko kunye namagugu.



Nkszn. Hlengiwe Christophina Mgabadelu

USihlalo weBhunga

Test Driving the Arts





Nkszn. Linda Bukhosini
iNgqonyela kunye
noMlawuli wezoBugcisa

7. INKCAZELO YENGGQONYELA

Lo nyaka uphengululwayo ngowesi-7 iPlayhouse ifumana ingxelo engenasikhwasilima iminyaka ilandelelana ukususela ngo-2011. Imikhwa yolawulo olunobulungisa ingundoqo kuwo onke amanqanaba ethu emisebenzi.

INKQUBO YOBUGCISA

I-Playhouse Company ithe gqolo ukunika inkqubo yobugcisa eyahlukahlukeneyo equka imiboniso engaphaya kwama-514 enamagcisa angaphaya kwe-15,900 abonisa phambi kwezihlewe zababukeli abohlukahlukeneyo abangaphaya kwama-250,000 kwiithiyetha zethu ezikumbindi wedolophu, ezilokishini nasezikolweni ezisemaphandleni kweli phondo. Oku kuxela ukwanda kwamathuba omsebenzi kumagcisa kwanokuvula kwawo kuluntu ngokubanzi.

Sizibophelele kuphuhliso olupheleleyo kunye nokuxabisa ubugcisa obuboniswayo ukulungiselela amagcisa kunye noluntu ngokubanzi. Ukuza kuthi ga ngoku sisebenzisa iinkqubo ezahlukahlukeneyo zokuphuhlisa izakhono kuquka iinkqubo zethu zangaphakathi zomdaniso, ezomculo kunye nedrama. Ukongeza kwezi nkqubo sikwanika iinkqubo

zongenelelo ezibhentsisa ubugcisa, ezifundisa ngobugcisa kwakunye nokufundisa abafundi bephondo laKwaZulu-Natala ukusebenza ngobuchule. Ukuba ngaba ibingekho inkxaso-mali esiyifumana minyaka le kumacandelo karhulumente omathathu bezingasokuze zibekho ezi nkqubo zokufundisa nokuphuhlisa ngobugcisa. Siyibulela ngokungenamkhinkqi le nkxaso-mali yeenkqubo zobugcisa evela kurhulumente.

Ukukhuthaza nokulondoloza ubugcisa bomthonyama kwakunye nokuphawula igalelo lobugcisa elenziwa ngamanina zizinto ezingundoqo kumiliseliso lweenkqubo zethu. NgeyeThupha ePlayhouse sibhiyozela iminyaka engama-20 ye*Women's Arts Festival* ukanti ngeyoMsintsi sibhiyozela iminyaka engama-21 yomnyhadala wesicathamiya.



Sinika ingqalelo eyodwa kuphuhliso nokubonisa iimveliso ezintsha zaseMzantsi Afrika ngenyanga kaCanzibe. Ezinye izinto ezibalulekileyo kukubonisa iimveliso ezinethuba loshishino ezifana ne*The Sound of Music* kunye ne*Shall We Dance* kwakunye nokuvulela abavelisi abazimeleyo iithiyetha zethu. Kubaluleke kakhulu oku njengoko kunegalelo kwingeniso yendawo yokubhukishela izihlalo, uphuhliso lwababukeli kunye nokudala amathuba engqesho.

Elokugqiba, siyiPlayhouse Company sithembisa ukuqhubeka neenzame zethu zokutyebisa ubomi babahlali sisebenzisa ubugcisa obuboniswayo. Inkxaso nentsebenziswano eqhubekayo esiyifumana kurhulumente, kwiBhunga, abasebenzi abazinikeleyo, uluntu olukwicandelo lobugcisa obuboniswayo kwakunye nabathathi-nxaxheba bethu abohlukahlukeneyo kuquka amajelo eendaba kunye nabaxhasi bethu abathembekileyo ibaluleke kakhulu kumsebenzi wethu wokulondoloza, ukunika kunye nokukhuthaza amagugu ethu atyebileyo obugcisa. Siyaqhubeka nokubongoza amashishini abucala ukuba anike inkxaso-mali kubugcisa obuboniswayo njengoko abahlali abangamachule nabasungula izinto ezintsha benegalelo elikhulu kuqoqosho olunamandla noluzinzileyo.

Nkszn Linda Bukhosini

[INGqonyela kwanoMlawuli wezoBugcisa](#)

	AMAGCISA	IIMVELISO	IMIBONISO	ABABUKELI
Ezangaphakathi	4 332	58	181	74 090
Iqonga Elijikelezayo	1 545	4	54	82 596
Ezentsebenziswano	400	28	152	42 879
Ukuqeshisa Ngaphandle	9 655	77	127	51 937
ZIZONKE	15 932	167	514	251 502



Imveliso zangaphakathi

(Zixhaswa ngemali yaye ziveliswa ngokupheleleyo yiPlayhouse Company.)

AMAQONGA AMATSHA

Eli lixesha ledrama, umdaniso kunye nomculo elinika iimveliso ezisik'umxhelo ezivela apha nakude.



▲ Sean Bovim's *Romeo's Kiss*

◀ *Cenotaph of Dan wa Moriri*



▲ **A Voice I Cannot Silence**

I-SOUTH AFRICAN WOMEN'S ARTS FESTIVAL



▲ We are Still Marching



▲ Girls' Night Out Comedy
▲ Sundowner Concert





IXESHA LEZIYOLO

▼ The Sound of Music









▲ The Game



COMMUNITY ARTS MENTORSHIP PROGRAMME





UBUGCISA BOMTHONYAMA



▲ Iscathamiya Competition

I-TEST DRIVING THE ARTS

Rhoqo ngenyanga sisingatha ikonsathi yasimahla yangexesha lesidlo sasemini size sinike iqonga kumagcisa asakhasayo asekuhlaleni.

I-SUNDOWNERS & POETRY

likonsathi zokuphola ezihamba nemibongo ezenziwa ePlayhouse emva komsebenzi rhoqo ngoLwesihlanu wokuqala enyangeni.



IIMVELISO ZEZIKOLO



▲ My Body & I

I-NATIONAL ARTS FESTIVAL

Presented by The National Lottery Fringe
Maluju Zulu
 Written and Directed by SOLOMON SHANGASA
 A Tale of love, war, and reconciliation
 5 July 10:00 | 7 July 22:30
 8 July 16:00 | 9 July 11:30 & 18:00
Gymnasium
 The National Lottery Fringe
 September 30 June - 10 July 2016

MagentaPro
Denuded Thoughts
 A new, daring, fun drama about mental illness.
 6 July 12:00 | 7 July 16:00 | 8 July 14:00
 9 July 10:00 | 10 July 14:00
Dicks
 The National Lottery Fringe
 September 30 June - 10 July 2016

U-Minds
Ten Days in a Shebeen
 A robbery gone wrong leads to the perpetrators turning on each other... and death!
 30 June 16:30 | 01 July 20:00
 2 July 12:00 | 4 July 12:30
 5 July 22:30
Gymnasium
 The National Lottery Fringe
 September 30 June - 10 July 2016

IF THE WORLD WAS LISTENING
 23 June (20h00)
 24 June (16h00 & 20h00)
 John Kani Theatre
TICKETS @ Webticket.co.za

Kwetha productions
Boy Ntulikazi
 A riveting journey of emotions and intrigue.
 30 June 20h30 | 1 July 16h00
 2 July 12h00 | 3 July 14h30
 4 July 18h30
Dicks
 The National Lottery Fringe
 September 30 June - 10 July 2016

Asazi
 A theatrical parable about the insightfulness of the elderly
 30 June 16:00 | 1 July 20:00
 2 July 14:00 | 3 July 18:00
 4 July 20:00
Masonic Back
 The National Lottery Fringe
 September 30 June - 10 July 2016

1976 Musical
 30 June 12:30 | 1 July 18:30
 2 July 22:00 | 4 July 20:30
Gymnasium
 The National Lottery Fringe
 September 30 June - 10 July 2016

Sweetie Darling
 01 June 15:00
 1 July 15:00 - 7 July 18:00
 8 July 22:00 - 1 July 18:00
 1 July 14:00 - 1 July 18:00
 7 July 18:00 - 8 July 18:00
SOLOUT HALL
 The National Lottery Fringe
 September 30 June - 10 July 2016

IIMVELISO ZANGAPHAKATHI

(Zonke iimveliso zixhaswa ngemali ngokupheleleyo yaye ziveliswa yiPlayhouse Company)

AMAGCISA	IIMVELISO	IMIBONISO	ABABUKELI
4 332	58	181	74 090

IQONGA ELIJIKELEZAYO

AMAGCISA	IIMVELISO	IMIBONISO	ABABUKELI
1 545	4	54	82 596

IIMVELISO ZENTSEBENZISWANO

(Iimveliso ezinikwa ngentsebenziswano kunye nabanye abavelisi)

Luthotho lweemveliso, iikonsathi neminyhadala yamaqhula eboniswe ngabavelisi abazimeleyo bebambisene nePlayhouse Company.

AMAGCISA	IIMVELISO	IMIBONISO	ABABUKELI
400	28	152	42 879

UKUQESHISA NGAPHANDLE

(Iimveliso kunye nemisitho ezimeleyo)

Luthotho lweemveliso, iikonsathi, iminyhadala, ukhuphiswano lweekwayala kunye nemisitho yezobugcisa eboniswe ngabavelisi abazimeleyo.

AMAGCISA	IIMVELISO	IMIBONISO	ABABUKELI
9 655	77	127	51 937

8. INGXELO YOKUTHABATH'UXANDUVA NOKUQINISEKISA UKUCHANEKA KWENGXELO YONYAKA

Ngokolwazi lwam nenkolelo yam, ndiqinisekisa oku kulandelayo:

Zonke iinkcukacha namanani abhengezwe kwiNgxelo yoNyaka ayangqinelana neeNgxelo zeMali zoNyaka eziphicothwe nguMphicothi-zincwadi Jikelele.

INgxelo yoNyaka igqibelele, ichanekile yaye akukho zinto zishiywe ngaphandle kuyo.

Ingxelo yoNyaka ilungiselelwe ngokwezikhokelo zokwenza iNgxelo yoNyaka ezikhutshwe nguNondyebo kaZwelonke. Ingxelo zeMali zoNyaka (Indima E) zilungiselewe ngokungqinelana nemigangatho yeGRAP esetyenziswa kwiziko likarhulumente. Igunya elinika ingxelo linoxanduva lokulungisa iiNgxelo zeMali zoNyaka kwanokugweba okwenziwa kwezi nkcukacha.

Igunya elinika ingxelo linoxanduva lokusungula lize limilisele inkqubo yolawulo lwangaphakathi elungiselelwe ukuze inike ingqiniseko ephathekayo yobulungisa nokuthembeka kweenkcukacha zokusebenza, iinkcukacha zemicimbi yabasebenzi kunye neeNgxelo zeMali zoNyaka.

Abaphicothi-zincwadi bangaphandle bavakalisa uluvo lwabo oluzimeleyo ngeeNgxelo zeMali zoNyaka.

Ngokoluvo lwethu, iNgxelo yoNyaka iyibonisa ngobulungisa imisebenzi, iinkcukacha zokusebenza, iinkcukacha zemicimbi yabasebenzi kunye nemicimbi yezemali yeli ziko kunyaka-mali ophela ngomhla wama-31 kweyoKwindla ngo-2017.

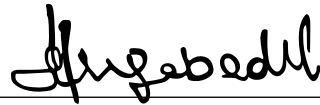
Abenu ngenene.



Nkszn Linda Bukhosini

[INGqonyela kwanoMlawuli wezobugcisa](#)

Umhla: 31 kweyeKhala 2017



Nkszn Hlengiwe Christophina Mgabedli

[USihlalo weBhunga](#)

Umhla: 31 kweyeKhala 2017

Indima B

IINKCUKACHA ZOKUSEBENZA

1. INGXELO YOKUTHABATHA UXANDUVA LWEENKCUKACHA ZOKUSEBENZA ZONYAKA OPHELE NGOWAMA-31 KWEYOKWINDLA NGO-2017

INgqonyela inoxanduva lokulungisa iinkcukacha zokusebenza kwePlayhouse Company kwakunye nokugweba okwenziwa kwezi nkcukacha.

INgqonyela inoxanduva lokusungula nokumilisela inkqubo yolawulo lwangaphakathi elungiselelwe ukunika ingqiniseko ephathekayo yobulungisa nokuthembeka kweenkcukacha zokusebenza.

INKCAZELO	INANI (%)
Inani leenjongo zonyaka zokusebenza	55
Iinjongo zonyaka zokusebenza eziphunyeziweyo	55 (100%)

Ngokoluvo lwam, ezi nkcukacha zokusebenza zibona ngobulungisa impumelelo ekhoyo ithelekiswa neenjongo ezicetyiweyo, izalathisi kunye neenjongo ezikwicwangciso sonyaka sokusebenza sePlayhouse Company sonyaka-mali ophele ngomhla wama-31 kweyoKwindla ngo-2017.

Iinkcukacha zokusebenza kwePlayhouse Company zonyaka-mali ophele ngomhla wama-31 kweyoKwindla ngo-2017 zivavanywe ngabaphicothi-zincwadi bangaphandle kwaye ingxelo yabo ikwiphepha lama-27-36.

Iinkcukacha zokusebenza kwePlayhouse Company ezikwiphepha lama-24 ukusa kwelama-32 zivunywe yiBhodi.



Nkszn Linda Bukhosini

INgqonyela kwanoMlawuli wezoBugcisa

2. INGXELO YOMPHICOTHI-ZINCWADI: IINJONGO EZIMISWE NGENX'ENGAPHAMBILI

UMphicothi-zincwadi Jikelele weloMzantsi Afrika wenza iinkqubo ezifanelekileyo zophicotho-zincwadi lweenkcukacha zokusebenza ukuze anike ingqiniseko esisiphumo sophicotho-zincwadi. Isiphumo sophicotho-zincwadi sokusebenza okuthelekiswa neenjongo ezimiswe ngenx'engaphambili siqukwa kwingxelo eya kubaphathi kwaye imiba efuna ukuphandwa ephathekayo ixelwa phantsi kwesihloko seenjongo ezimiswe ngenx'engaphambili kwingxelo yezinye izinto zomthetho eziyifuneko kwingxelo yomphicothi-zincwadi

Jonga kwiphepha lama-52 leNgcwelo yoMphicothi-zincwadi eshicilelwe njengeNdimba E: linkcukacha zemali.

3. IINKCUKACHA ZOKUSEBENZA KWENKQUBO NGANYE

3.1 Inkqubo 1: Ulawulo

3.1.1. Inkqubo ephantsi kwenye 1.1 Ulawulo lwequmrhu neZemali

A. Injongo yenkqubo: Ukunika iziko ulawulo nenkxaso yezemali.

B. Inkcazelo:

B.1 Ubume: Icandelo lezemali lilawula imicimbi yezemali, ulawulo lwequmrhu kunye nokuthotyelwa kwemithetho elawulayo.

B.2 Amacandelo anoxanduva Icandelo lezemali

linjongo ezinobuchule/ Iziphumo	lintshukumo zokufezekisa iinjongo ezinobuchule	linkcukacha ezisisiseko	Izalathisi zokusebenza ezinokulinganiswa ezinobungqina ngo- 2016/2017	Izalathisi zokusebenza ezinokulinganiswa nezinobungqina ngo- 2017/2018	Izalathisi zokusebenza ezinokulinganiswa nezinobungqina ngo- 2018/2019	Izalathisi zokusebenza ezinokulinganiswa nezinobungqina ngo- 2019/2020	Izalathisi zokusebenza ezinokulinganiswa nezinobungqina ngo- 2020/2021
Ukunika ulawulo lwezemali kunye nolawulo lwequmrhu olusebenzayo nolufanelekileyo	Ukuyithobela ngokupheleleyo imithetho ngokwegunya low-iso-mthetho nokuqinisekisa ukuba ulawulo olumiliselweyo lungqinelana nezixhobo ezikhoyo	Iziko lifumene ingxelo yophicotho-zincwadi engenasikhwasilima ngeyoKwindla ngo-2016	Ingxelo yophicotho-zincwadi engenasikhwasilima ngowama-31 kweyoKwindla	Ingxelo yophicotho-zincwadi engenasikhwasilima ngowama-31 kweyoKwindla	Ingxelo yophicotho-zincwadi engenasikhwasilima ngowama-31 kweyoKwindla	Ingxelo yophicotho-zincwadi engenasikhwasilima ngowama-31 kweyoKwindla	Ingxelo yophicotho-zincwadi engenasikhwasilima ngowama-31 kweyoKwindla
		Izinto ezifuna ukulungiswa ngeyoKwindla ngo-2016 zilungiswe kwiinyanga ezi-3	Imiba yophicotho-zincwadi efuna ukuphandwa ilungiswa kwiinyanga ezintathu iphumile ingxelo	Imiba yophicotho-zincwadi efuna ukuphandwa ilungiswa kwiinyanga ezintathu iphumile ingxelo	Imiba yophicotho-zincwadi efuna ukuphandwa ilungiswa kwiinyanga ezintathu iphumile ingxelo	Imiba yophicotho-zincwadi efuna ukuphandwa ilungiswa kwiinyanga ezintathu iphumile ingxelo	Imiba yophicotho-zincwadi efuna ukuphandwa ilungiswa kwiinyanga ezintathu iphumile ingxelo
		Izintlu zekota zokuthobela zangeyoKwindla ngo-2016 zithunyelwe ngexesha	Uluhlu lokuthobela iPFMA/ uNondyebo kaZwelonke luqosheliswarhoqo ngekota	Uluhlu lokuthobela iPFMA/ uNondyebo kaZwelonke luqosheliswarhoqo ngekota	Uluhlu lokuthobela iPFMA/ uNondyebo kaZwelonke luqosheliswarhoqo ngekota	Uluhlu lokuthobela iPFMA/ uNondyebo kaZwelonke luqosheliswarhoqo ngekota	Uluhlu lokuthobela iPFMA/ uNondyebo kaZwelonke luqosheliswarhoqo ngekota
		Izicwangciso zonyaka zokusebenza zeyoKwindla ngo-2016 zithunyelwe ngexesha	Ukuvelisa iingxelo zekota zesisicwangciso sonyaka sokusebenza	Ukuvelisa iingxelo zekota zesisicwangciso sonyaka sokusebenza	Ukuvelisa iingxelo zekota zesisicwangciso sonyaka sokusebenza	Ukuvelisa iingxelo zekota zesisicwangciso sonyaka sokusebenza	Ukuvelisa iingxelo zekota zesisicwangciso sonyaka sokusebenza

Iinjongo ezinobuchule, izalathisi zokusebenza, iinjongo ezicetyiweyo kunye nempumelelo ekhoyo

linjongo ezinobuchule	Impumelelo ekhoyo 2015-2016	Injongo ecetyiweyo 2016-2017	Impumelelo ekhoyo 2016-2017	Ukuphambuka kwinjongo ecetyiweyo ukuya kwimpumelelo ekhoyo 2016-2017	Inkcazelo yokuphambuka
Ukunika ulawulo lwezemali kunye nolawulo lwequmrhu olusebenzayo nolufanelekileyo	Iphunyeziwe. Yingxelo yophicotho-zincwadi ecocekileyo efunyenwe kunyaka ophela ngowama-31 kweyoKwindla ngo-2016	Ingxelo yophicotho-zincwadi engenasikhwasilima ngowama-31 kweyoKwindla	Iphunyeziwe. Yingxelo yophicotho-zincwadi ecocekileyo efunyenwe kunyaka ophela ngowama-31 kweyoKwindla ngo-2017	Ayikho	N/A
	Iphunyeziwe. Akukho miba yophicotho-zincwadi efuna ukuphandwa exeliweyo	Imiba yophicotho-zincwadi efuna ukuphandwa ilungiswa kwiinyanga ezintathu iphumile ingxelo	Iphunyeziwe. Akukho miba yophicotho-zincwadi efuna ukuphandwa exeliweyo	Ayikho	N/A
	Iphunyeziwe. Izintlu zokuthobela zekota zenziwe ngexesha	Uluhlu lokuthobela iPFMA/ uNondyebo kaZwelonke lwenziwa rhoqo ngekota	Iphunyeziwe. Izintlu zokuthobela zekota zenziwe ngexesha	Ayikho	N/A
	Iphunyeziwe. Izicwangciso zokusebenza zonyaka ezenziwa ngekota zeyoKwindla 2016 zithunyelwe ngexesha	Ukuvelisa iingxelo zekota zesisicwangciso sonyaka sokusebenza	Iphunyeziwe. Iingxelo zesisicwangciso sokusebenza sonyaka ezenziwa ngekota ziveliswe ngexesha	Ayikho	N/A

Izalathisi zokusebenza ezingundoqo, iinjongo ezicetyiweyo kunye nempumelelo ekhoyo

Iziphumo: Iinjongo ezingundoqo	Iintshukumo zokufezekisa iinjongo	Izalathisi zokusebenza ezinokulinganiswa nezizibungqina 2016-2017	Impumelelo ekhoyo 2015- 2016	Iinjongo ecetyiweyo 2016- 2017	Impumelelo ekhoyo 2016- 2017	Ukuphambuka: okucetyiweyo/ okukhoyo 2016- 2017	Inkcazelo yokuphambuka
2.1 Ukunika ulawulo lwezemali kunye nolawulo lwequmrhu olusebenzayo nolufanelekileyo	Ukuqinisekisa ukuba iziko lilandela imikhwa enobulungisa yolawulo kunye nemithetho elawulayo	Ingxelo yophicotho-zincwadi engenasikhwasilima rhoqo ngonyaka	1	1	1	0	
		Akukho manqaku engxelo kwiingxelo zemali nakwiinkcukacha zokusebenza	0	0	0	0	N/A
	Ukuphengulula nokuhlaziya yonke imigaqo-nkqubo neenkqubo zeziko rhoqo ngonyaka	Unxibelelwano lonyaka oludandalazisa iinguqu kuyo yonke imigaqo-nkqubo yeziko ngowoku-1 kuTshazimpuzi	1	1	1	0	N/A
2.2 Ukumiliseka ulawulo kunye neenkqubo zokwenza oku kungasentla	Ukuqinisekisa ukuqinisekiswa kophicotho-zincwadi lwangaphakathi ngokwesicwangciso sophicotho-zincwadi lwangaphakathi	Kuza kwenziwa uphicotho-zincwadi izihlandlo ezi-4 ngonyaka.	5	4	4	0	N/A
	Ukuqinisekisa ukuba kukho ulawulo olunobulungisa kunye nolawulo	Ubuninzi yimiba ekumyinge we-10% engundoqo efuna ukuphandwa emayiphakanyiswe kwingxelo nganye yophicotho-zincwadi lwangaphakathi	0%	10%	0%	10%	Akukho miba engundoqo efuna ukuphandwa exeliweyo
	Kwenziwa uvavanyo lobungozi rhoqo ngonyaka	Kulungiswa ingxelo yovavanyo lobungozi enye (1) yonyaka rhoqo ngowama-30 kuTshazimpuzi	1	1	1	0	N/A
	Ukuphonononga isicwangciso seIT. Uku-phucula amaseko okusebenza e-IT. Ukunika onke amacandelo izixhobo ezaneleyo ze-IT.	Ixesha lokungasebenzi kweekhompyutha eliboniswe kwingxelo yenyanga liganeno komyinge we-10%	0%	10%	0%	10%	Akhangela kubekho zehlo zokungasebenzi kweekhompyutha
2.3 Impahla yexabiso ezinzileyo: Ukwandisa ubuchule bolawulo lwempahla yexabiso ezinzileyo	Ukuqinisekiswa kwempahla yexabiso ezinzileyo kabini ngonyaka. Ukuhlaziya kwerejista yempahla yexabiso ezinzileyo rhoqo ngenyanga nokuphawulwakwempahla yexabiso entsha ngekhawudi	Irejista yempahla yexabiso ezinzileyo egqibeleleyo ngokuthobela uMgaqo-nkqubo weMphahla yexabiso eZinzileyo ngowama-31 kweyoKwindla	1	1	1	0	N/A
2.4 Icandelo lokunikwa kweenkonzo nezini-maxabiso (SCM): Ukunyanzela ukuthotyela kwemigaqo-nkqubo neenkqubo zeSCM	Ukuwamilela onke amanqaku kanondyebo okwenza izinto ngexesha eliqingqiweyo	Ukuqinisekisa uthethwano nabasebenzi ngamanqaku okwenza izinto kwiintsuku ezingama-30 efunyenwe kuNondyebo. Ikho imizuzu yentlanganiso okanye i-imeyili engqina oku	Ukuthobela ngokupheleleyo	Ukuthobela ngokupheleleyo	Ukuthobela ngokupheleleyo	0	N/A
2.5 Uhlahlo-lwabiwo mali kunye nokunik'ingxelo: Ukuphucula ulawulo lwemali kunye nolawulo lwengxowa-mali yePlayhouse Company	Ukuqwalasela uhlahlo-lwabiwo mali nokuchaza umahluko rhoqo ngenyanga nangekota	Umahluko we-5% xa uthelakiswa nohlahlo-lwabiwo mali olukhoyo mawucaciswe rhoqo ngenyanga	12	12	12	0	N/A
	Uhlahlo-lwabiwo mali lonyaka kufuneka luthunyelwe kwiDAC ngowama-31 kweyeThupha, ngowama-30 kweyeNkanga luze olukugqibela luthunyelwe ngowe-15 kweyoMqungu minyaka le	Ulawulo lwenyanga lwee-akhawunti luza kuthunyelwa kubaphathi, kwiFINCO nakumalungu eKomiti yoPhicotho-zincwadi noLawulo ngowe-15 kwinyanga nganye	12	12	12	0	N/A
		Ulawulo lweeakhawunti zekota luza kuthunyelwa kubaphathi-nxaxheba abangundoqo kwiintsuku ezingama-30 iphelele ikota nganye	4	4	4	0	N/A
2.6 Amatyala amabi: ukuvelisa inkqubo eza kunika isikhokelo kwindlela yokulawula amatyala amabi	Ukuqinisekisa inkqubo yolawulo lwamatyala	Ubuncinane ngumyinge wama-90% wokuhlalulwa kwamatyala ngaphandle kwemiba yezomthetho ngowama-31 kweyoKwindla	100%	90%	100%	10%	Onke amatyala ngaphandle kwalawo emiba yezomthetho anokuhlalulwa

Ukumanya ukusebenza nohlahlo-lwabiwo mali

	2016/2017			2015/2016		
	Imali	Ekhoyo	(Ngaphezulu)/ Ngaphantsi	Imali	Ekhoyo	(Ngaphezulu)/ Ngaphantsi
	R'000	R'000	R'000	R'000	R'000	R'000
Ulawulo lwequmrhu nezemali	13 106	10 963	2 143	12 550	11 353	1 197
Imali iyonke	13 106	10 963	2 143	12 550	11 353	1 197

3.1.2. Inkqubo ephantsi kwenye 1.2: Imicimbi yabasebenzi

A. Injongo yenkqubo

Ukunika iziko inkxaso yemicimbi yabasebenzi.

B. Inkcazelo:

B.1 Ubume:

Icandelo lemicimbi yabasebenzi lilawula imicimbi yabasebenzi kunye nokuthotyelwa kwemithetho elawula imicimbi yabasebenzi

B.2 . Amacandelo anoxanduva: Icandelo lemicimbi yabasebenzi

Iinjongo ezinobuchule/ Iziphumo	Iintshukumo zokufezekisa iinjongo ezinobuchule	Iinkcukacha ezisisiseko	Izalathisi zokusebenza ezinokulinganiswa nezinobungqina ngo- 2016/2017	Izalathisi zokusebenza ezinokulinganiswa nezinobungqina ngo- 2017/2018	Izalathisi zokusebenza ezinokulinganiswa nezinobungqina ngo- 2018/2019	Izalathisi zokusebenza ezinokulinganiswa nezinobungqina ngo- 2019/2020	Izalathisi zokusebenza ezinokulinganiswa nezinobungqina ngo- 2020/2021
3. Ukunika iziko inkxaso efanelekileyo nokuhlangabezana neemfuno zeziko zemcimbi yabasebenzi	Ukunika uqeqesho lwezakhono oluqinisekisa abasebenzi abanezakhono ezikumgangatho ophezulu	Isicwangciso soqeqesho simliselwe ngokupheleleyo ngowama-31 kweyoKwindla ngo-2016	Ngumyinge wama-90% wesicwangciso soqeqesho omiliselwa ngowama-31 kweyoKwindla rhoqo ngonyaka	Ngumyinge wama-90% wesicwangciso soqeqesho omiliselwa ngowama-31 kweyoKwindla rhoqo ngonyaka	Ngumyinge wama-90% wesicwangciso soqeqesho omiliselwa ngowama-31 kweyoKwindla rhoqo ngonyaka	Ngumyinge wama-90% wesicwangciso soqeqesho omiliselwa ngowama-31 kweyoKwindla rhoqo ngonyaka	Ngumyinge wama-90% wesicwangciso soqeqesho omiliselwa ngowama-31 kweyoKwindla rhoqo ngonyaka
	Ukuncedisa abaphathi kumiliseko lwenkqubo yolawulo lokusebenza	Uvavanyo lokusebenza lwethutyana nolokugqibela lwenziwe ngexesha ngeyoKwindla ngo-2016	Izivumelwano zokusebenza ziyilwa ngowama-31 kweyoKwindla kuze kwenziwe uvavanyo lokusebenza olwenziwa kabini ngonyaka	Izivumelwano zokusebenza ziyilwa ngowama-31 kweyoKwindla kuze kwenziwe uvavanyo lokusebenza olwenziwa kabini ngonyaka	Izivumelwano zokusebenza ziyilwa ngowama-31 kweyoKwindla kuze kwenziwe uvavanyo lokusebenza olwenziwa kabini ngonyaka	Izivumelwano zokusebenza ziyilwa ngowama-31 kweyoKwindla kuze kwenziwe uvavanyo lokusebenza olwenziwa kabini ngonyaka	Izivumelwano zokusebenza ziyilwa ngowama-31 kweyoKwindla kuze kwenziwe uvavanyo lokusebenza olwenziwa kabini ngonyaka

Iinjongo ezinobuchule, izalathisi zokusebenza, iinjongo ezicetyiweyo kunye nempumelelo ekhoyo

Iinjongo ezinobuchule	Impumelelo ekhoyo 2015-2016	Iinjongo ecetyiweyo 2016-2017	Impumelelo ekhoyo 2016-2017	Ukuphambuka kwinjongo ecetyiweyo ukuya kwimpumelelo ekhoyo ngo-2016-2017	Inkcazelo yokuphambuka
3. Ukunika iziko inkxaso efanelekileyo nokuhlangabezana neemfuno zeziko zemcimbi yabasebenzi	Iphunyeziwe. Isicwangciso soqeqesho simliselwe ngokupheleleyo ekupheleni kweyoKwindla ngo-2016	Ngumyinge wama-90% wesicwangciso soqeqesho omiliselwa ngowama-31 kweyoKwindla rhoqo ngonyaka	Iphunyeziwe. Ngumyinge wama-92% wesicwangciso soqeqesho esimliselwe ekupheleni kweyoKwindla ngo-2017	2%	Bayawulawula abaphathi umahluko okumyinge we-2%
	Iphunyeziwe. Upho-nonongo lesiqingatha sokuqala sonyaka lwenziwe ngeyeDwarha ngo-2015, lo gama olwesiqingatha sesibini lwenziwe ngoTshazimpuzi ngo-2016	Izivumelwano zokusebenza ziyilwa ngowama-31 kweyoKwindla kuze kwenziwe uvavanyo lokusebenza olwenziwa kabini ngonyaka	Iphunyeziwe. Upho-nonongo lesiqingatha sokuqala sonyaka lwenziwe ngeyeDwarha ngo-2016, lo gama olwesiqingatha sesibini lwenziwe ngoTshazimpuzi ngo-2017	Ayikho	N/A

Izalathisi zokusebenza ezingundoqo, iinjongo ezicetyiweyo kunye nempumelelo ekhoyo

Iziphumo: iinjongo ezingundoqo	Iintshukumo zokufezekisa iinjongo	Izalathisi zokusebenza ezinokulinganiswa nezinobungqina ngo- 2016/2017	Impumelelo ekhoyo 2015 - 2016	Injongo ecetyiweyo 2016 - 2017	Impumelelo ekhoyo 2016 - 2017	Ukuphambuka: okucetyiweyo/ okukhoyo 2016 - 2017	Inkcazelo yokuphambuka
3.1 Ukuqinisekisa ukuxhobisa iziko ngokuzingisileyo ngabasebenzi abanezakhono, abanobuchule nabakhutheleyo ukuhlangabezana neemfuno zeziko	Ukumiliseka iinkqubo ezisebenzayo zokuzingisa abasebenzi, ezoqeqesho nophuhliso kunye nezolawulo lokusebenza	Ezi zicwangciso neenkqubo zilandelayo ziyasebenza ngowoku-1 kweyoMqungu minyaka le: inkqubo yokuzingisa abasebenzi, isicwangciso soqeqesho nophuhliso kunye nesicwangciso solawulo lokusebenza	1	1	1	0	N/A
3.2 Ukulawula, ukuqwalasela nokuvavanya ngokufanelekileyo ukutshintsha kwabasebenzi	Ukuphengulula ukutshintsha kwabasebenzi ngonyaka	Ingxelo yokutshintsha kwabasebenzi eyenziwa rhoqo ngonyaka	12	12	12	0	N/A
		Inani lezithuba ezivulekileyo linganeno komyinge we-10%	10.50%	10%	7.50%	2.50%	Bayawulawula abaphathi umahluko okumyinge we-2.5 %
		Ukuphonononga izithuba ezizalisweyo zithelekiswa nezo zibekelwe imali kuze kunikwe ingxelo ngoku kwintlanganiso zanyanga zonke zabaphathi	12	12	12	0	N/A
3.3 Ukuthobela imithetho yomakulinganwe kwingqesho	1. Ukuphengulula isicwangciso somakulinganwe kwingqesho	Ingxelo yenkqubela yomakulinganwe kwingqesho itholekiswa nesicwangciso kwikota nganye	4	4	4	0	N/A
3.4 Uqeqesho nophuhliso	Ukunika uqeqesho lwezakhono oluxhobisa abasebenzi ukuze babalasele emsebenzini wabo	Ukuvelisa isicwangciso soqeqesho/ukusibekela imali rhoqo ngonyaka nokuqinisekisa ukumiliselwa kwaso ekupheleni kweyoKwindla rhoqo ngonyaka	1	1	1	0	N/A
		Umyinge wama-90% wesicwangciso soqeqesho nemali ebekiweyo iphunyezwa ngowama-31 kweyoKwindla rhoqo ngonyaka	100%	90%	92%	2%	Ulawulo olululo lwesicwangciso luqinisekise umiliseko olukuma-92%
	Ukuxhobisa abasebenzi abaqeqeshwayo ngamava omsebenzi	Ukuqeqeshwa ubuncinane abasebenzi abaqeqeshwayo abasibhozo (8) ukuze bafumane amava omsebenzi	Intsha	8	8	0	N/A
	Uphengululo lokusebenza kwabo bonke abasebenzi olwenziwa kabini ngonyaka	Uphengululo lokusebenza kwabasebenzi olwenziwa kabini ngonyaka luqoshelisiwe	2	2	2	0	N/A
3.5 Ukuqinisekisa imeko yokusebenza kwelR ezinzileyo	Ukuqwalasela nokuphengulula imiba exeliweyo yezikhalazo neyoluleko	Ukunika ingxelo yemiba yezikhalazo neyoluleko rhoqo ngekota	4	4	4	0	n/a
	Ukwakha nokugcina unxulumano nabasebenzi beli ziko olunentsebenziswano	Uthethwano neCollective Bargaining Forum ngemivuzo rhoqo ngonyaka	1	1	1	0	N/A

Ukumanya ukusebenza kunye nohlahlo-lwabiwo mali

	2016/2017			2015/2016		
	Imali	Ekhoyo	(Ngaphezulu)/ Ngaphantsi	Imali	Ekhoyo	(Ngaphezulu)/ Ngaphantsi
	R'000	R'000	R'000	R'000	R'000	R'000
Imicimbi yabasebenzi	2 458	3 104	(646)	2 362	2 324	37
Imali iyonke	2 458	3 104	(646)	2 362	2 324	37

3.1.3. Inkqubo ephantsi kwenye 1.3: linkonzo zenkxaso

A. Injongo yenkqubo:

Ukunika iziko inkxaso yamaseko okusebenza, eyenzuzo kunye neyokhuseleko

B. Inkcazelo:

B.1 Ubume:

Icandelo leenkonzo zenkxaso lixhaswa licandelo lokugcina, indawo yokusebenzela eseMayville kunye necandelo lezokhuseleko

B.2 Amacandelo anoxanduva:

linkonzo zenkxaso, indawo yokusebenzela eMayville kunye necandelo lezokhuseleko

linjongo ez-inobuchule/ iziphumo	lintshukumo zokufezekisa iinjongo ez-inobuchule	linkcukacha ezisisiseko	Izalathisi zokusebenza ez-inokulinganiswa nezinobungqina ngo- 2016/2017	Izalathisi zokusebenza ez-inokulinganiswa nezinobungqina ngo- 2017/2018	Izalathisi zokusebenza ez-inokulinganiswa nezinobungqina ngo- 2018/2019	Izalathisi zokusebenza ez-inokulinganiswa nezinobungqina ngo- 2019/2020	Izalathisi zokusebenza ez-inokulinganiswa nezinobungqina ngo- 2020/2021
Ukunika ulawulo lwempahla yexabiso olusebenzayo, olunobuchule nolukhuselekileyo	Ukuqulunqa isicwangciso esinabileyo senkxaso yamaseko okusebenza nesokhuseleko	Isicwangciso senkxaso nokhuseleko besisebenza ngowama-31 kweyoKwindla ngo-2016. Inkqubela yenyanga nganye ixelwa kwiintlanganiso zabaphathi	Isicwangciso esinabileyo senkxaso yamaseko okusebenza nokhuseleko siyasebenza ngowoku-1 kweyoMdumba rhoqo ngonyaka yaye kunikwa nengxelo yanyanga zonke yenkqubela	Isicwangciso esinabileyo senkxaso yamaseko okusebenza nokhuseleko siyasebenza ngowoku-1 kweyoMdumba rhoqo ngonyaka yaye kunikwa nengxelo yanyanga zonke yenkqubela	Isicwangciso esinabileyo senkxaso yamaseko okusebenza nokhuseleko siyasebenza ngowoku-1 kweyoMdumba rhoqo ngonyaka yaye kunikwa nengxelo yanyanga zonke yenkqubela	Isicwangciso esinabileyo senkxaso yamaseko okusebenza nokhuseleko siyasebenza ngowoku-1 kweyoMdumba rhoqo ngonyaka yaye kunikwa nengxelo yanyanga zonke yenkqubela	Isicwangciso esinabileyo senkxaso yamaseko okusebenza nokhuseleko siyasebenza ngowoku-1 kweyoMdumba rhoqo ngonyaka yaye kunikwa nengxelo yanyanga zonke yenkqubela

linjongo ezinobuchule, izalathisi zokusebenza, iinjongo ezicetyiweyo kunye nempumelelo ekhoyo

linjongo ezinobuchule	Impumelelo ekhoyo 2015-2016	Injongo ecetyiweyo 2016-2017	Impumelelo ekhoyo 2016-2017	Ukuphambuka kwinjongo ecetyiweyo ukuya kwimpumelelo ekhoyo 2016-2017	Inkcazelo yokuphambuka
Ukunika ulawulo lwempahla yexabiso olusebenzayo, olunobuchule nolukhuselekileyo	Iphunyeziwe. Isicwangciso senkxaso nokhuseleko besisebenza ngowoku-1 kweyoMdumba. Inkqubela yenyanga nganye ixelwa kwiintlanganiso zabaphathi	Isicwangciso esinabileyo senkxaso yamaseko okusebenza nokhuseleko siyasebenza ngowoku-1 kweyoMdumba rhoqo ngonyaka yaye kunikwa nengxelo yanyanga zonke yenkqubela	Iphunyeziwe. Isicwangciso senkxaso nokhuseleko besisebenza ngowoku-1 kweyoMdumba. Inkqubela yenyanga nganye ixelwa kwiintlanganiso zabaphathi	Ayikho	N/A

Izalathisi zokusebenza ezingundoqo, iinjongo ezicetyiweyo kunye nempumelelo ekhoyo

Iziphumo: iinjongo ezingundoqo	lintshukumo zokufezekisa iinjongo	Izalathisi zokusebenza ezinokulinganiswa nezinobungqina ngo-2016/2017	Impumelelo ekhoyo 2015 - 2016	Injongo ecetyiweyo 2016 - 2017	Impumelelo ekhoyo 2016 - 2017	Ukuphambuka: okucetyiweyo/ okukhoyo 2016 - 2017	Inkcazelo yokuphambuka
4.1 Ukunika inkxaso yamaseko okusebenza esebenzayo, enobuchule nekhuselokileyo	Ukuyila nokumilisela isicwangciso esikhulu esisebenzayo, esinobuchule nesihamba nexesha sokugcina iinqwelo-mafutha, oomatshini kunye nezakhiwo ngowama-31 kweyoMqungu rhoqo ngonyaka	Isicwangciso esikhulu sokugcina esityikityiweyo kunye nemizuzu yeentlanganiso zeenyanga zamacandelo	12	10	10	0	N/A
4.2 Ukuzingela inkxaso-mali yenkcitho eyinkunzi ngokucebisana neNgqonyela	Ukuvelisa nokumilisela isicwangciso sonyaka senkxaso-mali yenkcitho eyinkunzi kwiinzame zokufumana inkxaso-mali yeeprojekthi zenkcitho eyinkunzi	Isicwangciso sonyaka senkxaso-mali yenkcitho eyinkunzi ngowama-31 kweyoMqungu rhoqo ngonyaka	1	1	1	0	N/A
4.3 Ukugcina imeko yokusebenza ikhuselekile kwaye inempilo	Ukuyila nokumilisela isicwangciso sezempilo nokhuseleko esingqinela na nemithetho elawulayo yeZempilo noKhuseleko	Ukuphengulula isicwangciso sezempilo nokhuseleko nokuthumela ingxelo ngowama-31 kweyoKwindla	1	1	1	0	N/A
		Iintlanganiso zekota zezempilo nokhuseleko ezinemizuzu eshicilelweyo	4	4	4	0	N/A
4.4 Ukuqinisekisa ukugcinwa ngokukuko kweenqwelo-mafutha zasePlayhouse	Ukuphonononga, ukuhlaziya nokumilisela isicwangciso sokugcina iinqwelo-mafutha	Isicwangciso sokugcina iinqwelo-mafutha siyasebenza ngowoku-1 kuTshazimpuzi rhoqo ngonyaka kwaye siyamilisela rhoqo	1	1	1	0	N/A

Ukumanya ukusebenza nohlahlo-lwabiwo mali

	2016/2017			2015/2016		
	Imali	Ekhoyo	(Ngaphezulu)/ Ngaphantsi	Imali	Ekhoyo	(Ngaphezulu)/ Ngaphantsi
	R'000	R'000	R'000	R'000	R'000	R'000
linkonzo zenkxaso	26 357	22 515	3 842	23 416	20 327	3 089
Imali iyonke	26 357	22 515	3 842	23 416	20 327	3 089

3.2 Inkqubo 2: Uphuhliso lweshishini

3.2.1 Inkqubo ephantsi kwenye 2.1: linkonzo zobugcisa, ezentengiso nezobuchwepheshe

A. Injongo yenkqubo: Ukuvelisa nokubonisa iimveliso, iikhonsathi kunye nemisitho yezobugcisa eziindidi ngeendidi.

B. Inkcazelo:

B.1. Ubume:

Icandelo lezobugcisa lijongene neenkqubo zolawulo nezobugcisa.

Icandelo lezentengiso lijongene nonxibelelwano neentengiso.

Icandelo lezobuchwepheshe lijongene nobuchwepheshe bemiboniso

B.2. Amacandelo anoxanduva:

Icandelo lezobugcisa, elezentengiso kunye nelezobuchwepheshe

linjongo ezinobuchule/ iziphumo	lintshukumo zokufezekisa iinjongo ezinobuchule	linkcukacha ezisisiseko	Izalathisi zokusebenza ezinokulinganiswa nezi-nobungqina ngo- 2016/2017	Izalathisi zokusebenza ezinokulinganiswa nezi-nobungqina ngo- 2017/2018	Izalathisi zokusebenza ezinokulinganiswa nezi-nobungqina ngo- 2018/2019	Izalathisi zokusebenza ezinokulinganiswa nezi-nobungqina ngo- 2019/2020	Izalathisi zokusebenza ezinokulinganiswa nezi-nobungqina ngo- 2020/2021
Ukuvelisa nokubonisa imiboniso eyahlukahlukeneyo enobugcisa, eyonwabisayo nefundisayo	Ukuvelisa isicwangciso sonyaka sezobugcisa esiquka kokubini iimveliso zobuchule neziphuhlisayo	Isicwangciso sezobugcisa sonyaka ophela ngowama-31 kweyoKwindla ngo-2016 siqukunjelwe ngowama-28 kweyoMdumba ngo-2014	Isicwangciso sonyaka sezobugcisa esigqibeleleyo siyasebenza ngowama-28 kweyoMdumba	Isicwangciso sonyaka sezobugcisa esigqibeleleyo siyasebenza ngowama-28 kweyoMdumba	Isicwangciso sonyaka sezobugcisa esigqibeleleyo siyasebenza ngowama-28 kweyoMdumba	Isicwangciso sonyaka sezobugcisa esigqibeleleyo siyasebenza ngowama-28 kweyoMdumba	Isicwangciso sonyaka sezobugcisa esigqibeleleyo siyasebenza ngowama-28 kweyoMdumba

linjongo ezinobuchule, izalathisi zokusebenza, iinjongo ezicetyiweyo kunye nempumelelelo ekhoyo

linjongo ezinobuchule	Impumelelo ekhoyo 2015-2016	Injongo ecetyiweyo 2016-2017	Impumelelo ekhoyo 2016-2017	Ukuphambuka kwinjongo ecetyiweyo ukuya kwimpumelelo ekhoyo 2016-2017	Inkcazelo yokuphambuka
Ukuvelisa nokubonisa imiboniso eyahlukahlukeneyo enobugcisa, eyonwabisayo nefundisayo.	Iphunyeziwe. Isicwangciso sonyaka sezobugcisa siqukunjelwe ngowama-28 kweyoMdumba	Isicwangciso sonyaka sezobugcisa esigqibeleleyo siyasebenza ngowama-31 kweyoMqungu	Iphunyeziwe. Isicwangciso sonyaka sezobugcisa siqukunjelwe ngowama-31 kweyoMqungu	Ayikho	N/A

Izalathisi zokusebenza ezingundoqo, iinjongo ezicetyiweyo kunye nempumelelo ekhoyo

Iziphumo: iinjongo ezingundoqo	Iintshukumo zokufezekisa iinjongo	Izalathisi zokusebenza ezinokulinganiswa nezinobungqina ngo-2016-2017	Impumelelo ekhoyo 2015-2016	Injongo ecetyiweyo 2016-2017	Impumelelo ekhoyo 2016-2017	Ukuphambuka: okucetyiweyo/ okukhoyo 2016-2017	Inkcazelo yokuphambuka	
1.1 Ukuvelisa nokubonisa imiboniso enobugcisa, eyonwabisayo nefundisayo (kuxhomekeke kwimali ekhoyo)	Ukuvelisa inkqubo yonyaka yezobugcisa (AAP)	I-AAP egqibeleleyo ngowama-31 kweyoMqungu kwaye iza kuquka oku kulandelayo:	1	1	1	0	N/A	
	Ukumiliselisa inkqubo yonyaka yezobugcisa ngowama-31 kweyoKwindla rhoqo ngonyaka	a) Ubugcisa obenziwayo bomthonyama		2	2	2	0	N/A
		b) Amaqonga amatsha		4	3	8	5	Kuboniswe iimveliso ezongezelelekileyo ebezifunwa ngamandla ngababukeli kunye namagcisa
		c) I-SA Women's Arts Festival		14	10	11	1	Kuboniswe iimveliso ezongezelelekileyo ebezifunwa ngamandla ngababukeli kunye namagcisa
		d) Iinkqubo zezikolo		4	2	2	0	N/A
		e) I-Test Driving the Arts		14	11	14	3	Kwenziwe iikhonsathi ezi-3 ebezingacetywanga nezongeziweyo ngethuba leSAWAF nangexesha leziyolo
		f) Ixesha leziyolo		3	2	3	1	Kuboniswe imveliso enye ebingacetywanga ngeyoMnga ukuze kulinganiswe ukwahlukah-lukana kokuboniswa kweenkqubo
		g) Iimveliso zentsebenziswano kunye nemisitho		16	12	28	16	Kuvela amathuba okuncedisaamagcisa/ abavelisi abongezelelekileyo kodwa kungekho nkqubo ithe kratya
		h) I-Community Arts Mentorship Programme		8	1	1	0	N/A
		i) Ukuqeshisa ngezinto ngaphandle kunye nemisitho		60	35	77	42	Iindawo zifunwe kakhulu kunoko bekulindlelekile
j) Iqonga elijikelezayo		40	40	54	14	Kuvela amathuba okubonisa imiboniso eyongezelelekileyo kwizikolo ngezikolo kwiqonga elijikelezayo		
k) I-Sundowners		17	10	17	7	Kuboniswe imiboniso eyongezelelekileyo ngenyanga kaCanzibe ukuqaqambisa iinkqubo ezikhoyo		
1.2 Ukuqinisekisa ubulungisa kwiinkqubo zethu zezobugcisa	I-AAP iza kuqinisekisa ukuba ubuncinane akumyinge wama-80% amaqela ayefudula ebukulwa athi athabathe inxaxheba rhoqo ngonyaka	Inkqubo yophengululo lwamaqela nabalingane kwezobugcisa nabalingane iza kuqinisekisa ukuthabatha inxaxheba kwamaqela ayefudula ebukulwa akumyinge wama-80% ubuncinane rhoqo ngonyaka	91%	80%	93%	13%	Iimveliso ezongezelelweyo ezibonisiweyo zisincede ukunyusa ukufikelela kwethu kumaqela ayefudula ebukulwa	
1.3 Ukumisa kakhulu nokuqinisa iPlayhouse Company njengophawu olubalulekileyo, ukuthengisa iimveliso zangaphakathi kunye nokusungula uthelwano lwenkxaso-mali yeemveliso	Ukuqinisa intsebenziswano namajelo eendaba	Intsebenziswano eqinisekileyo yopapasho namajelo eendaba exabisa > R500 000 ngonyaka	R 35 841 076	R 5 000 000	R 71 698 260	R 66 698 260	Upapasho alunakuqinisekiswa. Ixabiso lodidi oluthile lqiqithe ngaphaya kwelo beliindlelekile	
		Kufunyenwe inkxaso-mali ekwixabiso elingaphaya kwama-R 250 000 ngonyaka	Intsha	R 250 000	R 425 277	R 175 277	I-Playhouse Company ifumene inkxaso evela kwaSABC ngexesha leziyolo	
	Ukuvelisa amaphulo entengiso yeemveliso ezahlukahlukeneyo zasePlayhouse Company.	Isicwangciso sentengiso siyasebenza ngowama-31 kweyoMqungu rhoqo ngonyaka		1	1	1	0	N/A
	Ukuqinisa ubudlelwane nabathathi-nxaxheba abafanelekileyo	Isicwangciso solawulo lwabathathi-nxaxheba siyasebenza ngowama-31 kweyoMqungu rhoqo ngonyaka		1	1	1	0	N/A

Iziphumo: iinjongo ezin-gundoqo	Iintshukumo zokufezekisa iinjongo	Izalathisi zokusebenza ezinokulinganiswa nezinobungqina ngo-2016-2017	Impumelelo ekhoyo 2015-2016	Injongo ecetyiweyo 2016-2017	Impumelelo ekhoyo 2016-2017	Ukuphambuka: okucetyiweyo/ okukhoyo 2016-2017	Inkcazelo yokuphambuka
1.4 Ukuqinisekisa ukuxhotyiswa kwababukeli okukuko ngokumiselwa kwenkqubo yezobugcisa	Ukuzimasa kwababukeli abakuma-250 000 per ubuncinane ngonyaka (ababukeli abahlawulayo nabangahlawuliyo)	Ukuzimasa kwababukeli kunye nengxelo yentengiso yamatikiti kufuneka zibonise ukuzimasa kwababukeli abakuma-250 000 ubuncinane ngonyaka (abahlawulayo nabangahlawuliyo)	New	250 000	251 502	1 502	Ukuboniswa kwemveliso enempumbelelo yexesha leziyolo iSound of Music kunye nenkqubo yezikolo zibe negalelo ekugqitheni injongo ebimisiwe
	Ukuzimasa kwababukeli abahlawulayo abakuma-45 000 ngonyaka ubuncinane	Ukuzimasa kwababukeli kunye nentengiso yamatikiti kufuneka zibonise ababukeli abazimasileyo abahlawulayo abakuma-45 000 ubuncinane ngonyaka	New	45 000	109 181	64 181	Imfuneko yeofisi yokubhukishela izihlalo iye yagqithisa kunaleyo ibilindelekile
1.5 Iinkonzo zobuchwepheshe baseqongeni: ukuqinisekisa ukusebenza ngokukuko kwazo zonke iindawo zokubonisa nezixhobo zethiyetha, isandi, izibane, impahla enxitywa xa kudlalwa kunye nestudiyo sokushicilela	Ukuphengulula nokumiliselela izicwangciso zokugcina zonke iindawo nezixhobo: isandi, izibane, impahla enxitywa xa kudlalwa kunye nestudiyo sokushicilela	Ikho ingxelo yenyanga yokugcina zonke iindawo nezixhobo, isandi, izibane, impahla enxitywa xa kudlalwa kunye nestudiyo sokushicilela	12	12	12	0	N/A
1.6 Ukunika inkonzo yokukhathalela abathengi ekumgangatho ophuzulu kwindawo yolwamkelo iFront of House	Ukwenza uphan-do-nzulu oluqhubekayo lwabathengi	Ukunika ingxelo yophan-do-nzulu lokwaneliseka lonyaka rhoqo ngenyanga	12	12	12	0	N/A

Ukumanya ukusebenza nohlahlo-lwabiwo mali

	2016/2017			2015/2016		
	Imali	Ekhoyo	(Ngaphezulu)/ Ngaphantsi	Imali	Ekhoyo	(Ngaphezulu)/ Ngaphantsi
	R'000	R'000	R'000	R'000	R'000	R'000
1. Iinkonzo zobugcisa nezobuchwepheshe	34 949	32 094	2 855	29 500	26 940	2 561
Imali iyonke	34 949	32 094	2 855	29 500	26 940	2 561

3.3. Inkqubo 3: Ingeniso

A. Injongo yenkqubo:

Ukwenza ingeniso yodidi lwesibini

B. Inkcazelo:

B.1 Ubume:

Icandelo lezemali lijongene nengeniso yotyalo-mali, icandelo lezobugcisa lijongene nengeniso enxulumene neemveliso lize icandelo leenkonzoz zenkxaso lijongane nengeniso yerenti, eyeekhostyom, eyesethi kunye neyempahla yeqonga

B.2 Amacandelo anoxanduva:

Icandelo lezemali, elezobugcisa neleenkonzo zenkxaso

Iinjongo ezinobuchule/ Iziphumo	Iintshukumo zokufezekisa iinjongo ezinobuchule	Iinkcukacha ezisisiseko	Izalathisi zokusebenza ezinokulinganiswa nezinobungqina ngo- 2016/2017	Izalathisi zokusebenza ezinokulinganiswa nezinobungqina ngo- 2017/2018	Izalathisi zokusebenza ezinokulinganiswa nezinobungqina ngo- 2018/2019	Izalathisi zokusebenza ezinokulinganiswa nezinobungqina ngo- 2019/2020	Izalathisi zokusebenza ezinokulinganiswa nezinobungqina ngo- 2020/2021
Ukwandisa imithombo yengeniso yeziko	Ukudibanisa nokumanya izixhobo zenkxaso-mali yamaseko okusebenza neemfuno zeziko zemithombo eyahlukahlukeneyo kuhlahlo-lwabiwo mali lonyaka	Uhlahlo-lwabiwo mali olugqibeleleyo oluquka imithombo yenkxaso-mali luvunywe liBhunga ngowe-15 kweyoMqungu ngo-2016	Uhlahlo-lwabiwo mali olugqibeleleyo oluquka imithombo yenkxaso-mali lwenziwe ngowama-31 kweyoMqungu	Uhlahlo-lwabiwo mali olugqibeleleyo oluquka imithombo yenkxaso-mali lwenziwe ngowama-31 kweyoMqungu	Uhlahlo-lwabiwo mali olugqibeleleyo oluquka imithombo yenkxaso-mali lwenziwe ngowama-31 kweyoMqungu	Uhlahlo-lwabiwo mali olugqibeleleyo oluquka imithombo yenkxaso-mali lwenziwe ngowama-31 kweyoMqungu	Uhlahlo-lwabiwo mali olugqibeleleyo oluquka imithombo yenkxaso-mali lwenziwe ngowama-31 kweyoMqungu

Iinjongo ezinobuchule, izalathisi zokusebenza, iinjongo ezicetyiweyo kunye nempumelelo ekhoyo

Iinjongo ezinobuchule	Impumelelo ekhoyo 2015-2016	Iinjongo ecetyiweyo 2016-2017	Impumelelo ekhoyo 2016-2017	Ukuphambuka kwinjongo ecetyiweyo ukuya kwimpumelelo ekhoyo 2016-2017	Inkcazelo yokuphambuka
Ukwandisa imithombo yengeniso yeziko	Iphunyeziwe. Uhlahlo-lwabiwo mali olugqibeleleyo oluquka imithombo yenkxaso-mali lufakwe kuhlahlo-lwabiwo mali oluvunywe liBhunga ngeyoMqungu	Uhlahlo-lwabiwo mali olugqibeleleyo oluquka imithombo yenkxaso-mali ngowama-31 kweyoMqungu	Iphunyeziwe. Uhlahlo-lwabiwo mali olugqibeleleyo oluquka imithombo yenkxaso-mali lufakwe kuhlahlo-lwabiwo mali oluvunywe liBhunga ngeyoMqungu	Ayikho	N/A

Izalathisi zokusebenza ezingundoqo, iinjongo ezicetyiweyo kunye nempumelelo ekhoyo

Iziphumo: iinjongo ezingundoqo	Iintshukumo zokufezekisa iinjongo	Izalathisi zokusebenza ezinokulinganiswano- 2016-2017	Impumelelo ekhoyo 2015-2016	Iinjongo ecetyiweyo 2016-2017	Impumelelo ekhoyo 2016-2017	Ukuphambuka: okucetyiweyo/okukhoyo 2016-2017	Inkcazelo yokuphambuka
5.1 Ukwandisa imithombo yengeniso yodidi lwesibini	Ukumanya nokumilisele izicwangciso ezinabileyo zokwenza ingeniso yodidi lwesibini	Igosa eliyintloko yezemali liza kumanya izicwangciso zengeniso yodidi lwesibini ukuze ziqukwe kuhlahlo-lwabiwo mali, ezikhoyo ngowama-31 kweyoMqungu	2	2	2	0	N/A
5.2 Utyalo-mali: inzala encumisayo kwimali etyaliweyo ukuqinisekisa ukuthobela uMgaqo-nkqubo woTyalo-mali	Ukutyal'imali kwiibhanka zeli ezinkulu ngenzala engaphezulu kweqondo lenzala elinganeno nge-5% kwiqondo lenzala yemali-mboleko	Ukuqinisekisa utyalo-mali kwiibhanka zeli ezinkulu ngenzala engaphezulu kweqondo lenzala elinganeno nge-5% kwiqondo lenzala yemali-mboleko	Ngumyinge we-100% walo lonke utyalo-mali ophunyeziweyo kwiibhanka ngenani elingaphezulu kweqondo lenzala yemali-mboleko elinganeno nge-5%	Ngumyinge we-100% walo lonke utyalo-mali ophunyeziweyo kwiibhanka ngenani elingaphezulu kweqondo lenzala yemali-mboleko elinganeno nge-5%	Ngumyinge we-100% walo lonke utyalo-mali ophunyeziweyo kwiibhanka ngenani elingaphezulu kweqondo lenzala yemali-mboleko elinganeno nge-5%	0	N/A
5.3 Ingeniso eyenziwe ngokuqeshisa izinto ngaphandle	Ukuvelisa nokumilisele isicwangciso sokuphumeza uhlahlo-lwabiwo mali olufunwayo olusekelwe ukuqeshisa ngeethiyetha ngaphandle	Ukuqeshisa ngeethiyetha ngaphandle kuza kwenza umyinge wama-90% wengeniso emisiweyo rhoqo ngonyaka	420%	90%	245%	155%	Iindawo zemiboniso zifunwe kakhulu kunoko bekulindlekile
5.4 Abaqeshi, iikhostyum, iisethi nezixhobo zeqonga	Ukuqinisekisa ukuba eli phulo lokuqeshisa ngeeofisi, iikhostyum, iisethi kunye nezixhobo zeqonga kuza kuzifezekisa iinjongo zemali ezimisiweyo	Ukuqeshisa ngeeofisi, iikhostyum, iisethi kunye nezixhobo zeqonga kuza kwenza umyinge wama-75% wengeniso emisiweyo rhoqo ngonyaka	97%	75%	99%	24%	Ukufunwa kweeofisi, iikhostyum, iisethi kunye nezixhobo zeqonga kube ngaphaya koko bekulindlekile xa kuthelekiswa neminyaka egqithileyo
5.5 Indawo yokubhukishela izihlalo	Ukuqinisekisa ukuba ingeniso efunyenwe kwintengiso yamatikiti iyahlangabezana neenjongo ezibekelwe imal ezimisiweyo	Intengiso yamatikiti iza kufumana umyinge wama-90% engeniso ebekelwe imali rhoqo ngonyaka	Intsha	90%	294%	204%	Indawo yokubhukishela izihlalo ifunwe ngaphaya koko bekulindlekile
5.6 Ingeniso yenkxaso-mali	Ukuqinisekisa ukuba ingeniso efunyenwe kwinkxaso-mali iyahlangabezana neenjongo ezibekelwe imali ezimisiweyo	Inkxaso-mali iza kufumana umyinge wama-90% wengeniso ebekelwe imali rhoqo ngonyaka	Intsha	90%	100%	10%	Iphunyeziwe. Umyinge we-100% wenkxaso-mali ebekelwe imali

Ukumanya ukusebenza nohlahlo-lwabiwo mali

	2016/2017			2015/2016		
	Imali	Ekhoyo	(Ngaphezulu)/ Ngaphantsi	Imali	Ekhoyo	(Ngaphezulu)/ Ngaphantsi
	R'000	R'000	R'000	R'000	R'000	R'000
Ukumanywa kwengeniso	14 363	20 956	(6 593)	10 676	13 498	(2 822)
Imali iyonke	14 363	20 956	(6 593)	10 676	13 498	(2 822)

4. ISISHWANKATHELO SEENKCUKACHA ZEMALI

4.1. Ukuqokelelwa kwengeniso

Imithombo yengeniso	2016/2017			2015/2016		
	Imali	Ekhoyo	(Ngaphezulu)/ Ngaphantsi	Imali	Ekhoyo	(Ngaphezulu)/ Ngaphantsi
	R'000	R'000	R'000	R'000	R'000	R'000
Izibonelelo –Imisebenzi	52 323	54 602	(2 279)	50 543	52 713	(2 170)
Izibonelelo – Inkunzi	13 818	20 454	(6 636)	6 000	23 015	(17 015)
Ingeniso yezemali	7 003	7 805	(802)	6 016	7 279	(1 263)
Ingeniso yemveliso	2 624	7 710	(5 086)	2 499	3 998	(1 499)
Ukuqeshisa	427	569	(142)	407	413	(6)
Ukuqeshisa ngempahla enxitywayo yokudlala, eyokuhombisa kunye neyeqonga	551	485	67	525	494	31
Imveliso yamaxeshathile	1 258	1 888	(630)	1 229	433	796
Ingeniso yenkxaso	2 499	2 499	0	0	882	(882)
Imali iyonke	80 504	96 012	(15 508)	67 219	89 226	(22 007)

4.2. Inkcitho yenkqubo

Igama lenkqubo	2016/2017			2015/2016		
	Imali	Ekhoyo	(Ngaphezulu)/ Ngaphantsi	Imali	Ekhoyo	(Ngaphezulu)/ Ngaphantsi
	R'000	R'000	R'000	R'000	R'000	R'000
Iinkonzo zobugcisa nobuchwepheshe	34 949	32 094	2 855	29 500	26 940	2 561
Ulawulo lwequmrhu kunye necandelo lezemali	13 106	10 963	2 143	12 55	11 353	1 197
Imicimbi yabasebenzi	2 458	3 104	(646)	2 362	2 324	37
Iinkonzo zenkxaso	26 357	22 515	3 842	23 416	20 327	3 089
Imali iyonke	76 871	68 677	8 194	67 828	60 943	6 884

Iipprojekthi zamaseko okusebenza	2016/2017			2015/2016		
	Imali	Ekhoyo	(Ngaphezulu)/ Ngaphantsi	Imali	Ekhoyo	(Ngaphezulu)/ Ngaphantsi
	R'000	R'000	R'000	R'000	R'000	R'000
Izixhobo ze-ofisi	768	297	471	711	155	556
Izixhobo zekhompyutha	225	1 289	(1 064)	225	158	67
Izakhiwo	26 902	11 048	15 854	16 277	5 220	11 057
Iqonga kunye nezinye izixhobo	26 662	21 028	5 634	33 204	651	32 552
Iinqwelo-mafutha	0	0	0	355	391	(36)
Imali iyonke	54 558	33 662	20 895	50 772	6 574	44 197



▲1976 Musical

1. INTSHAYELELO

Ulawulo lwequmrhu lubandakanya iinkqubo ezikhokela indlela iPlayhouse Company eyalelwa, elawulwa nethatyathiswa ngayo uxanduva. Ukongeza kwizinto zomthetho eziyimfuneko kwimithetho elawula iPlayhouse Company, iPlayhouse Company ilawulwa nguMthetho woLawulo lweMali kaRhulumente (IPFMA) kunye nemithetho-siseko equlethwe yiNgxelo yeKumkani kuLawulo lweQumrhu.

Amaqela anoxanduva lolawulo lwequmrhu yiPalamente, isiGqeba kunye neGunya elinika ingxelo yeli ziko likarhulumente I-Playhouse Company ayibanga nazo iindibano neKomiti eyongamele imicimbi yeSebe lezoBugcisa neNkcubeko.

2. IBHUNGA

2.1. Imisebenzi yeBhunga

Imisebenzi yeBhunga yile:

- Ukuvelisa imigaqo-nkqubo;
- Ukugcina, ukulondoloza nokukhusela yonke impahla engenakuchukunyiswa nenokuchukunyiswa eselugcinweni okanye ebolekwe okanye ekuyeyePlayhouse Company;
- Ukwamkela, ukugcina, ukulondoloza nokukhusela yonke imiboniso kunye nengqokelela yayo yonke impahla enokuchukunyiswa ebekwe elugcinweni naselulawulweni lwalo phantsi kweCandelo le-10 loMthetho wamaZiko eNkcubeko 10(1);
- Ukunyusa ingxowa-mali yePlayhouse Company;
- Ukuphatha nokulawula iimali ezifunyanwa yiPlayhouse Company kwakunye nokusebenzisa ezi mali ukuhlawula iindleko ezinxulumene nokwenza kwalo imisebenzi yalo;
- Ukugcina ingxelo eyiyo yempahla yePlayhouse Company, kunye nokuthumelela uMlawuli Jikelele naziphi na ingxelo azifunayo ngokunxulumene nokugcina iincwadi zokunik'ingxelo ezifanelekileyo;
- Ukumisa nokufaka endaweni yoMthetho wamaZiko eNkcubeko injongo yeziko elibhengeziweyo, ngemvume yoMphathiswa; kunye
- Nokufezekisa iinjongo zeziko elibhengeziweyo gabalala

IBhunga linako ukumisela iiyure kunye nemiqathango elunokuthi uluntu luyityelele phantsi kwayo iPlayhouse Company.

IBhunga linamandla okuqesha abantu elibabona bekufanele ukwenza imisebenzi yePlayhouse Company. Ukuqingqwa kwemivuzo kunye nemigqaliselo nemiqathango yenkonzo kuya kwenziwa ngokungqinelana nangolungiselelo oluvunyiwe nguMphathiswa ecebisana noMphathiswa weZemali.

Ukwakhiwa kweBhodi

Igama	Umhla wokuqeshwa	Umhla wokushiya	Izidanga	Ezinye iiKomiti (umz: iKomiti yoPhicotho-zincwadi)	Inani leentlanganiso ezizinyasiweyo	Umvuzo (R)
Nkszn Hlengiwe Christophina Mgabadelu <i>USihlalo weBhunga</i>	1-12-2014	BA Social Work, Honours in Sociology	Inkonzo kaRhulumente noLawulo		19	45 325
Mnu Sathie Gounden	1-12-2014	CA (SA)	Ezemali, ulawulo lobungozi, Ulawulo lwequmrhu nophicotho-zincwadi	Ikomiti yoPhicotho-zincwadi kunye noLawulo	13	8 084
Nkszn Fikile Eunice Khumalo	1-12-2014	Labour Relations, Social Security	Ezemisebenzi, urhwebo noshishino, uphuhliso lwentlalo-ntle	Ikomiti yezoBugcisa kunye noNyuso lwengxowa-mali/ Ikomiti yeMicimbi yaBasebenzi	12	13 840
Nkszn Khwezi BL Kunene	1-12-2014	BSC Property Development	Uthelekelelo lobuninzi, Ulawulo lweekontraktha	Ikomiti yeZemali kunye nokufumana izinto/ Ikomiti yeMicimbi yaBasebenzi	9	0
Mnu Nathi Mbele	1-12-2014		Uphuhliso loqoqosho nolwentlalo-ntle, ingcali yecandelo lempahla elukiweyo nobuxhakaxhaka beekhompyutha nonxibeelwano	Ikomiti yezoBugcisa kunye noNyuso lwengxowa-mali/ Ikomiti yeZemali kunye nokufumana izinto	14	11 512
Nkszn Siphesihle Ndlela	1-12-2014	BA Communications (UNISA) Hotel Management (ND) Durban Hotel School	Unxibelelwano nabaxumi kunye namajelo eendaba, kwakunye neentengiso	Ikomiti yezoBugcisa kunye noNyuso lwengxowa-mali/ Ikomiti yeZemali kunye nokufumana izinto	16	18 400
Nkszn Linda Zama	1-04-2016	BA, LLB degrees	Ezomthetho, ulawulo kunye nokuphatha	Ikomiti yoPhicotho-zincwadi kunye noLawulo	10	0
Mnu Clive Mlungisi Mancu	1-10-2016	Senior Executive Program-Africa, Post Graduate Diploma-Business Management, Mergers and Acquisitions, Corporate Restructuring, Mergers and Acquisitions, Finance for Non-Financial Managers	Usoomashishini	Ikomiti yeZemali kunye nokufumana izinto/ Ikomiti yezoBugcisa kunye noNyuso lwengxowa-mali	3	0
Mnu Sadhasivan Naidoo	1-10-2016	B.A; B.Admin; B.Admin (Honours) Industrial Psychology	Ezokhenketho, ezoshishino kunye nophuhliso lwemicimbi yabasebenzi	Ikomiti yeMicimbi yaBasebenzi/ Ikomiti yezoBugcisa kunye noNyuso lwengxowa-mali	4	4 656

eKomiti

Amalungu	Ikomiti yeZemali kunye nokufumana izinto	Ikomiti yoPhicotho-zincwadi kunye noLawulo	Ikomiti yeMicimbi yaBasebenzi	Ikomiti yezoBugcisa kunye noNyuso lwengxowa-mali
Nkszn Hlengiwe Mgabadelu				
Mnu Sathie Gounden		✓		
Nkszn Fikile Khumalo			✓	✓
Nkszn Khwezi Kunene	✓		✓	
Mnu Nathi Mbele				✓
Nkszn Siphesihle Ndlela	✓			✓
Nkszn Linda Zama		✓		
Mnu Mlu Mancu	✓			✓
Mnu Sadha Naidoo			✓	✓

3. ULAWULO LOBUNGOZI

IPlayhouse Company inomgaqo-nkqubo wolawulo lobungozi okhokela inkqubo yokwalatha nokulawula ubungozi. Lo mgaqo-nkqubo uphononongwa rhoqo ngonyaka. Ulawulo lobungozi yinkqubo apho iGosa elinika ingxelo ePlayhouse, iGosa eliyintloko yezemali kunye nabanye abaphathi abayintloko bathi balathe baze bachaze ubungozi obukhoyo nobuvela rhoqo kushishino, kwezemali nasemsebenzini baze kananjalo baqulunqe iindlela ezifanelekileyo nezingangeni nzulu epokothweni zokukhawulelana nobu bungozi, bekwenza oku rhoqo ngenjongo nangenkuthalo.

Ulawulo lobungozi olusebenzayo lubalulekile kakhulu ePlayhouse Company khon' ukuze eli ziko lizalisekise igunya lalo lokunika iinkonzo ezilindelekileyo eluntwini kunye nokusebenza kwalo okulindelwe liSebe lezoBugcisa neNkcubeko.

Irejista yobungozi iphononongwa rhoqo ngonyaka emva kwendibano yabaphathi nawo onke amaqela olawulo anxulumene nokwalathwa kobungozi. Irejista yobungozi isetyenziselwa ukuhlala indlela yesicwangciso seminyaka emithathu sophicotho-zincwadi lwangaphakathi esiphononongwa size sivunywe yiKomiti yoPhicotho-zincwadi noLawulo kunye neBhunga.

Inkqubela-phambili yeenguqu zolawulo lobungozi obalathweyo iqwalaselwa kwiindibano zabaphathi zenyanga.

4. ICANDELO LOLAWULO LWANGAPHAKATHI

Ulawulo lwangaphakathi luxanduva lomphathi ngamnye. Sinemigaqo-nkqubo neenkqubo esizisebenzisayo ukumisela ulawulo lwangaphakathi yaye imigaqo-nkqubo iphononongwa rhoqo ngonyaka ukuqinisekisa ukuba ihambisana nemithetho nemimiselo ekhoyo nelawulayo. Abaphathi basebenzisa iziphumo zolawulo lwangaphakathi ezivela kubaphicothi-zincwadi ukuphucula ulawulo lwangaphakathi.

5. UPHICOTHO-ZINCWADI LWANGAPHAKATHI

IPlayhouse Company inoMqulu woPhicotho-zincwadi lwaNgaphakathi ophononongwa rhoqo ngonyaka. Lo Mqulu woPhicotho-zincwadi lwaNgaphakathi waveliswa ukuze uchaze iwonga leziko, iinjongo, igunya noxanduva lwecandelo lophicotho-zincwadi lwangaphakathi olufunyanwa ngaphandle. Uphicotho-zincwadi lwangaphakathi luqhutywa ngamagatya eCandelo le-3.2 leMimiselo kaNondyebo kunye neCandelo lama-38(1)(a)(i) nelama-76(4)(e) lePFMA kwaye ludlala indima ebalulekileyo ukuqinisa ulawulo lwePlayhouse Company.

Injongo engundoqo yophicotho-zincwadi lwangaphakathi ePlayhouse Company kukunika ingqiniseko ezimeleyo kunye neengcebiso ngeenkqubo zolawulo lwangaphakathi, iinkqubo zolawulo lobungozi kunye nezolawulo, kwakunye nemisebenzi nokusebenza kwePlayhouse Company ngokunxulumene nemithetho, imimiselo kunye nemigaqo-nkqubo elawulayo.

Nasi isishwankathelo seemfanelo eziqunyelwe kulo nyaka-mali ngokuhambisana nesicwangciso esivunyiweyo seziganeko zophicotho-zincwadi lwangaphakathi:

1. Inkqubo yokuvala ingxelo yemali
2. Uphengululo lolawulo lwempahla yexabiso
3. Uphengululo olulandelelayo lwemiba ebiphakanyiswe ngenx'engaphambili
4. Ulawulo lwemicimbi yabasebenzi
5. Uphengululo lwenkqubo yolawulo lokusebenza
6. Uphengululo lolawulo lwecandelo lokunik'iinkonzo neziniki-maxabiso (inkqubo yothelekelelo lwamaxabiso)

6. IKOMITI YOPHICOTHU-ZINCWADI KUNYE NOLAWULO

IPlayhouse Company inoMqulu weKomiti yoPhicotho-zincwadi noLawulo ophengululwa rhoqo ngonyaka.

Injongo engundoqo yeKomiti yoPhicotho-zincwadi noLawulo kukuncedisa iBhunga ekwenzeni imisebenzi yalo enxulumene nokukhusela impahla yexabiso, ukusebenzisa iinkqubo ezifanelekileyo, inkqubo yolawulo kunye nokulungisa iingxelo zemali ezichanekileyo ngokuthobela zonke iimfumo zemithetho elawulayo kunye nemigangatho yokunika ingxelo.

Ikomiti yoPhicotho-zincwadi noLawulo yenza le misebenzi ilandelayo:

1. Ukongamela, ukulungelelanisa kunye nokuthelekelela ixabiso loPhicotho-zincwadi olwenziwa ngabaphicothi-zincwadi bangaphandle nabangaphakathi kweli ziko;
2. Ukugcina unxibelelwano oluvulelekileyo kwiBhunga ngokubamba iintlanganiso rhoqo, ukuqinisekisa ukuba abaphicothi-zincwadi bangaphakathi nabangaphandle babelana ngezimvo nolwazi lwabo kwiziko kwanokuqinisekisa igunya noxanduva abanalo;
3. Ukusebenza njengeqela elizimeleyo nelingathabathi cala ukuze liphonononge iinkcukacha zemali elizinikwa ngabaphathi beziko;
4. Ukuphengulula ukufaneleka kolawulo olukhoyo lweengxelo nolokunika iingxelo; kunye
5. Nokuvula indlela yonxibelelwano phakathi kwabaphicothi-zincwadi bangaphakathi nabangaphandle kunye neBhunga.

7. UKUTHOBELA IMITHETHO KUNYE NEMIMISELO

NgokweCandelo lesi-4 loMthetho wamaZiko eNkcubeko, iPlayhouse Company iliqumrhu kwaye iPlayhouse Company, iBhunga kunye nawo onke amalungu alo kufuneka bathobele imithetho-siseko yolawulo lwequmrhu olunobulungisa kunye nayo yonke imithetho nemimisele elawulayo.

Abaphathi bePlayhouse Company banika ingxelo ngokuthotyelwa kwemithetho nemimisele rhoqo ngekota. Kuqulunqwa uluhlu olulandelwayo lwePFMA kwaye nakuphi na ukungathotyelwa kwalo kuxelwa kwiBhunga nakwiikomiti eziphantsi kwalo.

8. UBUQHOPHOLLO NORHWAPHILIZO

IPlayhouse Company inesicwangciso sokuthintela ubuqhophololo esiphengululwa rhoqo ngonyaka.

Esi sicwangciso sithabathela ingqalelo amaphulo asisiseko okuthintela ubuqhophololo ePlayhouse Company.

Iinjongo ezingundoqo zesi sicwangciso zezi zilandelayo:

1. Ukunika izikhokelo zokuthintela, ukubona nokuxela izenzo zobuqhophololo;
2. Ukudala umkhwa okhuthaza bonke abasebenzi kunye nabathathi nxaxheba ukuba bathi gqolo ukwenza izinto ngokusesikweni xa basebenza egameni lePlayhouse Company;
3. Ukukhuthaza bonke abasebenzi nabathathi nxaxheba ukuba basebenzele ukulithintela nokulibona ifuthe elikhoyo okanye elinokwenziwa bubuqhophololo ePlayhouse Company;
4. Ukukhuthaza bonke abasebenzi kunye nabathathi nxaxheba ukuba baxele xa bekrokrela izenzo zobuqhophololo bengenaloyiko lokutshutshiswa okanye ukumangalelwa;
5. Kunye nokunika ugqaliso lokwaba ukunikwa kwengxelo kunye negunya.

9. UKUNCIPHISA IMBAMBANO YEMIDLA

Abaphathi nabasebenzi becandelo lezemali bazalisa ifomu yokubhengeza imidla yabo rhoqo ngonyaka. Abaphathi nabasebenzi bayakhuthazwa ukuba bayihlaziye le fomu rhoqo xa kukho iinguqu ezivelayo kwiimeko zabo.

IPlayhouse Company inoMgaqo-nkqubo weMikhwa esesikweni nokhokela abasebenzi kwiimeko apho kunokubakho khona imbambano yemidla.

10. UMGAQO-NKQUBO WOKUZIPHATHA

I-Playhouse Company inoMgaqo-nkqubo weMikhwa esesikweni kunye noMgaqo-nkqubo woKuziphatha ekuyiyo ekhokela abasebenzi kwindlela amabaziphathe ngayo emsebenzini.

UMgaqo-nkqubo woKuziphatha uxhonywe kuzo zonke iibhodi zezaziso ezikhoyo ePlayhouse Company. Ukuze abasebenzi bakwazi ukwenza isigqibo ngentshukumo emayithatyathwe nokumisela izinto eziyimikhwa esesikweni kufuneka banike ingqalelo baze bakhokelwe zezi zinto zilandelayo:

- Imigaqo-nkqubo yeziko;
- Imithetho yelizwe;
- Indlela yokuziphatha kunye nemikhwa eyamkelekileyo jikelele;
- Kunye nezimilo neenqobo zabo ezisemgangathweni.

Xa kukho nasiphi na isenzo esiphambukayo kwezi zinto zibalulwe apha ngasentla eso senzo siya kuthi sithatyathwe njengokuziphatha gwenxa.

Xa umsebenzi ethe wophula uMgaqo-nkqubo weMikhwa esesikweni okanye uMgaqo-nkqubo woKuziphatha kuya kuthi kulandelwe inkqubo eqhelekileyo yezikhalazo neyoluleko yecandelo lemicimbi yabasebenzi.

11. IMIBA YEZEMPILO, EZOKHUSELEKO KUNYE NEYOKUSINGQONGILEYO

Rhoqo ngonyaka iPlayhouse Company yenza uvavanyo lokuthotyelwa kwemimiselo yezempilo nokhuseleko. Isiphumo solu vavanyo siso esazisa iPlayhouse Company ngeendawo ezifuna ukuphuculwa nokumiliselwa.

Ukuthobela imimiselo yezempilo neyokhuseleko sesinye sezalathisi eziphambili zokusebenza ezikwisiwangciso sokusebenza sonyaka sikaManejala weNkonzo zeNkxaso.

I-Playhouse Company iyithobela ngokupheleleyo yonke imimiselo yezempilo nokhuseleko.

12. UXANDUVA LWASEKUHLALANI

Injongo yePlayhouse Company kukuphucula, ukukhuthaza nokulondoloza ubugcisa obenziwayo ngokuthi yenze ize ibonise imiboniso eyonwabisayo nefundisayo, kwaye iboniswe kwiindidi ngeendidi zababukeli.

IPlayhouse Company iyithabatha le njongo yayo njengoxanduva enalo eluntwini nasekuhlaleni.

Inkqubo yezobugcisa ePlayhouse Company ikulungele ukwenza umsebenzi wayo woxanduva lwasekuhlaleni.

Phakathi kweenkqubo ezilungiselelwe uxanduva lwasekuhlaleni, kusetyenziswa iqonga elijikelezayo ukuhambisa iinkqubo zokufikelela eluntwini kwiindawo ezisemaphandleni apho abantu bengakwazi ukufikelela kwithiyetha ukuze babone imidlalo yeqonga. Abanye kwaba bantu bayibona okokuqala ngqa ezimbalini imiboniso edlalwa ngqo kwaye loo nto ibavuyisa kakhulu.

Iqonga elijikelezayo likwasetyenziswa ukubonisa imiboniso yemisebenzi yezikolo kwiindawo ezisemaphandleni. Ngabantwana abangaphaya kwama-74 000 abafumene ithuba lokubona umboniso ngqo wemisebenzi yesikolo eqongeni. Mhlawumbi aba bantwana babengasoze balifumane eli thuba lokubukela umboniso weqonga.

13. INGXELO YEKOMITI YOPHICOTH-ZINCWADI

IKomiti yoPhicotho-zincwadi noLawulo (iKomiti) ithi thaca ingxelo yayo yonyaka-mali ophela ngomhla wama-31 kweyoKwindla ngo-2017.

Amalungu eKomiti yoPhicotho-zincwadi noLawulo kunye nokuzimasa kwawo iintlanganiso

Le Komiti inamalungu amahlanu nadweliswe apha ngezantsi kwaye kufuneka idibane ubuncinane izihlandlo ezine ngonyaka ngokumisela kwemiqathango yayo evunyiweyo. Ziintlanganiso ezine ezibanjwe yile komiti kulo nyaka..

Amalungu eKomiti

Igama	Izidanga	Ngaphakathi/ngaphandle	Umhla wokuqeshwa
UJaji Leona Valerie Theron	Master of Law, Bachelor of Laws and Bachelor of Arts	Ngaphandle – uSihlalo weKomiti yoPhicotho-zincwadi noLawulo	10 kuTshazimpuzi ngo-2015
Nkszn C Jugnarayan	CA (SA), RA	Ngaphandle	10 kuTshazimpuzi ngo-2015
Nkszn Noluthando “Thando” Lungile Radebe	CA (SA), RA	Ngaphandle	24 kweyeKhala ngo-2015
Mnu Sathie Gounden	CA (SA), RA	Ngaphakathi	1 kweyoMnga ngo-2014
Ms Linda Zama	BA, LLB degree	Ngaphakathi	1 kuTshazimpuzi ngo-2016

Uxanduva lweKomiti yoPhicotho-zincwadi noLawulo

Le Komiti inika ingxelo yokokuba ilwenzile uxanduva lwayo olumiselwe kwiCandelo lama-38 (1)(a) loMthetho woLawulo lweMali kaRhulumente woku-1 ka-1999 kunye noMmiselo kaNondyebo we-3.1. Kwakhona, le Komiti inika ingxelo yokokuba yamkele imiqathango esesikweni efanelekileyo njengomqulu wayo woPhicotho-zincwadi noLawulo, imicimbi yayo iyiphathe ngokuhambisana nalo mqulu kwaye ilufezekisile uxanduva lwayo oluqulethwe ngulo mqulu. Lo mqulu uphengululwa rhoqo ngonyaka uze wamkelwe yiKomiti usakuba uvunywe liGunya elinika ingxelo.

Uphicotho-zincwadi lwangaphakathi

IKomiti ilungelelanisa ize yongamele imisebenzi yophicotho-zincwadi lwangaphakathi. Ukwenza oku kunceda iKomiti ikwazi ukunika ingxelo ngokusebenza ngokukuko kophicotho-zincwadi lwangaphakathi. Uphicotho-zincwadi lwangaphakathi luthatyathwe ngaphandle kwaye belusebenza kulo nyaka-mali uphononongwayo.

IKomiti ithe yacamngca irejista yobungozi ehlaziyiweyo ngokwenkqubo-sikhokelo yolawulo lobungozi kunye nemigaqo-nkqubo eyamkelwe liGunya elinika ingxelo. IKomiti isiphonononge yaze yasivuma isicwangciso sophicotho-zincwadi lwangaphakathi sobungozi seminyaka emithathu.

IKomiti yanelisekile kukusebenza ngokukuko kophicotho-zincwadi lwangaphakathi.

Ukusebenza ngokukuko kolawulo lwangaphakathi

IKomiti ivavanye ukusebenza ngokukuko kolawulo lwangaphakathi yaza yaphonononga inkqubo yovavanyo lobungozi ngokwenza oku kulandelayo:

- Izimase indibano yokuncazelana ngolwazi yovavanyo lobungozi nabo bonke abathathi-nxaxheba abaphambili;
- Ithabathe ukusebenza ngokukuko kweenkqubo zeziko zolawulo lobungozi njengento eqhubekayo eyenziwa ngabaphathi;
- Iqwalasele inkqubo yokulandelela zonke izinto ezifuna ukuphandwa ezifunyenwe ngabaphicothi-zincwadi ukuqinisekisa ukuba ziyalungiswa ngokupheleleyo;
- Ifune isiqinisekiso kubaphathi sokokuba ikho into eyenziwayo kwimiba enxulumene naleyo ikhankanywe ngabaphicothi-zincwadi; kwaye
- Inike abaphathi neGunya elinika ingxelo umkhomba-ndlela neengcebiso zokuqinisa iinkqubo zokulawula ubungozi kunye neenkukacha zokusebenza xa kuphononongwa iingxelo zekota.

IKomiti iphonononge iingxelo zophicotho-zincwadi lwangaphakathi, yafumanisa apho iziko libuthathaka khona yaza yaqwalasela ukufaneleka kweempendulo zabaphathi zokuqinisekisa ukuba siyathotywa isantya sokuvela kobungozi kwanokuba imeko yolawulo iyaqhubeka nokuphucuka.

IKomiti yanelisekile yinto yokokuba iPlayhouse Company ithe gqolo ukugcina umgangatho ofanelekileyo wolawulo lwangaphakathi.

IKomiti iyangqinelana nabaphicothi-zincwadi ngokuthi ulawulo lwangaphakathi lusebenza ngokufanelekileyo kwaye luthembekile yaye imiba exelwe ngabaphicothi-zincwadi bangaphakathi kulo nyaka ayibonisanga kusilela kuphathekayo.

Ulawulo lweengxelo zenyanga/zekota ezithunyelwa ngokuyalela kwePFMA kunye noMthetho woKwahlulwa kweNgeniso lube lolwanelisayo ngokweziphumo zengqwalasela nezophicotho-zincwadi lwangaphakathi.

Ingxelo yonyaka yabaphathi kunye nengxelo zenyanga/ yekota

IPlayhouse Company izithumele ngexesha iingxelo zenyanga kwiFINCO nakwiKomiti yoPhicotho-zincwadi noLawulo kwaye ithumele iingxelo zekota kwiSebe lezoBugcisa neNkcubeko ngokuyalela kwePFMA.

Uvavanyo lwengxelo zemali

IKomiti:

- Iphonononge iingxelo zekota kuquka iingxelo zemali ukuqinisekisa ukungqinelana nokuchaneka kweenkcukacha;
- Ijonge ukufaneleka, ukwamkelwa nokusetyenziswa ngokungqinelanayo kwengxelo yemikhwa eyamkeleke jikelele yokunika ingxelo yaseMzantsi Afrika eyamkelwa liGunya elinika ingxelo;
- Ihlole umgangatho nokufakwa ngexesha kweenkcukacha zemali enazo iKomiti ukuze ikwazi ukongamela apha ekuhambeni konyaka;
- Iphonononge iingxelo zemali zePlayhouse Company zonyaka ophela ngomhla wama-31 kweyoKwindla ngo-2016 kwaye yanelisekile yinto yokokuba ayathotywa amagatya oMthetho woLawulo lweMali kaRhulumente kunye nengxelo yemikhwa eyamkeleke jikelele yokunika ingxelo yaseMzantsi Afrika;
- Iphonononge ingxelo yabaphathi yoMphicothi-zincwadi Jikelele kunye nempendulo yabaphathi; kwaye
- Iphonononge ingxelo yoMphicothi-zincwadi Jikelele yaza yaphawula okokuba iingxelo zemali neenkcukacha zokusebenza azibanga nayo imiba efuna ukuphandwa.

Ingxelo yoMphicothi-zincwadi

IKomiti inemincili ukunika ingxelo yokokuba iCompany ifumene ingxelo yomphicothi-zincwadi ecocekileyo nengenasikhwasilima.

IKomiti iyangqinelana kwaye iyakwamkela ukuqukumbela koMphicothi-zincwadi kwiingxelo zemali zonyaka kungoko iKomiti inoluvo lokokuba iingxelo zemali zonyaka eziphicothiweyo mazamkelwe kwaye zifundwe kunye nengxelo yoMphicothi-zincwadi Jikelele.

IKomiti ithabatha eli thuba ukuvuyisana neBhunga kunye nabaphathi beziko ngemigudu yabo nokusebenza kwabo ngokuzinikela ukuze bafumane ingxelo yoMphicothi-zincwadi Jikelele ecocekileyo nengenasikhwasilima iminyaka emihlanu ilandelelana, kwaye ithanda ukuvakalisa ilizwi lombulelo ngenkxaso yabo kunye neengxoxo ezineziqhamo ezihle neKomiti.



UJaji Leona Theron

uSihlalo weKomiti yoPhicotho-zincwadi noLawulo





▲ Sishaye Ingoma

Indima D

ULAWULO LWEMICIMBI YABASEBENZI

1. IINKCUKACHA-MANANI ZOBONGAMELI BEMICIMBI YABASEBENZI

lindleko zabasebenzi kwinkqubo nganye

Inkqubo	Inkcitho yeziko iyonke (R'000)	Inkcitho yabasebenzi (R'000)	Inkcitho yabasebenzi eyiphesenti yenkcitho iyonke (R'000)	Inani labasebenzi	lavareji yeendleko zabasebenzi zomsebenzi ngamnye (R'000)
	91 140	33 274	37%	86	386 902

lindleko zabasebenzi ngokwamabakala emivuzo

Isikhundla	Inkcitho yabasebenzi (R'000)	lindleko zabasebenzi eziyiphesenti yenkcitho iyonke (R'000)	Inani labasebenzi	lavareji yeendleko zabasebenzi zomsebenzi ngamnye (R'000)
Abaphathi abaphezulu	1905	7%	1	1905
Abaphathi abayintloko	1306	5%	1	1306
Abasebenzi abanobuchule nabaqeqeshiweyo	6044	21%	10	604
Abasebenzi abanobuchule	10442	36%	33	316
Abasebenzi abanobuchule obungagqibelelanga	9239	32%	41	225
Abasebenzi abangenabuchule	0	0%	0	0
ABASEBENZI BEBONKE	28936	100%	86	336

lindleko zoqeqesho

Icandelo/ Icandelo lomsebenzi	Inkcitho yabasebenzi (R'000)	lindleko zoqeqesho (R'000)	lindleko zoqeqesho eziyiphesenti yeendleko zabasebenzi	Inani labasebenzi abaqeqeshiweyo	lavareji yeendleko zoqeqesho zomsebenzi ngamnye
	33 274	312	1%	81	3.9

Ingqesho nezithuba ezivulekileyo

Inkqubo	2015/2016 Inani labasebenzi	2016/2017 Izithuba eziphunyeziweyo	2016/2017 Inani labasebenzi	2016/2017 Izithuba ezivulekileyo	Inani eliyiphesenti lezithuba ezivulekileyo
	85	97	86	11	11.34%

Inkqubo	2015/2016 Inani labasebenzi	2016/2017 Izithuba eziphunyeziweyo	2016/2017 Inani labasebenzi	2016/2017 Izithuba ezivulekileyo	Inani eliyiphesenti lezithuba ezivulekileyo
Abaphathi abaphezulu	1	1	1	0	0
Abaphathi abayintloko	1	1	1	0	0
Abasebenzi abanobuchule nabaqeqeshiweyo	8	12	10	2	16.66%
Abasebenzi abanobuchule	34	37	33	4	10.8%
Abasebenzi abanobuchule obungagqibelelanga	41	46	41	5	10.86%
Abasebenzi abangenabuchule	0	0	0	0	0
ABASEBENZI BEBONKE	85	97	86	11	11.34%

linguqu kwingqesho

Salary Band	Ingqesho ekuqaleni kwexesha	Abaqeshiweyo	Abaphelelweyo	Ingqesho ekupheleni kwexesha
Abaphathi abaphezulu	1	0	0	1
Abaphathi abayintloko	1	0	0	1
Abasebenzi abanobuchule nabaqeqeshiweyo	8	2	0	10
Abasebenzi abanobuchule	34	2	3	33
Abasebenzi abanobuchule obungagqibelelanga	41	3	3	41
Abasebenzi abangenabuchule	0	0	0	0
Abasebenzi bebonke	85	7	6	86

Izizathu zokushiya kwabasebenzi

Isizathu	Inani	Iphesenti yenani labasebenzi abashiyayo bebonke
Ukufa	0	0
Ukushiya esikhundleni	2	33.3%
Ukugxothwa	1	16.6%
Umlhala-phantsi	2	33.3%
Impilo enkenenkene	1	16.6%
Ukuphela kwesivumelwano	0	0
Ezinye	0	0
Izizathu zizonke	6	100%

Unxulumano lwabasebenzi: Ukuziphatha gwenxa kunye nenkqubo yoluleko

Uhlobo loluleko	Inani
Isilumkiso esenziwa ngomlomo	0
Isilumkiso esibhaliweyo	0
Isilumkiso sokugqibela esibhaliweyo	1
Ukugxothwa	1

Okujoliswe kuko kumakulinganwe kunye nobume bobulungisa kwingqesho

Izikhundla	AMADODA							
	Antsundu		Amakhaladi		Amandiya		Amhlophe	
	Akhoyo	Inani elifunwayo	Akhoyo	Inani elifunwayo	Akhoyo	Inani elifunwayo	Akhoyo	Inani elifunwayo
Abaphathi abaphezulu	0	0	0	0	0	0	0	0
Abaphathi abayintloko	0	0	0	0	1	1	0	0
Abasebenzi abanobuchule nabaqeqeshiweyo	3	3	0	1	2	1	1	1
Abasebenzi abanobuchule	19	20	1	1	2	2	2	3
Abasebenzi abanobuchule obungagqibelelanga	21	22	0	0	4	4	1	1
Abasebenzi abangenabuchule	0	0	0	0	0	0	0	0
ABASEBENZI BEBONKE	43	45	1	2	9	8	4	5

Izikhundla	AMABHINQA							
	Antsundu		Amakhaladi		Amandiya		Amhlophe	
	Akhoyo	Inani elifunwayo	Akhoyo	Inani elifunwayo	Akhoyo	Inani elifunwayo	Akhoyo	Inani elifunwayo
Abaphathi abaphezulu	1	1	0	0	0	0	0	0
Abaphathi abayintloko	0	0	0	0	0	0	0	0
Abasebenzi abanobuchule nabaqeqeshiweyo	2	2	0	0	1	1	1	1
Abasebenzi abanobuchule	6	9	1	1	0	0	2	1
Abasebenzi abanobuchule obungagqibelelanga	10	10	2	1	3	4	0	2
Abasebenzi abangenabuchule	0	0	0	0	0	0	0	0
ABASEBENZI BEBONKE	19	22	3	2	4	5	3	4

Izikhundla	ABASEBENZI ABANEZIPHENE EMZIMBENI			
	Amadoda		Amabhinqa	
	Akhoyo	Inani elifunwayo	Akhoyo	Inani elifunwayo
Abaphathi abaphezulu	0	0	0	} 2
Abaphathi abayintloko	0	0	0	
Abasebenzi abanobuchule nabaqeqeshiweyo	0	0	1	
Abasebenzi abanobuchule	0	0	0	
Abasebenzi abanobuchule obungagqibelelanga	0	0	0	
Abasebenzi abangenabuchule	0	0	0	
ABASEBENZI BEBONKE	0	0	0	



▲ Ten Days in a Shebeen

Indima E

INKCUKACHA ZEMALI

1. INGXELO YOKUTHABATH'UXANDUVA KUNYE NENGQINISEKISO YOKUCHANEKA KWENGXELO YONYAKA

IBhunga linoxanduva lokulungisa iingxelo zemali zonyaka zePlayhouse Company kwakunye nolokugweba okwenziwa kwezi nkukacha.

Ibhunga linoxanduva lokusungula nokumilisela inkqubo yolawulo lwangaphakathi elungiselelwe ukunika ingqiniseko enengqiqo ngokuphathelele kubulungisa nokuthembeka kweengxelo zemali zonyaka.

Ngokoluvo lwam, iingxelo zemali ziyibonisa ngokufanelekileyo imisebenzi yePlayhouse Company yonyaka-mali ophela ngomhla wama-31 kweyoKwindla ngo-2017.

Kuye kusetyenziswane noMphicothi-zincwadi Jikelele ukuze avakalise uluvo lwakhe oluzimeleyo ngeengxelo zemali zonyaka zePlayhouse Company.

Iingxelo zemali zonyaka zePlayhouse Company zonyaka ophela ngomhla wama-31 kweyoKwindla ngo-2017 ziphicothwe nguMphicothi-zincwadi Jikelele kwaye ingxelo yazo inikwe kwiphepha 52.

Iingxelo zemali zonyaka zePlayhouse Company ezibalulwe kwiphepha XX ukusa kwiphepha 58-80 zivunyiwe.



Nkszn Linda Bukhosini

INGqonyela kwanoMlawuli wezobugcisa

Umhla: 28 kweyeKhala 2017



Nkszn Hlengiwe Christophina Mgabedeli

USihlalo weBhunga

Umhla: 28 kweyeKhala 2017

2. INGXELO YENQONYELA KWANOMLAWULI WEZOBUGCISA

Ukusebenza kwemali

Ingeniso

Ingeniso iyonke inyuke ngomyinge wama-26% isuka kwizigidi ezingama-R71 yaya kuthi ga kwizigidi ezingama-R89.

- Oku kunyuka kubangelwe ikakhulu kukunyuka kwesibonelelo esiyinkunzi esinakanwa ngokweGRAP23 ngezigidi ezili- R17 elinganiswa ngokunakana ixabiso elifanelekileyo lempahla yexabiso kwixabiso elizizigidi ezi-R3.

Esi sibonelelo zifunyenwe kwiSebe lezoBugcisa neNkcubeko silungiselelwe ukuxhasa iiprojekthi ezingundoqo ngemali.

Iindleko zokusebenza

Zihle ngokubonakalayo iindleko zokusebenza ngomyinge we-1% zisuka kwizigidi ezingama-R74 zaya kuthi ga kwizigidi ezingama-R73.

Intsalela yonyaka

Intsalela yonyaka ka-2016 ezizigidi ezili-R15.8 iquka isibonelelo esiyinkunzi esinakanwa ngokweGRAP23 ngezigidi ezili-R17.

Ubume bezimali

Uphele unyaka iPlayhouse Company ibonisa ubume obuncumisayo ngokwasezimalini.

- Ukuhla kwempahla yexabiso engasetyenziswayo ngezigidi ezi-R6 kubangelwe ikakhulu ziindleko zokuthotywa kwexabiso ezizigidi ngaphaya kweendleko zempahla yexabiso ezuzwe apha enyakeni.
- Impahla yexabiso esetyenziswayo inyuke yaya kuthi ga kwizigidi ezi-R6.4 yaye oku kubangelwe kukunyuka kwemali eziinkozo nenye imali ngezigidi ezi-R6.
- Amatyala akhoyo ahle ngezigidi ezi-R15. Oku kudalwe kukuhla kwemivuzo erhoxisiweyo.

Ukungena kwemali

Imali eziinkozo kunye nenye imali inyuke ngezigidi ezi-R6 isuka kwizigidi ezili-R105 yaya kuthi ga kwizigidi ezili-R111. Imali engenayo evela kwimisebenzi ezizigidi ezili-R12 ilinganiswe ngemali engenayo evela kwiintshukumo zotyalo-mali ezizigidi ezi-R6.

Inkqubo-sikhokelo yokuphatheka

IBhunga libambisene nabaphicothi-zincwadi bangaphandle limisele inkqubo-sikhokelo yalo yemigangatho eyamkelekileyo yokuphatheka nokubaluleka ngolu hlobo:

- Ingeniso nenkcitho – 1%
- Impahla yexabiso namatyala – 3%

Ukuphatheka kubalwa ngokwale nkqubo-sikhokelo ingentla apha, kodwa kukho iimeko ezifuna ukuphatheka okungqongqo uze umgangatho ulungelelaniswe ngokufanelekileyo. Maxa wambi kuye kusetyenziswe indlela yobulumko xa kumiselwa le migangatho yokuphatheka.



Nkszn Linda Bukhosini

Inqonyela kwanoMlawuli wezobugcisa

3. INGXELO EYENZIWA NGUMPHICOTHI-ZINCWADI JIKELELE NGEPLAYHOUSE COMPANY EPALAMENTE

Ingxelo emalunga nophicoto-zincwadi lweengxelo zemali

Uluvo

1. Ndenze uphicoto-zincwadi lweengxelo zemali zePlayhouse Company ezikwiphepha lama-55 ukusa kwelama-80, eziquka ubume beengxelo zemali ukuya kuthi ga ngomhla wama-31 kweyoKwindla ngo-2017, ingxelo yokusebenza kwemali, ingxelo yeenguqu kwimpahla yexabiso eyintsalela, ingxelo yokungena kwemali, ingxelo yokusebenza kwemali – imali ekhoyo ithelekiswa nemali eqingqiweyo yonyaka ophelayo, kwakunye namanqaku eengxelo zemali, kuquka isishwankathelo semigaqo-nkqubo ebalulekileyo yokunik'ingxelo.
2. Ngokuluvo lwam, iingxelo zemali zibonisa ngobulungisa ubume bezemali bePlayhouse Company ukuya kuthi ga ngomhla wama-31 kweyoKwindla ngo-2017, yaye ukusebenza kwemali kunye nokungena kwemali kulo nyaka kungqinelana neMigangatho yaseMzantsi Afrika yeMikhwa eyamkelekileyo Jikelele yoKunik'ingxelo (iMigangatho yeGRAP yaseMzantsi Afrika) kwakunye nezinto eziyimfuneko zoMthetho woLawulo lweMali kaRhulumente waseMzantsi Afrika, 1999 (uMthetho woku-1 ka-1999) (iPFMA).
3. Olwam uphicoto-zincwadi ndilwenze ngokungqinelana neMigangatho yeHlabathi yoPhicoto-zincwadi (i-ISA). Uxanduva lwam phantsi kwale migangatho luchazwa banzi kwicandelo lengxelo yam elingoxanduva lomphicoto-zincwadi kuphicoto-zincwadi lweengxelo zemali.
4. Andinabudlelwane neli ziko ngokungqinelana neKhowudi yeenqobo ezisesikweni zabacwangcisi-mali abanobuchule yeBhodi yeeNqobo ezisesikweni zeHlabathi zabaCwangcisi-mali (ikhowudi yeESBA) kwakunye nezinto eziyimfuneko zeenqobo ezisesikweni eziyimfaneko kuphicoto-zincwadi endilwenzayo eMzantsi Afrika. Ndiluzalisekile olunye uxanduva lwam lweenqobo ezisesikweni ngokungqinelana nezi zinto ziyimfuneko kwakunye neKhowudi yeESBA.
5. Ndikholelwa ekubeni ubungqina bophicoto-zincwadi endibufumeneyo banele yaye bufanelekile ukuze ndikwazi ukuseka uluvo lwam.

Ukugxininisa umba

6. Nditsala umdla kulo mba ulapha ngezantsi. Uluvo lwam kulo mba aluqukanga.

Ukuxelwa kwakhona kwamanani angqinelanayo

7. Njengoko kubhengeziwe kwinqaku lesi-2 kwiingxelo zemali, amanani angqinelanayo omhla wama-31 kweyoKwindla ngo-2016 axeliwe kwakhona ngenxa yempazamo kwiingxelo zemali zeli ziko kunyaka ophele ngomhla wama-31 kweyoKwindla ngo-2017.

Uxanduva lwegunya elinika ingxelo

8. Ibhunga, eliquka igunya elinika ingxelo, linoxanduva lokulungisa nokunika ngobulungisa iingxelo zemali ngokungqinelana neMigangatho yeGRAP yaseMzantsi Afrika kunye nezinto eziyimfuneko zePFMA kwakunye nolawulo lwangaphakathi olubonwa ligunya elinik'ingxelo njengoluyimfuneko ukuze kulungiswe iingxelo zemali ezingenamposiso, nokokuba yenziwe ngobuqhinga okanye ngempazamo.
9. Ngethuba kulungiswa iingxelo zemali uxanduva lwegunya elinik'ingxelo kukuvavanya okokuba iziko linako kusini na ukuqhubeka njengenkxalabo eqhubekayo, ukubhengeza imiba enxulumene nenkxalabo eqhubekayo kwanokusebenzisa isiseko sokunik'ingxelo senkxalabo eqhubekayo ngaphandle kwaxa igunya elinik'ingxelo linenjongo yokuliphelisa ishishini leziko okanye lilikise ukusebenza, okanye xa lingenayo enye indlela ngaphandle kokwenjenjalo.

Uxanduva lomphicoto-zincwadi jikelele kuphicoto-zincwadi lweengxelo zemali

10. Iinjongo zam kukufumana ingqiniseko efanelekileyo malunga nokokuba iingxelo zemali zizonke azinayo kusini na imposiso, eyenziwe ngobuqhinga okanye ngempazamo, kunye nokukhupha ingxelo yomphicoto-zincwadi equka uluvo lwam. Ingqiniseko efanelekileyo yingqiniseko ekwinqwanqwa eliphezulu kodwa ayisiso isiqinisekiso sokokuba uphicoto-zincwadi olwenziwe ngokumisela kweISA luya kusoloko luyibona impazamo eyenziweyo xa ikho. Iimposiso zivela xa kusenziwa ubuqhinga okanye ngempazamo yaye zithatyathwa njengeziphathekayo xa zinokuthi zizodwa okanye xa zidityanisiwe zibe nefuthe kwizigqibo zoqoqosho zabasebenzisi ezithatyathwe ngenxa yezi ngxelo zemali.
11. Inkcazelo ethe kratya yoxanduva lwam kuphicoto-zincwadi lweengxelo zemali iquke kwisihlomo sengxelo yomphicoto-zincwadi.

Ingxelo yophicoto-zincwadi lweengxelo yonyaka yokusebenza

Intshayelelo kunye nomda

12. Ngokungqinelana noMthetho woPhicoto-zincwadi kuRhulumente waseMzantsi Afrika, 2004 (uMthetho wama-25 ka-2004) (iPAA) kwakunye nesaziso gabalala esikhutshelwe lo mthetho, ndinoxanduva lokuyixela imiba efun'ukuphandwa ephathekayo ekwiinkcukacha zokusebenza ezixeliweyo ithelekiswa neenjongo ezixelwe ngenx' engaphambili zeenkqubo ezikhethiweyo ezinikwe kwingxelo yonyaka yokusebenza. Ndenze iinkqubo zokufumanisa imiba efun'ukuphandwa, ingezizo ezokuqokelela ubungqina bokuvakalisa ingqiniseko.
13. Ezi nkqubo zijongana neenkukacha zokusebenza ezixeliweyo, ekufuneka zibe zisekelwe kumaxwebhu

eziko ocwangciso lokusebenza aphunyeziweyo. Andikuvavanyanga ukugqibelela nokufaneleka kwezalathisi zokusebenza eziqukwe kumaxwebhu ocwangciso. Kwakhona ezi nkqubo zam azifikelelanga kulo naluphi na udandalaziso okanye amabango anxulumene namacebo okusebenza acetyiweyo nakwiinkcukacha zexesha elizayo ezinokuthi ziqukwe njengenxalenye yeenkcukacha zokusebenza ezixeliweyo. Ngoko ke iziphumo endizifumeneyo aziyiquki le miba.

14. Ndikuvavanyile ukuba luncedo nokuthembeka kweenkcukacha zokusebenza ezixeliweyo ngokungqinelana nenkqubo eveliswe kwinkqubo-sikhokelo yolawulo lokusebenza kunye nokunik'ingxelo, njengoko kuchazwe kwisaziso gabalala kwezi nkqubo zikhethiweyo zilandelayo ezinikwe kwingxelo yonyaka yokusebenza yeziko yonyaka ophele ngomhla wama-31 kweyoKwindla ngo-2017:

Inkqubo	Amaphepha kwingxelo yonyaka yokusebenza
Inkqubo 2 – uphuhliso lweshishini	32-34
Inkqubo 3 – ukumanywa kwengeniso	34-35

15. Ndisebenzise iinkqubo ukufumanisa ukuba iinkcukacha zokusebenza ezixeliweyo zinikwe ngokukuko kusini na kwakunye nokufumanisa ukuba ukusebenza kuyangqinelana namaxwebhu avunyiweyo ocwangciso lokusebenza. Ndisebenzise ezinye iinkqubo ukufumanisa ukuba izalathisi kunye neenjongo ezinxulumene nazo zinokulinganiswa yaye zifanelekile, ndaza ndavavanya ukuthembeka kweenkcukacha zokusebenza ezixeliweyo ukuze ndifumanise okokuba zinyanisekile, zichanekile yaye zigqibelele.
16. Andiyivakalisanga imiba efun'ukuphandwa ekubeni luncedo nasekuthembekeni kweenkcukacha zokusebenza ezixeliweyo kwezi nkqubo zilandelayo:
 - Inkqubo 2 – uphuhliso lweshishini
 - Inkqubo 3 – ukumanywa kwengeniso.

Omnje umba

17. Nditsala umdla kulo mba ulapha ngezantsi. Uluvo lwam kulo mba aluguqukanga.

Ukuphunyezwa kweenjongo ezicetyiweyo

18. Jonga kwingxelo yonyaka yokusebenza ekwiphapha 27 ukusa kwiphapha 36 ukuze ufumane iinkcukacha ezingokuphunyezwa kweenjongo ezicetyiweyo zonyaka kwakunye nengcaciso enikiweyo kwiinjongo eziliqela eziphunyezwe ngokugqithisileyo.

Ingxelo yophicotho-zincwadi lokuthotyelwa kwemithetho

Intshayelelo nomda

19. Ngokungqinelana nePAA kwakunye nesaziso esikhutshelwe lo mthetho ndinoxanduva lokuyixela imiba efuna ukuphandwa engokuthobela imithetho kweli ziko

nemiba ekhethekileyo kwimithetho engundoqo. Ndenze iinkqubo zokufumana imiba efun'ukuphandwa ingezizo ezokuqokelela ubungqina ukuze ndivakalise ingqiniseko.

20. Andifumanisanga zehlo ziphathekayo zokungawuthobeli umthetho kwizinto ezikhethekileyo eziyimfuneko zemithetho esebenzayo njengoko kubalulwe kwisaziso gabalala esikhutshwe ngokomthetho iPAA.

Ezinye iinkcukacha

21. Igunya elinik'ingxelo ePlayhouse Company linoxanduva lwezinye iinkcukacha. Ezinye iinkcukacha ziquka iinkcukacha eziqukwe kwingxelo yonyaka. Ezinye iinkcukacha aziziquki iingxelo zemali, ingxelo yazo yomphicothi-zincwadi kwakunye nezo nkqubo zikhethiweyo ezinikwa kwingxelo yonyaka yokusebenza nezixelwe ngokukhethekileyo kwingxelo yomphicothi-zincwadi.
22. Uluvo lwam kwiingxelo zemali nakwimiba efun'ukuphandwa kwiinkcukacha zokusebenza ezixeliweyo kunye nokuthotyelwa kwemithetho aluziquki ezinye iinkcukacha yaye andiluvakalisi uluvo lophicotho-zincwadi okanye nasiphi na isigqibo sengqiniseko kuzo.
23. Ngokunxulumene nophicotho-zincwadi endilwenzileyo, uxanduva lwam kukufunda ezinye iinkcukacha ndize ndigqale okokuba ezinye iinkcukacha azingqinelani kakhulu kusini na neengxelo zemali kwakunye neenkqubo ezixeliweyo ezinikwe kwingxelo yonyaka yokusebenza okanye ulwazi lwam endilufumene kuphicotho-zincwadi, okanye xa zikhangeleka zinemposiso ephathekayo. Xa ndigqiba ekubeni kukho imposiso ephathekayo kwezinye iinkcukacha ngokubhekisele kumsebenzi esele ndiwenzile kwezinye iinkcukacha ezifunyenwe ngaphambi komhla wale ngxelo yomphicothi-zincwadi, kufuneka ndiyixele loo mposiso.

Intsilelo kulawulo lwangaphakathi

24. Ulawulo lwangaphakathi ndilugqale ngokuphathelele kuphicotho-zincwadi endilwenzileyo lweengxelo zemali, ingxelo yonyaka yokusebenza kunye nokuthotyelwa kwemithetho esebenzayo; kodwa ke injongo yam ibingeyiyo eyokuvakalisa nayiphi na ingqiniseko kulo. Akukho kusilela kuphathekayo endikufumeneyo kulawulo lwangaphakathi.

Auditor-General
Pietermaritzburg
31 kweyoKhala 2017



Isihlomelo – Uxanduva lomphicothi-zincwadi jikelele kuphicotho-zincwadi

1. Njengexalenye yophicotho-zincwadi olungqinelana neISA, ndigweba ngobuchule yaye ndiyigcine inobuchule intandabuzo yam xa ndisenza uphicotho-zincwadi lweengxelo zemali, kunye neenkqubo endizenze kwiinkcukacha zokusebenza ezixeliweyo zeenkqubo ezikhethiweyo nakwindlela iziko eliyithobela ngayo imithetho ngokunxulumene nemiba ekhethiweyo.

lingxelo zemali

2. Ngaphaya koxanduva lomphicotho-zincwadi lweengxelo zemali njengoko kuchazwe kwingxelo yomphicothi-izincwadi ndenza ezi zinto zilandelayo:
 - ukwalatha nokuvavanya ubungozi bemposiso ephathekayo kwiingxelo zemali nokokuba imposiso leyo yenziwe ngobuqhinga okanye ngempazamo, ukuyila nokwenza iinkqubo zophicotho-zincwadi eziphendula kobu bungozi, kunye nokufumana ubungqina bophicotho-zincwadi obaneleyo nobufanelekileyo ukuze benze isiseko soluvo lwam. Ubungozi bokungayiboni imposiso ephathekayo eyenziwe ngobuqhinga bungaphezulu kobo bemposiso eyenziwe ngempazamo, njengoko ubuqhinga bunokuthi bubandakanye iyelenqe, ukuqhatha, ukushiy' izinto ngaphandle ngabom, ukugqwetha, okanye ukungananzwa kolawulo lwangaphakathi.
 - ukuluqondisisa ulawulo lwangaphakathi olunento yokwenza nophicotho-zincwadi khon'ukuze ndiyile iinkqubo zophicotho-zincwadi ezifanelekileyo kodwa oku ndingakwenzi ngenjongo yokuvakalisa uluvo ngokusebenza ngokukoko kolawulo lwangaphakathi lweziko.
 - ukuvavanya ukufaneleka kwemigaqo-nkqubo yokunik'ingxelo esetyenziswayo kwakunye nokuqiqa kothelekelelo lokunik'ingxelo kunye nokubhengeza okunxulumeneyo okwenziwe ligunya elinik'ingxelo.
 - ukugqiba ngokufaneleka kwendlela igunya elinik'ingxelo elisisebenzisa ngayo isiseko sokunik'ingxelo yenkxalabo eqhubekayo xa kulungiswa iingxelo zemali. Kwakhona, ngokobungqina bophicotho-zincwadi endibufumeneyo ndigqiba okokuba kukho ukuthandabuza okumandla okunxulumene nezehlo okanye iimeko ezinokwenza intandabuzo enkulu yokokuba iziko lingaqhubeka njengenkxalabo eqhubekayo. Xa ndifumanisa ukuba kukho ukuthandabuza okumandla kufuneka ndichaze kwingxelo yomphicothi-zincwadi ukubhengezwa kweengxelo zemali ezinxulumene ngokuthandabuzeka kwazo okanye, xa oku kubhengezwa kungonelanga, ndiluguqule uluvo lweengxelo zemali. Izigqibo zam zisekelwe ziinkcukacha endizifumeneyo ngomhla ndisenza ingxelo yomphicothi-zincwadi. Noxa kunjalo, izehlo okanye iimeko zexa elizayo zingabangela okokuba eli ziko liyeke ukuba yinkxalabo eqhubekayo.
 - ukuvavanya inkcazelo iyonke, ubume, oko kuqulethwe ziingxelo zemali kuquka nokubhengezwa, kwanokuba iingxelo zemali zinika intengiselwano nezehlo ngendlela enobulungisa.

Unxibelelwano nabo banoxanduva lolawulo

3. Ndiye ndinxibelelane negunya elinik'ingxelo malunga, phakathi kwezinye izinto, nomda ocetyiweyo kunye nexesha lomphicotho-zincwadi kwakunye nemiba ephathekayo efun'ukuphandwa yophicotho-zincwadi, kuquka nayo nayiphi na intsilelo emandla kulawulo lwangaphakathi endithi ndizifumane xa ndisenza uphicotho-zincwadi.
4. Kwakhona ndiye ndiqinisekise igunya elinik'ingxelo okokuba ndizithobele iinqobo ezisemgangathweni eziyimfuneko ezimalunga nokuzimela kwam, ndize ndibuxele bonke ubudlelwane neminye imiba enokucamngcwa njengenefuthe ekuzimeleni kwam.

4. INGXELO YOKUSEBENZA KWEMALI

Ingxelo Yobume Bezimali

Amanqaku	EyoKwindla		Iyaxelwa kwakhona ngeyoKwindla	
	2017	2016	2017	2016
	R		R	
IMPAHLA YEXABISO				
Impahla yexabiso engasetyenziswayo				
Impahla yexabiso elilifa	3.1	88 330 000		88 330 000
Ipropati, oomatshini nezixhobo	3.2	102 747 781		84 617 716
Impahla yexabiso engenakuchukunyiswa	3.3	799 076		49 269
		98 640 508		113 111 779
Impahla yexabiso ekhoyo				
Izintlu zempahla	4	536 877		509 710
Urhwebo nezinye izinto ezifunyanwayo	5	1 366 265		1 961 922
Imali eziinkozo nenye imali	6	96 737 366		110 640 147
		290 517 365		286 108 764
INTSALELA YEMPAHLA YEXABISO NAMATYALA				
Impahla yexabiso eyintsalela				
Intlanganisela yentsalela		266 769 171		254 199 897
		23 748 194		31 908 867
Amatyala akhoyo				
Urhwebo nezinye izinto ezihlawulwayo	7	8 584 395		7 403 527
Ingeniso erhoxisiweyo	8	15 163 799		24 505 340
		290 517 365		286 108 764
Impahla yexabiso eyintsalela iyonke namatyala				
		290 517 365		286 108 764

Ingxelo Yokusebenza Kwemali

Amanqaku	EyoKwindla		Iyaxelwa kwakhona ngeyoKwindla	
	2017	2016	2017	2016
	R		R	
Ingeniso		95 903 995		89 171 811
Izibonelelo	9	75 055 947		75 728 084
Enye ingeniso yokusebenza	10	20 848 048		13 443 727
Nganeno : Inkcitho		91 139 810		80 630 049
Iindleko zokuvelisa	11	16 662 942		12 671 092
Iindleko zeenkonzozemveliso nezobuchwepheshe	12	5 000 576		4 401 456
Iindleko zendawo yokusebenzela		1 576 122		1 435 993
Iindleko zokugcina nokulungisa	13	2 127 389		2 463 321
Iindleko zokhuseleko		3 429 010		3 060 096
Iindleko zecandelo le-HR, elezemali kunye neleenkonzo zequmrhu		5 318 450		5 625 909
Irhafu		7 697 389		7 202 134
Enye inkcitho yokusebenza	14	1 288 502		1 164 504
Ukuhla kwexabiso nokuhlulwa kwamatyala		14 765 879		12 484 488
Imivuzo	15	33 273 551		30 121 056
Intsalela evela kwimisebenzi	16	4 764 185		8 541 762
Inzala efunyenweyo		7 805 090		7 256 621
Intsalela yonyaka	17	12 569 275		15 798 383

Ingxelo Yeenguqu Kwimpahla Yexabiso Eyintsalela

Amanqaku	EyoKwindla		Iyaxelwa kwakhona ngeyoKwindla	
	2017	2016	2017	2016
	R		R	
Intsalela eyintlanganisela evulayo njengoko kuxeliwe ngenx'engaphambili		254 199 897		238 401 514
Intsalela eyintlanganisela yonyaka njengoko ixeliwe ngenx'engaphambili				15 798 383
Ingeniso yeenkonzo zodidi oluthile				7 202 134
Ukunyuka kwerhafu				(7 202 134)
Intsalela yonyaka		12 569 275		15 798 383
Intlanganisela yentsalela evalayo	18	266 769 171		254 199 897

Ingxelo Yokungena Kwemali

Amanqaku	EyoKwindla	Iyaxelwa kwakhona ngeyoKwindla
	2017	2016
	R	R
Imali engenayo yemisebenzi		
Imali efunyenwe kubaboneleli nakubaxumi	111 663 450	107 276 509
Imali ehlawulwe abaniki beenkonzo nabasebenzi	(99 724 684)	(102 091 829)
Imali eyenziwe ngemisebenzi	19	
Inzala engenileyo	11 938 756	5 184 681
	7 805 090	7 256 621
Imali eyintsalela eyenziwe ngemisebenzi	19 743 846	12 441 302
Imali engenayo esetyenziswe kutyalo-mali		
Izongezo kwipropati, oomatshini nezixhobo	(32 843 016)	(6 555 696)
Izongezo kwimpahla engenakuchukunyiswa	(819 481)	(18 679)
Inzuzo yokuthengiswa kwepropati, oomatshini nezixhobo	15 870	-
Imali eziinkozo eyintsalela esetyenziswe kutyalo-mali	(33 646 626)	(6 574 375)
Imali engenayo evela kwimisebenzi yezemali		
Ukuhla kwemali-mboleko yexesah elide	-	-
Imali eziinkozo eyintsalela yemisebenzi yezemali	-	-
Intsalela (ukuhla) yokunyuka kwemali eziinkozo nanye imali	(13 902 781)	5 866 926
Imali eziinkozo nanye imali ekuqaleni konyaka	110 640 147	104 773 220
Imali eziinkozo nanye imali ekupheleni konyaka	96 737 366	110 640 147
6		

Imigaqo-Nkqubo Yokunik'ingxelo

1 Imigaqo-nkqubo yokunik'ingxelo

- 1.1.** Iingxelo zemali zilungiswe ngokungqinelana neMigangatho eYamkeleke Jikelele yeMikhwa yoKunik'ingxelo (GRAP) kuquka naziphi na ezinye iinkcazo, izikhokelo kunye nemiyalelo ekhutshwe yiBhodi yeMigangatho yoKunik'ingxelo ngokuyalela kweCandelo lama-55(1)(b) loMthetho woLawulo lweMali kaRhulumente, (uMthetho woku-1 ka-1999 olungiswe nguMthetho wama-29 ka-1999). Impahla yexabiso, amatyala, ingeniso kunye nenkcitho azilinganiswa ngaphandle kwaxa ukulinganiswa kwazo kufunwa okanye kuvunyelwa nguMigangatho weGRAP. Imigaqo-nkqubo yokunik'ingxelo isetyenziswa kunye naleyo isetyenziselwe ukunika iingxelo zemali zonyaka ogqithileyo, ngaphandle kwalapho kucaciswe ngokuthe gca. Iinkcukacha zazo naziphi na iinguqu kwimigaqo-nkqubo yokunik'ingxelo zichazwe kumgaqo-nkqubo ofanelekileyo.

Iingxelo zemali zonyaka zilungiswe phantsi kwesiseko esongezelekileyo sokunik'ingxelo kwaye zingqinelana nemvumelwano yeendleko ngaphandle kwezixhobo zemali ezilinganise ngexabiso elifanelekileyo.

Le migaqo-nkqubo yokunik'ingxelo ingqinelana neyanyakenye.

Iimigangatho yeGRAP evunye yiBhodi yeMigangatho yoKunik'ingxelo nesetyenziswa liziko iPlayhouse Company.

GRAP 1 Ukunikwa kweengxelo zemali

GRAP 2 Iingxelo zokungena kwemali

GRAP 3 Imigaqo-nkqubo yokunik'ingxelo, iinguqu kwintelekelelo yokunik'ingxelo neempazamo

GRAP 6 Iingxelo zemali ezimanywayo kwakunye nokunik'ingxelo kwamaziko alawulwayo

GRAP 9 Ingeniso evela kulwananiso

GRAP 12 Izintlu zempahla

GRAP 13 Iingqeshiso ngomhlaba

GRAP 14 Imisitho esemva komhla wokunik'ingxelo

GRAP 17 Ipropati, oomatshini nezixhobo

GRAP 19 Iminikelo, amatyala anokwenzeka kunye nempahla yexabiso enokubakho

GRAP 100 Impahla yexabiso engasetyenziswayo ethengiswayo kunye nemisebenzi enqunyanyisiweyo

GRAP 31 Impahla yexabiso engenakuchukunyiswa

IPSAS 20 Ukubhengeza kwamaqela okunxulumeneyo

GRAP 21 Ukonakaliswa kwempahla yexabiso engangenisi mali (eli gatya alisebenzi ePlayhouse Company)

GRAP 23 Iminikelo nerhafu yengeniso engeyiyo eyolwananiso (kusebenza imithetho-siseko yomgaqo-nkqubo)

GRAP 24 Ukunikwa kweenkcukacha zohlahlo-lwabiwo mali (kusetyenziswa imithetho-siseko yomgaqo-nkqubo)

GRAP 25 Amaqithi-qithi abasebenzi

GRAP 26 Ukonakaliswa kwempahla yexabiso engenisa imali

GRAP 103 Impahla yexabiso elilifa

GRAP 104 Izixhobo zemali

Ezi ngxelo zilandelayo zeMigangatho eyamkeleke Jikelele yeMikhwa yoKunik'ingxelo ezikhutshwe yiBhodi yeMigangatho yoKunik'ingxelo zikhutshiwe kodwa azisebenzi kwiziko iPlayhouse Company:

GRAP 4 Ifuthe leenguqu kwixabiso lolwananiso lwangaphaya kwemida yelizwe

GRAP 5 Imboleko

GRAP 7 Ukunik'ingxelo yotyalo-mali kumanyano

GRAP 8 Ukunika ingxelo yemali kwinzala efunyenwe kutyalo-mali oluhlanganisiweyo

GRAP 10 Ukunik'ingxelo yemali kuqoqosho olunemali eguqu-guquka ngamandla

GRAP 11 Ikontraktha zokwakha

GRAP 16 Utyalo-mali kwipropati

GRAP 18 Ukunika ingxelo ngezigaba

GRAP 27 Ezolimo

GRAP 105 Ukugqithiswa kwemisebenzi phakathi kwamaziko aphantsi kolawulo olufanayo

GRAP 106 Ukugqithiswa kwemisebenzi phakathi kwamaziko angekho phantsi kolawulo olufanayo

GRAP 107 Umanyano

IFRS 4 Izivumelwano ze-inshorensi

IFRS 6 Ukuhlola nokuvavanya izimbiwa

IAS 12 Irhafu eyingeniso

IFRIC 12 Ulungelelwaniso lwemvume yenkonzo

SIC 25 Ingeniso yerhafu - iinguqu kubume berhafu yeziko okanye kubanini-zabelo beziko

SIC 29 Ulungelelwaniso lwemvume yenkonzo

Ezi ngxelo zilandelayo zemikhwa eyamkeleke jikelele yokunik'ingxelo (GRAP) ezikhutshwe yiBhodi yeMigangatho yoKunik'ingxelo ziyasebenza kodwa azikasebenzi ngokupheleleyo kumaziko karhulumente kashedyuli 3A no3C nakumaziko omgaqo-siseko:

GRAP 20 Ukubhengeza kwamaqela okunxulumeneyo (kusetyenziswa imithetho-siseko yomgaqo-nkqubo)

GRAP 32 Ulungelelwaniso lwemvume yenkonzo: Umnikeli

GRAP 108 Izinto zomthetho ezifunyanwayo

Imithetho-siseko yokunakana neyokulinganisa kwezi ngxelo zeGRAP zingasentla apha xa zithelekiswa neengxelo zeGAAP ezingene endaweni yazo azohlukanga kungenjalo azibonisi mahluko ungako kwizinto ezininike nezibhengezwe kwiingxelo zemali.

Imigaqo-Nkqubo Yokunik'ingxelo (iyaqhutywa)

1.2. Ukusetyenziswa kwentelekelelo nokugweba

Ukulungiswa kweengxelo zemali kufuna into yokokuba abaphathi benze isigwebo, intelekelelo kunye nezizindlo ezichaphazela ukusetyenziswa kwemigaqo-nkqubo yokunik'ingxelo kunye namanani axeliweyo empahla yexabiso namatyala, ingeniso kunye nenkcitho. Intelekelelo kunye nezizindlo ezayamene nayo zisekelwa kumava enx'engaphambili kwakunye nakwezinye izinto ekukholeleka ukuba ziyavakala phantsi kweemeko, yaye iziphumo zazo zisisiseko sokwenza isigwebo ngexabiso lempahla yexabiso kunye namatyala angacacanga avela kweminye imithombo. Iziphumo zokwenene zingahluka kule ntelekelelo.

Uphononongo lwentelekelelo kunye nezizindlo luyinto eqhubekayo. Uphengululo lwentelekelelo yokunik'ingxelo lunakanwa ngexesha ephengululwa ngalo intelekelelo xa uphengululo olo luchaphazela kuphela elo xesha okanye lunakanwa ngexesha lophengululo kwanangexesha elizayo xa uphengululo luchaphazela ixesha langoku nexesha elizayo.

Iinkcukacha ngemiba ebalulekileyo yentelekelelo, intandabuzo kunye nezigwebo ezingundoqo ekusetyenzisweni kwemigaqo-nkqubo yokunik'ingxelo enefuthe elikhulu kwinqanaba elinakanwa kwiingxelo zemali zichazwa ngokukodwa kweli nqaku lilandelayo:

Inqaku 1.3 Ipropati, oomatshini nezixhobo

Inqaku 1.5 Impahla yexabiso engenakuchukunyiswa

Inqaku 1.12 Amalungiselelo

1.3. Ipropati, oomatshini nezixhobo

Ipropati, oomatshini nezixhobo zixelwe kwiindleko zembali ezinganeno kwentlanganisela yokuhla kwexabiso kunye nentlanganisela yelahleko yokonakaliswa. Ubomi obuluncedo bempahla yexabiso bufumaneka emva kokuthabathela ingqalelo zonke iimeko ezichaphazela iPlayhouse Company. Inkqubo yobomi obuluncedo nokuhla kwexabiso lempahla yexabiso iyavavanywa rhoqo ngonyaka kwaye naziphi na iinguqu kwentelekelelo zinikwa ingqalelo xa kuqingqwa iindleko zokuhla kwexabiso nokuhlulwa amatyala ngemali ebekelwe wona. Ixabiso eliyintsalela loomatshini nezixhobo liyinto engekho njengoko impahla yexabiso isetyenziswa ubomi bayo bonke.

Xa impahla yexabiso ithengwa liziko likarhulumente kungekho okanye kukho ingqalelo encinane (oko kukuthi intengiselwano yolwananiso), ixabiso lithatyathwa njengeilingana nexabiso elifanelekileyo lempahla leyo ngomhla ethengwa ngawo.

Impahla yexabiso inikwa ixabiso elifanelekileyo ngenkqubo yokubuyisela ixabiso elihlileyo. Xa ingekho imalike esebenzayo, ixabiso elifanelekileyo lempahla limiswa ngokuthelekisa nenye impahla eneempawu ezifanayo.

Amalungu olaleliso amakhulu athatyathwa njengepropati, oomatshini nezixhobo xa iziko likarhulumente lilindele ukuwasebenzisa amatyeli aliqela. Kananjalo xa amalungu olaleliso amakhulu enokusetyenziswa kuphela ngokunxulumene nombala othile wepropati, oomatshini nezixhobo axelwa njengepropati, oomatshini nezixhobo.

Ukuhla kwexabiso kubalwa kwinkqubo yomgca ongqalileyo, ukususa ixabiso lempahla yexabiso nganye kumaxabiso athelekelelweyo entsalela ngaphaya kobomi bayo obuluncedo obuthelekelelweyo ngolu hlobo lulandelayo:

Izakhiwo	: Iminyaka engama-50
Iinqwelo-mafutha	: Iminyaka emi-5
Ifanitshala ye-ofisi kunye nezinye izixhobo	: Iminyaka emi-5
Izixhobo zekhompyutha	: Iminyaka emi-3
Iqonga	: Iminyaka emi-4
Izixhobo zendawo yokusebenzela	: Iminyaka emi-5

Alithotywa ixabiso lemisebenzi yobugcisa, kwaye impahla yeqonga, impahla yemiboniso, umculo kunye nemibhalo-ngqangi iba yilahleko isakufunyanwa.

Inkcitho elandelayo enxulumene nepropati, oomatshini nezixhobo yenziwa xa kunokwenzeka ukuba inzuzo yoshishino yexesha elizayo yokusetyenziswa kwempahla yexabiso iza konyuswa. Yonke enye inkcitho elandelayo ibonwa njengenkcitho ngexesha elo yenziwe ngalo.

1.4. Ukonakaliswa

Impahla yexabiso engeyiyo imali

Ixabiso lempahla yexabiso yePlayhouse Company ngaphandle kwezintlu zempahla liyaphononongwa rhoqo ngomhla wokunika ingxelo ukufumanisa okokuba akukho konakaliswa kukhoyo kusini na. Xa kukho ukonakaliswa okukhoyo, kuye kuthelekelelwe ixabiso elinokufunyanwa ngempahla leyo.

Ixabiso elinokufunyanwa ngempahla yexabiso lixabiso elikhulu lokusetyenziswa kwayo kunye nexabiso layo elifanelekileyo kususwe iindleko zokuyithengisa. Ngeenjongo zokuhlola ukonakaliswa kwempahla kuye kuvavanywe imeko yempahla yexabiso ukuze kuqinisekise ixabiso layo lokuyisebenzisa. Xa impahla yexabiso yonakele kangokuba ingenakulungiseka iyalahlwa.

Ilahleko yokonakaliswa kwempahla inikwa ingqalelo xa ixabiso lenzala lempahla yexabiso lingaphaya kwexabiso elinokufunyanwa kuyo. Ilahleko yokonakaliswa igqalwa kwingeniso okanye kwilahleko.

Ukurhoxiswa kokonakaliswa

Ilahleko yokonakaliswa iyarhoxiswa xa kubekho iinguqu kwentelekelelo esetyenziselwe ukumisela ixabiso elinokufunyanwa ngempahla leyo. Ilahleko yokonakaliswa irhoxiswa ukufikelela kuphela apho ixabiso lokuyigcina linganeno kwexabiso eliya kube limiswe ngentsalela yokuhla kwexabiso okanye ukuhlawulwa kwamatyala xa kungekho lahleko yakonakaliswa iboniweyo.

1.5. Impahla yexabiso engenakuchukunyiswa

Impahla yexabiso engenakuchukunyiswa iboniswa ngexabiso elinganeno kwentlanganisela yokuhlulwa kwamatyala kunye nelahleko yokonakaliswa. Ubomi obuluncedo bempahla yexabiso engenakuchukunyiswa buvavanywa rhoqo ngonyaka kwaye naziphi na iinguqu kwentelekelelo ziyagqalwa xa kumiselwa iindleko eziseleyo zokuhlulwa kwamatyala. Imali yokuhlulwa kwamatyala ibalwa ngendlela yomgca ongqalileyo yokucima iindleko zempahla yexabiso engenakuchukunyiswa ngaphezu kobomi bayo obuthelekelelweyo ngolu hlobo:

I-software	: Iminyaka emi-2
------------	------------------

Imigaqo-Nkqubo Yokunik'ingxelo (iyaqhutywa)

1.6. **Impahla yexabiso elilifa**

Impahla yexabiso elilifa yimpahla enentsingiselo yenkcubeko, eyokusingqongileyo, eyembali, eyendalo, eyobunzululwazi, eyobuchwepheshe okanye eyobugcisa kwaye igcinweixesha elingaqingwanga ukuze incede izizukulwana ezikhoyo nezizayo.

Impahla yexabiso elilifa inakanwa njengempahla yexabiso kuphela xa: (a) kubonakala ukuba iziko liza kuxhamla inzuzo yoshishino okanye yokuphucuka kwenkonzo ngokunxulumene nale mpahla yexabiso, kwaye (b) iindleko okanye ixabiso elifanelekileyo lempahla yexabiso linokulinganiswa ngokuthembekileyo.

Impahla yexabiso elilifa ekulungeleyo ukuthatyathwa njengempahla yexabiso iya kulinganiswa ngeendleko zayo.

Xa impahla yexabiso elilifa ifunyenwe ngentengiselwano engeyiyo eyolwananiso, ixabiso layo liya kulinganiswa ngexabiso langomhla wokufunyanwa kwayo.

Impahla yexabiso elilifa isakuba ithatyathwe njengempahla yexabiso iya kuthi izuzwe ngexabiso layo ngaphantsi kwelahleko yokonakaliswa eyintlanganisela.

1.7. **Izintlu zempahla**

Izintlu zempahla zizuzwa ngexabiso elisezantsi lexabiso kunye nentsalela yexabiso elifumanekayo. Iindleko zezintlu zempahla ziquka iindleko zokuthenga, ezokuguqula nezinye iindleko ezidalwe kukuzisa izintlu zempahla kwindawo ezikuyo zikwimo eyiyo kwaye zimiselwa ngendlela yokukhupha ezifike mva ushiye ezifike kuqala. Izintlu zempahla eziphelelwe lixesha, ezingasafunekiyo nezihamba kancinci ziyalathwa rhoqo zize zibhalwe phantsi kwintelekelelo yentsalela yexabiso ezinokuthengiswa ngalo.

1.8. **Izixhobo zemali**

Umlinganiselo

Izixhobo zemali ziquka zilinganiswe ngeendleko eziquba iindleko zentengiselwano. Emva kokwamkelwa kwazo okokuqala ezi zixhobo zilinganiswa ngolu hlobo lulandelayo:

Urhwebo nezinye izinto ezifunyanwayo

Urhwebo nezinye izinto ezifunyanwayo ezisekwe yiPlayhouse Company zixelwe kwiindleko ngenano kokulungiselelwa kwamatyala athandabuzekayo. Izinto ezifunyanwayo ziyacinywa xa zithatyathwa njengezingenakufunyanwa kwakhona. Urhwebo nezinye izinto ezifunyanwayo kunye nokulungiselelwa kwamatyala athandabuzekayo zinikwa isaphulelo kusetyenziswa inzala yemali-mboleko xa kufanelekile.

Imali eziinkozo kunye nenye imali

Imali eziinkozo kunye nenye imali ilinganiswa ngexabiso elifanelekileyo.

Urhwebo nezinye izinto ezihlawulwayo

Urhwebo nezinye izinto ezihlawulwayo ezisekwe yiPlayhouse Company zixelwe kwiindleko. Urhwebo nezinye izinto ezihlawulwayo zinikwa isaphulelo kusetyenziswa inzala yemali-mboleko xa kufanelekile.

Iinzuzo nelahleko zomlinganiselo olandelayo

Iinzuzo nelahleko ezivela kwiinguqu zexabiso elifanelekileyo lezixhobo zemali ezingeyiyo inxalenye yobudlelwane bokuzikhusela kwilahleko ziqukwa kwintsalela yengeniso okanye yelahleko ngexesha ezivela ngalo iinguqu.

1.9. **Izicwangciso zesibonelelo zomhlala-phantsi**

Ngumgaqo-nkqubo wePlayhouse Company ukunika abasebenzi bayo izibonelelo zomhlala-phantsi. Igalelo lePlayhouse Company kwizicwangciso ezichaziweyo zokugalela nezenzuzo liba yinkcitho njengoko lisenziwa.

1.10. **Ingeniso yentengiselwano engeyiyo eyolwananiso**

Ingeniso yentengiselwano engeyiyo eyolwananiso ivela xa iziko lifumana ixabiso kwelinye iziko lingakhange liliinike ngqo ixabiso elilingana nalo lothelekelelo kulwananiso. Impahla yexabiso efunyenwe ngentengiselwano engeyiyo eyolwananiso iya kuqala ilinganiswe ngexabiso layo elifanelekileyo langomhla wokufunyanwa kwayo.

Le ngeniso iya kulinganiswa ngenani lokunyuka kwentsalela yempahla yexabiso elamkelwa liziko.

Ukungena kwezixhobo zentengiselwano engeyiyo eyolwananiso ezithatyathwa njengempahla yexabiso ziya kwamkelwa njengengeniso, ngaphandle kokuba kwamkelwe ityala kwakuloo mali ingenayo. Njengoko iziko lanelisa imfanelo eyamkelwa njengetyala ngokokungena kwezixhobo zentengiselwano engeyiyo eyolwananiso eyamkelwe njengempahla yexabiso, liya kulithoba ixabiso letyala elamkelwa njengexabiso elilingana nelo lithotyweyo.

Iziko iPlayhouse Company lityikitye isivumelwano sokusebenzisa imihlaba nezakhiwo ezithile simahla.

Imigaqo-Nkqubo Yokunik'ingxelo (iyaqhutywa)

1.11. Ingeniso

Izibonelelo

Izibonelelo ezayamene nenkcitho yokusebenza zamkelwa njengengeniso xa kucaca ukuba intlawulo yesibonelelo iza kufunyanwa kwanokuba ixabiso layo linokuthelekelelwa ngokuthembekileyo ngaphandle kokuba kukho imfanelo ekhoyo yokusebenzisa isibonelelo eso sihlawulweyo ngendlela ethile okanye sibuyiselwe emva kumboneleli. Xa kuyimfuneko ukusebenzisa isibonelelo ngendlela ethile kuphela ingekho eyokusibuyisela emva kumboneleli, akusayi kubakho mfanelo ekhoyo ke ngoko size samkelwe njengengeniso. Xa kukho imfanelo ekhoyo, isibonelelo eso samkelwa njengengeniso erhoxisiweyo de kuhlangatyezwane neemfanelo ezo ukuze samkelwe njengengeniso.

Izibonelelo ezayamene nokufunyanwa okanye ukwakhiwa kwempahla yexabiso zigqalwa njengengeniso xa kucaca ukuba intlawulo yesibonelelo iza kufunyanwa kwaye ixabiso layo linokuthelekelelwa ngokuthembekileyo, ngaphandle kwaxa kukho imfanelo ekhoyo yokusebenzisa isibonelelo eso sihlawulweyo ngendlela ethile kuphela okanye eyokusibuyisela emva kumboneleli. Xa kungeyomfuneko ukusebenzisa isibonelelo ngendlela ethile kuphela ingekho enye ehambisana nayo yokusibuyisela emva kumboneleli, akusayi kubakho mfanelo ikhoyo ke ngoko size isibonelelo samkelwe njengengeniso. Xa kukho imfanelo ekhoyo isibonelelo eso samkelwa njengengeniso erhoxisiweyo de kuhlangatyezwane neemfanelo ukuze samkelwe njengengeniso.

Ingeniso eyinzala

Ingeniso eyinzala igqalwa ngendlela yokwahlulwa kwexesha, kugqalwe imali etyalwayo kunye neqondo lenzala yexesha langoku ukusa kwelokuvuthwa kwayo, xa kucaca ukuba ingeniso leyo iza kukhulela iPlayhouse Company.

Ingeniso yendawo yokubhukishela izihlalo nengeniso enxulumene nayo

Ingeniso yendawo yokubhukishela izihlalo nengeniso enxulumene nayo yamkelwa xa kuboniswa imveliso. Amatikiti anikwa njengesipho akhutshelwe ukukhuthaza nokuthengisa imveliso awanaxabiso kwaye awaqukwa kwingeniso yendawo yokubhukishela izihlalo nengeniso enxulumene nayo.

Enye ingeniso

Enye ingeniso igqalwa xa kucaca ukuba inzuzo yexesha elizayo yoqoqosho iza kungenela iPlayhouse Company kwaye ibe iyakwazi ukulinganiswa ngokuthembekileyo.

1.12. Iinkonzo zodidi oluthile

Iinkonzo zodidi oluthile zigqalwa ngexabiso lazo elifanelekileyo xa kubalulekile kumsebenzi nakwiinjongo zokuhanjiswa kweenkonzo kwanaxa kucacile ukuba inzuzo yexesha elizayo yoqoqosho okanye ithuba lomsebenzi liza kuza kwiziko kwanokuba ixabiso lempahla yexabiso linokuthi lilinganise ngokuthembekileyo. Xa iinkonzo zodidi oluthile zingabalulekanga kumsebenzi okanye nakwiinjongo zokuhanjiswa kweenkonzo kwaye okanye zingahlangebezani nenkqubo yokwamkelwa, kubhengezwa kuphela ubume nohlobo lweenkonzo zodidi oluthile ezifunyenwe ngexesha lokunikwa kwengxelo.

1.13. Iminikelo

Iminikelo igqalwa xa iPlayhouse Company inembopheleleko yomthetho ngenxa yezehlo zangaphambili nalapho kucaca ukuba kuya kubakho ilahleko kwinzuzo yoqoqosho, nalapho kunokwenziwa uthelekelelo oluthembekileyo lwexabiso lomnikelo. Apho libaluleke khona ifuthe lesaphulelo, iminikelo iba nesaphulelo. Inani lesaphulelo elisetyenzisiweyo linani elibonisa uhlatluty lweemalike lwangoku lwexabiso lexesha lemali kwanobungozi obuhambisana netyala elo, xa kufanelekile.

1.14. Imali eziinkozo nenye imali

Ngeenjongo zengxelo yokungena kwemali, imali eziinkozo nenye imali iquka imali esesandleni, efakwe ebhankini notyalo-mali kwiimalike zemali, intsalela ye-overdraft, yonke imali esele ilungele ukusetyenziswa yiPlayhouse Company ngaphandle kwalapho kuxelwe nto yimbi.

1.15. Iqela elinonxulumano

Intengiselwano yamaqela anonxulumano kukugqithiselana ngezixhobo okanye iimfanelo phakathi kwamaqela anonxulumano nokokuba kukho iindleko ezihlawulwayo kusini na. Amaqela athatyathwa njenganxulumeneyo xa elinye iqela linako ukulawula elinye iqela okanye linefuthe elibonakalayo kwelinye iqela kwizigqibo zalo zemali okanye zokusebenza okanye xa amaziko anonxulumano ephantsi kolawulo olufanayo. Inqaku lokubhengeza linika iinkcukacha zentengiselwano yamaqela anonxulumano.

1.16. Ukuzibophelela

Ukuzibophelela kuquka iimpahla/iinkonzo ezivunyiweyo kunye okanye nezinekontrakta kodwa ekungekho nto yenziweyo kuzo ngexesha lokunika ingxelo. Ukuzibophelela akugqalwa kwingxelo yobume bezemali njengetyala okanye njengenkcitho kwingxelo yokusebenza kwemali koko kuqukwa kumanqaku okubhengeza.

1.17. Amanani entelekiso

Amanani entelekiso alungelelanisiwe ukuze angqinelane neenguqu ezinikwayo nezichazwayo, xa kufanelekile.

1.18. Ishishini eliqhubayo

Isiseko seshishini eliqhubayo samkelwe ukuze kulungise iingxelo zemali. Abaphathi abanasizathu sokukholelwa ekubeni le nkampani ayisayi kuba lishishini eliqhubayo kwixa elizayo ngenxa yesibophelelo senkxaso-mali eyifumana kwiSebe lezoBugcisa neNkcubeko, ukuxelwa ngenx' engaphambili kunye nezixhobo zemali kwakunye nemali ekhoyo.

I-Playhouse Company ifumene isabelo senkxaso-mali ngokweMTEF seminyaka emithathu ezayo kwiSebe lezoBugcisa neNkcubeko.

1.19. Ingeniso erhoxisiweyo

Amatyala aphakanyiselwa imali efunyenwe kwizibonelelo zoxhomekeko. Ingeniso evela kwezi zibonelelo iyarhoxiswa de kuhlangatyezwane neemfuno zesibonelelo. Amatyala ezibonelelo ayehla xa ingeniso erhoxisiweyo yezibonelelo iphunyezwa.

AMANQAKU EENGXELO ZEMALI ZONYAKA

2. IMPAZAMO YONYAKA OGQITHILEYO

Iziko iPlayhouse Company limilisele izinto eziyimfuneko zomhlathi wama-99 weGRAP 23, Ingeniso evela kwintengiselwano engeyiyo eyolwananiso (Irhafu neentlawulo) kunyaka-mali ka-2016. Le mhlathi ijongene nokunakanwa kweenkonzo zodidi oluthile. Kunyaka ogqithileyo, iziko iPlayhouse Company linike ingxelo ethi alikhange lizifumane iinkonzo zodidi oluthile ezicacileyo kwimisebenzi yeCompany kunye/okanye kwiinjongo zayo zokuhambisa iinkonzo eluntwini. NgeyeDwarha ngo-2016, iziko iPlayhouse Company laziswa okokuba irhafu yalo yepropati ihlawulwa liSebe leMisebenzi kaRhulumente. Iziko iPlayhouse Company lawulandelela lo mba ukuze lifumanise ixabiso lerhafu eliyihlawulelwayo. Ilungisiwe le mpazamo kwaye izichaphazele ngolu hlobo iingxelo zemali:

Ifuthe lenguqu eyenziwe yile mpazamo simi ngolu hlobo:

	EyoKwindla 2017 R	Iyaxelwa kwakhona ngeyoKwindla 2016 R
31 kweyoKwindla		
Ingxelo yokusebenza kwemali		
Ukunyuka kwengeniso		7 202 134
Ukunyuka kwenkcitho		7 202 134
Ifuthe kwingxelo yokusebenza kwemali		0
Ingxelo yobume bezemali		
Ukunyuka kwempahla yexabiso ekhoyo		7 202 134
Ukuhla kwempahla yexabiso ekhoyo		7 202 134
Ifuthe kwingxelo yobume bezemali		0
3. IMPAHLA YEXABISO		
3.1 Impahla yexabiso elilifa		
Inani eliqhubekayo	88 330 000	88 330 000
Ubukhulu bexabiso eliqhubekayo	88 330 000	88 330 000
Ilahleko yokonakaliswa eyintlanganisela	-	-
Inani eliqhubekayo ekupheleni konyaka	88 330 000	88 330 000

Impahla yexabiso elilifa iquka umhlaba nezakhiwo : Rem of portion 1 of ERF 10636 of Durban. Esi sakhwiwo saxatyiswa nguMasipala waseThekwini ngekaCanzibe ngo-2008.

Impahla yexabiso elilifa yamkelwa okokuqala ngeyoKwindla ngo-2011.

Umhlaba nezakhiwo zibhaliswe egameni leSebe leMisebenzi kaRhulumente. IPlayhouse Company iqesha umhlaba nezakhiwo kwiSebe leMisebenzi kaRhulumente.

Ngokwecandelo lama-66 loMthetho iPFMA, iPlayhouse Company ayinako ukusebenzisa ipropati engenakuchukunyiswa kuquka nempahla yexabiso elilifa njengesibambiso kwaye umhlaba nezakhiwo azixinaniswa.

Amanqaku Eengxelo Zemali Zonyaka (Iliyaqhutywa)

3.2. Ukumanywa kwexabiso eliqhubekayo lepropati, oomatshini nezixhobo

	Iinqwe- lo-mafutha	Amalungu okulungisa iinqwe- lo-mafutha	Ifanitshala yase-ofisini nokunye	Izixhobo zekhompy- utha	Izixhobo zeqonga	Izixhobo zendawo yokuse- benzela	Umsebenzi osaqhuty- wayo	Imise- benzi yobug- cisa	Impahla yexa- biso eqeshisi- weyo eyinkunzi (izixhobo zeofisi, umhlaba nezakhiwo)	Imali iyonke
	R	R	R	R	R	R	R	R	R	R

Inani eliqhubekayo ngowoku-1 kuTshazimpuzi 2015	1 585 374	27 935	3 472 215	699 607	9 237 906	237 321	3 618 873	452 049	71 145 150	90 476 430
Inani elikhulu eliqhubekayo	4 290 432	27 935	11 544 853	2 299 165	30 210 019	527 456	3 618 873	452 049	107 246 749	160 217 531
Ukuhla kwexabiso okuyintlanganisela	(2 705 058)	-	(8 072 638)	(1 599 558)	(20 972 113)	(290 135)	-	-	(36 101 599)	(69 741 101)
Izongezo	395 023	-	150 910	133 103	650 729	6 430	5 219 501	-	-	6 555 696
Ulungelelwaniso lwexabiso elifanelekileyo	-	-	-	-	-	-	-	-	-	-
Iminikelo	-	-	612 190	-	1 222 590	-	(5 619 623)	-	3 784 843	-
Ukuhla kwexabiso	(722 879)	-	(1 237 470)	(331 226)	(4 701 476)	(100 006)	-	-	(10 956 006)	(18 049 063)
Ukubuyiselwa kokuhla kwexabiso	660 773	-	136 241	221 627	4 432 555	3 877	-	-	179 580	5 634 653
Ukulahlwa	-	-	-	-	-	-	-	-	-	-
Iindleko	-	-	-	-	-	-	-	-	-	-
Ukuhla kwexabiso okuyintlanganisela	-	-	-	-	-	-	-	-	-	-
Inani eliqhubekayo ngowama-31 kweyoKwindla 2016	1 918 291	27 935	3 134 086	723 111	10 842 304	147 622	3 218 751	452 049	64 153 567	84 617 716
Inani elikhulu eliqhubekayo	4 685 455	27 935	12 307 953	2 432 268	32 083 338	533 886	3 218 751	452 049	111 031 592	166 773 227
Ukuhla kwexabiso okuyintlanganisela	(2 767 164)	-	(9 173 867)	(1 709 157)	(21 241 034)	(386 264)	-	-	(46 878 025)	(82 155 511)
Izongezo	-	-	104 251	320 052	77 123	-	32 324 858	-	16 731	32 843 015
Ulungelelwaniso lwexabiso elifanelekileyo	-	-	-	-	-	-	-	-	-	-
Iminikelo	-	-	168 474	160 626	20 953 986	-	(33 062 663)	-	11 779 577	-
Ukuhla kwexabiso	(577 025)	-	(1 360 616)	(339 543)	(6 818 803)	(100 905)	-	-	(11 404 288)	(20 601 180)
Ukubuyiselwa kokuhla kwexabiso	208 526	-	382 171	121 587	1 376 558	17 126	-	-	3 799 007	5 904 975
Ukulahlwa	-	(877)	(3 469)	(528)	(10 792)	(4)	-	(1 075)	-	(16 745)
Iindleko	-	(877)	(106 314)	(183 509)	(535 363)	(12 349)	-	(1 075)	-	(839 487)
Ukuhla kwexabiso okuyintlanganisela	-	-	102 845	182 981	524 571	12 345	-	-	-	822 742
Inani eliqhubekayo ngowama-31 kweyoKwindla 2016	1 549 792	27 058	2 424 897	985 305	26 420 376	63 839	2 480 946	450 974	68 344 594	102 747 781
Inani elikhulu eliqhubekayo	4 685 455	27 058	12 474 364	2 729 437	52 579 084	521 537	2 480 946	450 974	122 827 900	198 776 755
Ukuhla kwexabiso okuyintlanganisela	(3 135 663)	-	(10 049 467)	(1 744 132)	(26 158 708)	(457 698)	-	-	(54 483 306)	(96 028 974)

Umhlaba nezakhiwo ziquka:

1. Rem of Portion 1 of ERF 10636 of Durban
2. Rem of Portion 3 of ERF 615 of Brickfield
3. Portion 3 of ERF 10635 of Durban

Umhlaba nezakhiwo zibhaliswe egameni leSebe leMisebenzi kaRhulumente. IPlayhouse Company iqesha umhlaba nezakhiwo kwiSebe leMisebenzi kaRhulumente.

Ixabiso lobomi, inkqubo yokuhla kwexabiso, nexabiso lentsalela yempahla yexabiso liyavavanywa rhoqo ngonyaka kwaye kwenziwa ulungelelwaniso xa kuyimfuneko oko.

Amanqaku Eengxelo Zemali Zonyaka (Iiyaqhutywa)

3.3. Impahla yexabiso engenakuchukunyiswa

Inani eliqhubekayo ngowoku-1 kuTshazimpuzi 205

Inani elikhulu eliqhubekayo	
Ukuhlawulwa kwamatyala okuyintlanganisela	
Izongezo	
Ukuhlawulwa kwamatyala	
Ukubuyiselwa kokuhlululwa kwamatyala	

Ukulahlwa

lindleko	
Ukuhlawulwa kwamatyala okuyintlanganisela	

Inani eliqhubekayo ngowama-31 kweyoKwindla 2016

Inani elikhulu eliqhubekayo	
Ukuhlawulwa kwamatyala okuyintlanganisela	
Izongezo	
Ukuhlawulwa kwamatyala	
Ukubuyiselwa kokuhlululwa kwamatyala	

Ukulahlwa

lindleko	
Ukuhlawulwa kwamatyala okuyintlanganisela	

Inani eliqhubekayo ngowama-31 kweyoKwindla 2017

Inani elikhulu eliqhubekayo	
Ukuhlawulwa kwamatyala okuyintlanganisela	
Ukuhlawulwa kwamatyala kuqukwe kunye nokuhla kwexabiso	

Isoftware	Imali iyonke
R	R
100 669	100 669
557 926	557 926
(457 257)	(457 257)
18 679	18 679
(70 079)	(70 079)
-	-
-	-
-	-
49 269	49 269
576 605	576 605
(527 336)	(527 336)
819 480	819 480
(198 229)	(198 229)
128 557	128 557
(1)	(1)
(3 795)	(3 795)
3 794	3 794
799 076	799 076
1 392 290	1 392 290
(593 214)	(593 214)

4. Izintlu zempahla

Ukutya	
Indawo yokusebenzela	
Impahla yokunxiba	
Iindawo zokugcina jikelele	

5. Urhwebo nezinye izinto ezifunyanwayo

Izinto zorhwebo ezifunyanwayo	
Abasebenzi abatyalayo	
Ezinye izinto ezifunyanwayo	
Nganeno: Ukuphelisa amatyala	

5.1. Intshukumo kulungiselelo lokonakaliswa kwezinto zorhwebo ezifunyanwayo

Imali eseleyo ngowoku-1 kuTshazimpuzi	
Ulungiselelo lokonakaliswa kwezinto ezifunyanwayo	
Izinto ezifunyanwayo eziciniweyo kulo nyaka njengezingaqokelelekiyo	
Imali engasebenzanga ebuyiselwa emva	
Ukuconjululwa kwesaphulelo	
Imali eseleyo ngowama-31 kweyoKwindla	

EyoKwindla	Iyaxelwa kwakhona ngeyoKwindla
2017	2016
R	R
95 540	81 465
239 068	220 885
94 284	96 313
107 985	111 047
536 877	509 710
266 222	290 268
5 833	5 833
1 216 732	1 879 190
1 488 787	2 175 291
(122 522)	(213 369)
1 366 265	1 961 922
213 369	500 064
(90 847)	(286 695)
-	-
-	-
-	-
122 522	213 369

Amanqaku Eengxelo Zemali Zonyaka (liyaqhutywa)

	March 2017	Restated March 2016
	R	R
6. Imali eziinkozo nenye imali ekupheleni konyaka		
Imali eziinkozo efumaneka msinyane	28 137 720	12 057 264
Utyalo-mali - iidiphozithi eziqingqiweyo	68 599 646	98 582 883
Imali eziinkozo efumaneka kwiintsuku ezingama-30	-	33 152 521
Imali eziinkozo efumaneka kwiintsuku ezingama-60	21 500 000	24 894 000
Imali eziinkozo efumaneka kwiintsuku ezingama-90	47 099 646	40 536 362
	<u>96 737 366</u>	<u>110 640 147</u>
Imali ebalelwa kuma-R 277 816 nama-R 30 360 ibanjiswa njengokhuseleko kwiziqinisekiso ezikhutshwe nguFNB egameni lePlayhouse Company ezikhuphela uMasipala waseThekwini kunye nePostmaster. Ezi ziqinisekiso ziza kuphelelwa lixesha ngomhla wama-31 kweyoMnga 2025 kwaye azisayi kuvuselelwa.		
7. Urhwebo nezinye izinto ezihlawulwayo		
Izinto zorhwebo ezihlawulwayo	1 907 920	1 805 160
Ezinye izinto ezihlawulwayo nezongezelelekileyo	3 129 570	2 773 473
Umvuzo wekhefu owongezelelekileyo	2 717 182	2 062 390
Ibhonasi eyongezelelekileyo	829 723	762 504
	<u>8 584 395</u>	<u>7 403 527</u>
8. Umvuzo orhoxisiweyo		
Isibonelelo esifunyenwe ngaphambi kwexesha	15 163 799	24 505 340
Isebe lezoBugcisa neNkcubeko likaZwelonke	14 413 799	23 755 340
uMasipala waseThekwini	750 000	750 000
	<u>15 163 799</u>	<u>24 505 340</u>
9. Izibonelelo		
Isebe lezoBugcisa neNkcubeko likaZwelonke - (DAC)	43 815 000	41 926 000
Isibonelelo senkcitho eyodwa yenkunzi - (DAC)	20 453 947	23 015 084
Isebe lezoBugcisa neNkcubeko laseKZN	7 787 000	7 787 000
UMasipala waseThekwini	3 000 000	3 000 000
Imali iyonke	<u>75 055 947</u>	<u>75 728 084</u>

Isibonelelo soxhomekeko

Isebe lezoBugcisa neNkcubeko likaZwelonke

IPlayhouse Company ifumana inkxaso-mali kwiSebe likaZwelonke lezoBugcisa neNkcubeko.

Ngokomhlathi wama-53(3) woMthetho woLawulo lweMali kaRhulumente, 1999, iziko likarhulumente alikwazi ukuqingqa imali yentsilelo kwaye alikwazi ukwenza intsalela ngaphandle kokuba lifumene imvume ebhaliweyo kuNondyebo kaZwelonke.

Izibonelelo ezingasetyenziswanga kufuneka ziphindiswe kuNondyebo kaZwelonke ngaphandle kokuba kufunyenwe imvume ebhaliweyo.

IPlayhouse Company ifumene imvume ebhaliweyo kuNondyebo kaZwelonke yokuyigcina intsalela eyenzileyo.

Amanqaku Eengxelo Zemali Zonyaka (liyaqhutywa)

Isibonelelo soxhomekeko

Isebe lezoBugcisa neNkcubeko laKwaZulu-Natala

iPlayhouse Company ifumana inkxaso-mali kwiSebe lezoBugcisa neNkcubeko laKwaZulu-Natala.

Njengeziko lenkcubeko elibhengeziweyo, iPlayhouse Company ineenjongo evumelene ngazo neli Sebe:

1. Ukuthobela isibhengezo sokokuba iPlayhouse Company ineenkqubo zempatho nolawulo lwemali ezisebenzayo, ezifanelekileyo nezingafihlisiyo ukuze ikwazi ukulawula intlawulo yesibonelelo esivela kwiSebe,
2. Ukusebenzisa le mali ngokungqinelana nescwangciso soshishino,
3. Ukusebenzisa le mali ngokungqinelana neenjongo ezibalulwe kwizivumelwano yaye ingasetyenziswa kwezinye iinjongo ezingabalulwanga kwesi sivumelwano.
4. Ukusebenzisa le mali phantsi kwayo nayiphi na imiyalelo ebhaliweyo ekhutshwe yiNtloko yeSebe.
5. Ukungenisa kwiSebe iingxelo zekota ngexesha okanye ngaphambi kwexesha ekuvunyelwene ngalo.
- 5.1 Ukuqinisekisa ukuba iingxelo zekota zinika iinkcukacha ezinabileyo ngempumelelo xa ithelekiswa neenjongo ezibalulwe kwiscwangciso soshishino.
- 5.2 Ukuqinisekisa ukuba iingxelo zekota ziqulethe ingxelo yenkcitho ecacisa ngendlela esetyenziswe ngayo imali ithelekiswa nescwangciso soshishino
- 5.3 Ukuqinisekisa ukuba ingxelo yekota iqulethe zonke ezinye iinkcukacha okanye amaxwebhu anokufunwa liSebe.
6. Ukungenisa kwiSebe ingxelo yokuqukumbela unyaka-mali ka-2015/2016 ngaphambi komhla wama-30 kuTshazimpuzi 2016.
7. Ukunika iSebe ingxelo eneenkcukacha zemali efunwa liSebe ukuze likwazi ukuthobela ukunika kwalo ingxelo okusemthethweni kwanokulincediswa ukuze likwazi ukunika ingxelo ngokunikela kwalo imali okubonakalayo kwiincwadi zalo zokunik'ingxelo.
8. Ukunika ingxelo ngenzala engena rhoqo ngenyanga kwaye iziko liyavuma ukuba iSebe linelungelo lokumisela okokuba isetyenziswe njani na inzala leyo.
9. Ukugcina inkqubo yokufumana nokunika iinkonzo efanelekileyo, enobulungisa, engafihlisiyo, evumela ukhuphiswano neyonga imali.
10. Ukwazisa iSebe ngokukhawuleza ngembalelwano xa kukho nakuphi na ukusilela ekufezekiseni iinjongo okanye iimfanelo zeziko.
- 11.1 Ukuqinisekisa ukuba lo gama isebenzisa isivumelwano sayo sentsebenziswano isenza nemisebenzi yayo iPlayhouse Company ayisophuli nasiphi na esinye isivumelwano eyinxalenye yaso.
- 11.2 Ukuqinisekisa ukuba nasiphi na esinye isivumelwano iPlayhouse Company enokuthi ingene kuso nabani na ukuze izalisekise iimfanelo zayo kwiSebe, asisayi kuphikisana okanye sidale imbambano kumagatya esivumelwano sentsebenziswano neSebe.

Amanqaku Eengxelo Zemali Zonyaka (Iiyaqhutywa)

Isibonelelo soxhomekeko

uMasipala waseThekwini

Umasipala waseThekwini ungene kwisivumelwano nePlayhouse Company sokunika inkxaso yemali.

Umasipala waseThekwini kunye nePlayhouse Company bangene kwisivumelwano sentsebenziswano ngeyoMqungu 2015 ukuya kuthi ga kunyaka ophela ngomhla wama-31 kweyoKwindla 2017.

Le nkxaso-mali inikwa phantsi kwemiqathango yokokuba iPlayhouse Company kufuneka iphumeze iimfanelo zayo ezithile ezinxulumene nomsebenzi.

Nazi ezi mfanelo zibalulwe apha ngezantsi:

1. IPlayhouse Company iza kusebenzisa le mali ukufezekisa injongo yayo engundoqo njengeziko leNkcubeko.
2. IPlayhouse Company iza kuzibophelela ukufaka igxalaba kanobom ekuphuculeni ixabiso lobomi bamagcisa akuMasipala waseThekwini ngokwenza oku kulandelayo:
 - 2.1. Ukuvelisa, ukuzisa nokumilisela isicwangciso sayo sezobugcisa ukuze ikhuthaze intatho-nxaxheba yabantu abahlala kuMasipala waseThekwini.
 - 2.2. Ukusebenzisa ubugcisa nenkcubeko ukuphucula uphuhliso lwamagcisa engingqi ngokwezozoqosho nangokwentlalo-ntle.
 - 2.3. Ukuqinisekisa ukuba iPlayhouse Company iyabonakala kwaye iyafikeleleka kubahlali abohlukahlukeneyo baseThekwini nakuloo maziko obugcisa akhetha ukusebenzisana nePlayhouse.
 - 2.4. Ukuncedisa nokudlala indima yokukhuthaza nebalulekileyo kuphuhliso loqoqosho nokhenketho.
 - 2.5. Ukuqinisekisa ukukhula kwezobugcisa ePlayhouse Company, uzinzo lwasezimalini nokusebenza ngokugqwesileyo kuyo yonke imisebenzi yayo.
3. Umlawuli wezoBugcisa neNgqonyela yePlayhouse Company bekunye noMphathi weSixeko okanye icandelo loLawulo loMasipala waseThekwini baya kuthi, ngaphaya kophononongo lonyaka babe nophononongo olusesikweni lokusebenza kwePlayhouse Company ngokwesi sivumelwano.
4. Uphononongo lwesibonelelo sonyaka luza kwenziwa ngomhla we-15 kweyoMnga kwaye luza kugxininisa ekufezekiseni kwePlayhouse Company ezi njongo zilandelayo, kodwa kungaphelanga kuzo kunye nezinye iimfanelo:
 - 4.1. Ukufumana inkxaso-mali kweminye imithombo kuquka nakwamanye amacandelo karhulumente.
 - 4.2. Umyinge weendleko zabasebenzi zolawulo akufuneki ugqithe kumyinge wama-30% wesibonelelo sisonke.
 - 4.3. Ukunika ubungqina bokokuba umyinge wama-70% esibonelelo sisonke usetyenziswe ngokukodwa kwisicwangciso sobugcisa.
 - 4.4. Ukubonisa ukuba iinkqubo zokufikelela ebantwini ziza kwanda xa kuthelekiswa neminyaka egqithileyo kwakunye nokunika iinkcukachamanani ezifanelekileyo kunye neendlela zokuqinisekisa ezibonisa iinkqubo ezintsha zonyaka zokufikelela ebantwini.
 - 4.5. IPlayhouse Company iza kwenza iindawo nezixhobo zayo zifumaneka simahla kubantu abafake isicelo bethunyelwa nguMasipala waseThekwini (zibe li-10 ubuninzi ngonyaka-mali weBhunga), kodwa xa iPlayhouse Company ingazi kungena zindlekweni ngokunikela ngezo ndawo nezixhobo.
 - 4.6. IPlayhouse Company iza kwenza iindawo zayo zemiboniso nezixhobo zifikeleleke ngolu hlobo:
 - 4.6.1 Kufuneka kwenziwe isicelo esibhaliweyo sokufikelela kwizixhobo kwisithuba seenyanga ezi-6 ngaphambi komsitho.
 - 4.6.2 IPlayhouse Company iza kunika uMasipala waseThekwini omnye umhla xa umhla oceliweyo ungafumaneki.
 - 4.6.3 Abafaki-sicelo abathunyelwe nguMasipala baza kusebenzisa izixhobo phantsi kwemiqathango efanayo naleyo yabanye abaxumi basePlayhouse Company, nto nje bona abazihlawuli iindleko zokuqesha.
 - 4.7. IPlayhouse Company iza kubulela uMasipala waseThekwini ngokuthi phakathi kwezinye izinto imquke kuphawu lwayo nakuyo yonke impahla yayo yentengiso, ingakumbi kwiinkqubo zayo zangaphakathi, iiprojekthi nemisitho.
 - 4.8. IPlayhouse Company iza kungenisa ikopi yengxelo yayo yekota kuMasipala waseThekwini.
 - 4.9. IPlayhouse Company iza kunika uMasipala ikopi yeengxelo zonyaka zemali eziphicothiweyo isakuba ifumaneka kodwa phambi komhla we-15 kweyeThupha rhoqo ngonyaka.
 - 4.10. IPlayhouse Company iza kunika uMasipala ikopi yayo yengxelo yonyaka isakuba ifumaneka kodwa phambi komhla we-15 kweyeThupha rhoqo ngonyaka.

Amanqaku Eengxelo Zemali Zonyaka (Iiyaqhutywa)

	EyoKwindla 2017 R	Iyaxelwa kwakhona ngeyoKwindla 2016 R
10. Enye ingeniso yokusebenza		
Ingeniso evela kulwananiso	10 651 556	5 359 495
Ukuqeshisa ngeendawo zemiboniso, impahla yemiboniso, namaqonga ajikelezayo	2 575 280	2 552 597
Ingeniso yeofisi yokubhukishela izihlalo	5 948 878	1 395 113
Irenti efunyenweyo	569 075	412 501
Ibhari nezinye iintengiso	609 573	373 915
Imisitho	238 132	229 008
Ingeniso yendawo yokubhukishela izihlalo – iimveliso zangaphandle	475 754	188 207
Ingeniso yamathuba athile - eyolawulo, ingeniso yentengiso yamatikiti kunye nokuxatyiswa kwempahla yexabiso	234 864	208 154
Ingeniso evela kwintengiselwano engeyiyo eyolwananiso	10 196 492	8 084 232
Iminikelo nenkxaso-mali (iimveliso)	2 499 103	882 098
Iinkonzo zodidi oluthile	7 697 389	7 202 134
Ingeniso iyonke	20 848 048	13 443 727
11. Iindleko zokuvelisa		
Inkcitho engqalene ngqo nemveliso	16 539 383	12 554 748
Iindleko zokuqeshisa ngaphandle	33 034	4 842
Iimveliso namatheko	16 413 317	12 475 504
Iqonga elijikelezayo	93 032	74 402
Iindleko ezingangqalananga ngqo nokuvelisa	123 559	116 344
Imali iyonke	16 662 942	12 671 092
12. Inkcitho yeenkonzo zoemveliso nezobuchwepheshe		
Iinkonzo zobuchwepheshe	5 000 576	4 401 456
Imali iyonke	5 000 576	4 401 456
13. Iindleko zokulungisa nokugcina		
I-airconditioning	357 511	227 268
Izakhiwo	316 140	877 838
Izinto zombane wangaphakathi	275 772	184 021
Izixhobo zokucim'umlilo	118 545	32 489
Iikhethshi	464 035	394 507
Oomatshini	27 984	81 400
Iinqwelo-mafutha	232 784	270 970
Izixhobo zeqonga kunye neepiyano	176 075	216 435
Iindleko gabalala	158 543	178 394
	2 127 389	2 463 322

Amanqaku Eengxelo Zemali Zonyaka (Iiyaqhutywa)

	Notes	March	Restated March
		2017	2016
		R	R
14. Enye inkcitho yokusebenza			
Ezothutho		199 935	129 598
Ilahleko kwintengiso yempahla yexabiso		15 871	-
Ukuqeshisa ngezinto zokuhombisa		-	7 426
Impahla enxitywayo		28 089	16 472
Inkcitho gabalala - abacebisi, i-inshorensi neminxeba		724 552	792 917
Iindleko zeentengiso - ibhari nezinye		320 055	218 091
Iyonke		1 288 502	1 164 504
15. Imivuzo			
Imivuzo		22 732 594	20 799 969
Eyenzelwe ixesha elithile		2 502 543	2 338 052
Isibonelelo somhlala-phantsi		3 191 784	2 951 994
Inkxaso-mali yezonyango		730 068	702 905
i-Uif		175 245	168 553
Ibhonasi		1 854 468	1 728 682
Ixesha elongezelelweyo		240 733	228 706
Ikhofu		792 635	73 788
Ukuhlalela iindibano zeBhunga		134 321	251 780
Isibonelelo sezindlu		863 000	816 687
Amawonga enkonzo yexesha elide		56 160	59 940
Imali iyonke		33 273 551	30 121 056
16. Intsalela evela kwimisebenzi			
Intsalela evela kwimisebenzi ifunyenwe emva kokuthi kugqalwe:			
Inkcitho			
Umvuzo womphicothi-zincwadi:		866 368	552 215
Ukuhla kwexabiso lepropati, oomatshini nezixhobo:		14 696 205	12 414 410
linqwelo-mafutha		577 025	722 879
Ifanitshala yeofisi nezinye izixhobo		1 360 616	1 237 470
Izixhobo zeekhompyutha		339 543	331 226
Izixhobo zeqonga		6 818 803	4 701 476
Izixhobo zendawo yokusebenzela		100 905	100 006
Impahla yexabiso eqeshisiweyo		11 404 288	10 956 006
		20 601 180	18 049 063
Ukubuyisela ixabiso elihlileyo		(5 904 975)	(5 634 653)
Ukuhlawula amatyala		69 672	70 079
Impahla yexabiso engenakuchukunyiswa		198 229	70 079
Ukubuyisel'ixabiso ngokuhlawula amatyala		(128 557)	-
Imivuzo - abaphathi abaphezulu kunye nebhunga	22	44 40 927	4 297 054
Iindleko zabasebenzi		28 832 624	25 824 001
Iinkonzo zobuchule		695 053	450 753
Imirhumo yophicotho-zincwadi lwangaphakathi		672 823	388 794
Imirhumo yabacebisi		22 230	61 959

Amanqaku Eengxelo Zemali Zonyaka (liyaqhutywa)

EyoKwindla	Iyaxelwa kwakhona ngeyoKwindla
2017	2016
R	R

17. Intsalela yonyaka

Intsalela yonyaka ka-2017 no-2016 inika ingqwalasela ukwamkelwa kwengeniso eyinkunzi ngokweGRAP 23 - Ukunikela nengeniso yerhafu engeyiyo eyolwananiso (kusebenza imithetho-siseko yomgaqo-siseko).

18. Ukumanywa kwengxelo yeenguqu kwimpahla yexabiso eyintsalela

Imali eseleyo ngowama-31 ngeyoKwindla

266 769 171

254 199 897

Yakhiwe ngolu hlobo lulandelayo:

GRAP 23 Isibonelelo sikarhulumente sokusebenzisa umhlaba nezakhiwo simahla samkelwe

141 900 000

141 900 000

linguqu kwintsalela yempahla yexabiso enxulumene nemisebenzi

124 869 171

112 299 897

19. Ukumanywa kwemali engenisiweyo

Imali engenisiwe yimisebenzi

Intsalela yonyaka

12 569 275

15 798 383

Ilungelelaniselwe:

Ukuhla kwexabiso, ukuhlawulwa kwamatyala nokonakaliswa

14 765 879

12 484 488

Ilahleko yokulahlwa kwepropati, oomatshini nezixhobo

877

-

Inzala efunyenweyo

(7 805 090)

(7 256 621)

Imali engenayo yokusebenza ngaphambi kweenguqu zenzala esebenzayo

19 530 940

21 026 250

linguqu zenzala esebenzayo

(7 592 184)

(15 841 569)

(Ukunyuka) kwezintlu zempahla

(27 168)

(28 689)

Ukuhla (Ukunyuka) kweekhawunti ezifunyanwayo

595 657

(593 621)

Ukunyuka kweekhawunti ezihlawulwayo

1 180 868

1 089 825

(Ukuhla) komvuzo orhoxisiweyo

(9 341 541)

(16 309 084)

Imali eziinkonzo efunyenwe kwimisebenzi

11 938 756

5 184 681

Amanqaku Eengxelo Zemali Zonyaka (Iiyaqhutywa)

EyoKwindla	Iyaxelwa kwakhona ngeyoKwindla
2017	2016
R	R

20. Izixhobo zemali

Inkcazelo emfutshane

Ngokusebenzisa izixhobo zemali iPlayhouse Company iba sesichengeni sobu bungozi bulandelayo.

- Ubungozi bamatyala
- Ubungozi bokutshona
- *Ubungozi boshishino*
- Ubungozi benzala yemali-mboleko

Eli nqaku linika iinkcukacha zobhenco lwePlayhouse Company kubungozi ngabunye koku budweliswe apha ngasentla, iinjongo zePlayhouse Company, imigaqo-nkqubo neenkqubo zayo zokulinganisa nokulawula ubungozi kwakunye nendlela eyilawula ngayo imali yayo eyinkunzi iPlayhouse Company. Kwezi ngxelo zemali kuqukwe nobunye ubuninzi bokubhengezwa.

NgokoMmiselo kaNondyabo kaZwelonke wama-27.2.1, okhutshwe ngokuyalela kwePFMA kufuneka igunya elinika ingxelo (iBhunga) liqinisekise ukuba kwenziwa uvavanyo lobungozi rhoqo ukuze buhle bubonwe ubungozi obuvelayo kwiziko. IBhunga lisungule iKomiti yoPhicotho-zincwadi evelisa ize yongamele imigaqo-nkqubo yePlayhouse Company yolawulo lobungozi.

Imigaqo-nkqubo yePlayhouse Company yolawulo lobungozi isungulwe ukuze yalathe ize icalule ubungozi ejamelene nabo iPlayhouse Company, ukumisa imida nolawulo olufanelekileyo kunye nokongamela ubungozi nokuthobela imida. Imigaqo-nkqubo neenkqubo zolawulo lobungozi ziyaphononongwa rhoqo ukuze zibonise iinguqu kwiimeko zoshishino nakwimisebenzi yePlayhouse Company. IPlayhouse Company izimisele ukuvelisa imeko yolawulo enengqeqesho neyakhayo eyenza bonke abasebenzi baluqonde uxanduva nemisebenzi yabo yaye ikwenza oku ngokusebenzisa iinkqubo nemigangatho yayo yoqeqesho nolawulo.

IKomiti yophicotho-zincwadi ihlola indlela abaphathi abakongamela ngayo ukuthobela imigaqo-nkqubo neenkqubo zolawulo lobungozi zePlayhouse Company ize iphonononge inkqubo-sikhokelo yolawulo lobungozi ngokunxulumene nobungozi ejamelene nabo iPlayhouse Company. IKomiti yoPhicotho-zincwadi incediswa luPhicotho-zincwadi lwaNgaphakathi kuxanduva lwayo lokongamela imisebenzi. Uphicotho-zincwadi lwangaphakathi lwenza uphononongo olwenziwa rhoqo nolo lulungiselelwe injongo ethile lolawulo neenkqubo zobungozi zize iziphumo zixelwe kwiKomiti yoPhicotho-zincwadi.

Ubungozi bamatyala

Ubungozi bamatyala bubungozi belahleko yemali kwiPlayhouse Company obuvela xa umthengi okanye ilungu elingugxa welinye besilela ukuhlangabezana neemfaneko zabo zesivumelwano kuze oko kuvele kwizinto zePlayhouse Company ezifunyanwa kubaxumi.

Inzuzo yempahla elixabiso eyimali inika ubhenco kubungozi bamatyala olukhulu. Ubukhulu bobhenco kubungozi bamatyala ngowama-31 kweyoKwindla bebumi ngolu hlobo:

Urhwebo nezinye izinto ezifunyanwayo (inqaku 5)	1 366 265	1 961 922
---	-----------	-----------

Urhwebo nezinye izinto ezifunyanwayo

Ubhenco lwePlayhouse Company kubungozi bamatyala luphenjelelwa kakhulu ziimpawu zomthengi ngamnye. Uluhlu lwabathengi lwePlayhouse Company kuquka nobungozi bokusilela ukuhlawulwa kwamatyala kwishishini kunye nelizwe abasebenza kulo abathengi, zizinto ezi ezingenafuthe lingako kubungozi bamatyala.

Ubuninzi bezinye izinto ezifunyanwayo nenzuzo zinxulumene nengeniso yenzala efunyanwa kumaziko emali ngemali etyalwe kwiidiphozithi eziqingqiweyo.

Iimali ezityalwa ngokorhwebo ziquka imali engekahlawulwa yezi nkonzo zilandelayo:

Ukuqeshwa kwelori - iidiphozithi okanye iinombolo zeodolo zifunyanwa ngaphambi kokuba ilori iqeshiselwe imisitho yenkcubeko.

Irenti - lidiphozithi zabantu abaqeshileyo ziyagcinwa.

Ukuqeshiswa kwendawo yokubambela imisitho - lidiphozithi zifunyanwa kwantlandlolo.

Impahla yemiboniso/impahla yeqonga/ukuqeshisa ngeewigi - imirhumo ifunyanwa ngaphambi kokuqeshiswa kwezinto.

Intengiso yamatikiti - imali ifunyanwa kwintengiso yamatikiti emnyango okanye eComputicket.

Umgaqo-nkqubo wePlayhouse Company uqwalasela ubhenco lwayo kubungozi bamatyala rhoqo ngenyanga. Xa kuphela unyaka ubukhulu bobhenco kubungozi bamatyala buxelwa linani eliyinzuzo lempahla yexabiso eyimali nganye.

Amanqaku Eengxelo Zemali Zonyaka (Iiyaqhutywa)

EyoKwindla	Iyaxelwa kwakhona ngeyoKwindla
2016	2015
R	R

20. Izixhobo zemali (Iiyaqhutywa)

Urhwebo nezinye izinto ezifunyanwayo (Iiyaqhutywa)

Ukubalwa kokuxatyiswa ngobulungisa korhwebo nezinye izinto ezifunyanwayo kuyenziwa kodwa ulungelelwaniso alwenziwa njengoko inani lolungelelwaniso lingaphatheki.

Ingalulo yorhwebo nezinye izinto ezifunyanwayo ngenjongo yokunika ingxelo:

Iintsuku ezingama-90 nangaphezulu	189 934	205 106
Iintsuku ezingama-30	8 781	12 417
Ezikhoyo	1 167 551	1 744 399
	<u>1 366 266</u>	<u>1 961 922</u>

Utyalo-mali

IPlayhouse Company inciphisa ubhenco lwayo kubungozi bamatyala ngokuthi ityale imali kuphela kwizinto ezinokuthengiswa lula nakwiibhanka nakumaziko emali avunyiweyo.

Iziqinisekiso

Umqaqo-nkqubo wePlayhouse Company kukunika iziqinisekiso zemali kwiinkonzo ezixeliweyo kuphela.

Iziqinisekiso ezikhutshwe ngowama-31 kweyoKwindla 2016 zimi ngolu hlobo:

Iinkonzo zikaMasipala waseThekwini - R 277 816

Iinkonzo zomphathi weofisi yeposi - R 30 360

Ezi ziqinisekiso ziza kuphelelwa ngomhla wama-31 kweyoMnga 2025 kwaye azisayi kuvuselelwa.

Ubungozi bokutshona

Ubungozi bokutshona bubungozi obuchaza ukuba iPlayhouse Company ayinakukwazi ukuhlawula iimfanelo zayo zemali ngexesha elifanelekileyo. Indlela iPlayhouse Company ekuthintela ngayo ukutshona kukuqinisekisa ukuba isoloko inemali eyaneleyo ukuze ikwazi ukuhlawula amatyala ayo ngexesha phantsi kweemeko zesiqhelo nezoxinzelelo ngaphandle kokwenza ilahleko engeyomfuneko okanye ukubeka esichengeni isidima sePlayhouse Company.

IPlayhouse Company ihlawula amatyala ayo rhoqo ngeveki. Lwenziwa kwantlandlolo uvavanyo lwamatyala afuna ukuhlawulwa. Kuye kufakwe imali kwiakhawunti yebhanka ukuze ihlawule amatyala rhoqo ngeveki. Intsalela ityalwa inyanga nenyanga kutyalo-mali olunika inzala encumisayo.

Kungumqaqo-nkqubo wePlayhouse Company uhambisana noweSebe lezoBugcisa neNkcubeko likaZwelonke ukungabolekisi ngemali. Ngoko ke akukho matyala avulwayo kweli ziko.

Imali eziinkozo ekhoyo ngomhla wama-31 kweyoKwindla ngo-2017 ibingama-R96 737 366 (2016 - R110 640 147).

Ubungozi boshishino

Ubungozi boshishino bubungozi obuguqulwa ngamaxabiso orhwebo afana nokokuba inzala yemali-mboleko iyayichaphazela ingeniso yePlayhouse Company. Injongo yolawulo lobungozi boshishino kukulawula ubhenco kubungozi boshishino kwimida eyamkelekileyo lo gama kusonyuswa ingeniso.

Umqaqo-nkqubo wePlayhouse Company uhambisana noweSebe lezoBugcisa neNkcubeko likaZwelonke kukutyala imali eziinkozo eyintsalela. Inzala encumisayo namaxesha okutyala imali ayafumaneka kwiibhanka eziliqela. Kuye kwenziwe isiphakamiso sokwenza oku size sivunywe ngabaphathi abayintloko.

Ubungozi bamandla emali

IPlayhouse Company ayinaxulumano nentengiselwano yeemali zangaphandle ngoko ke ayinabhenco kobu bungozi.

Ubungozi benzala yemali-mboleko

Kungumqaqo-nkqubo wePlayhouse Company uhambisana neSebe lezoBugcisa neNkcubeko likaZwelonke ukungabolekisi ngemali. Ngoko ke akukho matyala avulwayo kweli ziko. Akukho bungozi bunxulumene neenguqu kwinzala yemali-mboleko kweli ziko.

Amanqaku Eengxelo Zemali Zonyaka (Iiyaqhutywa)

20. Izixhobo zemali (Iiyaqhutywa)

Ubungozi benzala yemali-mboleko (Iiyaqhutywa)

Umgqo-nkqubo wePlayhouse Company ohambisana neSebe lezoBugcisa neNkcubeko likaZwelonke kukutyalala imali eziinkozo eyintsalela. Inzala encumisayo namaxesha okutyalala imali ayafumaneka kwiibhanka eziliqela. Kuye kwenziwe isiphakamiso soku size sivunywe ngabaphathi abayintloko.

Iprofayili

	2017		2016	
	Inzala yemali-mboleko %	Inani lenzuzo	Inzala yemali-mboleko %	Inani lenzuzo
Isixhobo senzala eguquguqukayo				
FNB - iintsuku ezili-120		-		-
Investec - iintsuku ezili-120 eziqingqiweyo	7,85	18 243 834	7,25	31 546 480
Nedbank - iintsuku ezingama-60 eziqingqiweyo		-	7,10	2 500 000,00
Nedbank - iintsuku ezili-120 eziqingqiweyo	7,90	19 072 768	6,90	13 935 379
ABSA - iintsuku ezili-120 eziqingqiweyo		-	7,11	16 496 240
Standard Bank - iintsuku ezili-120	7,94	31 283 044	7,47	34 104 784
		68 599 646		98 582 883

Ngomhla wama-31 kweyoKwindla 2016, ukuba ngaba inzala yemali-mboleko ibimi kumanqaku ali-100 ngaphantsi okanye ngaphezulu kwanazo zonke ezinye izinto eziguquguqukayo zimi ndawonye ingeniso ibiza kwanda okanye inciphe nge-R 685 996.

Ngomhla wama-31 kweyoKwindla 2017 amanani enzuzo emali eziinkozo nenye imali, urhwebo nezinto ezifunyanwayo nezinye izinto ezihlawulwayo zithelekelelwa amaxabiso azo afanelekileyo ngenxa yokuvuthwa kwazo ngexesha elifutshane. Izinto zorhwebo ezifunyanwayo nezihlawulwayo ziza kuvuthwa kwiintsuku ezingama-30 ukusa kwezingama-60.

Amaxabiso afanelekileyo

Amaxabiso afanelekileyo empahla yexabiso kunye namatyala ayafana namaxabiso enzuzo aboniswe kwiphepha elibonisa umncono.

21. Ukungayihlawuliswa irhafu

IPlayhouse Company ayiyihlawuliswa irhafu ngokweCandelo le-10 (1)(cA)(l) loMthetho weNgeniso yeRhafu.

22. Imivuzo yabaphathi abayintloko kunye nebhunga

	EyoKwindla	Iyaxelwa kwakhona ngeyoKwindla
	2017	2016
	R	R
Abaphathi abayintloko		
L Bukhosini - (iNgqonyela noMlawuli wezobugcisa)		
Umvuzo	1 904 712	1 784 414
Ibhonasi	1 518 470	1 419 131
Isibonelelo somhlala-phantsi nesezempilo	126 539	118 261
Umnxeba ophathwayo nokunye	250 548	234 157
	9 155	12 865
A Mohanparasadh - (Igosa eliyintloko yezemali)	1 305 762	1 226 892
Umvuzo	1 142 901	1 069 314
Ibhonasi	95 242	89 109
Umnxeba ophathwayo nokunye	67 619	68 469
O Hlangu - (Umphathi weenkono zenkxaso)	1 096 132	1 033 969
Umvuzo	823 334	769 471
Ibhonasi	68 611	64 122
Isibonelelo somhlala-phantsi nesezempilo	153 922	145 035
Umnxeba ophathwayo nokunye	50 265	55 341
Imivuzo yabaphathi abayintloko iyonke	4 306 606	4 045 274

Amanqaku Eengxelo Zemali Zonyaka (liyaqhutywa)

	EyoKwindla 2017 R	Iyaxelwa kwakhona ngeyoKwindla 2016 R
22. Imivuzo yabaphathi abayintloko kunye nebhunga (liyaqhutywa)		
Amalungu ebhunga neekomiti eziphantsi kwawo	134 321	251 780
HC Mgabadeleli - Usihlalo webhunga	45 325	108 044
JT Mtshali - Usekela sihlalo webhunga	-	19 872
L Theron* - Ilungu lekomiti yophicotho-zincwadi	-	-
S Gounden	8 084	20 664
C Jugnarayan*	18 539	18 368
N Mbele	11 512	16 192
FE Khumalo	13 840	23 080
KB Kunene	132	-
M Purkey	-	6 888
I Ntuli	-	6 528
NLB Radebe*	13 833	6 888
SP Ndlela	18 400	25 256
Sadha Naidoo	4 656	-
Imivuzo iyonke	4 440 927	4 297 054
* Ilungu langaphandle elizimeleyo leKomiti yoPhicotho-zincwadi		

23. Izibonelelo zomhlala-phantsi

Abasebenzi abasisigxina bathabatha inxaxheba kwingxowa yomhlala-phantsi eyasungulwa yiPerforming Arts Companies of South Africa okanye ingxowa yesibonelelo eyasungulwa yimanyano yabasebenzi iSouth African Commercial Catering and Allied Workers Union. Ingxowa-mali yomhlala-phantsi neyesibonelelo zilawulwa nguMthetho weNgxowa-mali yoMhlala-phantsi. Ingxowa-mali yesibonelelo izizicwangciso ezichazwayo zokunikela kwaye ayifuni kuxatyiswa ngamaxesha athile.

Umnikelo kwingxowa-mali yesibonelelo somhlala-phantsi zi-R3 191 784 (2016: R 2 951 994) yaye uqukwa kwiindleko zabasebenzi.

24. Amaqela anonxulumano

24.1 Isebe lezoBugcisa neNkcubeko likaZwelonke

Izibonelelo ezifunyenwe kulo nyaka-mali zibalelwa kuma-R 43 815 000, kwaye ezonyaka-mali ka-2017/18 ziza kubalelwa kuma-R 49 838 000.

24.2 Isebe lezoBugcisa neNkcubeko laseKZN

Izibonelelo ezifunyenwe kunyaka-mali ka-2016/17 sibalelwa kwi-R7 786 500, size sonyaka-mali ka-2017/18 sibalelwe kwi-R 8 599 138.

24.3 Umasipala waseThekwini

Ifikelele kwi-R3 000 000 intlawulo efunyenwe kulo nyaka-mali ngowama-24 kweyeDwarha 2016 nelungiselelwe ixesha eliphakathi kowoku-1 kweyeKhala 2016 nowama-30 kweyeSilimela 2017 ngokungqinelana nonyaka-mali woomasipala. Imali efikelele kuma-R750 000 yenyanga kaTshazimpuzi, ekaCanzibe neyeSilimela 2017 irhoxiselwe unyaka-mali ka-2017/18. Intlawulo yenkxaso ekwi-R3 000 000 (2016: R2 250 000) ishicilelwe njengengeniso yalo nyaka, i-R2 250 000 (R3 000 000 - R750 000) kunye ne-R750 000 irhoxiswe kunyaka-mali ophelileyo.

24.4 Isebe leMisebenzi kaRhulumente

Eli Sebe lilo elingumnini osemthethweni womhlaba nezakhiwo ezisetyenziswa yiPlayhouse Company kwaye iPlayhouse Company ayikuhlawuleli ukusebenzisa lo mhlaba nezakhiwo. Eli Sebe lihlawule irhafu yalo nyaka ngolu hlobo: R7 697 389 (2016: R7 202 134).

Amanqaku Eengxelo Zemali Zonyaka (Iiyaqhutywa)

EyoKwindla	Iyaxelwa kwakhona ngeyoKwindla
2017	2016
R	R

24. Amaqela anonxulumano (Iiyaqhutywa)

24.5 *KwaZulu-Natal Philharmonic Orchestra - KZNPO*

Ngomhla woku-1 kuTshazimpuzi ngo-1998 iPlayhouse Company yathi yathoba ubukhulu bokusebenza kwayo ngokungqinelana nemithetho-siseko equlethwe liPhepha leNgcaciso yoMgaqo-nkqubo leSebe lezoBugcisa, iNkcubeko, ezobuNzululwazi nobuChwepheshe. Zimbini iinjongo ezingundoqo ezaziqhuba oku kulungiswa ngokutsha: ukususa intsilelo yohlahlo-lwabiwo mali kwakunye nokumiliselele izicwangciso zokuthintela intsilelo kwixa elizayo. Enye indlela yokunciphisa inkcitho yayikukubhalisa iKZNPO njengombutho ongenzi nzuwo ozimeleyo weCandelo lama-21. Ngenxa yezi nguqu la maziko mabini avuma ukusungula ubudlelwane axhamla kubo omabini.

Kukho isivumelwano sentsebenziswano esityikitywe yiPlayhouse Company neKZNPO. Esi sivumelwano siquka ezi zinto zilandelayo:

- Ukusebenzisa inxalenye yesakhiwo solawulo sePlayhouse Company.
- Ukufikelela kwiinkonzo zemali nezemicimbi yabasebenzi abazihlawulelayo.
- Njengexalenye yenkqubo yokulungiswa ngokutsha ngo-1999 impahla yexabiso (izixhobo ze-orchestra, imibhalo-ngqangi namanqaku ezixabiso ama-R328 739 zanikelwa kwiKZNPO simahla.
- IPlayhouse Company ifumana isaphulelo kwiinkonzo zobugcisa ezinikwa yiKZNPO ePlayhouse Company.

IPlayhouse Company isebenzise iinkonzo zeKZNPO kwiimveliso eziliqela ngobuchule nemvisiswano enceda la maziko omabini ukuze anike iinkonzo ngokwegunya leziko ngalinye.

Iintlawulo ezenziwa yiPlayhouse Company kwiKZNPO	1 484 335	703 435
Inzuzo yePlayhouse Company	627 267	158 189
Iintlawulo ezenziwa yiKZNPO kwiPlayhouse Company	437 778	250 013

I-KZNPO kuphela kweorkhestra enika iinkonzo ezikumila kunje KwaZulu-Natala. Ukusebenzisa iziko lasekuhlaleni konga imali nto leyo inciphisa iindleko zohambo nezokulala.

Ingqonyela yeKZNPO itshate neNgqonyela yeziko iPlayhouse Company.

24.6 *Ibhunga*

IBhunga lonyulwa nguMphathiswa wezoBugcisa neNkcubeko ukuze longamele lize liqinisekise ulawulo lwequmrhu olunobulungisa. IBhunga lineekomiti eziliqela ezingaphantsi kwalo ezifana neKomiti yezoBugcisa noKunyus'ingxowa-mali, eyeZemali, eyoPhicotho-zincwadi noLawulo lweQumrhu, eyeMicimbi yaBasebenzi neMivuzo ezikhokela nezancedisa abaphathi abathi baqeshwe liBhunga. Jonga inqaku lama-20 - imbuyekezo.

Njengomntu onamava okuthethat esidlangalaleni nokulawula imisitho kweli lizwe nakwihlabathi jikelele, uNkszn S Ndelela wanikwa uxanduva lokokuba anguMphathi-nkqubo kumsitho owodwa wokunyusa ingxowa-mali yecandelo lezobugcisa leziko iPlayhouse. Lo msitho wawungenyanga yeThupha. Ngalo msebenzi wathi wavuzwa ngemali engama-R 10 000.

24.7 *Abasebenzi abangundoqo*

Ingqonyela nomlawuli wezobugcisa - nguLinda Bukhosini

Igosa eliyintloko yezemali - nguAmar Mohanparasadh

Umphathi weenkonzo zenkxaso- nguOscar Hlangu

25. Imisitho yakamva

Akukho misitho ibalulekileyo eyenzeke phakathi komhla wokwenziwa kwephepha elibonisa intsalela/umncono nomhla wokwenziwa kwale ngxelo.

26. Inkcitho enxamnye nomthetho, engenaziqhamo okanye eyilahleko

Akukho lahleko iphathekayo yenziwe kukwaphula umthetho kwaye akukho nkcitho inxamnye nomthetho, ingenaziqhamo okanye eyilahleko eyenziwe ngonyaka ophela ngowama-31 kweyoKwindla 2017.

Amanqaku Eengxelo Zemali Zonyaka (Iiyaqhutywa)

EyoKwindla	Iyaxelwa kwakhona ngeyoKwindla
2017	2016
R	R

27. Iinkonzo zodidi oluthile

27.1. Iziko iCompany lizifumene iinkonzo zodidi oluthile ezibenefuthe ekusebenzeni kwalo nakwiinjongo zokuhambisa iinkonzo. Ezi nkonzo zodidi oluthile zinxulumene nerhafu ehlawulwe liSebe leMisebenzi kaRhulumente laseKZN zigqaliwe kwiingxelo zemali zonyaka.

Irhafu ehlawulwe liSebe leMisebenzi kaRhulumente laseKZN

7 697 389

7 202 134

Ezi nkonzo zodidi oluthile zilandelayo azigqalwanga kwiingxelo zemali zonyaka.

27.2. Iinkonzo zodidi oluthile ezinikwe liBhunga namalungu ekomiti aqeshwe nguRhulumente:

Ummiselo kaNondyabo “ongezibonelelo zenzuzo yabasebenzi bakarhulumente nabakumanye amaziko” ubalula ukuba abasebenzi bakarhulumente kaZwelonke, owePhondo noweNgingqi okanye abasebenzi bamaziko, iiarhente nemibutho karhulumente abakulungelanga ukufumana imivuzo eyongezelelweyo.

Amalungu amabini eBhunga nekomiti aqeshwe ngurhulumente kwaye akakhange afumane mirhumo ngokuhlalela iintlanganiso zeBhunga nezekomiti.

27.3. Ubudlelwane bopapasho nobamajelo eendaba bodidi oluthile:

Enye yeenjongo zeziko zeAPP ijongene nobudlelwane bopapasho kunye namajelo eendaba bodidi oluthile. xa kuthe kwavela igama leli ziko kuyo nayiphi na into ebhaliweyo yejelo leendaba, kuthatyathwa imilinganiselo yenqaku elo libhaliweyo kuze kusetyenziswe inkqubo ethile ukwenza ixabiso ngopapasho olukudidi oluthile. Eli ziko alinalulawulo lwaneleyo lweenkonzo ezinikwayo.

28. Iziniki-maxabiso ezingarhoxiswayo ezibophelelayo

Ngomhla wokwenziwa kwephepha elibonisa umncono iPlayhouse Company ibinembophelelo engekenziwa enxulumene neziniki-maxabiso ezingarhoxiswayo ezinikwe apha enyakeni. Iziniki-maxabiso zinikwe ngolu hlobo:

Ukuphuculwa kwestudiyo sokushicilela	5 045 344
Iizkrini zeqonga zeLed	4 981 629
Ukuphuculwa kwezixhobo zokulayita ethiyetha	5 020 982
Ukuhlaziywa kweOpera Sound	421 800
Ukuphucula indawo yolwamkelo yeofisi eyintloko kunye neFoyer	222 870
Ukutshintshwa kophahla lweAlhambra neTudor	9 985 718
Ii-generator	-
	10 202 276
	10 202 276
	25 678 343

29. Amanani othelekiso

Impazamo yonyaka ogqithileyo (inqaku 2) inxulumene neenkonzo zodidi oluthile zika-2017 kwakunye nonyaka ogqithileyo. Iziphumo zonyaka ogqithileyo zirhwebo zixeliwe kwakhona. Iingxelo zemali zonyaka zikubhengeza oku ngolu hlobo “Iyaxelwa kwakhona yeyoKwindla 2016” kwiinkcukacha zemali.

Amanqaku Eengxelo Zemali Zonyaka (liyaqhutywa)

	EyoKwindla	Iyaxelwa kwakhona ngeyoKwindla
	2017	2016
	R	R
30. Ukumanywa kohlahlo-lwabiwo mali nengxelo yokusebenza kwemali		
Intsalela iyonke ngokwengxelo yokusebenza kwemali	12 569 275	15 798 383
Ilungiselelwe:		
Ukunyuka kwesibonelelo esiyinkunzi esivela kwiDAC	(6 635 541)	(17 015 084)
Ukunyuka kwezibonelelo ezifunyenweyo	(2 279 200)	(2 170 000)
Ukunyuka kwenkxaso-mali yokuboniswa kweemveliso	(103)	(882 098)
Ukunyuka kwengeniso yemveliso	(4 874 808)	(623 960)
Ukunyuka kwengeniso yentengiso yotywala neyezinye izinto	(748 773)	(59 261)
Ukunyuka kwengeniso yemali	(805 090)	(1 256 621)
Ukuhla kwenkcitho yemveliso	(2 103 532)	(1 301 580)
Ukuhla kokuvuzwa kwabasebenzi njengoko ezinye izithuba zingekazaliswa	(1 087 515)	(1 692 239)
Ukuhla kwezinto ezityiwayo, umbane nezokucoca	(115 304)	(513 690)
Ukuhla kwenkcitho yebhunga	(152 237)	(120 174)
(Ukuhla) Ukunyuka kweendleko zomnxeba	(2 744)	26 658
Ukuhla kweendleko zokugcina nokulungisa	(1 538 097)	(827 710)
Ukuhla kwezinye iindleko zokusebenza	(3 210 833)	(2 454 840)
Intsilelo kwintengiso yempahla yexabiso	15 871	-
Ukuhla kwexabiso	14 765 879	12 484 488
Inkcitho eyinkunzi ebekelwe imali bucala kodwa engafakwanga kwingxelo yokusebenza kwemali	(54 557 568)	(50 771 807)
Intsilelo eyintsalela ngokohlahlo-lwabiwo mali oluvunyiweyo (kuquka necapex)	(50 760 320)	(51 379 533)

Amanqaku Eengxelo Zemali Zonyaka (Iiyaqhutywa)

31.1. Ukumanya uhlahlo-lwabiwo mali nengxelo yokusebenza kwemali - inkcitho yokusebenza

INGXELO YOKUSEBENZA KWEMALI - IMALI EKHOYO NEQINGQIWEYO

	2017 IMALI EKHOYO	2017 IMALI EQINGQWE EKUQALENI	2017 IMALI EHLAZIWEYO	2017 UMAHLUKO	2017 UMAHLUKO
	R 000	R 000	R 000	R 000	%
INGENISO	95 903 995	66 718 525	73 668 181	22 235 814	
Izibonelelo	75 055 947	62 043 000	66 141 206	8 914 741	13%
Ingeniso yemveliso	5 948 878	1 816 500	2 071 725	3 877 153	187%
Amalizo nenkxaso-mali	2 499 103	-	2 499 000	103	0%
Irenti efunyenweyo	569 075	407 000	427 350	141 725	33%
Ukuqeshisa ngeendawo zemiboniso, impahla yokudlala neesethi	2 575 280	1 557 250	1 577 625	997 655	63%
Iindawo zokubhukishela ukubukela imidlalo - iimveliso zangaphandle	475 754	150 000	157 500	318 254	202%
Iibhari nezinye iintengiso	609 573	525 000	400 000	209 573	52%
Iinkonzo zodidi oluthile	7 697 389			7 697 389	
Ingeniso yamathuba athile	472 996	219 775	393 775	79 221	20%
INKCITHO	91 139 809	67 316 111	76 870 934	(14 268 875)	
Iindleko zemveliso	16 539 384	13 856 828	18 642 916	2 103 532	11%
Iindleko ezinxulumene nabasebenzi	33 365 842	32 040 950	34 453 357	1 087 515	3%
Ingxelo yonyaka	62 580	110 000	110 000	47 420	43%
Iimirhumo yabaphicothi-zincwadi bangaphandle	866 368	1 000 000	1 100 000	233 632	21%
Iimirhumo yabaphicothi-zincwadi bangaphakathi	672 823	428 000	450 000	(222 823)	-50%
Iindleko ezinxulumene nebhunga	252 387	663 600	404 624	152 237	38%
Ucoceko nogutyulo lweindle	1 374 897	1 352 749	1 446 979	72 082	5%
Izinto ezityiwayo	1 206 024	1 284 650	1 603 592	397 568	25%
Umbane	4 320 336	3 795 825	4 038 072	(282 264)	-7%
Ukhuseleko	3 085 650	2 942 500	3 148 475	62 825	2%
I-inshorensi	335 035	315 115	320 275	(14 760)	-5%
Iindleko zomthetho	21 079	60 000	30 000	8 921	30%
Intengiso	541 170	1 000 000	1 100 000	558 830	51%
Irhafu	7 697 389	-	-	(7 697 389)	
Ukulungiswa nokugcinwa	1 424 059	2 584 020	2 962 156	1 538 097	52%
Umxeba	389 845	373 175	392 589	2 744	1%
Uqeqesho	312 477	395 900	340 000	27 523	8%
Ukhenketho - kweli lizwe nolwaphesheya kweelwandle	390 164	642 000	598 327	208 163	35%
Amanzi	524 806	332 850	528 680	3 874	1%
Ukuhla kwexabiso	14 765 878	-	-	(14 765 878)	100%
Iindleko gabalala	2 991 616	4 137 948	5 200 892	2 209 276	42%
Intsalela evela kwimisebenzi	4 764 185	(597 586)	(3 202 752)	7 966 939	
Inzala efunyenweyo	7 805 090	3 250 000	7 000 000	805 090	12%
Intsalela yonyaka	12 569 275	2 652 414	3 797 248	8 772 029	

Iinguqu zohlahlo-lwabiwo mali oluvunyiweyo ukuya kuhlalo-mali lokugqibela

Ezinye izicelo zengeniso eyinkunzi zirhoxiselwe unyaka ongaphandle ngenxa yokungabikho kwenkxaso-mali evela kwaDAC.

Iinguqu eziphakathi kohlahlo-lwabiwo mali oluvunyiweyo nolokugqibela zisisiphumo semali eseleyo okanye ukwabiwa kwakhona kwemali ekuhlalo-lwabiwo mali.

Amanqaku Eengxelo Zemali Zonyaka (Iiyaqhutywa)

Ingcaciso yomahluko obonakalayo

Isibonelelo esiyinkunzi samkelwe ngokweGRAP 23 - Iminikelo nerhafu yengeniso engeyiyo eyolwananiso lirhafu neentlawulo. Iziko iPlayhouse Company libe nesiphelo esihle zonyaka wemveliso yaye iintengiso zamatikiti zigqithe ngaphaya kwezo beziqingqiwe.

Kungenwe kwizivumelwano ezitsha nabantu abaqeshileyo ebezingaqingqelwanga imali. Ingeniso yokuqeshisa iimveliso zangaphandle inyuke ngamandla kunaleyo ibiqingqiwe.

Ingeniso yendawo yokubhukishela izihlalo inyukile ngokungqinelana nokuqeshisa iimveliso zangaphandle.

Iindawo yentselo ixhamle kanobom kukunyuka kwenani labantu abazimasa imisitho yeemveliso zokuphela konyaka. Iinkonzo zodidi oluthile njengoko kubhengeziwe kwinqaku lama-27 Ukuqeshisa iindawo zemisitho kube ngaphaya koko bekuqingqiwe kuba zifunwa ngamandla iindawo zokubamba imisitho.

Iimveliso ezimbini, iMessiah kunye neKZN Community Arts Festival zilungiselelwe ukuba ziboniswe kwiikota ezimbini zokuqala zonyaka-mali omtsha. Inkxaso yezemali nanye inkxaso iza kunikwa amaqela afuna uncedo ukuze ayofikelele eGrahamstown kwiNational Arts Festival.

Imali eyongiwe kushicilelo nopapasho lwegxelo yonyaka ka-2016.

Imali eyongiwe kumrhumo ka-2016 woMphicothi-zincwadi jikelele ngenxa yeminye imirhumo eyahlawulwa kunyaka ogqithileyo.

Umsebenzi wophicotho-zincwadi lwangaphakathi osilelelyo ohlawulelwe kulo nyaka.

Imali eyongiwe ngenxa yamaphulo okonga imali. Amalungu eBhunga azimase inkomfa yeiSPA enye kuphela ngeyoMnga.

Imali eyongiwe ngenxa yamaphulo okonga imali.

Imali eyongiwe kwiindleko zeHVAC ngenxa yezivumelwano zokulungisa ekungenwe kuzo. Imali eyongiwe kumbane wangaphakathi njengoko kusetyenziswa izibane ezonga umbane nezihlala ixesha elide. Imali eyongiwe kwezinye izinto ingqinelana namaphulo okonga imali.

Iindleko zombane zinyuke ngaphezu koko bekulindlekile.

Izixhobo ezifunyenwe kulo nyaka zongeze iindleko ze-inshorensi.

Imali eyongiwe ngenxa yamaphulo okonga imali. Amagqwetha asetyenziswa kuphela kumatyala anobuzaza kakhulu.

Ibhunga lithabathe isigqibo sokubamba umsitho wokunyusa ingxowa-mali ukukhuthaza intengo yamatikiti eemveliso zexesha leziyolo omdlalo othi Sound of Music. Iindleko zalo msitho zahlawulwa kwimali yemveliso nto leyo ikhokelele ekubeni kongiwe imali kwimali yezentengiso.

Iinkonzo zodidi oluthile ezibhengezwe kwinqaku lama-27

Imali ekhoyo ibekelwe imisebenzi eza kwenziwa apho kuza kugcinwa khona iigenerator ezintathu ezithengiweyo.

Uqeqesho olucetyiweyo olungakhange luqhubkw ngenxa yokungafumaneki kwabasebenzi abafanelekileyo.

Iihambo zophapho kunye nendawo yokulala zibekiswa kwangoko ukuze kufunyanwe amaxabiso athotyweyo. Imali eyongiwe kwiindleko zeendawo zokulala idalwe ngumyalelo ovela kuNondyebo kaZwelonke wokuthoba imali echithwa kwiindawo zokulala.

Into engangenisi mali engabekelwa mali rhoqo ngonyaka.

Imali yesigcinelo esithandabuzekayo sama-R 500 000 ayisetyenziswanga. Imali eyongiwe kwiindleko eziliqela ngenxa yamaphulo okonga imali.

Imali etyalwe kwiibhanka inika inzala encumisayo.

Amanqaku Eengxelo Zemali Zonyaka (Iiyaqhutywa)

31.2. Ukumanya uhlahlo-lwabiwo mali nengxelo yokusebenza kwemali - inkcitho yemali eyinkunzi

IZONGEZO KWIMPAHLA YEXABISO EZINZILEYO - UQINGQO-MALI NEMALI EKHOYO

	2017 IMALI EKHOYO	2017 IMALI EQINGQWE EKUQALENI	2017 IMALI EHLAZIY- IWEYO	2017 UMAHLU- KO	2017 UMAHLU- KO	Ingcaciso yomahluko obonakalayo
	R 000	R 000	R 000	R 000	%	
Izixhobo ze-ofisi	272 725	100 000	768 000	495 275	64%	Kulibazisekile ukuthengwa kwezinye zezixhobo zaseofisini emva kokufumana isaziso sokuthotywa kwesabelo-mali nguNondyebo kaZwelonke.
Izixhobo zekhomyutha	1 300 158	225 000	225 000	(1 075 158)	-478%	Ukuthengwa kwe-server entsha ebifuneka ngamandla ukuze kusetyenzwe ngokufanelekileyo.
Izixhobo zeqonga	21 031 109	13 500 000	26 662 204	5 631 095	21%	Zinikiwe iziniki-maxabiso kulo nyaka yaye bezisaqhubeka ekupheleni konyaka. Uza kugqitywa umsebenzi kwikota yokuqala konyaka-mali omtsha.
Izakhiwo	11 058 503	-	26 902 364	15 843 861	59%	Iziniki-maxabiso zinikiwe kwaye uphele unyaka sele uqhuba umsebenzi.
Imali iyonke	33 662 494	13 825 000	54 557 568	20 895 074	38%	

linguqu ezikulahllo-lwabiwo mali oluvunyiweyo ukuya kuhlallo-lwabiwo lokugqibela zidalwe yimali eseleyo.

Inkxaso-mali yeprojekthi eziyinkunzi ifunyenwe ngomhla wama-31 kweyoKwindla ngo-2016 yaye le nkxaso-mali kuye kwafuneka iziswe kunyaka ophela ngomhla wama-31 kweyoKwindla ngo-2017 ukuze kumiliselwe kuze kusetyenzwe kwezi projekthi.







an agency of the
Department of Arts & Culture

RP250/2017

ISBN: 978-0-621-45724-7

www.playhousecompany.com