



The
Playhouse
Company

an agency of the
Department of Arts & Culture



Ingxelo Yonyaka
2018/2019



Iziqulatho

INDIMA A

1. Iinkcukacha zeziko likarhulumente ngokubanzi **2**
2. Uluhlu lwezifinyezo/lwamagama akhiwe ngoonobumba bokuqala **2**
3. Inkcazelo enobuchule **3**
4. Amagunya omthetho namanye **4**
5. Ubume bezikhundla zeziko **4**
6. Ingabula-zigcawu kaSihlalo **5**
7. Inkcazelo emfutshane eyenziwa yiNgqonyela **6**
8. Ingxelo yokuthabath'uxanduva nokuqinisekisa ukuchaneka kweNgxelo yoNyaka **18**

INDIMA B: IINKCUKACHA ZOKUSEBENZA

1. Ingxelo yokuthabath'uxanduva lweenkcukacha zokusebenza **20**
2. Ingxelo yoMphicothi-zincwadi: linjongo ezimiswe ngenx'engaphambili **21**
3. Iinkcukacha zokusebenza zenkqubo nganye **21**
4. Isishwankathelo seenkcukacha zemali **30**

INDIMA C: ULAWULO

1. Intshayelelo **31**
2. IBhunga **31**
3. Ulawulo lobungozi **33**

4. Icandelo lolawulo lwangaphakathi **33**
5. Icandelo loPhicotho-zincwadi lwangaphakathi **33**
6. Ikomiti yoPhicotho-zincwadi noLawulo **34**
7. Ukuthobela imithetho nemimiselo **34**
8. Ubuqhophololo norhwaphilizo **34**
9. Ukucutha imbambano yemidla **34**
10. Umgaqo wokuziphatha **35**
11. Imiba yezempilo, eyezokhuseleko neyokusingqongileyo **35**
12. Uxanduva lwasekuhlaleni **35**
13. Ingxelo yeKomiti yoPhicotho-zincwadi **36**

INDIMA D: ULAWULO LWEMICIMBI YABASEBENZI

1. Iinkcukacha-manani zokongamela ulawulo lwemicimbi yabasebenzi **38**

INDIMA E: IINKCUKACHA ZEMALI

1. Ingxelo yokuthabath'uxanduva nokuqinisekisa ukuchaneka kweNgxelo yoNyaka **40**
2. Ingxelo yeNgqonyela noMlawuli wezoBugcisa **41**
3. Ingxelo yePlayhouse Company enikwa nguMphicothi-zincwadi Jikelele ePalamente **42**
4. Iingxelo zemali zonyaka **45**



Indima A

1. IINKCUKACHA ZEZIKO LIKARHULUMENTE NGOKUBANZI

Igama elibhalisiweyo:	The Playhouse Company
Idilesi elizinze kuyo:	29 Acutt Street, Durban, 4001
Idilesi yeposi:	P O Box 5353, Durban, 4000
Inombolo yomnxeba:	+27 (0)31 369 9555
Inombolo yefeksi:	+27 (0)31 306 2166
Idilesi ye-imeyili:	cfo@playhousecompany.com
Idilesi ye-Website:	www.playhousecompany.com
Abaphicothi-zincwadi bangaphandle:	The Auditor-General of South Africa
Ibhanka:	First National Bank

2. ULUHLU LWEZIFINYEZO/LWAMAGAMA AKHIWE NGOONOBUMBA BOKUQALA

CEO	iNgqonyela
CFO	iGosa eliyiNtloko yezeMali
DAC	iSebe lezoBugcisa neNkcubeko
PFMA	uMthetho woLawulo lweMali kaRhulumente
MTEF	iNkqubo-sikhokelo yeNkcitho yoMbondi-sigaba
SAWAF	uMnyhadala woBugcisa wamaBhinqa aseMzantsi Afrika
SCM	iCandelo lolawulo lokunikwa kweenkonzo neziniki-maxabiso

3. INKCAZELO ENOBUCHULE

3.1. Umbono

Ukukhuthaza nokumilisela ukugqwesa kwezobugcisa nakwiyantlukwano yenkcubeko kubugcisa obuboniswayo.

3.2. Umsebenzi

Ukuze iwuzalisekise lo mbono wayo ulapha ngasentla iPlayhouse Company iwuchaza ngolu hlobo umsebenzi wayo:

Siphucula, sikhuthaza yaye silondoloza ubugcisa obuboniswayo ngokwenza ezi zinto zilandelayo:

- Ukuvelisa, ukuvelisa ngentsebenziswano nabanye nokubonisa ababukeli bethu abahluka-hlukeneyo nabakhula ngamandla imiboniso eyenziwe ngobuchule, ebonwabisayo nebefundisayo;
- Ukusebenzisa umsebenzi wethu ukuqwalasela umanyano ngokwentlalo, iyantlukwano yabantu nokuqukwa kwabo bonke abantu;
- Ukujolisa iimveliso zethu kubabukelil abaziindidi ngeendidi ngokusebenzisa indlela ejoliswe ngqo kubathengi nakwiintengiso;
- Ukumilisela uthando lobugcisa obuboniswayo, ukuphuhlisa ababukeli bengomso nokugunyazisa ukuveliswa kwemiboniso equlethe imiba yasekuhlaleni;
- Ukuxhasa amagcisa, iingcali zobugcisa nabasebenzi ngemfundo, ngoqeqesho nangophuhliso lwezakhono;
- Ukusebenzisana namahlakani ethu asekuhlaleni, akuzwelonke nakumazwe ngamazwe kwiinzame zokunwenwisa ifuthe leenkqubo zethu;
- Ukuphucula uzinzo ngokwasezimalini ngokusebenzisa iinkqubo ezihlangabezanayo zeenguqu nezoshishino ukulungiselela izizukulwana ezizayo;
- Nokuqinisekisa ukukhuseleka lwePlayhouse eyibhakana yembali.

3.3. Iinqobo ezisemgangathweni

Intsingiselo yazo emsebenzini owenziwa ePlayhouse Company



an agency of the
Department of Arts & Culture

UBUGCISA NOKUQUALIS'IZINTO EZINTSHA

Sikubeka phambili ukucinga ngobuchule nokuqualis'izinto ezintsha nembonakalo equka iinkalo ngeenkalo zobuhle belizwe lethu.

UKUBALASELA NEMFEZEKO

Sizimisele ukusebenza ngokufezekileyo nangokugqibeleleyo yaye siyandise imveliso yethu. Sizibekela ixesha xa sisebenza yaye sizimisela neenjongo. Sizibophelele ekuziphatheni ngendlela esesikweni yaye asiyinyamezeli tu intswela bulungisa nokubukulwa nokokuba kungayiphi na indlela. Sisebenza ngokubalaseleyo yaye siyafunda kwiimpazamo esizenzayo.

SINOBUNTU

Sizama kangangoko sinako ukusebenza ngenkathalo, ngovelwano, ngembeko nangokucingela ukuphatheka kwabasebenzi, abathengi kunye nabtahathi-nxaxheba bethu. Sisebenza ngokuzinikela ukuze sigcine okusingqongileyo kukhuselekile yaye kusempilweni, sikhusele impahla yethu yexabiso nezixhobo ezinqabileyo, siphuhlise abantu yaye sikhuthaze ukuphila ubomi obunempilo nobulinganayo bangasese nobasemsebenzini.

IYANTLUKWANO

Siyakuhlonela ukuzivakalisa kwabantu ngokwenkcubeko nangobugcisa nokukhuthaza ubulungisa obenziwa ngabantu ngokubanzi. Siphucula ukusetyenziswa kwamalungelo abantu absemngciphekweni yaye sikhuthaza ukufikelela kwabo kwiinkqubo nakumaziko ethu.

UZINZO

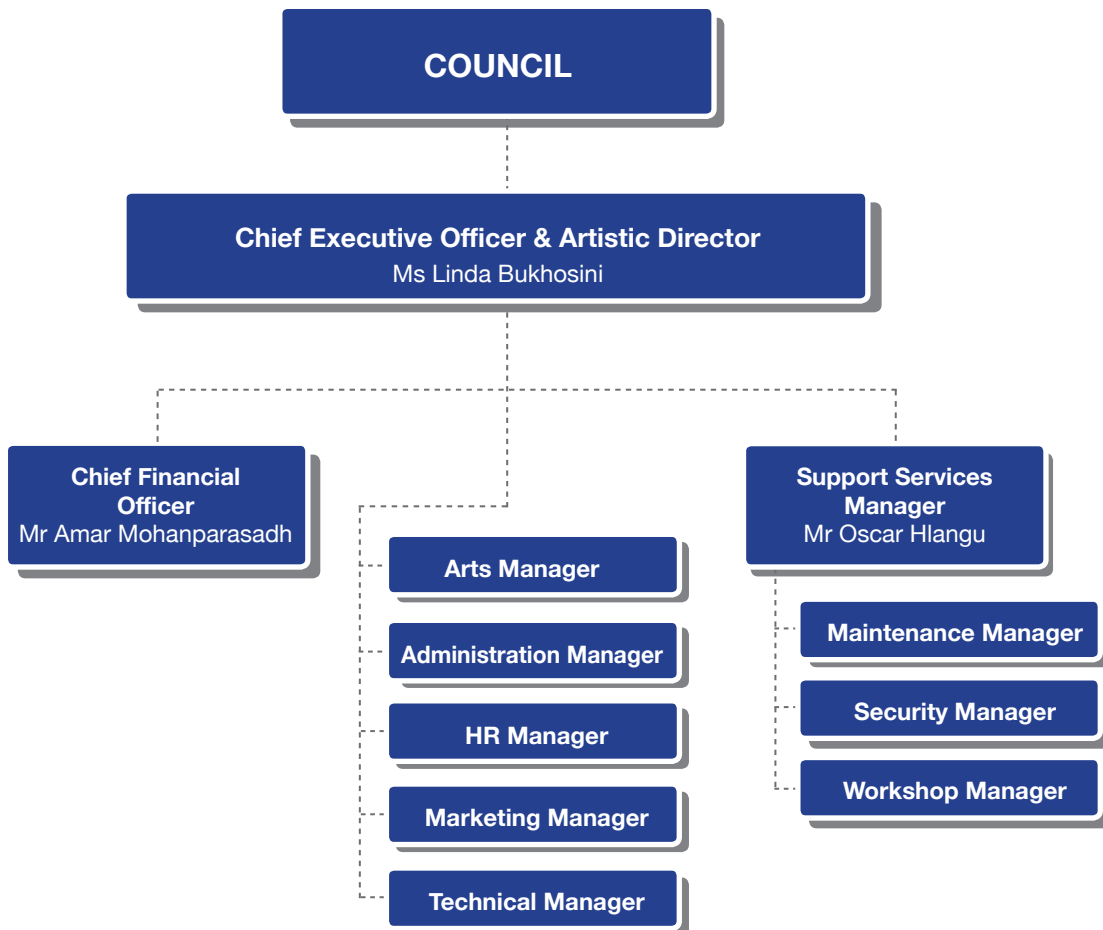
Sifuna ukumilisela amehlo ethu kwingomso yaye sigqale ukuba uzinzo lweziko luyaqhubeka ngawo onke amaxesha. Sisebenza ngenkuthalo ukuqinisekisa ukuba singungqa phambili kwimiboniso yasethiyetha eboniswa ngqo.

4. AMAGUNYA OMTHETHO NAMANYE AMAGUNYA

NgokweCandelo le-8(5) loMthetho wamaZiko eNkcubeko we-119 ka-1998, uxanduva lwePlayhouse Company kukuphucula, ukukhuthaza nokulondoloza ubugcisa obuboniswayo eMzantsi Afrika. I-Playhouse Company isebenza phantsi kwamagunya omthetho ahlukeneyo naquka phakathi kwamanye la alandelayo:

- UMthetho woLawulo lweMali kaRhulumente (PFMA);
- UMthetho woKwahlulwa kweNgeniso (DORA);
- UMthetho wamaZiko kaRhulumente;
- UMthetho oKhusela abaThengi (wam- 68 ka-2008);
- UMthetho weNkqubo-sikhokelo yoNxulumano lwamaSebe kaRhulumente (we-13 ka-2005);
- UMthetho woNxulumano naBasebenzi (LRA);
- UMthetho weeMeko zeNkonzo ezisisiseko (BCSA);
- UMthetho woKhuseleko neMpilo eMsebenzini (OHSA);
- UMthetho weMimiselo yoLawulo Jikelele (GARA);
- UMthetho oKhuthaza uKufikelela kuLwazi (PAIA);
- UMthetho oKhuthaza uKwenziwa koBulungisa (PAJA);
- UMthetho woBulungisa kwiNgqesho;
- UMthetho oKhusela iiNkcukacha zoMntu ngenkqu;
- Yonke imimiselo, imithetho neenkqubo-sikhokelo zikaNondyabo ezipapashiweyo;
- Nayo yonke imithetho yedolophu kaMasipala nemithetho yengingqi echaphazela iPlayhouse Company nemisebenzi eyenzayo.

5. UBUME BEZIKHUNDLA ZEZIKO



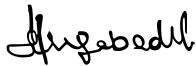
6. INGABULA-ZIGCAWU KASIHLO

Kulo nyaka-mali uphengululwayo iBhunga lidlale indima yokongamela neyokunik'inkxaso kubaphathi abayintloko beli ziko yaye lithe laqinisekisa ukuba iziko liyazifezekisa zonke iinjongo zalo ezingundoqo. I-Playhouse Company ifumene inkxaso eqhubekayo kwiSebe lezoBugcisa neNkcubeko lephondo nelikuzwelonke yaye eli ziko belingasokuze likwazi ukubonisa imiboniso elungiselelwe ababukeli balo ngokubanzi ngaphandle kwale nkxaso.

IBhunga likwazile ukwenza imisebenzi yalo ngentsebenziswano entle nabaphathi kunye neNgqonyela. Amalungiselelo olawulo lwequmrhu nokugcinwa kweenkqubo nolawulo abe ngumzekelo wale ntsebenziswano. Umsebenzi weBhunga neeKomiti zalo ubalulekile kakhulu ekuqinisekiseni ulawulo lwemali olunobulungisa yaye ndithanda ukuvakalisa umbulelo ongazenzisiyo kooSihlalo beeKomiti ezahlukeneyo ngenkuthalo, ukuzinikela nobunkokheli babo. Ndibamba ngazo zozibini kuwo onke amalungu eBhunga ngokuzimisela nokuzibophelela kwabo kweli ziko.

Siyawuncoma umsebenzi owenziwe ngabasebenzi basePlayhouse Company ukwenza eli ziko linkqenqenze phambili kubugcisa obuboniswayo. Sithi maz'enethole kuwo onke amagcisa, kumajelo osasazo nakubabukeli kuba bonke babe negalelo elikhulu ekuncediseni eli ziko ukuba lenze umsebenzi walo.

Sinemincili xa sinika le ngxelo yonyaka neengxelo zemali zePlayhouse Company zonyaka-mali ophela ngomhla wama-31 kweyoKwindla ngo-2018. Le ngxelo ikhankanya iinkalo ezahlukeneyo zomsebenzi omkhulu esiwenzela abantu bakuthi abahlukeneyo.



Nkszn Hlengiwe Christophina Mgabedeli

USihlalo weBhunga



7. INKCAZELO EMFUTSHANE EYENZIWA YINGQONYELA



Nkszn Linda Bukhosini
INgqonyela kwanoMlawuli
wezoBugcisa

Noxa icandelo lezobugcisa lijongene nothotho lwemiceli-mngeni kodwa lo nyaka uphengululwayo ube ngunyaka omhle nokhuthazayo ePlayhouse Company kwiinkalo ngeenkalo zeli ziko. Iindaba zokufumana ingxelo yophicotho-zincwadi engenasikhwasilima iminyaka elithoba ilandelelana zenza imincili nangakumbi. Ezi ndaba zibonisa ukuzinikela nobunkokheli obunikwa liBhunga leli ziko kwakunye nomoya wokuqalis'izinto ezintsha nowokubonisa ubuchule kunye neenzame zabaphathi nabasebenzi beli ziko zokufezekisa iinjongo zalo ngenyameko.

Iziko iPlayhouse Company lizimisele ukukhuthaza, ukulondoloza nokunika ubugcisa obahlukahlukeneyo nokunika ilizwe lethu ilifa lenkcubeko lisebenzisa imali ekhoyo yaye lithobela nemithetho elawulayo. Siyaqhubeka nokubonisa iimveliso zaseqongeni, iminyhadala kunye nemisitho yezibugcisa ephembelela incoko, ukuziva uyinxalenye nezondla umphefumlo. Siyakwamkela ukubalasele kobugcisa yaye sisebenzisa ubugcisa obuboniswayo njengesixhobo esiphendula nesibonisa ubomi obuguquguqukayo babemi baseMzantsi Afrika. Iziko iPlayhouse Company lisebenzisa ubugcisa obuboniswayo ukunika iinkqubo eziphuhlisa ulwazi olunzulu ngomanyano loluntu noxa lwahlukile nezilukhuthazayo olu manyano

Ms Linda Bukhosini
INgqonyela kwanoMlawuli wezoBugcisa

172
PRODUCTIONS

448
PERFORMANCES

18 352
ARTISTS

218 997
AUDIENCE





▶ The 3rd BRICS Film Festival Opening Night hosted by Minister Nathi Mthethwa

IIMVELISO EZENZIWA NGAPHAKATHI

Ziqulunqwe yiPlayhouse Company

Handel's Messiah

Umlawuli	Ralph Lawson
Umbhexeshi	Naum Roussine
Amagcisa	Lauren Dasappa, Violina Anguelov, Wayne Mkhize, Bongani Kubheka, iKwaZulu Natal Philharmonic Orchestra nePlayhouse Chorale

▼ The Playhouse Chorale in *Handel's Messiah*



How Long?

Umlawuli	Duma Ndlovu
Umyili-mdaniso	Somizi Mhlongo
Umlawuli womculo	Phelelani Mnomiya
Amagcisa	Thembi Mtshali, Mondli Makhoba

Whistle Stop

Umlawuli	Frances Slabolepszy
Amagcisa	Ameera Patel, Jaques de Silva



Ndoni

Umyili-mdaniso Musa Hlatswayo

Womb of Fire

Umlawuli Sara Matchett

Igcisa Rehane Abrahams

Confessions of a Blacklisted Woman...She Bellows

Umlawuli Zimkitha Kumbaca

Tribute Concert

Umlawuli Jerry Poee

Amagcisa Gloria Bosman, Lebo Mashile, Gcina Mhlophe, Khanyo Maphumulo, iPlayhouse Chorale, iKZN Philharmonic Orchestra

▼ Tribute Concert





▲ **Woza Albert!**

Woza Albert!

Umyili-mdaniso	Christopher John
Amagcisa	Mbongeni Ngema, Percy Mtwana

**Incoko:
Disrupting Patriarchy**

Umchongi	Dr Bronwyn Anderson
-----------------	---------------------

A Christmas Celebration

Umyili-mdaniso	Ralph Lawson
Umlawuli womculo	Lindelani Mkhize
Amagcisa	Zanele Mbokazi, Sindy Mabe, Tim Moloji, Khanyo Maphumulo, the Playhouse Chorale, the KZN Philharmonic Orchestra

**Incoko:
Be the Legacy – Champions for Gender Equality**

Umchongi	Prof Deeiva Bhana
-----------------	-------------------



▲ Scars

Africa Alive Fashion Show Pop-up

Umlawuli
wobuchule:

Derrick Mhlongo

Senzo's Battle

Umlawuli:

Bhekani Shabalala

Ukhuphiswano lweSicathamiya

Ukhuphiswano lukazwelonke lweSicathamiya olwenziwa yiPlayhouse Company luyinxalenye yenyanga yamagugu. Olu khuphiswano luquka amagcisa angaphaya kwama-2 000 avela mbombo zone zeli loMzantsi Afrika naza kube eyinxalenye yalo mnyhadala oza kuthabatha ubusuku bonke.

Sishaya Ingoma

Olu lukhuphiswano lomxhentso wesiZulu oquka iindidi zomxhentso ezifana nesgekle, Ushameni, Ingoma yezintombi, Ingoma Sikhuze, Umzansi nezinye eziliqela. Ngamagcisa angaphaya kwe-1 800 athabathe inxaheba kolu khuphiswano.

▼ Sishaya Ingoma



Community Arts Mentorship Programme

Le nkqubo inika amagcisa asekuhlaleni iqonga lokuphucula izakhono zawo kwisithuba seenyanga ezimbini kula macandelo ezobugcisa alandelayo: intshukumo, ukubhala imibhalo-ngqangi, ukulawula imiboniso, ilizwi, ukuqulunqa, ukudlala kwimiboniso, njl njl.

Umlawuli Matjamela Motlounq

Abaqeqeshwa 36

Okwethu Festival

Lo ngumnyhadala woluntu wobugcisa obanjelwa eMlazi Cinema, yaye uquka amagcisa angaphaya kwe-170.

Umlawuli Jerry Pooe



Playhouse Dance Residency

Abadanisi abathandathu abadanisa kwiimveliso zomdaniso ezine zasePlayhouse.

Abayili-mdaniso:

Scars	Lulu Mlangeni
Ukuzinza	Mzo Gasa
Magic Drum	Sandile Mkhize
We Walk Together	Sandile Mkhize

Playhouse Actors Studio

Abalinganiswa abathandathu abebeyinxalenye yezigaba ezine zasePlayhouse.

Umlawuli/ Umqeqeshi

Matjamela Motloung



Sundowner Concert & Poetry

Ezi ziikhonsathi zomculo nemibongo ezithandwayo kakhulu nezenziwa qho ngenyanga yaye ngamagcisa angaphaya kwama-294 athabatha inxaxheba kuzo.

Test Driving the Arts

Ezi ziikhonsathi ezibanjwa ngexesha lesidlo sasemini qho ngenyanga yaye zinika amagcisa asakhasayo iqonga lokuzibonakalisa kula macandelo: umaskanda, i-hip-hop, indlamu, ikwaito nezinye iindidi zomculo nezomdaniso.

► Tribute Concert



New Stages Fringe

Eli liqonga elivulelwe ukubonisa iimveliso eziqulunqwe ngamaqela asekuhlaleni ezobugcisa yaye liquka iimveliso ezisi-8.

SA Women's Arts Festival Fringe

Eli liqonga elivulelwe ukubonisa iimveliso ezijolise kubantu basetyhini yaye ziboniswa ngamaqela ezobugcisa asekuhlaleni.

National Arts Festival Showcase

Eli liphulo lokuxhasa amaqela ezobugcisa asekuhlaleni qho ngonyaka ngokuwanika iqonga lokubonisa iimveliso zabo ngaphambi kwe-National Arts Festival.



8. INGXELO YOKUTHABATH'UXANDUVA NOKUQINISEKISA UKUCHANEKA KWENGXELO YONYAKA

Ngokolwazi lwam nenkolelo yam, ndiqinisekisa oku kulandelayo:

Zonke iinkcukacha namanani abhengezwe kwiNgxelo yoNyaka ayangqinelana neeNgxelo zeMali zoNyaka eziphicothwe nguMphicothi-zincwadi Jikelele.

Ingxelo yoNyaka igqibelele, ichanekile kwaye akukho zinto zishiywe ngaphandle kuyo.

Ingxelo yoNyaka ilungiswe ngokwezikhokelo zokwenza iNgxelo yoNyaka ezikhutshwe nguNondyebo kaZwelonke.

Iingxelo zeMali zoNyaka (Indima E) zilungiswe ngokungqinelana nemigangatho yeGRAP esetyenziswa kwiziko likarhulumente. Igunya elinika ingxelo linoxanduva lokulungisa iiNgxelo zeMali zoNyaka kwanokugweba okwenziwa kwezi nkcukacha.

Igunya elixhuzul'imikhala yolawulo kwiziko linoxanduva lokusungula lize limilisele inkqubo yolawulo lwangaphakathi eyilelwe ukuze inike ingqiniseko ephathekayo yobulungisa nokuthembeka kweenkcukacha zokusebenza, iinkcukacha zemicimbi yabasebenzi kunye neeNgxelo zeMali zoNyaka.

Abaphicothi-zincwadi bangaphandle bavakalisa uluvo lwabo oluzimeleyo ngeeNgxelo zeMali zoNyaka.

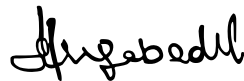
Ngokoluvo lwethu iNgxelo yoNyaka ibonisa ngobulungisa imisebenzi, iinkcukacha zokusebenza, iinkcukacha zemicimbi yabasebenzi kunye nemicimbi yezemali yeli ziko yonyaka-mali ophela ngomhla wama-31 kweyoKwindla ngo-2019.



Nkszn Linda Bukhosini

INgqonyela kwanoMlawuli wezoBugcisa

Umhla: 31 kweyeKhala 2019



Nkszn Hlengiwe Christophina Mgabedeli

USihlalo weBhunga

Umhla: 31 kweyeKhala 2019



Indima B

IINKCUKACHA ZOKUSEBENZA

1. INGXELO YOXANDUVA YEENKCUKACHA ZOKUSEBENZA

YONYAKA OPHELE NGOMHLA WAMA-31 KWEYOKWINDLA NGO-2019

Luxanduva lweNgqonyela yasePlayhouse Company ukulungisa iinkcukacha zokusebenza zeli ziko nokugweba okwenziwa kwezi nkcukacha.

Kwakhona iNgqonyela inoxanduva lokusungula nokumilisela inkqubo yolawulo lwangaphakathi elungiselelwe ukunika ingqiniseko efanelekileyo ngokufezeka nokuthembeka kweenkcukacha zokusebenza.

Inkcazelo	Inani (%)	Isizathu sokungaphunyezwa/ sokuphunyezwa kwenxalenye	Ungenelelo
Inani leenjongo zonyaka zokusebenza	53		
Iinjongo zonyaka zokusebenza eziphunyeziweyo	52 (98%)		
Iinjongo zonyaka zokusebenza ezingaphunyezwa	1 (2%)	Inani ebeliqingqelwe unyaka lababukeli abangama-250 000 (abahlawulayo nabangahlawuliyo) aliphunyezwa. Ngababukeli abangama-218 997 ababukele imiboniso. Bekufakelwa iqonga elitsha le-opera ngeyeDwarha ngo-2018 ukuya kuthi ga ekupheleni kwenyanga yoKwindla ngo-2019 yaye ngeli xesha ibingekho imiboniso eboniswayo kweli qonga. Lidla ngokunyuka inani lababukeli liye kuma-20 000 ukusa kuma-40 000 ngexesha leziyolo.	Akukho ngenlelo luza kwenziwa nanjengoko iqonga le-opera liza kuqala ukusebenza kwakhona kwikota yokuqala ka-2020.

Ngokoluvo lwam ezi nkcukacha zokusebenza zibonisa ngokufanelekileyo impumelelo ekhoyo xa ithelekiswa neenjongo ezicetyiweyo, izalathisi neenjongo ezikwisicwangciso sonyaka sePlayhouse Company sonyaka-mali ophele ngomhla wama-31 kweyoKwindla ngo-2019.

Iinkcukacha zokusebenza zePlayhouse Company zonyaka-mali ophele ngomhla wama-31 kweyoKwindla ngo-2019 ziphononongwe ngabaphicothi-zincwadi bangaphandle yaye ingxelo yabo inikwe kwiphepha 42-44.

Iinkcukacha zokusebenza zePlayhouse Company ezinikwe kwiphepha 21 ukusa kwiphepha 30 ziphunyezwe yiBhodi.



Nkszn Linda Bukhosini

INgqonyela kwanoMlawuli wezoBugcisa

2. INGXELO YOMPHICOTHI-ZINCWADI: IINJONGO EZIMISWE NGENX'ENGAPHAMBILI

UMphicothi-zincwadi Jikelele weloMzantsi Afrika wenza iinkqubo ezifanelekileyo zophicotho-zincwadi lweenkcukacha zokusebenza ukuze anike ingqiniseko esisiphumo sophicotho-zincwadi. Isiphumo sophicotho-zincwadi sokusebenza okuthelekiswa neenjongo ezimiswe ngenx'engaphambili siqukwa kwingxelo eya kubaphathi kwaye izinto ezifuna ukuphandwa eziphathekayo zixelwa phantsi kwesihloko seenjongo ezimiswe ngenx'engaphambili kwingxelo yezinye izinto zomthetho eziyimfuneko kwingxelo yomphicothi-zincwadi.

Jonga kwiphepha 42 leNqubo yoMphicothi-zincwadi eshicilelwe njengeNdima E: Iinkcukacha zemali.

3. IINKCUKACHA ZOKUSEBENZA KWENKQUBO NGANYE

3.1 Inkqubo 1: Ulawulo

3.1.1. Inkqubo ephantsi kwenye 1.1: Ulawulo lweQumrhu necandelo lezeMali

A. Injongo yenkqubo

Ukunika iziko ulawulo nenkxaso yezemali

B. Inkcuzelo:

B.1 Ubume

Icandelo lezemali lilawula imicimbi yezemali, ulawulo lwequmrhu kunye nokuthotyelwa kwemithetho elawulayo

B.2 Amacandelo anoxanduva

Icandelo lezemali

Iinjongo ezinobuchule/ Iziphumo	Iintshukumo zokufezekisa iinjongo ezinobuchule	Iinkcukacha ezisisiseko	Izalathisi zokusebenza ezinokulinganiswa nezinobungqina ngo- 2018/2019	Izalathisi zokusebenza ezinokulinganiswa nezinobungqina ngo- 2019/2020	Izalathisi zokusebenza ezinokulinganiswa nezinobungqina ngo-2020/2021	Izalathisi zokusebenza ezinokulinganiswa nezinobungqina ngo-2021/2022	Izalathisi zokusebenza ezinokulinganiswa nezinobungqina ngo- 2022/2023
Ukunika ulawulo lwezemali kunye nolawulo lwequmrhu olusebenzayo nolufanelekileyo.	Ukuyithobela ngokupheleleyo imithetho ngokwegunya lowiso-mthetho nokuqinisekisa ukuba ulawulo olumiliselweyo lungqinelana nezixhobo ezikhoyo.	Iziko lifumene ingxelo yophicotho-zincwadi engenachaphaza ngeyoKwindla ngo-2018.	Ingxelo yophicotho-zincwadi engenachaphaza ngomhla wama-31 kweyoKwindla	Ingxelo yophicotho-zincwadi engenachaphaza ngomhla wama-31 kweyoKwindla	Ingxelo yophicotho-zincwadi engenachaphaza ngomhla wama-31 kweyoKwindla	Ingxelo yophicotho-zincwadi engenachaphaza ngomhla wama-31 kweyoKwindla	Ingxelo yophicotho-zincwadi engenachaphaza ngomhla wama-31 kweyoKwindla
		Izintlu zokuthobela zekota zithunyelwe ngexesha kweyoKwindla ngo-2018.	Uluhlu lokuthobela i-PFMA/ uNondyebo kaZwelonke lwenziwa qho ngekota.	Uluhlu lokuthobela i-PFMA/ uNondyebo kaZwelonke lwenziwa qho ngekota.	Uluhlu lokuthobela i-PFMA/ uNondyebo kaZwelonke lwenziwa qho ngekota.	Uluhlu lokuthobela i-PFMA/ uNondyebo kaZwelonke lwenziwa qho ngekota.	Uluhlu lokuthobela i-PFMA/ uNondyebo kaZwelonke lwenziwa qho ngekota.
		Izicwangciso zonyaka zokusebenza zekota ngeyoKwindla ngo-2018 zithunyelwe ngexesha.	Ukuvelisa iingxelo zekota zesisicwangciso sonyaka sokusebenza	Ukuvelisa iingxelo zekota zesisicwangciso sonyaka sokusebenza	Ukuvelisa iingxelo zekota zesisicwangciso sonyaka sokusebenza	Ukuvelisa iingxelo zekota zesisicwangciso sonyaka sokusebenza	Ukuvelisa iingxelo zekota zesisicwangciso sonyaka sokusebenza

Iinjongo ezinobuchule, izalathisi zokusebenza, iinjongo ezicetyiweyo kunye nempumelelo ekhoyo

Iinjongo ezinobuchule	Iimpumelelo ekhoyo 2017-2018	Iinjongo ecetyiweyo 2018-2019	Iimpumelelo ekhoyo 2018-2019	Ukuphambuka kwinjongo ecetyiweyo ukuya kwimpumelelo ekhoyo ngo-2018-2019	Ingcaciso yokuphambuka
Ukunika ulawulo lwezemali kunye nolawulo lwequmrhu olusebenzayo nolufanelekileyo	Iphunyeziwe. Yingxelo yophicotho-zincwadi ecocekileyo nengenachaphaza efunyenwe kunyaka ophela ngowama-31 kweyoKwindla ngo-2018	Ingxelo yophicotho-zincwadi engenachaphaza ngowama-31 kweyoKwindla	Iphunyeziwe. Yingxelo yophicotho-zincwadi ecocekileyo nengenachaphaza efunyenwe kunyaka ophela ngowama-31 kweyoKwindla ngo-2019	Akukho	Ayikho
	Iphunyeziwe. Izintlu zokuthobela zekota zenziwe ngexesha	Uluhlu lokuthobela i-PFMA/ uNondyebo kaZwelonke lwenziwa rhoqo ngekota	Iphunyeziwe. Izintlu zokuthobela zekota zenziwe ngexesha	Akukho	Ayikho
	Iphunyeziwe. Izicwangciso zokusebenza zonyaka ezenziwa ngekota zeyoKwindla 2018 zithunyelwe ngexesha	Ukuvelisa iingxelo zekota zesisicwangciso sonyaka sokusebenza	Iphunyeziwe. Izicwangciso zokusebenza zonyaka ezenziwa ngekota zeyoKwindla 2019 zithunyelwe ngexesha	Akukho	Ayikho

Izalathisi zokusebenza ezingundoqo, iinjongo ezicetyiweyo kunye nempumelelo ekhoyo

Iziphumo: Iinjongo ezingundoqo	Iintshukumo zokufezekisa iinjongo	Izalathisi zokusebenza ezinokulinganiswa nezinobungqina 2018-2019	Impumelelo ekhoyo 2017- 2018	Iinjongo ecetyiweyo 2018- 2019	Impumelelo ekhoyo 2018- 2019	Ukuphambuka: okucetyiweyo/ okukhoyo 2018- 2019	Ingcaciso yokuphambuka
2.1 Ukunika ulawulo lwezemali kunye nolawulo lwequmrhu olusebenzayo nolufanelekileyo	Ukuqinisekisa ukuba iziko lilandela imikhwa enobulungisa yolawulo kunye nemithetho elawulayo	Ingxelo yophicotho-zincwadi engenachaphaza yonke iminyaka.	1	1	1	0	
	Ukuphengulula nokuhlaziya yonke imigaqo-nkqubo neenkqubo zeziko rhoqo ngonyaka	Unxibelelwano lonyaka oludandalazisa iinguqu kuyo yonke imigaqo-nkqubo yeziko ngowoku-1 kuTshazimpuzi	1	1	1	0	Ayikho
2.2 Ukumilisela ulawulo kunye neenkqubo zokwenza okukungasentla	Ukuqinisekisa ukuqinisekisa kophicotho-zincwadi lwangaphakathi ngokwesicwangciso sophicotho-zincwadi lwangaphakathi	Kuza kwenziwa uphicotho-zincwadi izihlandlo ezi-4 ngonyaka	4	4	6	2	Ibekho imali evumela ukuba senze uphicotho-zincwadi lwangaphakathi izihlandlo ezibini ukongeza kwezi zikhoyo
	Ukuqinisekisa ukuba iziko lilawulwa ngobulungisa kwanokuba lineenkqubo zolawulo	Ubuninzi yimiba ekumyinge we-10% engundoqo efuna ukuphandwa emayiphakanyiswe kwingxelo nganye yophicotho-zincwadi lwangaphakathi	0%	10%	0%	10%	Ayikho imiba engundoqo exeliweyo efuna ukuphandwa
	Kwenziwa uvavanyo lobungozi rhoqo ngonyaka	Kulungiswa ingxelo yovavanyo lobungozi enye (1) yonyaka rhoqo ngowama-30 kuTshazimpuzi	1	1	1	0	Ayikho
	Ukuphengulula isicwangciso seIT. Ukuphucula iziseko zokusebenza ze-IT. Ukunika onke amacandelo izixhobo ezaneleyo ze-IT.	Ixesha lokungasebenzi kweekhompuyutha eliboniswe kwingxelo yenyanga linganeno komyinge we-10%	0%	10%	0%	10%	Akhangela kubekho zehlo zokungasebenzi kweekhompuyutha
2.3 Impahla yexabiso ezinzileyo: Ukwandisa ubuchule kulawulo lwempahla yexabiso ezinzileyo	Ukuqinisekisa kwempahla yexabiso ezinzileyo kabini ngonyaka. Ukuhlaziya kwerejista yempahla yexabiso ezinzileyo qho ngenyanga nokuphawulwakwempahla yexabiso entsha ngekhawudi	Irejista yempahla yexabiso ezinzileyo egqibeleleyo ngelithobela uMgaqo-nkqubo weMpahla yexabiso eZinzileyo ngowama-31 kweyoKwindla	1	1	1	0	Ayikho
2.4 Icandelo lokunikwa kweenkonzo nezini- maxabiso (SCM): Ukunyanzelisa ukuthotyelwa kwemigaqo-nkqubo neenkqubo zeSCM	Ukuwamilelisa onke amanqaku kanondyebokwenza izinto ngexesha eliqingqiweyo	Ukuqinisekisa ukuba kuyathethwa nabasebenzi ngamanqaku okwenza izinto kwiintsuku ezingama-30 efunyenwe kuNondyebokho imizuzu yentlanganiso okanye imeyili engqina oku	Ithotyelwe ngokupheleleyo	Ithotyelwe ngokupheleleyo	Ithotyelwe ngokupheleleyo	0	Ayikho
2.5 Uhlahlo-lwabiwo mali kunye nokunik'ingxelo: Ukuphucula ulawulo lwemali kunye nolawulo lwengxowa-mali ye-Playhouse Company	Ukuqwalasela uhlahlo-lwabiwo mali nokuchaza umahluko qho ngenyanga nangekota	Umahluko we-5% xa uthelekiswa nohlahlo-lwabiwo mali olukhoyo mawucaciswe qho ngenyanga	12	12	12	0	Ayikho
	Uhlahlo-lwabiwo mali lonyaka kufuneka luthunyelwe kwiDAC ngowama-31 kweyeThupha, ngowama-30 kweyeNkanga luze olukugqibela luthunyelwe ngowe-15 kweyoMqungu minyaka le	Ulawulo lwenyanga lwee-akhawunti luza kuthunyelwa kubaphathi, kwiFINCO nakumalungu eKomiti yoPhicotho-zincwadi noLawulo ngowe-15 kwinyanga nganye	12	12	12	0	Ayikho
		Ulawulo lweeakhawunti lwekota luza kuthunyelwa kubathathi-nxaxheba abangundoqo kwiintsuku ezingama-30 iphelele ikota nganye	4	4	4	0	Ayikho
2.6 Inkqubo yokulawula amatyala: ukuvelisa inkqubo eza kunika isikhokelo kwindlela yokulawula amatyala amabi	Ukumilisela inkqubo yolawulo lwamatyala	Ubuncinane ngumyinge wama-90% wokuhlalulwa kwamatyala ngaphandle kwemiba yezomthetho ngowama-31 kweyoKwindla	100%	90%	100%	10%	Onke amatyala ngaphandle kwalawo emiba yezomthetho anokuhlalulwa

Ukumanya ukusebenza kunye nohlahlo-lwabiwo mali

	2018/2019			2017/2018		
	Imali	Ekhoyo	(Ngaphezulu)/ Nganeno	Imali	Ekhoyo	(Ngaphezulu)/ Nganeno
	R'000	R'000	R'000	R'000	R'000	R'000
Ulawulo lwequmrhu necandelo lezemali	15 432	15 241	192	13 595	13 016	578
Imali iyonke	15 432	15 241	192	13 595	13 016	578

3.1.2. Inkqubo ephantsi kwenye 1.2: Icandelo lemicimbi yabasebenzi

A. Injongo yenkqubo

Ukunika iziko inkxaso kwimicimbi yabasebenzi

B. Inkcazelo:

B.1 Ubume

Icandelo lemicimbi yabasebenzi lilawula imicimbi yabasebenzi kunye nokuthotyelwa kwemithetho elawula imicimbi yabasebenzi

B.2 Amacandelo anoxanduva

Icandelo lemicimbi yabasebenzi

Iinjongo ezinobuchule/ Iziphumo	Iintshukumo zokufezekisa iinjongo ezinobuchule	Iinkcukacha ezisisiseko	Izalathisi zokusebenza ezinokulinganiswa nezinobungqina ngo- 2018/2019	Izalathisi zokusebenza ezinokulinganiswa nezinobungqina ngo- 2019/2020	Izalathisi zokusebenza ezinokulinganiswa nezinobungqina ngo-2020/2021	Izalathisi zokusebenza ezinokulinganiswa nezinobungqina ngo-2021/2022	Izalathisi zokusebenza ezinokulinganiswa nezinobungqina ngo- 2022/2023
3. Ukunika iziko inkxaso efanelekileyo nokuhlangabezana neemfuno zeziko zemcimbi yabasebenzi	Ukunika uqeqesho lwezakhono oluqinisekisa abasebenzi abanezakhono ezikumgangatho ophhezulu	Ngumyinge wama-91% wesicwangciso soqeqesho omiliselwa ngowama-31 kweyoKwindla 2018	Ngumyinge wama-90% wesicwangciso soqeqesho omiliselwa ngowama-31 kweyoKwindla qho ngonyaka	Ngumyinge wama-90% wesicwangciso soqeqesho omiliselwa ngowama-31 kweyoKwindla qho ngonyaka	Ngumyinge wama-90% wesicwangciso soqeqesho omiliselwa ngowama-31 kweyoKwindla qho ngonyaka	Ngumyinge wama-90% wesicwangciso soqeqesho omiliselwa ngowama-31 kweyoKwindla qho ngonyaka	Ngumyinge wama-90% wesicwangciso soqeqesho omiliselwa ngowama-31 kweyoKwindla qho ngonyaka
	Ukuncedisa abaphathi kumiliselweni yolawulo lokusebenza	Uvavanyo lokusebenza lwethutyana nolokugqibela lwenziwe ngesha ngeyoKwindla 2018	Izivumelwano zokusebenza ziyilwa ngowama-31 kweyoKwindla kuze kwenziwe uvavanyo lokusebenza olwenziwa kabini ngonyaka.	Izivumelwano zokusebenza ziyilwa ngowama-31 kweyoKwindla kuze kwenziwe uvavanyo lokusebenza olwenziwa kabini ngonyaka.	Izivumelwano zokusebenza ziyilwa ngowama-31 kweyoKwindla kuze kwenziwe uvavanyo lokusebenza olwenziwa kabini ngonyaka.	Izivumelwano zokusebenza ziyilwa ngowama-31 kweyoKwindla kuze kwenziwe uvavanyo lokusebenza olwenziwa kabini ngonyaka.	Izivumelwano zokusebenza ziyilwa ngowama-31 kweyoKwindla kuze kwenziwe uvavanyo lokusebenza olwenziwa kabini ngonyaka.

Iinjongo ezinobuchule, izalathisi zokusebenza, iinjongo ezicetyiweyo nempumelelo ekhoyo

Iinjongo ezinobuchule	Iimpumelelo ekhoyo 2017-2018	Iinjongo ecetyiweyo 2018-2019	Iimpumelelo ekhoyo 2018-2019	Ukuphambuka kwinjongo ecetyiweyo ukuya kwimpumelelo ekhoyo ngo-2018-2019	Iingcaciso yokuphambuka
3. Ukunika iziko inkxaso efanelekileyo nokuhlangabezana neemfuno zeziko zemcimbi yabasebenzi	Iphunyeziwe. Ngumyinge wama-91% wesicwangciso soqeqesho omiliselweyo ekupheleni kweyoKwindla ngo-2018	Ngumyinge wama-90% wesicwangciso soqeqesho omiliselwa ngowama-31 kweyoKwindla qho ngonyaka	Iphunyeziwe. Ngumyinge wama-95% wesicwangciso soqeqesho omiliselweyo ekupheleni kweyoKwindla ngo-2019	5%	Umahluko okumyinge we-5% uyawululwa ngabaphathi
	Iphunyeziwe. Uphengululo lwesiqingatha sokuqala sonyaka lwenziwe ngeyeDwarha ngo-2017, lo gama olwesiqingatha sesibini lwenziwe ngoTshazimpuzi ngo-2018.	Izivumelwano zokusebenza ziyilwa ngowama-31 kweyoKwindla kuze kwenziwe uvavanyo lokusebenza olwenziwa kabini ngonyaka.	Iphunyeziwe. Uphengululo lwesiqingatha sokuqala sonyaka lwenziwe ngeyeDwarha ngo-2018, lo gama olwesiqingatha sesibini lwenziwe ngoTshazimpuzi ngo-2019.	Akukho	Ayikho

Izalathisi zokusebenza ezingundoqo, iinjongo ezicetyiweyo nempumelelo ekhoyo

Iziphumo: Iinjongo ezingundoqo	Iintshukumo zokufezekisa iinjongo	Izalathisi zokusebenza ezinokulinganiswa nezobungqina 2018-2019	Impumelelo ekhoyo 2017- 2018	Iinjongo ecetyiweyo 2018- 2019	Impumelelo ekhoyo 2018- 2019	Ukuphambuka: okucetyiweyo/ okukhoyo 2018- 2019	Ingcaciso yokuphambuka
3.1 Ukuqinisekisa ukuxhobisa iziko ngokuzingisileyo ngabasebenzi abanezakhono, abanobuchule nabakhutheleyo ukuhlangabezana neemfuno zeziko	Ukumiliseka iinkqubo ezisebenzayo zokuzingel' abasebenzi, ezoqeqesho nophuhliso kunye nezolawulo lokusebenza	Ezi zicwangciso neenkqubo ezilandelayo ziyasebenza ngowama-31 kweyoMqungu qho ngonyaka: inkqubo yokuzingel'abasebenzi, isicwangciso soqeqesho nophuhliso kunye nesicwangciso solawulo lokusebenza	1	1	1	0	Ayikho
3.2 Ukulawula, ukuqwalasela nokuvavanya ngokufanelekileyo ukutshintsha kwabasebenzi	Ukuphengulula ukutshintsha kwabasebenzi ngonyaka	Ukunik'ingxelo yokutshintsha kwabasebenzi qho ngenyanga	12	12	12	0	Ayikho
		Inani lezithuba ezivulekileyo linganeno komyinge we-10%	8.60%	10%	9.70%	0.30%	The 0.3% variance is manageable by management
		Ukuphengulula izithuba ezizalisweyo zithelekiswa nezo zibekelwe imali kuze kunikwe ingxelo ngoku kwiintlanganiso zanyanga zonke zabaphathi	12	12	12	0	Ayikho
3.3 Ukuthobela imithetho yomakulinganwe kwingqesho	1. Ukuphengulula isicwangciso somakulinganwe kwingqesho	Ukunik'ingxelo yenkqubela kumakulinganwe kwingqesho ithelekiswa nesicwangciso kwikota nganye	4	4	4	0	Ayikho
3.4 Uqeqesho nophuhliso	Ukunika uqeqesho lwezakhono oluxhobisa abasebenzi ukuze babalasele emsebenzini wabo	Ukuvelisa isicwangciso soqeqesho/ukusibekela imali rhoqo ngonyaka nokuqinisekisa ukumiliselwa kwaso ekupheleni kweyoK-windla qho ngonyaka	1	1	1	0	Ayikho
		Umyinge wama-90% wesicwangciso soqeqesho nemali esibekelwe yona siphunyezwa ngowama-31 kweyoKwindla qho ngonyaka	91%	90%	95%	5%	Ulawulo olululo lwesicwangciso luqinisekise umiliseko olukuma-92%
	Ukuxhobisa abasebenzi abaqeqeshwayo ngamava omsebenzi	Ukuqesha ubuncinane abasebenzi abaqeqeshwayo abane (4) ukuze bafumane amava omsebenzi	8	4	10	6	I-PC yenze izithuba ezi-6 ezongezelelweyo zabasebenzi abaqeqeshwayo
	Uphengululo lokusebenza kwabo bonke abasebenzi olwenziwa kabini ngonyaka	Uphengululo lokusebenza kwabasebenzi olwenziwa kabini ngonyaka luqoshelisiwe	2	2	2	0	Ayikho
3.5 Ukuqinisekisa imeko yokusebenza okuzinzileyo kweIR	Ukuqwalasela nokuphengulula imiba exeliweyo yezikhalazo neyoluleko	Ukunika ingxelo yemiba yezikhalazo neyoluleko qho ngekota	4	4	4	0	Ayikho
	Ukwakha nokugcina unxulumano nabasebenzi beli ziko olunentsebenziswano	Uthethwano neCollective Bargaining Forum ngemivuzo yabasebenzi qho ngonyaka	1	1	1	0	Ayikho

Ukumanya ukusebenza kunye nohlahlo-lwabiwo mali

	2018/2019			2017/2018		
	Imali	Ekhoyo	(Ngaphezulu)/ Nganeno	Imali	Ekhoyo	(Ngaphezulu)/ Nganeno
	R'000	R'000	R'000	R'000	R'000	R'000
Imicimbi yabasebenzi	2 918	3 389	(471)	2 567	1 917	651
Imali iyonke	2 918	3 389	(471)	2 567	1 917	651

3.1.3. Inkqubo ephantsi kwenye 1.3: linkonzo zenkxaso

A. Injongo yenkqubo

Ukunika iziko inkxaso yeziseko zokusebenza, eyenzuzo kunye neyokhuselo.

B. Inkcazelo:

B.1 Ubume

Icandelo leenkonziso zenkxaso lixhaswa licandelo lokugcina, indawo yokusebenzela eseMayville kunye necandelo lezokhuselo.

B.2 Amacandelo anoxanduva

linkonzo zenkxaso, indawo yokusebenzela eseMayville kunye necandelo lezokhuselo

linjongo ezinobuchule/ lziphumo	lintshukumo zokufezekisa iinjongo ezinobuchule	linkukacha ezisisiseko	Izalathisi zokusebenza ezinokulinganiswa nezinobungqina ngo- 2018/2019	Izalathisi zokusebenza ezinokulinganiswa nezinobungqina ngo- 2019/2020	Izalathisi zokusebenza ezinokulinganiswa nezinobungqina ngo-2020/2021	Izalathisi zokusebenza ezinokulinganiswa nezinobungqina ngo-2021/2022	Izalathisi zokusebenza ezinokulinganiswa nezinobungqina ngo- 2022/2023
Ukunika ulawulo lwempahla yexabiso olusebenzayo, olunobuchule nolukhuselekileyo	Ukuqulunqa isicwangciso esinabileyo senkxaso yeziseko zokusebenza nesokhuselo	Isicwangciso senkxaso nokhuseleko bezisebenza ngowama-31 kweyoKwindla ngo-2018. Inkqubela yenyanga nganye ixelwa kwiintlanganiso zabaphathi	Isicwangciso esinabileyo senkxaso yeziseko zokusebenza nokhuselo siyasebenza ngowoku-1 kweyoMdumba qho ngonyaka yaye kunikwa nengxelo yenkqubela yanyanga zonke	Isicwangciso esinabileyo senkxaso yeziseko zokusebenza nokhuselo siyasebenza ngowoku-1 kweyoMdumba qho ngonyaka yaye kunikwa nengxelo yenkqubela yanyanga zonke	Isicwangciso esinabileyo senkxaso yeziseko zokusebenza nokhuselo siyasebenza ngowoku-1 kweyoMdumba qho ngonyaka yaye kunikwa nengxelo yenkqubela yanyanga zonke	Isicwangciso esinabileyo senkxaso yeziseko zokusebenza nokhuselo siyasebenza ngowoku-1 kweyoMdumba qho ngonyaka yaye kunikwa nengxelo yenkqubela yanyanga zonke	Isicwangciso esinabileyo senkxaso yeziseko zokusebenza nokhuselo siyasebenza ngowoku-1 kweyoMdumba qho ngonyaka yaye kunikwa nengxelo yenkqubela yanyanga zonke

linjongo ezinobuchule, izalathisi zokusebenza, iinjongo ezicetyiweyo nempumelelo ekhoyo

linjongo ezinobuchule	Impumelelo ekhoyo 2017-2018	Injongo ecetyiweyo 2018-2019	Impumelelo ekhoyo 2018-2019	Ukuphambuka kwinjongo ecetyiweyo ukuya kwimpumelelo ekhoyo ngo-2018-2019	Ingcaciso yokuphambuka
Ukunika ulawulo lwempahla yexabiso olusebenzayo, olunobuchule nolukhuselekileyo	Iphunyeziwe. Isicwangciso senkxaso nokhuseleko bezisebenza ngowoku-1 kweyoMdumba. Inkqubela yenyanga nganye ixelwa kwiintlanganiso zabaphathi	Isicwangciso esinabileyo senkxaso yeziseko zokusebenza nesokhuselo ziyasebenza ngowoku-1 kweyoMdumba qho ngonyaka yaye kunikwa nengxelo yenkqubela yanyanga zonke	Iphunyeziwe. Isicwangciso senkxaso nokhuseleko bezisebenza ngowoku-1 kweyoMdumba. Inkqubela yenyanga nganye ixelwa kwiintlanganiso zabaphathi	Akukho	Ayikho

Izalathisi zokusebenza ezingundoqo, iinjongo ezicetyiweyo nempumelelo ekhoyo

Iziphumo: linjongo ezingundoqo	lintshukumo zokufezekisa iinjongo	Izalathisi zokusebenza ezinokulinganiswa nezinobungqina 2018-2019	Impumelelo ekhoyo 2017-2018	Injongo ecetyiweyo 2018- 2019	Impumelelo ekhoyo 2018- 2019	Ukuphambuka: okucetyiweyo/ okukhoyo 2018- 2019	Ingcaciso yokuphambuka
4.1 Ukunika ulawulo lwempahla yexabiso olusebenzayo, olunobuchule nolukhuselekileyo	Ukuyila nokumilisela isicwangciso esikhulu esisebenzayo, esinobuchule nesihamba nexesha sokugcina iinqwelo-mafutha, oomathshini kunye nezakhiwo ngowama-31 kweyoMqungu qho ngonyaka	Isicwangciso esikhulu sokugcina esityikityiweyo kunye nemizuzu yeentlanganiso zeenyanga zamacandelo	10	10	10	0	Ayikho
4.2 Ukuzingela inkxaso-mali yenkcitho eyinkunzi kuthethwana neNgqonyela	Ukuvelisa nokumilisela isicwangciso sonyaka senkxaso-mali yenkcitho eyinkunzi kwiinzame zokufumana inkxaso-mali yeprojekthi zenkcitho eyinkunzi	Isicwangciso sonyaka senkxaso-mali yenkcitho eyinkunzi ngowama-31 kweyoMqungu qho ngonyaka	1	1	1	0	Ayikho
4.3 Ukugcina imeko yokusebenza ikhuselekile kwaye inempilo	Ukuyila nokumilisela isicwangciso sezempilo nokhuseleko esingqinelana nemithetho elawulayo yezempilo neyokhuseleko	Ukuphengulula isicwangciso sezempilo nokhuseleko nokuthumela ingxelo ngowama-31 kweyoKwindla	1	1	1	0	Ayikho
		Iintlanganiso zekota zezempilo nokhuseleko ezinemizuzu eshicilelweyo	4	4	4	0	Ayikho
4.4 Ukuqinisekisa ukugcinwa ngokukuko kweenqwelo-mafutha zasePlayhouse	Ukuphengulula, ukuhlaziya nokumilisela isicwangciso sokugcina iinqwelo-mafutha	Isicwangciso sokugcina iinqwelo-mafutha siyasebenza ngowoku-1 kuTshazimpuzi qho ngonyaka kwaye siyamiselwa rhoqo	1	1	1	0	Ayikho

Ukumanya ukusebenza nohlahlo-lwabiwo mali

	2018/2019			2017/2018		
	Imali	Ekhoyo	(Ngaphezulu)/ Nganeno	Imali	Ekhoyo	(Ngaphezulu)/ Nganeno
	R'000	R'000	R'000	R'000	R'000	R'000
linkonzo zenkxaso	30 001	24 575	5 426	27 164	23 676	3 488
Imali iyonke	30 001	24 575	5 426	27 164	23 676	3 488

3.2 Inkqubo 2: Uphuhliso loshishino

3.2.1 Inkqubo ephantsi kwenye 2.1: linkonzo zobugcisa, ezentengiso nezobuchwepheshe

A. Injongo yenkqubo Ukuvelisa nokubonisa iimveliso, iikonsathi kunye nemisitho yezobugcisa eziindidi ngeendidi

B. Inkcazelo:

B.1. Ubume

Icandelo lezobugcisa lijongene neenkqubo zolawulo nezobugcisa.

Icandelo lezentengiso lijongene nonxibelelwano neentengiso.

Icandelo lezobuchwepheshe lijongene nobuchwepheshe bokubonisa imiboniso

B.2. Amacandelo anoxanduva

Icandelo lezobugcisa, elezentengiso kunye nelezobuchwepheshe

Iinjongo ezinobuchule/ Iziphumo	Iintshukumo zokufezekisa iinjongo ezinobuchule	Iinkcukacha ezisisiseko	Izalathisi zokusebenza ez-inokulinganiswa nezinobungqina ngo- 2018/2019	Izalathisi zokusebenza ez-inokulinganiswa nezinobungqina ngo- 2019/2020	Izalathisi zokusebenza ez-inokulinganiswa nezinobungqina ngo-2020/2021	Izalathisi zokusebenza ez-inokulinganiswa nezinobungqina ngo-2021/2022	Izalathisi zokusebenza ez-inokulinganiswa nezinobungqina ngo- 2022/2023
Ukuvelisa nokubonisa imiboniso eyahlukahlukeneyo enobugcisa, eyonwabisayo nefundisayo	Ukuvelisa isicwangciso sonyaka sezobugcisa esiquka kokubini iimveliso zobuchule neziphuhliso	Isicwangciso sezobugcisa sonyaka ophela ngowama-31 kweyoKwindla ngo-2018 siqukunjelwe ngowama-28 kweyoMdumba ngo-2019	Isicwangciso sonyaka sezobugcisa esigqibeleleyo siyasebenza ngowama-28 kweyoMdumba	Isicwangciso sonyaka sezobugcisa esigqibeleleyo siyasebenza ngowama-28 kweyoMdumba	Isicwangciso sonyaka sezobugcisa esigqibeleleyo siyasebenza ngowama-28 kweyoMdumba	Isicwangciso sonyaka sezobugcisa esigqibeleleyo siyasebenza ngowama-28 kweyoMdumba	Isicwangciso sonyaka sezobugcisa esigqibeleleyo siyasebenza ngowama-28 kweyoMdumba

Iinjongo ezinobuchule, izalathisi zokusebenza, iinjongo ezicetyiweyo nempumelelo ekhoyo

Iinjongo ezinobuchule	Iimpumelelo ekhoyo 2017-2018	Iinjongo ecetyiweyo 2018-2019	Iimpumelelo ekhoyo 2018-2019	Ukuphambuka kwinjongo ecetyiweyo ukuya kwimpumelelo ekhoyo ngo-2018-2019	Iingcaciso yokuphambuka
Ukuvelisa nokubonisa imiboniso eyahlukahlukeneyo enobugcisa, eyonwabisayo nefundisayo	Iphunyeziwe. Isicwangciso sonyaka sezobugcisa siqukunjelwe ngowama-31 kweyoMqungu	Isicwangciso sonyaka sezobugcisa esigqibeleleyo siyasebenza ngowama-31 kweyoMqungu	Iphunyeziwe. Isicwangciso sonyaka sezobugcisa siqukunjelwe ngowama-31 kweyoMqungu	Akukho	Ayikho

Izalathisi zokusebenza ezingundoqo, iinjongo ezicetyiweyo nempumelelo ekhoyo

Iziphumo: Iinjongo ezingundoqo	Iintshukumo zokufezekisa iinjongo	Izalathisi zokusebenza ezinokulinganiswa nezobungqina 2018-2019	Impumelelo ekhoyo 2017- 2018	Injongo ecetyiweyo 2018- 2019	Impumelelo ekhoyo 2018- 2019	Ukuphambuka: okucetyiweyo/ okukhoyo 2018- 2019	Ingcaciso yokuphambuka	
1.1 Ukuvelisa nokubonisa imiboniso enobugcisa, eyonwabisayo nefundisayo (kuxhomekeke kwimali ekhoyo)	Ukuvelisa inkqubo yonyaka yezobugcisa (AAP)	I-AAP egqibeleleyo ngowama-31 kweyoMqungu iza kuquka oku kulandelayo:	1	1	1	0	Ayikho	
	Ukumilisela inkqubo yonyaka yezobugcisa ngowama-31 kweyoKwindla qho ngonyaka.	a) Ubugcisa obenziwayo bomthonyama		2	2	2	0	Ayikho
		b) Amaqonga amatsha		7	3	15	12	Kuboniswe iimveliso ezongezelelweyo ebezifunwa ngamandla ngababukeli kunye namagcisa
		c) I-SA Women's Arts Festival		10	10	10	0	Ayikho
		d) Iinkqubo zezikolo		3	2	4	2	Kuboniswe iimveliso ezongezelelweyo ebezifunwa ngamandla ezikolweni
		e) I-Test Driving the Arts		14	11	14	3	Kwenziwe iikonsathi ezi-3 ebezingacetywanga nezongeziweyo ngethuba leSAWAF nangexesha leziyolo
		f) Ixesha leziyolo		2	2	3	1	Kuboniswe iimveliso ezongezelelweyo ebezifunwa ngamandla ngababukeli kunye namagcisa
		g) Iimveliso zentsebenziswano kunye nemisitho		15	12	16	4	Kuvele amathuba okuncedisaamagcisa/ abaqulunqi abongezelelweyo kodwa kungekho zindleko zithe kratya
		h) I-Community Arts Mentorship Programme		1	1	2	1	Kuvele amathuba okuncedisa amagcisa/ abaqulunqi abongezelelweyo
		i) Ukuqeshisa ngezinto ngaphandle kunye nemisitho		75	35	59	24	Demand for the venues exceeded expectation
		j) Iqonga elijikelezayo		85	40	60	20	Kuvele amathuba okubonisa imiboniso eyongezelelweyo kwizikolo ngezikolo kwiqonga elijikelezayo
		k) I-Sundowners		24	10	17	7	Kuboniswe imiboniso eyongezelelweyo ngenyanga kaCanzibe ukufaka ifuthe kwiinkqubo ezikhoyo
1.2 Ukuqinisekisa ubulungisa kwiinkqubo zethu zobugcisa	I-AAP iza kuqinisekisa ukuba ubuncinane akumyinge wama-80% amaqela ayefudula ebukulwa athi athabathe inxaxheba rhoqo ngonyaka	Inkqubo yophengululo lwamaqela nabalingane kwezobugcisa iza kuqinisekisa ukuthabatha inxaxheba kwamaqela ayefudula ebukulwa akumyinge wama-80% ubuncinane qho ngonyaka	93%	80%	81%	1%	Iimveliso ezongezelelweyo ezibonisiweyo zisincede ukunyusa ukufikelela kwethu kumaqela ayefudula ebukulwa	
1.3 Ukumisa nokuqinisa iPlayhouse Company njengophawu olubalulekileyo, ukuthengisa iimveliso zangaphakathi nokusungula uthelwano lwenkxaso-mali yeemveliso	Ukuqinisa intsebenziswano namajelo eendaba	Kufunyenwe inkxaso-mali ekwixabiso elimalunga nama-R 250 000 ngonyaka	R 348 308	R 250 000	R 922 760	R 672 760	I-Playhouse Company ifumene inkxaso kubathathi-nxaxheba	
	Ukuvelisa amaphulo entengiso yeemveliso ezahlukahlukeneyo zePlayhouse Company	Isicwangciso sentengiso siyasebenza ngowama-31 kweyoMqungu qho ngonyaka	1	1	1	0	Ayikho	
	Ukuqinisa ubudlelwane/ unxulumano nabathathi-nxaxheba abafanelekileyo	Isicwangciso solawulo lwabathathi-nxaxheba siyasebenza ngowama-31 kweyoMqungu qho ngonyaka	1	1	1	0	Ayikho	

Iziphumo: linjongo ezingundoqo	Iintshukumo zokufezekisa iinjongo	Izalathisi zokusebenza ezinokulinganiswa nezinobungqina 2018-2019	Impumelelo ekhoyo 2017- 2018	Injongo ecetyiweyo 2018- 2019	Impumelelo ekhoyo 2018- 2019	Ukuphambuka: okucetyiweyo/ okukhoyo 2018- 2019	Ingcaciso yokuphambuka
1.4 Ukuqinisekisa ukuxhotyiswa kwababukeli okukuko ngokumiliselwa kwenkqubo yezobugcisa.	Ukuzimasa kwababukeli abakuma-250 000 per ubuncinane ngonyaka (ababukeli ababhatalayo nabangabhataliyo)	Ukuzimasa kwababukeli kunye nengxelo yentengiso yamatikiti kufuneka zibonise ukuzimasa kwababukeli abakuma-250 000 ubuncinane ngonyaka (ababhatalayo nabangabhataliyo)	261 530	250 000	218 997	(31 003)	Bekufakwa iqonga elitsha ukusukela ngeyeDwarha 2018 ukuya kuthi ga ekupheleni kweyoKwindla 2019. Akukho miboniso ibonisiweyo ngeli xesha. Ixesha leziyolo lidla ngokuzisa ababukeli abaninzi nabaphakathi kwama-20 000 nama-40 000
	Ukuzimasa kwababukeli ababhatalayo abakuma-45 000 ngonyaka ubuncinane	Ukuzimasa kwababukeli kunye nengxelo yentengiso yamatikiti kufuneka zibonise ukuzimasa kwababukeli abakuma-45 000 ubuncinane ngonyaka	72 642	45 000	81 307	36 307	Iofisi yokubhukishela izihlalo ifunwe ngokugqithisileyo koko bekulindelekile
1.5 Iinkonzo zobuchwepheshe baseqongeni: ukuqinisekisa ukusebenza ngokukuko kwazo zonke iindawo zokubonisa nezixhobo zethiyetha, isandi, izibane, impahla enxitywa xa kudlalwa kunye nestudiyo sokushicilela	Ukuphengulula nokumiliselela izicwangciso zokugcina zonke iindawo nezixhobo: isandi, izibane, impahla enxitywa xa kudlalwa kunye nestudiyo sokushicilela	Ikho ingxelo yenyanga yokugcina nenobungqina bokuphucula zonke iindawo nezixhobo, isandi, izibane, impahla enxitywa xa kudlalwa kunye nestudiyo sokushicilela	12	12	12	0	Ayikho
1.6 Ukunika inkonzo yokukhathalela abathengi ekumgangatho opezulu kwindawo yolwamkelo iFront of House	Ukwenza uphando oluqhubekayo lokwaneliseka kwabathengi	Ukunika ingxelo yophando lokwaneliseka kwabathengi qho ngenyanga	12	12	12	0	Ayikho

Ukumanya ukusebenza nohlahlo-lwabiwo mali

	2018/2019			2017/2018		
	Imali	Ekhoyo	(Ngaphezulu)/ Nganeno	Imali	Ekhoyo	(Ngaphezulu)/ Nganeno
	R'000	R'000	R'000	R'000	R'000	R'000
1. Iinkonzo zobugcisa nezobuchwepheshe	39 314	37 334	1 980	36 833	29 542	7 291
Imali iyonke	39 314	37 334	1 980	36 833	29 542	7 291

3.3. Inkqubo 3: Ingeniso

A. Injongo yenkqubo

Ukwenza ingeniso yodidi lwesibini

B. Inkcazelo:

B.1 Ubume

Icandelo lezemali lijongene nengeniso yotyalo-mali, icandelo lezobugcisa lijongene nengeniso enxulumene neemveliso lize icandelo leenkono zenkxaso lijongane nengeniso yerenti, eyeekhostyumu, eyeesethi kunye neyempahla yeqonga.

B.2 Amacandelo anoxanduva

Icandelo lezemali, elezobugcisa neleenkono zenkxaso

Iinjongo ezinobuchule/ Iziphumo	Iintshukumo zokufezekisa iinjongo ezinobuchule	Iinkcukacha ezisisiseko	Izalathisi zokusebenza ezinokulinganiswa nezinobungqina ngo- 2018/2019	Izalathisi zokusebenza ezinokulinganiswa nezinobungqina ngo-2019/2020	Izalathisi zokusebenza ezinokulinganiswa nezinobungqina ngo-2020/2021	Izalathisi zokusebenza ezinokulinganiswa nezinobungqina ngo-2021/2022	Izalathisi zokusebenza ezinokulinganiswa nezinobungqina ngo- 2022/2023
Ukwandisa imithombo yengeniso yeziko.	Ukudibanisa nokumanya izixhobo zenkxaso-mali yeziseko zokusebenza neemfuno zeziko zemithombo eyahlukeneyo kuhlalo-lwabiwo mali lonyaka	Uhlalo-lwabiwo mali olugqibeleleyo oluquka imithombo yenkxaso-mali luvunye liBhunga ngowama-31 kweyoMqungu ngo-2018	Uhlalo-lwabiwo mali olugqibeleleyo oluquka imithombo yenkxaso-mali lwenziwe ngowama-31 kweyoMqungu	Uhlalo-lwabiwo mali olugqibeleleyo oluquka imithombo yenkxaso-mali lwenziwe ngowama-31 kweyoMqungu	Uhlalo-lwabiwo mali olugqibeleleyo oluquka imithombo yenkxaso-mali lwenziwe ngowama-31 kweyoMqungu	Uhlalo-lwabiwo mali olugqibeleleyo oluquka imithombo yenkxaso-mali lwenziwe ngowama-31 kweyoMqungu	Uhlalo-lwabiwo mali olugqibeleleyo oluquka imithombo yenkxaso-mali lwenziwe ngowama-31 kweyoMqungu

Iinjongo ezinobuchule, izalathisi zokusebenza nempumelelo ekhoyo

Iinjongo ezinobuchule	Impumelelo ekhoyo 2017-2018	Iinjongo ecetyiweyo 2018-2019	Impumelelo ekhoyo 2018-2019	Ukuphambuka kwinjongo ecetyiweyo ukuya kwimpumelelo ekhoyo ngo-2018-2019	Ingcaciso yokuphambuka
Ukwandisa imithombo yengeniso yeziko.	Iphunyeziwe. Uhlahlo-lwabiwo mali olugqibeleleyo oluquka imithombo yenkxaso-mali lufakwe kuhlahlo-lwabiwo mali oluvunywe liBhunga ngeyoMqungu	Uhlahlo-lwabiwo mali olugqibeleleyo oluquka imithombo yenkxaso-mali ngowama-31 kweyoMqungu	Iphunyeziwe. Uhlahlo-lwabiwo mali olugqibeleleyo oluquka imithombo yenkxaso-mali lufakwe kuhlahlo-lwabiwo mali oluvunywe liBhunga ngeyoMqungu	Akukho	Ayikho

Izalathisi zokusebenza ezingundoqo, iinjongo ezicetyiweyo nempumelelo ekhoyo

Iziphumo: Iinjongo ezingundoqo	Iintshukumo zokufezekisa iinjongo	Izalathisi zokusebenza ezinokulinganiswa nezinobungqina 2018-2019	Impumelelo ekhoyo 2017-2018	Iinjongo ecetyiweyo 2018-2019	Impumelelo ekhoyo 2018-2019	Ukuphambuka: okucetyiweyo/ okukhoyo 2018-2019	Ingcaciso yokuphambuka
5.1 Ukwandisa imithombo yengeniso yodidi lwesibini	Ukumanya nokumilisela izicwangciso ezinabileyo zokwenza ingeniso yodidi lwesibini	IGosa eliyiNtloko yezeMali liza kumanya izicwangciso zengeniso yodidi lwesibini ukuze ziqukwe kuhlahlo-lwabiwo mali, ezikhoyo ngowama-31 kweyoMqungu qho ngonyaka	2	2	2	0	Ayikho
5.2 Utyalo-mali: inzala encumisayo kwimali etyaliweyo ukuqinisekisa ukuthobela uMgaqo-nkqubo woTyalo-mali	Ukutyal'imali kwiibhanka zeli ezinkulu ngenzala engaphezulu kweqondo lenzala elinganeno nge-5% kwiqondo lenzala yemali-mboleko	Ukuqinisekisa utyalo-mali kwiibhanka zeli ezinkulu ngenzala engaphezulu kweqondo lenzala elinganeno nge-5% kwiqondo lenzala yemali-mboleko	Yes	Yes	Yes	0	Ayikho
5.3 Ingeniso eyenziwe ngokuqeshisa izinto ngaphandle	Ukuvelisa nokumilisela isicwangciso sokuphumeza uhlahlo-lwabiwo mali olufunwayo olulungiselelwe ukuqeshisa ngeethiyetha ngaphandle.	Ukuqeshisa ngeethiyetha ngaphandle kuza kwenza umyinge wama-90% wengeniso emisiweyo qho ngonyaka	546%	90%	496%	406%	Iindawo zemiboniso zifunwe kakhulu kunoko bekulindlekile
5.4 Abaqeshi kwizakhiwo, iikhostyom, iisethi nezixhobo zeqonga	Ukuqinisekisa ukuba eli phulo loquqeshisa ngeeofisi, iikhostyom, iisethi kunye nezixhobo zeqonga liza kuzifezekisa iinjongo zemali ezimisiweyo	Ukuqeshisa ngeeofisi, iikhostyom, iisethi kunye nezixhobo zeqonga kuza kwenza umyinge wama-75% wengeniso emisiweyo rhoqo ngonyaka	85%	75%	76%	1%	Iiofisi, iikhostyom, iisethi kunye nezixhobo zeqonga zifunwe ngaphaya koko bekulindlekile xa kuthelekiswa neminyaka egqithileyo
5.5 Indawo yokubhukishela izihlalo	Ukuqinisekisa ukuba ingeniso efunyenwe kwintengiso yamatikiti iyahlangabezana neenjongo ezibekelwe imali ezimisiweyo	Iintengo yamatikiti iza kufumana umyinge wama-90% wengeniso ebekelwe imali qho ngonyaka	110%	90%	135%	45%	Indawo yokubhukishela izihlalo ifunwe ngaphaya koko bekulindlekile

Ukumanya ukusebenza nohlahlo-lwabiwo mali

	2018/2019			2017/2018		
	Imali	Ekhoyo	(Ngaphezulu)/ Nganeno	Imali	Ekhoyo	(Ngaphezulu)/ Nganeno
	R'000	R'000	R'000	R'000	R'000	R'000
Ukumanya ingeniso	16 449	17 754	(1 305)	14 140	15 549	(1 409)
Imali iyonke	16 449	17 754	(1 305)	14 140	15 549	(1 409)

4. ISISHWANKATHELO SEENKCUKACHA ZEMALI

4.1. Ukuqokelela ingeniso

	2018/2019			2017/2018		
	Imali	Ekhoyo	(Ngaphezulu)/ Nganeno	Imali	Ekhoyo	(Ngaphezulu)/ Nganeno
	R'000	R'000	R'000	R'000	R'000	R'000
Izibonelelo zemisebenzi	57 931	57 931	0	58 012	58 762	(750)
Izibonelelo eziyinkunzi	31 852	27 840	4 012	1 770	5 298	(3 528)
Ingeniso eyenziwe licandelo lezemali	6 502	7 036	(534)	7 104	7 389	(285)
Ingeniso yeemveliso	2 893	3 898	(1 005)	2 755	3 043	(287)
Ingeniso yokuqeshisa	471	577	(106)	449	476	(28)
Ukuqeshisa ngempahla enxitywayo xa kudlalwa eqongeni, eyokuhombisa kunye neyeqonga	608	321	287	579	437	142
Ingeniso yamaxesha thile	1 824	2 302	(478)	1 097	2 095	(998)
Eyestudiyo sokushicilela	360	58	302	221	173	47
Ingeniso yenkxaso-mali	3 791	3 562	230	1 936	1 936	0
Imali iyonke	106 232	103 525	2 707	73 922	79 609	(5 687)

4.2. Inkcitho yenkqubo nganyee

Igama lenkqubo	2018/2019			2017/2018		
	Imali	Ekhoyo	(Ngaphezulu)/ Nganeno	Imali	Ekhoyo	(Ngaphezulu)/ Nganeno
	R'000	R'000	R'000	R'000	R'000	R'000
Iinkonzo zobugcisa nezobuchwepheshe	39 314	37 334	1 980	36 833	29 542	7 291
Ulawulo lwequmrhu necandelo lezemali	15 432	15 241	192	13 595	13 016	578
Imicimbi yabasebenzi	2 918	3 389	(471)	2 567	1 917	651
Iinkonzo zenkxaso	30 001	24 575	5 426	27 164	23 676	3 488
Imali iyonke	87 665	80 539	7 126	80 160	68 151	12 009

Iprojekthi zeziseko zokusebenza	2018/2019			2017/2018		
	Imali	Ekhoyo	(Ngaphezulu)/ Nganeno	Imali	Ekhoyo	(Ngaphezulu)/ Nganeno
	R'000	R'000	R'000	R'000	R'000	R'000
Izixhobo zase-ofisini	725	642	83	890	760	130
Izixhobo zeekhompuyutha	553	433	120	346	652	(307)
Izakhiwo	43 128	27 364	15 764	19 999	11 125	8 874
Izixhobo zaseqongeni nezinye	3 327	344	2 983	2 510	1 069	1 441
Izithuthi				500	467	33
Imali iyonke	47 732	28 783	18 949	24 244	14 074	10 170

Indima C

ULAWULO

1. INTSHAYELELO

Ulawulo lwequmrhu lubandakanya iinkqubo ezikhokela indlela iPlayhouse Company eyalelwa, elawulwa nethatyathiswa ngayo uxanduva. Ukongeza kwizinto zomthetho eziyimfuneko ezilawula iPlayhouse Company, iPlayhouse Company ilawulwa nguMthetho woLawulo lweMali kaRhulumente (iPFMA) kunye neenqobo eziqulethwe yiNgxelo kaKing engoLawulo lwamaQumrhu.

Amaqela anoxanduva lolawulo lwequmrhu yiPalamente, isiGqeba esilawulayo kunye neGosa elixhuzul'imikhala yolawulo kweli ziko likarhulumente

I-Playhouse Company ayibanga nazo iindibano neKomiti eyongamelele imicimbi yeSebe lezoBugcisa neNkcubeko kulo nyakamali.

2. IBHUNGA

2.1. Imisebenzi yeBhunga

Imisebenzi yeBhunga yile:

- Ukuvelisa imigaqo-nkqubo;
- Ukugcina, ukulondoloza nokukhusela yonke impahla engenakuchukunyiswa nenokuchukunyiswa eselugcinweni lwePlayhouse Company okanye ebolekwe okanye ekuyeyePlayhouse Company;
- Ukwamkela, ukugcina, ukulondoloza nokukhusela yonke imiboniso kunye nengqokelela yayo yonke impahla enokuchukunyiswa ebekwe elugcinweni naselulawulweni lweli ziko phantsi kweCandelo le-10 loMthetho wamaZiko eNkcubeko 10(1);
- Ukunyusa ingxowa-mali yePlayhouse Company;
- Ukuphatha nokulawula iimali ezifunyanwa yiPlayhouse Company kwakunye nokusebenzisa ezi mali ukuhlawula iindleko ezinxulumene nokwenziwa kwwmisebenzi yeli ziko;
- Ukugcina ingxelo eyiyo yempahla yePlayhouse Company, kunye nokuthumelela uMlawuli Jikelele naziphi na iingxelo azifunayo ngokunxulumene nokugcina iincwadi zokunik'ingxelo ezifanelekileyo;
- Ukumisa nokufaka endaweni yoMthetho wamaZiko eNkcubeko injongo yeziko elibhengeziweyo, ngemvume yoMphathiswa; kunye
- Nokufezekisa iinjongo zeli ziko elibhengeziweyo ngokubanzi.

IBhunga liya kumisela iyure kunye nemiqathango eluya kuthi uluntu luyityelele phantsi kwayo iPlayhouse Company.

IBhunga linegunya lokuqesha abantu elibabona bekufanele ukwenza imisebenzi yePlayhouse Company. Imivuzo kunye nemigqaliselo nemiqathango yomsebenzi iya kumiselwa ngokungqinelana nangolungiselelo oluvunye nguMphathiswa ecebisana noMphathiswa weZemali.

Ukwakhiwa kweBhodi

Igama	Umhla wokuqeshwa	Umhla wokushiya esikhundleni	Izidanga	Ubuchule	Inani leentlanganiso ezizinyasiweyo	Umvuzo
Nkszn Hlengiwe Christophina Mgabadelo <i>Chairperson of Council</i>	1 December 2017		BA Social Work, Honours in Sociology	Inkonzo kaRhulumente noLawulo	7	23 398
Mnu Sathie Gounden	1 December 2017		CA (SA)	Ezemali, ulawulo lobungozi, Ulawulo lwequmrhu nophicotho-zincwadi	7	14 228
Nkszn Siphesihle Ndlela	1 December 2017		BA Communications (UNISA) Hotel Management (ND) Durban Hotel School	Unxibelelwano nabaxumi kunye namajelo eendaba, kwakunye neentengiso	5	10 598
Nkszn Linda Zama	1 December 2017		BA, LLB degrees	Umthetho, ulawulo nokuphatha	3	0
Mnu Abia Litheko	1 December 2017				7	14 100
Nkszn Thandeka Mngadi	1 December 2017		BA Humanities; MA Humanities	Ulawulo nolawulo lwemicimbi yabasebenzi	7	14 100
Mnu Bernard Jay	1 December 2017	29 September 2018	Arts Council of Great Britain Bursaries for Study: Theatre Administration in the UK; Children's Theatre in Leningrad, USSR	Ulawulo lwethiyetha, ukuvelisa imiboniso yasethiyetha, lintengiso, Ulawulo, Uthungelwano nabantu behlabathi liphela	2	4 480
Mnu Nkosinathi Mbele	11 December 2018			Uphuhliso lwentlalo nolwezoqoqosho, ingcali yempahla elukiweyo nobugcisa bonxibelelwano	2	8 068
Mnu Fezile Wetes	11 December 2018		BA degree; Advanced Diploma in Labour Law; Advanced Diploma in Management; Graduate Diploma in Company Direction; Bcom Honours in Human Resources Management		2	0
Nkszn Lebogang Matlala	11 December 2018		CA (SA)	Finance, risk management, corporate governance, audit, supply chain management and strategy	1	5 208
Nkszn Khwezi BL Kunene	22 May 2018		BSc Property Development	Uthelekelelo lobuninzi, Ulawulo lweekontraktha	7	0

Ikomiti zeBhodi

Members	Ikomiti yezemali neyokufumana izinto	Ikomiti yolawulo nophicotho-zincwadi	Ikomiti ejongene nemicimbi yabasebenzi	Ikomiti ejongene nobugcisa nokunyus'ingxowa-mali
Nkszn Hlengiwe Christophina Mgabadelo				
Mnu Sathie Gounden	✓		✓	
Nkszn Siphesihle Ndlela	✓			✓
Nkszn Linda Zama		✓		
Mnu Abia Litheko	✓		✓	
Nkszn Thandeka Mngadi			✓	✓
Mnu Bernard Jay	✓			✓
Mnu Nkosinathi Mbele		✓		
Mnu Fezile Wetes			✓	✓
Nkszn Khwezi BL Kunene	✓		✓	
Nkszn L Matlala	✓			✓

3. ULAWULO LOBUNGOZI

IPlayhouse Company inomgaqo-nkqubo wolawulo lobungozi okhokela inkqubo yokwalatha nokulawula ubungozi. Lo mgaqo-nkqubo uyaphengululwa rhoqo ngonyaka. Ulawulo lobungozi yinkqubo apho iGosa elixhuzul'imikhala yolawulo ePlayhouse, iGosa eliyiNtloko yezeMali kunye nabanye abaphathi abayintloko bathi balathe baze bachaze ubungozi obukhoyo nobuvela rhoqo kushishino, kwezemali nakumsebenzi owenziwa liziko baze kananjalo baqulunqe iindlela ezifanelekileyo nezingangeni nzulu epokothweni zokukhawulelana nobu bungozi, bekwenza oku rhoqo ngenjongo nangenkuthalo.

Ulawulo lobungozi olunamandla luyimfuneko kakhulu ePlayhouse Company khon' ukuze eli ziko lizalisekise igunya lalo lokunika iinkonzo ezilindelwe luluntu kunye nelokusebenza kwalo okulindelwe liSebe lezoBugcisa neNkcubeko.

Irejista yobungozi iyaphengululwa rhoqo ngonyaka emva kwendibano yabaphathi nawo onke amaqela olawulo anxulumene nokwalathwa kobungozi. Irejista yobungozi isetyenziselwa ukuhlahl'indlela yesicwangciso seminyaka emithathu sophicotho-zincwadi lwangaphakathi esiphengululwa size siphunyezwe yiKomiti yoPhicotho-zincwadi noLawulo kunye neBhunga.

Inkqubela-phambili yeenguqu kulawulo lobungozi obalathiweyo iqwalaselwa kwiindibano zabaphathi ezibanjwa qho ngenyanga.

4. ICANDELO LOLAWULO LWANGAPHAKATHI

Ulawulo lwangaphakathi luxanduva lomphathi ngamnye. Sinemigaqo-nkqubo neenkqubo esizisebenzisayo ukumisela ulawulo lwangaphakathi yaye imigaqo-nkqubo yethu iphengululwa rhoqo ngonyaka ukuqinisekisa ukuba ihambisana nemithetho nemimiselo ekhoyo nelawulayo. Abaphathi baphucula ulawulo lwangaphakathi besebenzisa iziphumo zolawulo lwangaphakathi ezivela kubaphicothi-zincwadi.

5. UPHICOTHO-ZINCWADI LWANGAPHAKATHI

IPlayhouse Company inoMqulu woPhicotho-zincwadi lwaNgaphakathi ophengululwayo rhoqo ngonyaka. Lo Mqulu woPhicotho-zincwadi lwaNgaphakathi waveliswa ukuze uchaze ubume beziko, iinjongo, igunya noxanduva lwecandelo lophicotho-zincwadi lwangaphakathi olufunyanwa ngaphandle. Uphicotho-zincwadi lwangaphakathi luqhutywa ngamagatya eCandelo le-3.2 leMimiselo kaNondyebo kunye neCandelo lama-38(1)(a)(i) nelama-76(4)(e) lePFMA kwaye ludlala indima ebalulekileyo kwiinzame zokuqinisa ulawulo lwePlayhouse Company.

Injongo engundoqo yophicotho-zincwadi lwangaphakathi ePlayhouse Company kukunika ingqiniseko ezimeleyo kunye neengcebiso ngeenkqubo zolawulo lwangaphakathi, iinkqubo zolawulo lobungozi kunye nezolawulo, kwakunye nemisebenzi nokusebenza kwePlayhouse Company ngokunxulumene nemithetho, imimiselo kunye nemigaqo-nkqubo elawulayo.

Nasi isishwankathelo seemfanelo eziqunyelwe kulo nyaka-mali ngokuhambisana nesicwangciso esivunyiweyo seziganeko zophicotho-zincwadi lwangaphakathi:

1. Ukuhlolwa kwee-CAAT ngokunxulumene okufunyanwa kwezinto nomqulu wemivuzo
2. Uphengululo lolawulo lwempahla yexabiso
3. Uphengululo lwemicimbi yabasebenzi
4. Ezempilo nokhuseleko emsebenzini
5. Uphengululo lweenkcukacha zokusebenza
6. Uphengululo lolawulo lwecandelo lokufumana nokunika iinkonzo neziniki-maxabiso

6. IKOMITI YOPHICOTHO-ZINCWADI NOLAWULO

IPlayhouse Company inoMqulu weKomiti yoPhicotho-zincwadi noLawulo ophengululwayo rhoqo ngonyaka.

Eyona njongo engundoqo yeKomiti yoPhicotho-zincwadi noLawulo kukuncedisa iBhunga ekwenzeni imisebenzi yalo enxulumene nokukhusela impahla yexabiso, ukusebenzisa iinkqubo ezifanelekileyo, inkqubo yolawulo kunye nokulungisa iingxelo zemali ezichanekileyo ngokuthobela zonke iimfuno zemithetho elawulayo kunye nemigangatho yokunika ingxelo.

Imisebenzi yeKomiti yoPhicotho-zincwadi noLawulo yile ilandelayo:

1. Ukongamela, ukulungelelanisa kunye nokuthelekelela ixabiso loPhicotho-zincwadi olwenziwa ngabaphicothi-zincwadi bangaphandle nabangaphakathi kweli ziko;
2. Ukugcina unxibelelwano oluvulelekileyo kwiBhunga ngokubamba iintlanganiso rhoqo, ukuqinisekisa ukuba abaphicothi-zincwadi bangaphakathi nabangaphandle babelana ngezimvo nolwazi lwabo kwiziko kwanokuqinisekisa igunya noxanduva abanalo;
3. Ukusebenza njengegqiza elizimeleyo nelingathabathi cala ukuze liphonononge iinkcukacha zemali elizininikwa ngabaphathi beziko;
4. Ukuphonononga ukufaneleka kolawulo olukhoyo lweengxelo nolokunika iingxelo;
5. Nokuvula indlela yonxibelelwano phakathi kwabaphicothi-zincwadi bangaphakathi nabangaphandle kunye neBhunga.

7. UKUTHOBELA IMITHETHO NEMIMISELO

NgokweCandelo lesi-4 loMthetho wamaZiko eNkcubeko, iPlayhouse Company iliqumrhu kwaye iPlayhouse Company, iBhunga kunye nawo onke amalungu alo kufuneka bathobele imithetho-siseko yolawulo lwequmrhu olunobulungisa kunye nayo yonke imithetho nemimisele elawulayo.

Abaphathi bePlayhouse Company banika ingxelo ngokuthotyelwa kwemithetho nemimisele rhoqo ngekota. Kuqulunqwa uluhlu olulandelwayo lwePFMA kwaye nakuphi na ukungathotyelwa kwalo kuxelwa kwiBhunga nakwiikomiti eziphantsi kwalo.

8. UBUQHOPHOLOLO NORHWAPHILIZO

IPlayhouse Company inesicwangciso sokuthintela ubuqhophololo esiphengululwa rhoqo ngonyaka.

Esi sicwangciso sigqala amaphulo asisiseko okuthintela ubuqhophololo norhwaphilizo ePlayhouse Company.

Iinjongo ezingundoqo zesi sicwangciso zezi zilandelayo:

1. Ukunika izikhokelo zokuthintela, ukubhaqa nokuxela izenzo zobuqhophololo;
2. Ukudala umkhwa okhuthaza bonke abasebenzi kunye nabathathi nxaxheba ukuba bathi gqolo ukwenza izinto ngokusesikweni xa besebenza egameni lePlayhouse Company;
3. Ukukhuthaza bonke abasebenzi nabathathi nxaxheba ukuba basebenzele ukulithintela nokulibona ifuthe elikhoyo okanye elinokwenziwa bubuqhophololo ePlayhouse Company;
4. Ukukhuthaza bonke abasebenzi kunye nabathathi nxaxheba ukuba baxeke xa bekrokrela izenzo zobuqhophololo bengenaloyiko lokutshutshiswa okanye ukumangalelwa;
5. Kunye nokunika ugqaliso lokwaba ukunikwa kwengxelo kunye negunya.

9. UKUNCIPHISA IMBAMBANO YEMIDLA

Abaphathi nabasebenzi becandelo lezemali bazalisa ifomu yokubhengeza imidla yabo rhoqo ngonyaka. Abaphathi nabasebenzi bayakhuthazwa ukuba bayihlaziye le fomu rhoqo xa kukho iinguqu ezivelayo kwiimeko zabo.

IPlayhouse Company inoMgaqo-nkqubo weMikhwa esesikweni nokhokela abasebenzi kwiimeko apho kunokubakho khona imbambano yemidla.

10. UMGAQO WOKUZIPHATHA

I-Playhouse Company inoMgaqo-nkqubo weMikhwa esesikweni kunye noMgaqo-nkqubo woMgaqo woKuziphatha ekhokela abasebenzi kwindlela amabaziphathe ngayo emsebenzini.

UMgaqo-nkqubo woMgaqo woKuziphatha uxhonywe kuzo zonke iibhodi zezaziso ezikhoyo ePlayhouse Company. Ukuze abasebenzi bakwazi ukwenza isigqibo ngentshukumo emayithatyathwe nokumisela izinto eziyimikhwa esesikweni kufuneka banike ingqalelo baze bakhokelwe zezi zinto zilandelayo:

- Imigaqo-nkqubo yeli ziko;
- Imithetho yelizwe;
- Indlela yokuziphatha kunye nemikhwa eyamkelekileyo jikelele;
- Kunye nezimilo neenqobo zabo ezisemgangathweni.

Xa kukho nasiphi na isenzo esiphambukayo kwezi zinto zibalulwe apha ngasentla eso senzo siya kuthi sithatyathwe njengokuziphatha gwenxa.

Xa umsebenzi ethe wophula uMgaqo-nkqubo weMikhwa esesikweni okanye uMgaqo-nkqubo woMgaqo woKuziphatha kuya kuthi kulandelwe inkqubo eqhelekileyo yezikhalazo neyoluleko yecandelo lemicimbi yabasebenzi.

11. IMIBA YEZEMPILO, EYOKHUSELEKO KUNYE NEYOKUSINGQONGILEYO

Rhoqo ngonyaka iPlayhouse Company yenza uvavanyo lokuthotyelwa kwemimiselo yezempilo nokhuseleko. Isiphumo solu vavanyo siso esazisa iPlayhouse Company ngeendawo ezifuna ukuphuculwa nokumilisela.

Ukuthobela imimiselo yezempilo neyokhuseleko ngomnye umba okwizalathisi eziphambili zokusebenza ezikwisiwangciso sokusebenza sonyaka sikaManejala weeNkonzo zeNkxaso.

IPlayhouse Company iyithobela ngokupheleleyo yonke imimiselo yezempilo neyokhuseleko.

12. UXANDUVA LWASEKUHLALANI

Injongo yePlayhouse Company kukuphucula, ukukhuthaza nokulondoloza ubugcisa obuboniswayo ngokuthi yenze ize ibonise imiboniso eyonwabisayo nefundisayo, kwaye iboniswe kwiindidi ngeendidi zababukeli.

IPlayhouse Company iyithabatha le njongo yayo njengoxanduva enalo eluntwini nasekuhlaleni.

Inkqubo yezobugcisa ePlayhouse Company ikulungele ukwenza umsebenzi wayo woxanduva lwasekuhlaleni.

Phakathi kweenkqubo ezilungiselelwe uxanduva lwasekuhlaleni, kusetyenziswa iqonga elijikelezayo ukuhambisa iinkqubo zokufikelela eluntwini kwiindawo ezisemaphandleni apho abantu bengakwazi ukufikelela kwithiyetha ukuze babone imidlalo yeqonga. Abanye kwaba bantu bayibona okokuqala ngqa ezimbalini imiboniso edlalwa ngqo kwaye loo nto ibavuyisa kakhulu.

Iqonga elijikelezayo likwasetyenziswa ukubonisa imiboniso yemisebenzi yezikolo kwiindawo ezisemaphandleni. Ngabantwana besikolo abangaphaya kwama-74 000 abafumene ithuba lokubona umboniso ngqo wemisebenzi yesikolo eqongeni. Mhlawumbi aba bantwana babengasoze balifumane eli thuba lokubukela umboniso weqonga.

13. INGXELO YEKOMITI YOPHICOTHO-ZINCWADI

IKomiti yoPhicotho-zincwadi noLawulo (iKomiti) ithi thaca ingxelo yayo yonyaka-mali ophele ngomhla wama-31 kweyoKwindla ngo-2019.

Amalungu eKomiti yoPhicotho-zincwadi noLawulo neentlanganiso ezibanjiweyo

Le Komiti inamalungu amahlanu nadweliswe apha ngezantsi kwaye kufuneka idibane ubuncinane izihlandlo ezine ngonyaka ngokumisela kwemiqathango yayo evunyiweyo. Ziintlanganiso ezine ezibanjwe yile komiti kulo nyaka.

Igama	Izidanga	Ngaphakathi okanye ngaphandle	Umhla wokuqeshwa
Judge Leona Valerie Theron	Master of Law, Bachelor of Laws and Bachelor of Arts	Ngaphandle – uSihlalo weKomiti yoPhicotho-zincwadi noLawulo	25 kuCanzibe 2018
Nkszn Charmaine Jugnarayan	CA (SA), RA	Ngaphandle	25 kuCanzibe 2018
Mnu Roger Ashe		Ngaphandle	25 kuCanzibe 2018
Nkszn Linda Zama	BA, LLB degree	Ngaphakathi	23 EyoMdumba 2018
Mnu Nkosinathi Mbele		Ngaphakathi	25 kweyoMqungu 2019

Uxanduva lweKomiti yoPhicotho-zincwadi noLawulo

Le Komiti ivakalisa ukuba ilwenzile uxanduva lwayo olumiselwe kwiCandelo lama-38 (1)(a) loMthetho woLawulo lweMali kaRhulumente woku-1 ka-1999 kunye noMmiselo kaNondyebo wesi-3.1. Kwakhona, le Komiti inika ingxelo yokokuba yamkele imiqathango esesikweni efanelekileyo njengomqulu wayo woPhicotho-zincwadi noLawulo, imicimbi yayo iyiphathe ngokuhambisana nalo mqulu kwaye ilufezekisile uxanduva lwayo oluqulethwe ngulo mqulu. Lo mqulu uphononongwa rhoqo ngonyaka uze wamkelwe yiKomiti usakuba uvunywe liGunya elixhuzul'imikhala yolawulo kwiziko.

Uphicotho-zincwadi lwangaphakathi

IKomiti ilungelelanisa ize yongamele imisebenzi yophicotho-zincwadi lwangaphakathi. Ukwenza oku kunceda iKomiti ikwazi ukunika ingxelo ngokusebenza ngokukuko kophicotho-zincwadi lwangaphakathi. Uphicotho-zincwadi lwangaphakathi luthatyathwe ngaphandle kwaye belusebenza kulo nyaka-mali uphononongwayo.

IKomiti itha yaqwalasela irejista yobungozi ehlaziyiweyo ngokwenkqubo-sikhokelo yolawulo lobungozi kunye nemigaqo-nkqubo eyamkelwe liGunya elixhuzul'imikhala yolawulo. IKomiti isiphonononge yaze yasivuma isicwangciso sophicotho-zincwadi lwangaphakathi sobungozi seminyaka emithathu.

IKomiti yanelisekile ngamandla okusebenza kwecandelo lophicotho-zincwadi lwangaphakathi.

Amandla okusebenza ngokukuko kolawulo lwangaphakathi

IKomiti ivavanye ukusebenza ngokukuko kolawulo lwangaphakathi yaza yaphonononga inkqubo yovavanyo lobungozi ngokwenza oku kulandelayo:

- Izimase indibano yokuncazelana ngolwazi yovavanyo lobungozi nabo bonke abathathi-nxaxheba abaphambili;
- Ithabathe ukusebenza ngokukuko kweenkqubo zeziko zolawulo lobungozi njengento eqhubekayo eyenziwa ngabaphathi;
- Iqwalasele inkqubo yokulandelela zonke izinto ezifuna ukuphandwa ezifunyenwe ngabaphicothi-zincwadi ukuqinisekisa ukuba ziyalungiswa ngokupheleleyo;
- Ifune isiqinisekiso kubaphathi sokokuba ikho into eyenziwayo kwimiba enxulumene naleyo ikhankanywe ngabaphicothi-zincwadi; kwaye
- Inike abaphathi neGunya elixhuzul'imikhala yolawulo isikhokelo neengcebiso zokuqinisa iinkqubo zokulawula ubungozi kunye neenkukacha zokusebenza xa kuphononongwa iingxelo zekota

IKomiti iphonononge iingxelo zophicotho-zincwadi lwangaphakathi, yafumanisa apho iziko libuthathaka khona yaza yaqwalasela ukufaneleka kweempendulo zabaphathi zokuqinisekisa ukuba siyathotywa isantya sokuvela kobungozi kwanokuba imeko yolawulo iyaqhubeka nokuphucuka.

IKomiti yanelisekile yinto yokokuba iPlayhouse Company ithe gqolo ukugcina umgangatho ofanelekileyo wolawulo lwangaphakathi.

IKomiti iyangqinelana nabaphicothi-zincwadi ngokuthi ulawulo lwangaphakathi lusebenza ngokufanelekileyo kwaye luthembekile yaye imiba exelwe ngabaphicothi-zincwadi bangaphakathi kulo nyaka ayibonisanga kusilela kuphathekayo.

Ulawulo lweengxelo zenyanga/zekota ezithunyelwa ngokuyalela kwePFMA kunye noMthetho woKwahlulwa kweNgeniso lube lolwanelisayo ngokweziphumo zengqwalasela nezophicotho-zincwadi lwangaphakathi.

Ingxelo yaphakathi enyakeni yabaphathi kunye neyenyanga/eyekota

IPlayhouse Company izithumele ngexesha iingxelo zenyanga kwiFINCO nakwiKomiti yoPhicotho-zincwadi noLawulo kwaye ithumele iingxelo zekota kwiSebe lezoBugcisa neNkcubeko njengoko iyalela njalo iPFMA.

Uphononongo lweengxelo zemali

IKomiti:

- Iphonononge iingxelo zekota kuquka iingxelo zemali ukuqinisekisa ukungqinelana nokuchaneka kweenkcukacha;
- Ijonge ukufaneleka, ukwamkelwa nokusetyenziswa ngokungqinelanayo kwengxelo yemikhwa eyamkeleke jikelele yokunika ingxelo yaseMzantsi Afrika eyamkelwa liGunya elixhuzul'imikhala yolawulo kwiziko;
- Ihlole umgangatho nokufakwa ngexesha kweenkcukacha zemali enazo iKomiti ukuze ikwazi ukongamela apha ekuhambeni konyaka;
- Iphonononge iingxelo zemali zePlayhouse Company zonyaka ophela ngomhla wama-31 kweyoKwindla ngo-2019 kwaye yanelisekile yinto yokokuba ayathotyelwa amagatya oMthetho woLawulo lweMali kaRhulumente kunye nengxelo yemikhwa eyamkeleke jikelele yokunika ingxelo yaseMzantsi Afrika;
- Iphonononge ingxelo yabaphathi yoMphicothi-zincwadi Jikelele kunye nempendulo yabaphathi; kwaye
- Iphonononge ingxelo yoMphicothi-zincwadi Jikelele yaza yaphawula okokuba iingxelo zemali neenkcukacha zokusebenza azibanga nayo imiba efuna ukuphandwa.

Ingxelo yoMphicothi-zincwadi

IKomiti inemincili ukuvakalisa ukuba iCompany ifumene ingxelo yomphicothi-zincwadi ecocekileyo nengenasikhwasilima.

IKomiti iyangqinelana kwaye iyakwamkela ukuqukumbela koMphicothi-zincwadi kwiingxelo zemali zonyaka kungoko iKomiti inoluvo lokokuba iingxelo zemali zonyaka eziphicothiweyo mazamkelwe kwaye zifundwe kunye nengxelo yoMphicothi-zincwadi Jikelele.

IKomiti ithabatha eli thuba ukuvuyisana neBhunga kunye nabaphathi beziko ngemigudu yabo nokusebenza kwabo ngokuzinikela ukuze bafumane ingxelo yoMphicothi-zincwadi Jikelele ecocekileyo nengenasikhwasilima iminyaka emihlanu ilandelelana, kwaye ithanda ukuvakalisa ilizwi lombulelo ngenkxaso yabo kunye neengxoxo ezineziqhamo ezihle neKomiti.



Judge Leona Valerie Theron

uSihlalo weKomiti yoPhicotho-zincwadi noLawulo

Indima D

ULAWULO LWEMICIMBI YABASEBENZI

1. IINKCUKACHA-MANANI ZOBONGAMELI BEMICIMBI YABASEBENZI

Iindleko zabasebenzi kwinkqubo nganye

Inkqubo	Inkcitho yeziko iyonke (R'000)	Inkcitho yabasebenzi (R'000)	Inkcitho yabasebenzi eyiphesenti yenkitho iyonke (R'000)	Inani labasebenzi	Ilavareji yeendleko zabasebenzi zomsebenzi ngamnye (R'000)
-	104 010	37 915	36%	84	451

Iindleko zabasebenzi ngokwamabakala emivuzo

Isikhundla	Inkcitho yabasebenzi (R'000)	Iindleko zabasebenzi eziyiphesenti yenkitho iyonke (R'000)	Inani labasebenzi	Ilavareji yeendleko zabasebenzi zomsebenzi ngamnye (R'000)
Abaphathi abaphezulu	2 168	6%	1	2 168
Abaphathi abayintloko	1 490	4%	1	1 490
Abasebenzi abanobuchule nabaqeqeshiweyo	7 286	21%	11	662
Abasebenzi abanobuchule	12 097	35%	34	356
Abasebenzi abanobuchule obungagqibelelanga	11 651	34%	37	315
Abasebenzi abangenabuchule			0	
Abasebenzi Bebonke	34 692	100%	84	412

Iindleko zoqeqesho

Icandelo/Icandelo lomsebenzi	Inkcitho yabasebenzi (R'000)	Iindleko zoqeqesho (R'000)	Iindleko zoqeqesho eziyiphesenti yeendleko zabasebenzi	Inani labasebenzi abaqeqeshiweyo	Ilavareji yeendleko zoqeqesho zomsebenzi ngamnye
	37 915	307	1	76	4

Ingqesho nezithuba ezivulekileyo

Inkqubo	2015/2016 Inani labasebenzi	2016/2017 Izithuba eziphunyeziweyo	2016/2017 Inani labasebenzi	2016/2017 Izithuba ezivulekileyo	Inani eliyiphesenti lezithuba ezivulekileyo
-	85	93	84	9	9.6%

Inkqubo	2015/2016 Inani labasebenzi	2016/2017 Izithuba eziphunyeziweyo	2016/2017 Inani labasebenzi	2016/2017 Izithuba ezivulekileyo	Inani eliyiphesenti lezithuba ezivulekileyo
Abaphathi abaphezulu	1	1	1	0	0
Abaphathi abayintloko	1	1	1	0	0
Abasebenzi abanobuchule nabaqeqeshiweyo	9	12	11	1	8.3%
Abasebenzi abanobuchule	33	37	34	3	8.1%
Abasebenzi abanobuchule obungagqibelelanga	41	42	37	5	11.9%
Abasebenzi abangenabuchule	0	0	0	0	0
Abasebenzi Bebonke	85	93	84	9	9.6%

Iinguqu kwinqesho

Salary Band	Ingqesho ekuqaleni kwexesha	Abaqeshiweyo	Abaphelelweyo	Ingqesho ekupheleni kwexesha
Abaphathi abaphezulu	1	0	0	1
Abaphathi abayintloko	1	0	0	1
Abasebenzi abanobuchule nabaqeqeshiweyo	9	2	0	11
Abasebenzi abanobuchule	33	2	1	34
Abasebenzi abanobuchule obungagqibelelanga	41	1	5	37
Abasebenzi abangenabuchule	0	0	0	0
Abasebenzi bebonke	85	5	6	84

Izizathu zokushiya kwabasebenzi

Isizathu	Inani	Iphesenti yenani labasebenzi abashiyayo bebonke
Ukufa	0	0
Ukushiya esikhundleni	2	33.33%
Ukugxothwa	0	0
Umhlala-phantsi	4	66.66%
Impilo enkenenkene	0	0
Ukuphela kwesivumelwano	0	0
Ezinye	0	0
Izizathu zizonke	6	100%

Unxulumano lwabasebenzi: Ukuziphatha gwenxa kunye nenkqubo yoluleko

Uhlobo loluleko	Inani
Isilumkiso esenziwa ngomlomo	0
Isilumkiso esibhaliweyo	2
Isilumkiso sokugqibela esibhaliweyo	1
Ukugxothwa	0

Okujoliswa kuko kumakulinganwe kunye nobume bobulungisa kwingqesho

Izikhundla	AMADODA							
	Antsundu		Amakhaladi		Amandiya		Amhlophe	
	Akhoyo	Inani elifunwayo	Akhoyo	Inani elifunwayo	Akhoyo	Inani elifunwayo	Akhoyo	Inani elifunwayo
Abaphathi abaphezulu	0	0	0	0	0	0	0	0
Abaphathi abayintloko	0	0	0	0	1	1	0	0
Abasebenzi abanobuchule nabaqeqeshiweyo	3	3	0	1	2	1	1	1
Abasebenzi abanobuchule	19	20	1	1	2	2	2	3
Abasebenzi abanobuchule obungagqibelelanga	18	22	0	0	4	4	1	1
Abasebenzi abangenabuchule	0	0	0	0	0	0	0	0
Abasebenzi Bebonke	40	45	1	2	9	8	4	5

Izikhundla	AMABHINQA							
	Antsundu		Amakhaladi		Amandiya		Amhlophe	
	Akhoyo	Inani elifunwayo	Akhoyo	Inani elifunwayo	Akhoyo	Inani elifunwayo	Akhoyo	Inani elifunwayo
Abaphathi abaphezulu	1	1	0	0	0	0	0	0
Abaphathi abayintloko	0	0	0	0	0	0	0	0
Abasebenzi abanobuchule nabaqeqeshiweyo	3	2	0	0	1	1	1	1
Abasebenzi abanobuchule	8	9	1	1	0	0	1	1
Abasebenzi abanobuchule obungagqibelelanga	8	10	2	1	4	4	0	2
Abasebenzi abangenabuchule	0	0	0	0	0	0	0	0
Abasebenzi Bebonke	20	22	3	2	5	5	2	4

Izikhundla	ABASEBENZI ABANEZIPHENE EMZIMBENI			
	Amadoda		Amabhinqa	
	Akhoyo	Inani elifunwayo	Akhoyo	Inani elifunwayo
Abaphathi abaphezulu	0	0	0	0
Abaphathi abayintloko	0	0	0	0
Abasebenzi abanobuchule nabaqeqeshiweyo	0	0	0	0
Abasebenzi abanobuchule	0	0	0	0
Abasebenzi abanobuchule obungagqibelelanga	0	0	0	0
Abasebenzi abangenabuchule	0	0	0	0
Abasebenzi Bebonke	0	0	0	0

Indima E

IINKCUKACHA ZEMALI

1. INGXELO YOKUTHABATH'UXANDUVA KUNYE NOKUQINISEKISA UKUCHANEKA KWENGXELO YONYAKA

IBhunga linoxanduva lokulungisa iingxelo zemali zonyaka zePlayhouse Company kwakunye nolokugweba okwenziwa kwezi nkukacha.

IBhunga linoxanduva lokusungula nokumilisela inkqubo yolawulo lwangaphakathi elungiselelwe ukunika ingqiniseko enengqiqo ngokuphathelele kubulungisa nokuthembeka kweengxelo zemali zonyaka.

Ngokoluvo lwam, iingxelo zemali ziyibonisa ngokufanelekileyo imisebenzi yePlayhouse Company yonyaka-mali ophela ngomhla wama-31 kweyoKwindla ngo-2019.

Kuye kusetyenziswane noMphicothi-zincwadi Jikelele ukuze avakalise uluvo lwakhe oluzimeleyo ngeengxelo zemali zonyaka zePlayhouse Company.

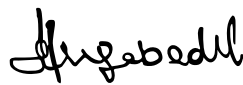
Iingxelo zemali zonyaka zePlayhouse Company zonyaka ophela ngomhla wama-31 kweyoKwindla ngo-2019 ziphicothwe nguMphicothi-zincwadi Jikelele kwaye ingxelo yazo inikwe kwiphepha 42.

Iingxelo zemali zonyaka zePlayhouse Company ezibalulwe kwiphepha 45 ukusa kwiphepha 68 zivunyiwe.



Nkszn Linda Bukhosini

INgqonyela kwanoMlawuli wezoBugcisa



Nkszn Hlengiwe Christophina Mgabadi

USihlalo weBhunga

2. INGXELO YENQONYELA KWANOMLAWULI WEZOBUGCISA

Ukusebenza kwemali

Ingeniso

Ingeniso iyonke inyuke ngomyinge wama-29% isuka kwizigidi ezingama-R79 yaya kuthi xha kwizigidi ezili-R102 zeerandi.

- Oku kunyuka kubangelwe kukunyuka kwengeniso eyinkunzi enakanwa ngokweGRAP23 GRAP 23 – Ingeniso evela kwintengiselwano engeyiyo eyolwananiso neeRhafu.

Iindleko zokusebenza

Iindleko zokusebenza zinyuke ngomyinge we-14% ukusuka kwizigidi ezingama-R91 ukusa kwizigidi ezili-R104 zeerandi.

- Oku kunyuka kubangelwe kukunyuka kweendleko zokuhla kwexabiso nokuhlawulwa kwamatyala, iindleko zabasebenzi neendleko zemveliso.

Intsalela yonyaka

Intsalela ebalelwa kwizigidi ezi-R4.9 zeerandi kunyaka ka-2019 ibangelwe kukunyuka kwengeniso eyinkunzi ngokungqinelana neGRAP 23 - Ingeniso evela kwintengiselwano engeyiyo eyolwananiso neeRhafu.

Ubume bezemali

Uphela unyaka ibonisa imeko encumisayo yobume bezimali iPlayhouse Company.

- Ukunyuka kwempahla yexabiso elungiselelwe ixesha elide ngezigidi ezili-R10 zeerandi kubangelwe kukuthengwa kweelifti ezintsha zeqonga le-opera.
- Impahla yexabiso esetyenziswayo ihle ngezigidi ezi-1.6 zeerandi R6 kwaye oku kubangelwe kukuhla kwemali eziinkozo nenye imali elingana nayo.
- Amatyala exesha elide anyuke ngezigidi ezi-R4.4 zeerandi. Oku kubangelwe kukunyuka kwengeniso erhoxisiweyo
- Amatyala angoku ehle nge-R0.4 yezigidi zeerandi. Oku kudalwe kukuhla kweentengiso nezinye izinto ezifunyanwayo.

Imali engenayo

Imali eziinkozo nenye imali elingana nayo ihle ngezigidi eziyi-R1.8 zeerandi ukusuka kwizigidi ezingama-R89.8 ukusa kwezingama-R88. Imali engeniswa yimisebenzi ezizigidi zeerandi ezingama-R27 ilinganiswe ngemali engeniswa lutyalo-mali ezizigidi zeerandi ezingama-R28.8.

Inkqubo-sikhokelo yokuphatheka

IBhunga libambisene nabaphicothi-zincwadi bangaphandle limisele inkqubo-sikhokelo yalo yemigangatho eyamkelekileyo yokuphatheka nokubaluleka ngolu hlobo:

- Ingeniso nenkcitho – 1%
- Impahla yexabiso namatyala – 3%

Ukuphatheka kubalwa ngokwale nkqubo-sikhokelo ingentla apha, kodwa kukho iimeko ezifuna ukuphatheka okungqongqo uze umgangatho ulungelelaniswe ngokufanelekileyo. Maxa wambi kuye kusetyenziswe indlela yobulumko xa kumiselwa le migangatho yokuphatheka.



Nkszn Linda Bukhosini
INgqonyela kwanoMlawuli wezoBugcisa

3. INGXELO EYENZIWA NGUMPHICOTHI-ZINCWADI JIKELELE NGEPLAYHOUSE COMPANY EPALAMENTE

Ingxelo yoPhicotho-zincwadi lweengxelo zemali

Uluvo

1. Ndenze uphicotho-zincwadi lweengxelo zemali zePlayhouse Company ezikwiphepha lama-45 ukusa kwelama-68 eziquka ubume beengxelo zemali ngomhla wama-31 kweyoKwindla ngo-2019, ingxelo yokusebenza kwemali, ingxelo yeenguqu kwimpahla yexabiso eyintsalela, ingxelo yokungena kwemali kunyaka ophelayo kwakunye namanqaku eengxelo zemali, kuquka nesishwankathelo semigaqo-nkqubo ebalulekileyo yocwangciso-mali.
2. Ngokoluvo lwam iingxelo zemali zibubonisa ngobulungisa kuzo zonke iinkalo eziphathekayo ubume bezemali bePlayhouse Company ngomhla wama-31 kweyoKwindla ngo-2019, kunye nokusebenza kwemali nokungena kwemali kunyaka ophelayo ngokungqinelana neMigangatho yaseMzantsi Afrika yeMikhwa eyamkelekileyo Jikelele yoCwangciso-mali (iMigangatho yeGRAP) kunye neemfuno zoMthetho woLawulo lweMali kaRhulumente waseMzantsi Afrika, 1999 (uMthetho woku- 1 ka-1999) (IPFMA).

Isiseko soluvo

3. Olwam uphicotho-zincwadi ndilwenze ngokungqinelana neneMigangatho yeHlabathi yoPhicotho-incwadi (i-ISA). Uxanduva endinalo phantsi kwale migangatho luchazwa ngokunabileyo kwisahluko sale ngxelo yophicotho-zincwadi esijongene noxanduva lomphicothi-zincwadi xa ephicotho iingxelo zemali.
4. Andinabudlelwane neli ziko ngokungqinelana necandelo lama-290 nelama-291 leKhowudi yeenqobo ezisesikweni zabacwangcisi-mali abanobuchule yeBhodi yeMigangatho esesikweni yeHlabathi (ikhowudi iye-IESBA), indima yoku-1 neyesi-3 yeKhowudi yeenqobo ezisesikweni zabacwangcisi-mali abanobuchule yeBhodi yeMigangatho esesikweni yeHlabathi (kuquka iMigangatho yokuZimela yeHlabathi) nezinto eziyimfuneko ezisesikweni eziyimfanelo kuphicotho-zincwadi endilwenzayo eMzantsi Afrika. Ndiluzalisekile nolonye uxanduva lwam lweenqobo ezisesikweni ngokungqinelana nezi zinto eziyimfuneko kunye neKhowudi ye-IESBA.
5. Ndikholelwa ekubeni ubungqina bophicotho-zincwadi endibufumeneyo banele yaye bufanelekile ukuze bukwazi ukundinika isiseko soluvo lwam.

Uxanduva lweBhunga kuquka igunya elithabatha uxanduva kwiingxelo zemali

6. Ibhunga, kuquka igunya elithabatha uxanduva linoxanduva lokulungisa iingxelo zemali nokuzinika ngobulungisa ngokungqinelana neMigangatho yeGRAP yaseMzantsi Afrika kunye nezinto eziyimfuneko zePFMA, noxanduva lolawulo lwangaphakathi olubonwa ligunya elithabatha uxanduva njengoluyimfuneko ukuze kulungiswe iingxelo zemali ezingenamposiso, nokokuba

yenziwe ngobuqhinga okanye ngempazamo.

7. Uxanduva lwegunya elithabatha uxanduva xakulungiswa iingxelo zemali kukuphonononga ukuba iPlayhouse Company inako kusini na ukuqhubeka njengeshishini eliqhubekayo lize lidalule imiba enxulumene neshishini eliqhubekayo lisebenzisa isiseko socwangciso-mali seshishini eliqhubekayo ngaphandle kwaxa igunya elixhuzul'imikhala yolawulo linenjongo yokuliphelisa ishishini okanye eyokuliyekisa ukusebenza, okanye xa lingenayo enye indlela enokusebenza ngaphandle kokwenza ngolu hlobo.

Uxanduva loMphicothi-zincwadi Jikelele kuphicotho-zincwadi lweengxelo zemali

8. Iinjongo zam kukufumana ingqiniseko enengqiqo malunga nokokuba iingxelo zemali zizonke azinayo kusini na imposiso ephathekayo eyenziwe ngobuqhinga okanye eyenziwe ngempazamo, nokukhupha ingxelo yomphicothi-zincwadi enoluvo lwam. Ingqiniseko enengqiqo yileyo ekwinqwanqwa eliphezulu kodwa ayisiso isiqinisekiso sokokuba uphicotho-zincwadi olwenziwe ngokungqinelana nemimiselo ye-ISA luya kusoloko luyibona imposiso xa ikho. Imposiso zinokuvela xa kusenziwa ubuqhinga okanye zenziwe ngempazamo kwaye zithatyathwa njengezibonakalayo xa zinokuthi zizodwa okanye xa zidityanisiwe zibe nempembelelo kwizigqibo zoqoqosho zabasebenzisi ezithatyathwe phantsi kwesiseko sezi ngxelo zemali.
9. Ingcaciso ethe vetshe yoxanduva lwam kuphicotho-zincwadi lweengxelo zemali ifakwe kwisihlomo sengxelo yomphicothi-zincwadi.

Ingxelo emalunga noPhicotho-zincwadi lweengxelo yonyaka yokusebenza

Intshayelelo nomda

10. Ngokungqinelana noMthetho woPhicotho-zincwadi kuRhulumente waseMzantsi Afrika, 2004 (uMthetho wama-25 ka-2004) (PAA) nesaziso esikhutshelwe lo mthetho, ndinoxanduva lokuyixela imiba efuna ukuphandwa ephathekayo ekwiinkcukacha zokusebenza ezixeliweyo zithelekiswa neenjongo ezimiswe ngenx'engaphambili kwiinkqubo ezikhethiweyo ezinikwa kwingxelo yonyaka yokusebenza. Ndisebenzise iinkqubo zokubhaqa imiba efun'ukuphandwa kodwa ekungezizo ezokuqokelela ubungqina bokuvakalisa ingqiniseko.
11. Iinkqubo endizisebenzisileyo zijongana neenkukacha zokusebenza ekufuneka zibe zisekelwe kumaxwebhu eziko ocwangciso lokusebenza avunyiweyo. Akhange ndikuphonononge ukugqibelela nokufaneleka kwezalathisi zokusebenza ezifakwe kumaxwebhu ocwangciso. Iinkqubo endizisebenzisileyo azifikelelanga kulo naluphi na udandalaziso okanye amabango anxulumene namacebo okusebenza acetyiweyo nakwiinkcukacha zexesha elizayo ezinokufakwa njengenxalenye yeenkukacha zokusebenza

3. Ingxelo eyenziwa nguMphicothi-zincwadi jikelele ngePlayhouse Company ePalamente

ezixeliweyo. Ngoko ke, iziphumo zam azifikeleli kule miba ixelwe apha.

12. Ndikuphononongile ukuba luncedo nokuthembeka kweenkcukacha zokusebenza ezixeliweyo ngokungqinelana nenkqubo eveliswe kwinkqubo-sikhokelo yolawulo lokusebenza nokunik'ingxelo njengoko kuchazwe kwisaziso gabalala kwezi nkqubo zilandelayo ezichongiweyo nezininike kwingxelo yonyaka yokusebenza yeli ziko yonyaka ophele ngomhla wama-31 kweyoKwindla ngo-2019:

inkqubo	Amaphepha kwingxelo yonyaka yokusebenza
Inkqubo 2 – Uphuhliso loshishino	26-28
Inkqubo 3 – Ukumanya ingeniso	28-29

13. Ndisebenzise iinkqubo ukuze ndifumanise ukuba iinkcukacha zokusebenza ezixeliweyo zinikwe ngokufanelekileyo kusini na kwanokufumanisa ukuba ukusebenza kuyangqinelana namaxwebhu avunyiweyo ocwangciso lokusebenza. Ndisebenzise ezinye iinkqubo ukuze ndifumanise ukuba izalathisi kunye neenjongo ezinxulumene nazo zinokulinganiswa yaye zifanelekile ndaza ndaphonononga ukuthembeka kweenkcukacha zokusebenza ezixeliweyo ukuze ndifumanise ukuba zinyanisekile, zichanekile yaye zigqibelele.
14. Andiyivakalisanga imiba efun'ukuphandwa ekubeni luncedo nasekuthembekeni kweenkcukacha zokusebenza ezixeliweyo kwezi nkqubo ezikhethiweyo.

Omnje umba

15. Nditsala umdla kulo mba ulapha ngezantsi.

Ukuphumeza iinjongo ezicetyiweyo

16. Jonga kwingxelo yonyaka yokusebenza kwiphepha lama-21 ukusa kwelama-30 ukuze ufumane iinkcukacha ngokuphunyezwa kweenjongo ezicetyiweyo zonyaka kunye nengcaciso enikiweyo yeenjongo eziliqela eziphunyezwe ngokugqithisileyo.

Ingxelo yoPhicotho-zincwadi lokuthotyelwa kwemithetho

Intshayelelo nomda

17. Ngokungqinelana nePAA kunye nesaziso esikhutshelwe lo mthetho ndinoxanduva lokuyixela imiba efuna ukuphandwa ephathekayo emalunga nokuthobela imithetho kweli ziko nemiba ethile kwimithetho engundoqo. Ndisebenzise iinkqubo zokubhaqa imiba efuna ukuphandwa ingezizo ezokuqokelela ubungqina bokuvakalisa ingqiniseko.
18. Ayikho imiba efun'ukuphandwa ephathekayo engokungayithobeli imithetho kwizinto ezikhethekileyo ezizimfuneko kwimithetho elawulayo njengoko kubalulwe kwisaziso gabalala esikhutshelwe umthetho iPAA.

Ezinye iinkcukacha

19. Igunya elithabatha uxanduva kwiziko linoxanduva lwezinye iinkcukacha. Ezinye iinkcukacha ziquka iinkcukacha ezifakwe kwingxelo yonyaka. Ezinye iinkcukacha aziziquki iingxelo zemali, ingxelo yomphicothi-zincwadi kunye nezo nkqubo ezichongiweyo ezininike kwingxelo yonyaka yokusebenza ezixelwe ngokukodwa kwingxelo yomphicothi-zincwadi.
20. Uluvo lwam kwiingxelo zemali nakwimiba efun'ukuphandwa kwiinkcukacha zokusebenza ezixeliweyo kunye nokuthotyelwa kwemithetho aluziquki ezinye iinkcukacha yaye andiluvakalisi uluvo lophicotho-zincwadi okanye nasiphi na isigqibo sengqiniseko kuzo.
21. Uxanduva lwam ngokunxulumene nophicotho-zincwadi endilwenzileyo kukufunda ezinye iinkcukacha ndize ndigqale okokuba ezinye iinkcukacha zinokungangqinelani okuphathekayo neengxelo zemali kunye neenkqubo ezichongiweyo ezininike kwingxelo yonyaka yokusebenza okanye ulwazi lwam endilufumene kuphicotho-zincwadi okanye xa zikhangeleka zinempiso ephathekayo.
22. Xa emva kokuba ndiwenzile umsebenzi wam ndigqiba ekubeni kukho imposiso ephathekayo kwezinye iinkcukacha kufuneka ndikuxele oku, akukho nto ndinokuyixela apha ngokunxulumene nalo mba.

Intsilelo yoPhicotho-zincwadi lwangaphakathi

23. Ulawulo lwangaphakathi ndilugqale ngokuphathelele kuphicotho-zincwadi endilwenzileyo lweengxelo zemali, iinkcukacha zokusebenza ezixeliweyo nokuthotyelwa kwemithetho elawulayo; kodwa injongo yam ibingeyiyo eyokuvakalisa nayiphi na ingqiniseko kulawulo lwangaphakathi.
24. Akukho kusilela kuphathekayo endikufumeneyo kulawulo lwangaphakathi.

Auditor-General

Pietermaritzburg
31 kweyeKhala ngo-2019



3. Ingxelo eyenziwa nguMphicothi-zincwadi jikelele ngePlayhouse Company ePalamente

Isihlomelo – Uxanduva loMphicothi-zincwadi Jikelele kolu phicotho-zincwadi

1. Njengxenye yophicotho-zincwadi olwenziwa ngokungqinelana ne-ISA ndigweba ngobuchule yaye ndiyigcine inobuchule intandabuzo yam xa ndisenza uphicotho-zincwadi lweengxelo zemali kunye neenkqubo endizisebenzise kwiinkcukacha zokusebenza ezixeliweyo zeenkqubo ezichongiweyo nakwindlela iziko eliyithobela ngayo imithetho ngokunxulumene nemiba echongiweyo.

lingxelo zemali

2. Ngaphaya koxanduva lwam loMphicotho-zincwadi lweengxelo zemali njengoko kuchazwe kwingxelo yophicotho-zincwadi ndenza ezi zinto zilandelayo:
 - ukwalatha nokuphonononga ubungozi bemposiso ephathekayo kwiingxelo zemali nokokuba ngaba imposiso leyo yenziwe ngobuqhinga okanye ngempazamo, ukuyila nokusebenzisa iinkqubo zophicotho-zincwadi eziphendula kobu bungozi, kunye nokufumana ubungqina bophicotho-zincwadi obaneleyo nobufanelekileyo ukuze bunike isiseko soluvo lwam. Ubungozi bokungayiboni imposiso ephathekayo eyenziwe ngobuqhinga bungaphezulu kobo bemposiso eyenziwe ngempazamo njengoko ubuqhinga bunokuthi bubandakanye iyelenqe, ukuqhatha, ukushiy'izinto ngaphandle ngabom, ukugqwetha okanye ukungananzwa kolawulo lwangaphakathi
 - ukuluqondisisa ulawulo lwangaphakathi olunento yokwenza nophicotho-zincwadi khon'ukuze ndiyile iinkqubo zophicotho-zincwadi ezifanele imeko nganye kodwa oku ndingakwenzi ngenjongo yokuvakalisa uluvo malunga nokusebenza ngokukuko kolawulo lwangaphakathi lwele ziko
 - ukuphonononga ukufaneleka kwemigaqo-nkqubo yocwangciso-mali esetyenziswayo kwakunye nokuqiqa kothelekelelo locwangciso-mali nokubhengeza okunxulumeneyo okwenziwe ligunya elithabatha uxanduva
 - ukwenza isigqibo ngokufaneleka kwendlela igunya elithabatha uxanduva elisebenzisa ngayo isiseko socwangciso-mali seshishini eliqhubekayo xa kulungiswa iingxelo zemali. Kwakhona ndenza isigqibo esisekelwe kubungqina bophicotho-zincwadi endibufumeneyo sokokuba kukho ukuthandabuza okumandla okunxulumene neziganeke okanye iimeko ezinokwenza intandabuzo enkulu yokokuba iziko iPlayhouse Company lingaqhubeka njengeshishini eliqhubekayo. Xa ndifumanisa ukuba kukho ukuthandabuza okumandla kufuneka ndichaze kwingxelo yomphicothi-zincwadi ukubhengezwa kweengxelo zemali okunxulumene nokuthandabuza oko, okanye xa oku kubhengezwa kungonelanga ndoluguqule uluvo lweengxelo zemali. Izigqibo zam zisekelwe kwiinkcukacha endizifumene ngomhla ndisenza ingxelo yomphicothi-zincwadi. Noxa kunjalo, iziganeko okanye iimeko zexa elizayo zinako ukubangela ukuba eli ziko liyeke ukuba lishishini eliqhubekayo
 - ukuphonononga ukunikwa kweengxelo zemali kukonke, ubume bazo, oko zikuquletheyo kuquka nokubhengeza kwanokuba iingxelo zemali zinika intengiselwano nezehlelo ngendlela enobulungisa kusini na.

Unxibelelwano nabantu abanoxanduva lolawulo

3. Ndiye ndinxibelelane negunya elithabatha uxanduva malunga nomda ocetyiweyo kunye nexesha loMphicotho-zincwadi, kuquka nemiba ephathekayo efun'ukuphandwa yophicotho-zincwadi nayo nayiphi na intsilelo emandla kulawulo lwangaphakathi endithi ndizibhaqe xa ndisenza uphicotho-zincwadi.
4. Kwakhona ndiye ndiqinisekise igunya elithabatha uxanduva ukuba ndizithobele iinqobo ezisemgangathweni eziyimfuneko ezimalunga nokuzimela kwam ndize ndibudandalazise bonke ubudlelwane endinabo kunye neminye imiba enokuthatyathwa njengenefuthe ekuzimeleni kwam ndize ndinike iindlela ezifanelekileyo zokuzikhusela xa kufuneka.

4. INGXELO YOKUSEBENZA KWEMALI

Ingxelo Yobume Bezimali

	Amanqaku	eyoKwindla 2019	eyoKwindla 2018
		R	R
IMPAHLA YEXABISO			
Impahla yexabiso elungiselelwe ixesha elizayo			
Impahla yexabiso elilifa	2.1	88 330 000	88 330 000
Ipropati, izixhobo noomatshini	2.2	111 217 147	100 931 342
Impahla yexabiso engenakuchukunyiswa	2.3	600 991	407 588
		90 697 202	92 306 758
Impahla yexabiso esetyenziswa ngoku			
Izintlu zempahla	3	515 063	605 240
Urhwebo nezinye izinto ezifunyanwayo	4	2 122 803	1 882 179
Imali eziinkozo nenye imali elingana nayo	5	88 059 336	89 819 339
Impahla yexabiso iyonke		290 845 340	281 975 688
AMATYALA			
Amatyala exesha elide			
Umvuzo orhoxisiweyo	6	15 255 246	10 885 416
Amatyala angoku			
Urhwebo nezinye izinto ezihlawulwayo	7	8 704 267	9 071 175
AMATYALA EWONKE		23 959 513	19 956 591
Impahla yexabiso eyintsalela			
Iintsalela eyintlanganisela		266 885 827	262 019 097
IMPAHLA YEXABISO EYINTSALELA IYONKE NAMATYALA EWONKE		290 845 340	281 975 688

Ingxelo Yokusebenza Kwemali

	Amanqaku	eyoKwindla 2019	eyoKwindla 2018
		R	R
Ingeniso			
Ingeniso evela kwiintengiselwano zolwananiso		14 191 854	13 613 831
Amaziko enkonzo nezixhobo	8	7 155 627	6 231 997
Inzala efunyenweyo		7 036 227	7 381 834
Ingeniso evela kwiintengiselwano ezingezizo ezolwananiso		94 684 402	72 910 276
Izibonelelo	9	85 771 171	64 060 384
Amalizo nezibonelelo zenkxaso-mali (jimveliso)		3 561 851	1 936 000
Inkonzo zohlobo oluthile	25	5 351 380	6 913 892
Ingeniso iyonke		108 876 255	86 524 107
Nganeno: lindleko		104 009 525	91 274 181
lindleko zokucoca		2 375 475	2 026 624
Ukuhla kwexabiso nokuhlalulwa kwamatyala	10	18 119 343	16 209 570
Umbane		4 015 728	4 019 483
lindleko zabasebenzi	11	37 251 177	33 428 138
lindleko gabalala	12	11 111 731	8 836 728
lindleko zokukhathalela izinto nokuzilungisa	13	2 119 733	2 359 785
lindleko zokuvelisa	14	19 964 144	14 223 989
Irhafu		5 351 380	6 913 892
lindleko zokhuseleko		3 700 814	3 255 972
Intsalela (Intsilelo) yonyaka	15	4 866 730	(4 750 074)

Ingxelo Yeenguqu Kwimpahla Yexabiso Eyintsalela

	Amanqaku	eyoKwindla 2019	eyoKwindla 2018
		R	R
Intsalela eyintlanganisela evulayo njengoko kuxeliwe kwixa elingaphambili		262 019 097	266 769 171
Intsalela (intsilelo) yonyaka		4 866 730	(4 750 074)
Iintsalela eziyintlanganisela ezivalayo	16	266 885 827	262 019 097

Ingxelo Yokungena Kwemali

	Amanqaku	eyoKwindla 2019	eyoKwindla 2018
		R	R
Imali engenayo evela kwimisebenzi			
Imali efunyenwe kubaboneleli nakubaxumi		111 503 271	89 209 808
Imali ehlawulwe abaniki-nkonzo nabasebenzi		(91 516 877)	(89 738 360)
Imali (esetyenzisiweyo) eyenziwe kwimisebenzi	17	19 986 394	(528 552)
Inzala efunyenweyo		7 036 227	7 381 834
Imali eseleyo kuleyo yenziwe ngemisebenzi		27 022 621	6 853 282
Imali engenayo esetyenziswe kutyalo-mali			
Izongezo kwipropati, oomatshini nezixhobo		(28 676 534)	(14 012 232)
Izongezo kwimpahla engenakuchukunyiswa		(106 090)	(62 077)
Inzuzo eyenziwe kwintengiso yepropati, oomatshini nezixhobo		-	303 000
Imali eyintsalela esetyenziswe kutyalo-mali		(28 782 624)	(13 771 309)
Imali engenayo evela kwimisebenzi yezemali			
Ukuhla kwemali-mboleko yexesha elide		-	-
Imali eyintsalela evela kwimisebenzi yezemali		-	-
Ukuhla okuyintsalela kwemali eziinkozo nenye imali elingana nayo		(1 760 003)	(6 918 027)
Imali eziinkozo nenye imali elingana nayo ekuqaleni konyaka		89 819 339	96 737 366
Imali eziinkozo nenye imali elingana nayo ekupheleni konyaka	5	88 059 336	89 819 339

Imigaqo-Nkqubo Yocwangciso-Mali

1 Imigaqo-nkqubo yocwangciso-mali

1.1. 1.1 Iingxelo zemali zilungiswe ngokungqinelana neMigangatho eYamkeleke Jikelele yeMikhwa yoCwangciso-mali (GRAP) kuquka naziphi na ezinye iinkcazo, izikhokelo kunye nemiyalelo ekhutshwe yiBhodi yeMigangatho yoCwangciso-mali ngokuyalela kweCandelo lama-55(1)(b) loMthetho woLawulo lweMali kaRhulumente, (uMthetho woku-1 ka-1999 olungiswe nguMthetho wama-29 ka-1999). Impahla yexabiso, amatyala, ingeniso kunye neendleko azilinganiswa ngaphandle kwaxa ukulinganiswa kwazo kufunwa okanye kuvunyelwa nguMgangatho weGRAP. Imigaqo-nkqubo yocwangciso-mali isetyenziswa kunye naleyo isetyenziselwe ukunika iingxelo zemali zonyaka ogqithileyo, ngaphandle kwalapho kucaciswe ngokuthe gca. Iinkcukacha zazo naziphi na iinguqu kwimigaqo-nkqubo yocwangciso-mali zichazwe kumgaqo-nkqubo ofanelekileyo.

Iingxelo zemali zonyaka zenziwe phantsi kwesiseko esongezelelayo socwangciso-mali kwaye zingqinelana nemvumelwano yeendleko eyimbali ngaphandle kwezixhobo zemali ezilinganiswa ngexabiso elifanelekileyo.

Le migaqo-nkqubo yocwangciso-mali iyangqinelana neyanyakenye.

Iingxelo zemali yeGRAP evunyelwe yiBhodi yeMigangatho yoCwangciso-mali esetyenziswa liziko iPlayhouse Company.

GRAP 1 Ukunika iingxelo zemali

GRAP 2 Iingxelo zokungena kwemali

GRAP 3 Imigaqo-nkqubo yocwangciso-mali, iinguqu kuthelakelelo locwangciso-mali neempazamo

GRAP 4 Ifuthe leenguqu kwiqondo lokutshintshiselana ngemali yamazwe ehlabathi

GRAP 9 Ingeniso evela kwintengiselwano yolwananiso

GRAP 12 Izintlu zempahla

GRAP 13 Ukuqeshisa ngomhlaba

GRAP 14 Izehlo ezisemva komhla wokunik'ingxelo

GRAP 17 Ipropati, oomatshini kunye nezixhobo

GRAP 19 Iminikelo, amatyala asenokubakho kunye nempahla yexabiso enokubakho

GRAP 23 Ingeniso evela kwiintengiselwano ezingezizo ezolwananiso utshintshiselwano kunye nerhafu

GRAP 24 Ukunika iinkcukacha zohlahlo-lwabiwo mali

GRAP 25 Amaqithiqithi abasebenzi

GRAP 26 Ukuchithwa kwempahla yexabiso engenisa imali

GRAP 31 Impahla yexabiso ezinzileyo

GRAP 103 Impahla yexabiso elilifa

GRAP 104 Izixhobo zemali

IPSAS 20 Ukudalula kweqela elinonxulumano

Ezi ngxelo zilandelayo zeMigangatho eYamkeleke Jikelele yoCwangciso-mali (iGRAP) ezikhutshwe yiBhodi yeMigangatho yoCwangciso-mali ziiingxelo ezikhutshiweyo kodwa azisebenzi kwiziko iPlayhouse Company:

GRAP 5 Imboleko

GRAP 6 Iingxelo zemali ezimanyweyo nocwangciso-mali lwamaziko alawulwayo

GRAP 7 Ucwangciso-mali lotyalo-mali ngentsebenziswano

GRAP 8 Ukunik'ingxelo yemali kwinzala efunyenwe kutyalo-mali oludityanelweyo

GRAP 10 Ukunik'ingxelo yemali kuqoqosho oluguqu-guquka ngamandla

GRAP 11 Ikontraktha zokwakha

GRAP 16 Utyalo-mali kwipropati

GRAP 18 Ukunik'ingxelo ngezigaba

GRAP 21 Ukuchithwa kwempahla yexabiso engangenisi mali

GRAP 27 Ezolimo

GRAP 100 Imisebenzi enqunyanyisiweyo

GRAP 105 Ukugqithiswa kwemisebenzi phakathi kwamaziko aphantsi kolawulo olufanayo

GRAP 106 Ukugqithiswa kwemisebenzi phakathi kwamaziko angekho phantsi kolawulo olufanayo

GRAP 107 Indibaniselwano

IFRS 4 Izivumelwano zeinshorensi

IFRS 6 Ukuhlola nokuvavanya izimbiwa

IAS 12 Ingeniso yerhafu

IFRIC 4 Ukufumanisa ukuba isigqibo sinaso kusini na isivumelwano sokuqeshisa ngomhlaba

IFRIC 12 Izigqibo zemvume yenkonzo

SIC 25 Ingeniso yerhafu -linguqu kubume berhafu yeziko okanye kubanini-zabelo beziko

SIC 29 Izigqibo zemvume yenkonzo - Ukudalula

IFRIC 20 Iindleko zokuqhaqha kwisigaba sokuvelisa umphezulu womgodini

Ezi ngxelo zilandelayo zeMigangatho eYamkeleke Jikelele yoCwangciso-mali (iGRAP) ekhutshwe yiBhodi yeMigangatho yoCwangciso-mali ziyasebenza kodwa azisebenzi ngokupheleleyo kumaziko karhulumente akwishedyuli 3A no-3C nakumaziko asekwengokuyalela komgaqo-siseko:

GRAP 20 Ukudalula kwamaqela anxulumeneyo

Effective Date

01 kuTshazimpuzi ngo-2019

GRAP 32 Ulungelelaniso lwemvume yenkonzo: Umnikeli

01 kuTshazimpuzi ngo-2019

GRAP 108 Izinto ezifunyanwayo ezimiswe ngokomthetho

01 kuTshazimpuzi ngo-2019

GRAP 109 Ucwangciso-mali olwenziwa ngabaphathi kunye neearhente

01 kuTshazimpuzi ngo-2019

IGRAP 17 Ulungelelaniso lwemvume yenkonzo apho umnikeli alawula inzala ebonakalayo eyintsalela kwimpahla yexabiso

01 kuTshazimpuzi ngo-2019

IGRAP 18 Ukwamkela nokungawamkeli umhlaba

01 kuTshazimpuzi ngo-2019

IGRAP 19 Imfanelo yokuhlawula irhafu

01 kuTshazimpuzi ngo-2019

Isikhokelo socwangciso-mali lolungelelaniso olwenziwa ngokwenkqubo yezindlu yezwelonke

01 kuTshazimpuzi ngo-2019

Iimithetho-siseko yokulinganisa neyokwamkela ezi ngxelo zeGRAP zilapha ngasentla xa zithelekiswa kwiingxelo zeGAAP ezingene endaweni yazo azohlukanga kungenjalo azibonisi okanye azidali mahluko ungako kwizinto ezinikwe nezibhengezwe kwiingxelo yezemali.

Imigaqo-Nkqubo Yocwangciso-Mali (Iiyaqhutywa)

1.2. Ukusebenzisa iintelekelelo nokugweba

Ukulungiswa kweengxelo zemali kufuna ukuba abaphathi bagwebe, bethlekelele kwaye benze izizindlo ezichaphazela ukusetyenziswa kwemigaqo-nkqubo yocwangciso-mali kunye namanani axeliweyo empahla yexabiso nawamatyala, ingeniso kunye nenkcitho. Intelekelelo kunye nezizindlo ezayamene nayo zisekelwe kumava enx' engaphambili kwakunye nakwezinye izinto ekukholeleka ukuba zifanelekile phantsi kweemeko, yaye iziphumo iziphumo zazo zisisiseko sokwenza isigwebo ngexabiso lempahla yexabiso kunye namatyala angekakaci avela kweminye imithombo. Iziphumo zokwenene zinokwahluka kule ntelekelelo.

Uphononongo lwentelekelelo kunye nezizindlo luyenziwa. Uphengululo olwenziwe kwintelekelelo yocwangciso-mali luyagqalwa xa kuphengululwa intelekelelo xa olu phengululo luchaphazela kuphela elo xesha okanye ixesha lophengululo kunye nexesha elizayo xa uphengululo luchaphazela kokubini ixesha langoku nelizayo.

linkcukacha malunga nemiba ebalulekileyo yentelekelelo, eyentandabuzo kunye neyезigwebo ezingundoqo ekusetyenzisweni kwemigaqo-nkqubo yocwangciso-mali enefuthe elikhulu kwini elamkelwa kwiingxelo zemali zichazwa kula manqaku alandelayo:

Inqaku 1.3 Ipropati, oomatshini nezixhobo

Inqaku 1.5 Impahla yexabiso engenakuchukunyiswa

Note 1.13 Amalungiselelo

1.3. Ipropati, oomatshini nezixhobo

Inqaku lepropati, oomatshini nezixhobo ezifanelwe kukwamkelwa njengempahla yexabiso zilinganiswa kuqala ngeendleko zazo. Ipropati, oomatshini nezixhobo zixelwe kwiindleko eziyimballi ezinganeno kwentlanganisela yokuhla kwexabiso kunye nentlanganisela yelahleko yokuchithwa kwempahla yexabiso. Ubomi obuluncedo bempahla yexabiso bufunyenwe emva kokuzigqala ngobuchule zonke iimeko ezichaphazela iziko iPlayhouse Company. Inkqubo yobomi obuluncedo nokuhla kwexabiso lempahla yexabiso iyavavanywa kwakhona rhoqo ngonyaka kwaye naziphi na iinguqu ezikhoyo kwintelekelelo ziyagqalwa xa kuqingqwa iindleko eziseleyo zokuhla kwexabiso nezokuhlalulwa kwamatyala. Oomatshini nezixhobo azinalo ixabiso eliyintsalela njengoko le mpahla yexabiso isetyenziswa ubomi bayo bonke.

Xa impahla yexabiso ithengwa liziko likarhulumente kungekho okanye kukho ingqalelo encinane (oko kukuthi intengiselwano engeyiyo eyolwananiso), iindleko zithatyathwa njengezilingana nexabiso elifanelekileyo lempahla leyo yexabiso ngomhla ethengwa ngawo.

Impahla yexabiso inikwa ixabiso elifanelekileyo ngenkqubo yokubuyisela ixabiso elihlileyo. Xa ingekho imalike esebenzayo, ixabiso elifanelekileyo lempahla liqingqwa ngokuyithelekisa nenye impahla eneempawu ezifanayo nayo.

Izixhobo zolaleliso ezinkulu zithatyathwa njengepropati, oomatshini nezixhobo xa iziko likarhulumente lilindele ukuzisebenzisa amatyali aliqela. Kananjalo xa izixhobo zolaleliso ezinkulu zinokusetyenziswa kuphela ngokunxulumene nombala othile wepropati, oomatshini nezixhobo zibalwa njengepropati, oomatshini nezixhobo.

Ukuhla kwexabiso kubalwa kwinkqubo yomgca ongqalileyo, ukucima ixabiso lempahla yexabiso nganye kumaxabiso athelekelelweyo entsalela ngaphaya kobomi bayo obuluncedo obuthelekelelweyo ngolu hlobo:

Izakhiwo	: iminyaka emi-50
Izithuthi	: iminyaka emi-5-29
Office furniture and other equipment	: iminyaka emi-5-39
Ifanitshala yase-ofisini kunye nezinye izixhobo	: iminyaka emi-3-26
Izixhobo zekhompyutha	: iminyaka emi-4-49
Izixhobo zendawo yokusebenzela	: iminyaka emi-5-32

Alithotywa ixabiso lemisebenzi yobugcisa yaye ixabiso lempahla yaseqongeni, iikhostiyum nemibhalo yomculo neyamabali liyacinywa zisakuthengwa.

Inkcitho elandelayo enxulumene nepropati, oomatshini nezixhobo yenziwa xa kunokwenzeka ukuba inzuzo yoshishino yexesha elizayo yokusetyenziswa kwempahla yexabiso yonyuswe. Yonke enye inkcitho elandelayo ibonwa njengenkcitho ngexesha elo zenziwe ngalo.

1.4. Ukuchithwa kwempahla

Impahla yexabiso engeyiyo imali

Ixabiso lempahla yexabiso yasePlayhouse Company ngaphandle kwezintu zempahla liyaphononongwa rhoqo ngomhla wokunika ingxelo ukufumanisa okokuba akukho kuchithwa kwempahla kukhoyo kusini na. Xa kukho ukuchithwa kwempahla, kuye kuthelekelelwe ixabiso elinokufunyanwa ngempahla leyo.

Ixabiso elinokufunyanwa ngempahla yexabiso lenziwa ngexabiso elikhulu lokusetyenziswa kwayo kunye nexabiso layo elifanelekileyo kususwe iindleko zokuyithengisa. Ngeenjongo zokuhlola ukuchithwa kwempahla kuye kuvavanywe imeko yempahla yexabiso ukuze kuqinisekise ixabiso layo lokuyisebenzisa. Xa impahla yexabiso yonakele kangangokuba ingenakulungiseka inikwa ixabiso elifanele ukuhla kwexabiso layo.

Ilahleko yokuchithwa kwempahla yamkelwa xa ixabiso lempahla yexabiso lingaphaya kwexabiso elinokufunyanwa ngawo. Ilahleko yokuchithwa kwempahla iyamkelwa kwingeniso okanye kwilahleko.

Ukurhoxiswa kokuchithwa kwempahla

Ilahleko yokuchithwa kwempahla iyarhoxiswa xa kubekho iinguqu kwintelekelelo esetyenziselwe ukuqingqa ixabiso elinokufunyanwa ngempahla leyo. Ilahleko yokuchithwa kwempahla irhoxiswa ukufikelela kuphela apho ixabiso lokuyigcina linganeno kwexabiso eliya kube limiswe ngentsalela yokuhla kwexabiso okanye yokuhlalulwa kwamatyala xa kungekho lahleko yakuchithwa kwempahla igqaliweyo.

1.5. Impahla yexabiso ezinzileyo

Into ezinzileyo ekulungeleyo ukwamkelwa njengempahla yexabiso ilinganiswa ngeendleko zayo kuqala. Impahla yexabiso ezinzileyo iboniswa ngeendleko ezinganeno kwentlanganisela yeendleko zokuhlalulwa kwamatyala nelahleko yokuchithwa kwempahla. Ubomi obuluncedo bempahla yexabiso ezinzileyo buyavavanywa kwakhona rhoqo ngonyaka kwaye naziphi na iinguqu kwintelekelelo ziyagqalwa xa kuqingqwa iindleko eziseleyo zokuhlalulwa amatyala. Imali yokuhlalulwa amatyala ibalwa ngendlela yomgca ongqalileyo yokucima iindleko zempahla yexabiso ezinzileyo ngaphezu kobomi bayo obuthelekelelweyo ngolu hlobo:

I-Software

: Iminyaka emi-2-19

Imigaqo-Nkqubo Yocwangciso-Mali (Iiyaqhutywa)

1.6. **Impahla yexabiso elilifa**

Impahla yexabiso elilifa yimpahla enentsingiselo yenkcubeko, eyokusingqongileyo, eyembali, eyendalo, eyobunzululwazi, eyobuchwepheshe okanye eyobugcisa kwaye igcinwa ixesha elingaqingqwanga ukuze incede izizukulwana ezikhoyo nezizayo.

Impahla yexabiso elilifa ithatyathwa njengempahla yexabiso kuphela xa: (a) kubonakala ukuba iziko liza kuxhamla inzuzo yoshishino okanye yokuphucuka kwenkonzo ngokunxulumene nale mpahla yexabiso, naxa (b) iindleko okanye ixabiso elifanelekileyo lempahla yexabiso linokulinganiswa ngokuthembekileyo.

Impahla yexabiso elilifa ekulungeleyo ukuthatyathwa njengempahla yexabiso iya kulinganiswa ngeendleko zayo.

Xa impahla yexabiso elilifa ifunyenwe ngentengiselwano engeyiyo eyolwananiso, iindleko zayo ziya kulinganiswa ngexabiso langomhla wokufunyanwa kwayo.

Impahla yexabiso elilifa isakuba ithatyathwe njengempahla yexabiso iya kuthi izuzwe ngexabiso layo ngenano kwelahleko yokuchithwa kwempahla eyintlanganisela.

1.7. **Izintlu zempahla**

Izintlu zempahla zizuzwa ngeendleko ezinganeno kweendleko nentsalela yexabiso elifumanekayo. Iindleko zezintlu zempahla ziquka zonke iindleko zokuthenga, ezokuguqula nezinye iindleko ezidalwe kukuzisa izintlu zempahla kwindawo ezikuyo zikwimo eyiyo kwaye zimiselwa ngendlela yokukhupha ezifike mva ushiye ezifike kuqala. Izintlu zempahla eziphelelewe lixesha, ezingasafunekiyo nezihamba kancinci ziyalathwa rhoqo zize zibhalwe phantsi kwintlekelelo yentsalela yexabiso ezinokuthengiswa ngalo.

1.8. **Izixhobo zemali**

Umlinganiselo

Izixhobo zemali ziqala zilinganiswe ngeendleko eziquka iindleko zentengiselwano. Emva kokwamkelwa kwazo okokuqala ezi zixhobo zilinganiswa ngolu hlobo lulandelayo:

Urhwebo nezinye izinto ezifunyanwayo

Urhwebo nezinye izinto ezifunyanwayo ezisekwe yiPlayhouse Company zixelwe kwiindleko ngenano kolungiselelo lwamatyala athandabuzekayo. Izinto ezifunyanwayo ziyacinywa xa zithatyathwa njengezingenakufunyanwa kwakhona. Urhwebo nezinye izinto ezifunyanwayo kunye nolungiselelo lwamatyala athandabuzekayo zinikwa isaphulelo kusetyenziswa iqondo lenzala yemali-mboleko xa kufanelekile.

Imali eziinkozo nenye imali elingana nayo

Imali eziinkozo nenye imali ilinganiswa ngexabiso elifanelekileyo.

Urhwebo nezinye izinto ezihlawulwayo

Urhwebo nezinye izinto ezihlawulwayo ezisekwe yiPlayhouse Company zixelwe kwiindleko. Urhwebo nezinye izinto ezihlawulwayo zinikwa isaphulelo kusetyenziswa iqondo lenzala yemali-mboleko xa kufanelekile.

Iinzuzo neelahleko zomlinganiselo olandelayo

Iinzuzo nelahleko ezivela kwiinguqu zexabiso elifanelekileyo lezixhobo zemali ezingeyiyo inxalenye yobudlelwane bokuzikhusela kwilahleko ziqukwa kwintsalela yengeniso okanye yelahleko ngexesha ezivela ngalo iinguqu.

1.9. **Izicwangciso zesibonelelo somhlala-phantsi**

Ngumgaqo-nkqubo wePlayhouse Company ukunika abasebenzi bayo izibonelelo zomhlala-phantsi. Igalelo lePlayhouse Company kwizicwangciso ezichaziweyo zokufaka igalelo nezenzuzo liba ziindleko njengoko lisenziwa.

1.10. **Ingeniso evela kwintengiselwano engeyiyo eyolwananiso**

Ingeniso evela kwintengiselwano engeyiyo eyolwananiso ivela xa iziko lifumana ixabiso kwelinye iziko lingakhange lilinike ngqo ixabiso elilingana nalo lothelekelelo kulwananiso. Impahla yexabiso efunyenwe ngentengiselwano engeyiyo eyolwananiso iya kuqala ilinganiswe ngexabiso layo elifanelekileyo langomhla wokuthengwa kwayo.

Le ngeniso iya kulinganiswa ngenani lokunyuka kwentsalela yempahla yexabiso eyamkelwa liziko.

Ukungena kwezixhobo zentengiselwano engeyiyo eyolwananiso ezithatyathwa njengempahla yexabiso ziya kwamkelwa njengengeniso, ngaphandle kokuba kwamkelwe ityala kwakuloo mali ingenayo. Njengoko iziko lanelisa imfanelo ethatyathwa njengetyala ngokokungena kwezixhobo zentengiselwano engeyiyo eyolwananiso eyamkelwe njengempahla yexabiso, liya kulithoba ixabiso letyala elamkelwa njengexabiso elilingana nelo lithotyweyo.

Iziko iPlayhouse Company lityikitye isivumelwano sokusebenzisa imihlaba nezakhiwo ezithile simahla.

1.11. **Ingeniso**

Izibonelelo

Izibonelelo ezayamene nenkcitho yokusebenza zamkelwa njengengeniso xa kucaca ukuba intlawulo yesibonelelo iza kufunyanwa kwanokuba ixabiso layo linokuthelekelelwa ngokuthembekileyo ngaphandle kokuba kukho imfanelo ekhoyo yokusebenzisa isibonelelo eso sihlawulweyo ngendlela ethile okanye sibuyiselwe emva kumboneleli. Xa kuyimfuneko ukusebenzisa isibonelelo ngendlela ethile kuphela ingekho eyokusibuyisela emva kumboneleli, akusayi kubakho mfanelo ekhoyo ke ngoko size samkelwe njengengeniso. Xa kukho imfanelo ekhoyo, isibonelelo eso samkelwa njengengeniso erhoxisiweyo de kulngatyezwane neemfanelo ezo ukuze samkelwe njengengeniso.

Imigaqo-Nkqubo Yocwangciso-Mali (Iiyaqhutywa)

1.11. *Ingeniso (iyaqhutywa)*

Izibonelelo (iyaqhutywa)

Izibonelelo ezayamene nokufunyanwa okanye ukwakhiwa kwempahla yexabiso zigqalwa njengengeniso xa kucaca ukuba intlawulo yesibonelelo iza kufunyanwa kwaye ixabiso layo linokuthelekelelwa ngokuthembekileyo, ngaphandle kwaxa kukho imfanelo ekhoyo yokusebenzisa isibonelelo eso sihlawulweyo ngendlela ethile kuphela okanye eyokusibuyisela emva kumboneleli. Xa kungeyomfuneko ukusebenzisa isibonelelo ngendlela ethile kuphela ingekho enye ehambisana nayo yokusibuyisela emva kumboneleli, akusayi kubakho mfanelo ikhoyo ke ngoko size isibonelelo samkelwe njengengeniso. Xa kukho imfanelo ekhoyo isibonelelo eso samkelwa njengengeniso erhoxisiweyo de kuhlangatyezwane neemfanelo ukuze samkelwe njengengeniso.

Inzala eyingeniso

Ingeniso eyinzala yamkelwa ngendlela yokwahlulwa kwexesha, kugqalwe imali etyalwayo kunye neqondo lenzala yexesha langoku ukusa kwelokuvuthwa kwayo, xa kucaca ukuba ingeniso leyo iza kukhulela iPlayhouse Company.

Ingeniso yendawo yokubhukishela izihlalo nengeniso enxulumene nayo

Ingeniso yendawo yokubhukishela izihlalo nengeniso enxulumene nayo yamkelwa xa sele ibonisiwe imveliso. Amatikiti anikwa njengesipho akhuthshelwe ukukhuthaza intengo nokuthengisa imveliso awanaxabiso kwaye awaqukwa kwingeniso yendawo yokubhukishela izihlalo nengeniso enxulumene nayo.

Enye ingeniso

Enye ingeniso yamkelwa xa kucaca ukuba inzuzo yexesha elizayo yoqoqosho iza kungenela iPlayhouse Company kwaye ibe iya kukwazi ukulinganiswa ngokuthembekileyo.

1.12. *Iinkonzo zodidi oluthile*

Iinkonzo zodidi oluthile zamkelwa ngexabiso lazo elifanelekileyo xa kubalulekile kumsebenzi nakwiinjongo zokuhanjiswa kweenkonzo kwanaxa kucacile ukuba inzuzo yexesha elizayo yoqoqosho okanye ithuba lomsebenzi liza kuza kwiziko kwanokuba ixabiso lempahla yexabiso linokuthi lilinganiswe ngokuthembekileyo. Xa iinkonzo zodidi oluthile zingabalulekanga kumsebenzi okanye nakwiinjongo zokuhanjiswa kweenkonzo kwaye okanye xa zingahlangabezani nenkqubo yokwamkelwa, kubhengezwa kuphela ubume nohlobo lweenkonzo zodidi oluthile ezifunyenwe ngexesha lokunikwa kwengxelo.

1.13. *Iminikelo*

Iminikelo yamkelwa xa iPlayhouse Company inembopheleleko yomthetho ngenxa yezehlo zangaphambili nalapho kucaca ukuba kuya kubakho ilahleko kwinzuzo yoqoqosho, nalapho kunokwenziwa uthelekelelo oluthembekileyo lwexabiso lomnikelo. Apho libaluleke khona ifuthe lesaphulelo, iminikelo iba nesaphulelo. Inani lesaphulelo elisetyenzisiweyo linani elibonisa uhlalutyo lweemalike lwangoku lwexabiso lexesha lemali kwanobungozi obuhambisana netyala elo, xa kufanelekile.

1.14. *Imali eziinkozo nanye imali elingana nayo*

Ngeenjongo zengxelo yokungena kwemali, imali eziinkozo nanye imali iquka imali esesandleni, efakwe ebhankini notyalo-mali kwiimalike zemali, intsalela ye-overdraft, yonke imali esele ilungele ukusetyenziswa yiPlayhouse Company ngaphandle kwalapho kuxelwe nto yimbi.

1.15. *Iqela elinonxulumano*

Intengiselwano yamaqela anonxulumano kukugqithiselana ngezixhobo okanye iimfanelo phakathi kwamaqela anonxulumano nokokuba kukho iindleko ezihlawulwayo kusini na. Amaqela athatyathwa njenganxulumeneyo xa elinye iqela linako ukulawula elinye iqela okanye linefuthe elibonakalayo kwelinye iqela kwizigqibo zalo zemali okanye zokusebenza okanye xa amaziko anonxulumano ephantsi kolawulo olufanayo. Inqaku lokubhengeza linika iinkcukacha zentengiselwano yamaqela anonxulumano.

1.16. *Iimbopheleleko*

Commitments represent capital goods/services that have been approved and/or contracted, but where no delivery has taken place at the reporting date. Commitments are thus not recognised in the statement of financial position as a liability or as expenditure in the statement of financial performance but the value of the capital good/services that have been approved and /or contracted and the balance outstanding at year end are included in the disclosure notes.

1.17. *Amanani othelekiso*

Amanani othelekiso alungelelanisiwe ukuze angqinelane neenguqu ezinikwayo nezichazwayo, xa kufanelekile.

1.18. *Ishishini eliqhubayo*

Isiseko seshishini eliqhubayo samkelwe ukuze kulungiswe iingxelo zemali. Abaphathi abanasizathu sokukholelwa ekubeni le nkampani ayisayi kuba lishishini eliqhubayo kwixa elizayo ngenxa yesibophelelo senkxaso-mali eyifumana kwiSebe lezoBugcisa neNkcubeko, ukuxelwa ngenx' engaphambili nezixhobo zemali ezikhoyo kwakunye nemali ekhoyo.

I-Playhouse Company ifumene isabelo senkxaso-mali seminyaka emithathu ezayo ngokweMTEF kwiSebe lezoBugcisa neNkcubeko.

1.19. *Ingeniso erhoxisiweyo*

Amatyala ayonyuswa ngokwemali efunyanwa kwizibonelelo zoxhomekeko. Ingeniso evela kwezi zibonelelo iyarhoxiswa de kuhlangatyezwane neemfuno zesibonelelo. Amatyala ezibonelelo ayehla xa ingeniso erhoxisiweyo yezibonelelo iphunyezwa.

1.20. *Iinkcukacha zohlalho-lwabiwo mali*

Uhlalho-lwabiwo mali oluvunyiweyo lwenziwa ngesiseko semali eziinkozo luze lunikwe ngenkcazelo emanywe neenjongo zeziphumo zokusebenza, xa kunokwenzeka. Uhlalho-lwabiwo mali oluvunyiweyo luquka ixesha eliphakathi komhla woku-1 kuTshazimpuzi ukusa kowama-31 kweyoKwindla. Iingxelo zemali nohlalho-lwabiwo mali azenziwa ngesiseko esifanayo socwangciso-mali. Iinkcukacha zeengxelo zemali zinikwa ngesiseko sokuzithelekisa neenkukacha zohlalho-lwabiwo mali. Ukuthelekisa nokumanya ingxelo yokusebenza kwemali nohlalho-lwabiwo mali okwenziwe ngeli xesha lokunik'ingxelo kufakwe kwiNgxelo yokuthelekisa uhlalho-lwabiwo mali kunye nemali ekhoyo.

Intsalela ekwixelo nganye yokusebenza kwemali imanywa kwintsalela yohlalho-lwabiwo mali uze umahluko obonakalayo uchazwe kwiNgxelo yokuthelekisa uhlalho-lwabiwo mali kunye namanani emali akhoyo, njengokumisela kwenkqubo-sikhokelo yokubaluleka nobukhulu.

1.21. *Iintengiselwano zemali yamazwe angaphandle*

"Iintengiselwano ezenziwa ngemali yamazwe angaphandle zishicilelwa ngeqondo lokutshintsh'imali elikhoyo ngomhla wokwenziwa kwentengiselwano. Umahluko wokutshintshwa kwemali ovela xa kuhlawulwa okanye kuguqulwa izinto ezixabiswa imali ezikumqondo angafaniyo nalawo ebeguqulelwe kuwo ekuqaleni kwiingxelo zemali zonyaka ogqithileyo wamkelwakwengeniso okanye ilahleko yangeloo xesha ovela ngalo. Ingeniso nelahleko evela xa kuguqulwa imali inikwa okanye ihlawulwa kwingeniso ekwixelo yokusebenza kwemali.

AMANQAKU EENGXELO ZEMALI ZONYAKA

	eyoKwindla 2019	eyoKwindla 2018
	R	R
2. IMPAHLA YEXABISO		
2.1 Impahla yexabiso elilifa		
Imali ekhoyo	88 330 000	88 330 000
Ubukhulu bemali ekhoyo	88 330 000	88 330 000
Intlanganisela yelahleko yokuchithwa kwempahla	-	-
Imali ekhoyo ekupheleni konyaka	88 330 000	88 330 000

Impahla yexabiso elilifa iquka umhlaba nezakhiwo : Rem of portion 1 of ERF 10636 of Durban. Esi sakhwiwo sanikwa ixabiso nguMasipala waseThekwini ngekaCanzibe ngo-2008.

Impahla yexabiso elilifa yamkelwa okokuqala ngeyoKwindla ngo-2011 ngokungqinelana neGrap 23 - Ingeniso evela kwiintengiselwano ezingezizo ezolwananiso, iirhafu nokugqithiswa.

Umhlaba nezakhiwo zibhaliswe egameni leSebe leMisebenzi kaRhulumente. IPlayhouse Company iqesha umhlaba nezakhiwo kwiSebe leMisebenzi kaRhulumente.

Ngokwecandelo lama-66 loMthetho iPFMA, iPlayhouse Company ayinako ukusebenzisa ipropati engenakuchukunyiswa kuquka nempahla yexabiso elilifa njengesibambiso. and the land and buildings are unencumbered.

Ayikho impahla yexabiso ekubanjiswe ngayo ematyaleni.

Amanqaku Eengxelo Zemali Zonyaka (Iiyaqhutywa)

2.2. Ukumanya ixabiso elikhoyo lepropati, oomatshini nezixhobo

	Izithuthi	Izixhobo zokuzi-lungisa	Ifanitshala yase-ofisini nezinye izixhobo	Izixhobo zekhompuyutha	Izixhobo zeqonga	Izixhobo zendawo yokusebenzela	Imisebenzi yezobugcisa	Impahla yexabiso eqeshisiweyo (izixhobo zase-ofisini, umhlaba nezakhiwo)	Imali iyonke
	R	R	R	R	R	R	R	R	R
Imali ekhoyo ngowoku-1 kuTshazimpuzi ngo-2017	1 549 792	27 058	2 424 897	985 305	26 844 683	63 839	450 974	70 401 232	102 747 780
Ubukhulu bemali ekhoyo	4 685 455	27 058	12 474 364	2 729 437	52 579 084	521 537	450 974	122 827 900	196 295 809
Ukuhla kwexabiso okuyintlanganisela	(3 135 663)	-	(10 049 467)	(1 744 132)	(26 158 708)	(457 698)	-	(54 483 306)	(96 028 974)
I-WIP	-	-	-	-	424 307	-	-	2 056 638	2 480 945
Izongezo	466 887	-	760 103	590 251	1 031 978	37 514	-	13 606 445	16 493 178
Ulungelelaniso lwexabiso elifanelekileyo lintlawulo	-	-	-	-	-	-	-	-	-
Ukuchithwa kwempahla I-WIP	-	-	-	-	(424 307)	-	-	(2 056 638)	(2 480 945)
Ukuhla kwexabiso okubuyiselwayo	(610 211)	-	(1 417 562)	(493 831)	(9 675 417)	(48 475)	-	(11 393 822)	(23 639 318)
Ukukhulwa	30 826	-	836 658	271 465	1 281 234	137 310	-	5 325 819	7 883 312
lindleko	(25 773)	-	(34 521)	(9 360)	(3 011)	-	-	-	(72 665)
Ukuhla kwexabiso okuyintlanganisela	(562 785)	-	(369 333)	(101 431)	(36 482)	-	-	-	(1 070 031)
Ukuhla kwexabiso okuyintlanganisela	537 012	-	334 812	92 071	33 471	-	-	-	997 366
Imali ekhoyo ngowama-31 kweyoKwindla ngo-2018	1 411 521	27 058	2 569 575	1 343 830	19 055 160	190 188	450 974	75 883 036	100 931 342
Ubukhulu bemali ekhoyo	4 589 557	27 058	12 865 134	3 218 257	53 574 580	559 051	450 974	136 434 345	211 718 956
Ukuhla kwexabiso okuyintlanganisela	(3 178 036)	-	(10 295 559)	(1 874 427)	(34 519 420)	(368 863)	-	(60 551 309)	(110 787 614)
I-WIP	-	-	-	-	-	-	-	-	-
Izongezo	-	-	641 678	327 211	314 121	29 786	-	447 385	1 760 181
Ulungelelaniso lwexabiso elifanelekileyo lintlawulo	-	-	-	-	-	-	-	-	-
I-WIP	-	-	-	-	-	-	-	26 916 353	26 916 353
Ukuhla kwexabiso okubuyiselwayo	(660 223)	-	(925 274)	(621 091)	(8 921 113)	(65 640)	-	(13 577 829)	(24 771 170)
Ukukhulwa	435 205	-	267 363	197 456	4 655 731	7 026	-	1 001 733	6 564 514
lindleko	(11 149)	-	(3)	(4 497)	(168 424)	-	-	-	(184 073)
Ukuhla kwexabiso okuyintlanganisela	(149 537)	-	(52 831)	(25 424)	(2 448 778)	-	-	-	(2 676 570)
Ukuhla kwexabiso okuyintlanganisela	138 388	-	52 828	20 927	2 280 354	-	-	-	2 492 497
Imali ekhoyo ngowama-31 kweyoKwindla ngo-2019	1 175 354	27 058	2 553 339	1 242 909	14 935 475	161 360	450 974	90 670 678	111 217 147
Ubukhulu bemali ekhoyo	4 440 020	27 058	13 453 981	3 520 044	51 439 923	588 837	450 974	136 881 730	210 802 567
Ukuhla kwexabiso okuyintlanganisela	(3 264 666)	-	(10 900 642)	(2 277 135)	(36 504 448)	(427 477)	-	(73 127 405)	(126 501 773)
I-WIP	-	-	-	-	-	-	-	26 916 353	26 916 353

Umhlaba nezakhiwo ziquka:

1. Rem of Portion 3 of ERF 615 of Brickfield
2. Portion 3 of ERF 10635 of Durban

Umhlaba nezakhiwo zibhaliswe egameni leSebe leMisebenzi kaRhulumente. IPlayhouse Company iqesha umhlaba nezakhiwo kwiSebe leMisebenzi kaRhulumente.

Ixabiso lobomi, inkqubo yokuhla kwexabiso, nexabiso lentsalela yempahla yexabiso liyavanywa rhoqo ngonyaka kwaye kwenziwa ulungelelaniso kwezi zinto xa oko kuyimfuneko.

Iindleko zokukhathalela nokulungisa izinto zabaniki beenkonzo bangaphandle zifikelele kwi-R2,119,733 (2018 : R2,359,785).

Imivuzo yabasebenzi bangaphakathi abalungisayo ifikelele kwi-R4,858,781 (2018 : R4,394,096).

Ayikho impahla yexabiso ekubanjiswe ngayo ematyaleni.

Amanqaku Eengxelo Zemali Zonyaka (Iiyaqhutywa)

	I-software	Imali iyonke
2.3. Impahla yexabiso ezinzileyo	R	R
Imali ekhoyo ngowoku-1 kuTshazimpuzi ngo-2017	799 076	799 076
Ubukhulu bemali ekhoyo	1 392 290	1 392 290
Ukuhlawulwa kwamatyala okuyintlanganisela	(593 214)	(593 214)
Izongezo	62 077	62 077
Ukuhlawulwa kwamatyala	(463 818)	(463 818)
Ukuhlawulwa kwamatyala okubuyiselwayo	10 253	10 253
Ukulahlwa	-	-
lindleko	-	-
Ukuhlawulwa kwamatyala okuyintlanganisela	-	-
Imali ekhoyo ngowama-31 kweyoKwindla ngo-2018	407 588	407 588
Ubukhulu bemali ekhoyo	1 454 367	1 454 367
Ukuhlawulwa kwamatyala okuyintlanganisela	(1 046 779)	(1 046 779)
Izongezo	106 090	106 090
Ukuhlawulwa kwamatyala	(356 498)	(356 498)
Ukuhlawulwa kwamatyala okubuyiselwayo	443 811	443 811
Ukulahlwa	-	-
lindleko	-	-
Ukuhlawulwa kwamatyala okuyintlanganisela	-	-
Imali ekhoyo ngowama-31 kweyoKwindla ngo-2019	600 991	600 991
Ubukhulu bemali ekhoyo	1 560 457	1 560 457
Ukuhlawulwa kwamatyala okuyintlanganisela	(959 466)	(959 466)
Ukuhlawulwa kwamatyala kuqukwa kunye nokuhla kwexabiso.		
	eyoKwindla	eyoKwindla
	2019	2018
	R	R
3. Izintlu zempahla		
Ukutya	113 371	135 507
Indawo yokusebenzela	183 902	254 305
Impahla enxitywayo	94 436	96 138
Iindawo zokugcina jikelele	123 354	119 290
Imali iyonke	515 063	605 240
4. Urhwebo nezinye izinto ezifunyanwayo		
Izinto zorhwebo ezifunyanwayo	704 275	505 132
Abasebenzi abatyelayo	5 434	7 833
Ezinye izinto ezifunyanwayo	1 827 558	1 546 584
	2 537 267	2 059 549
Nganeno: Ukuphelisa amatyala	(414 464)	(177 370)
Imali iyonke	2 122 803	1 882 179
4.1. Intshukumo kulungiselelo lokuchithwa kwezinto zorhwebo ezifunyanwayo		
Imali eseleyo ngowoku-1 kuTshazimpuzi	177 370	122 522
Ulungiselelo lokuchithwa kwezinto ezifunyanwayo	218 659	54 848
Izinto ezifunyanwayo ezicinyiweyo kulo nyaka njengezingaqokelelekiyo	18 435	-
Imali engasebenzanga ebuyiselwa emva	-	-
Ukuconjululwa kwesaphulelo	-	-
Imali eseleyo ngowama-31 kweyoKwindla	414 464	177 370

Amanqaku Eengxelo Zemali Zonyaka (Iiyaqhutywa)

	eyoKwindla 2019	eyoKwindla 2018
	R	R
5. Imali eziinkozo nemali elingana nayo ekhoyo ekupheleni konyaka		
Imali ekhoyo efumaneka msinyane	28 917 875	17 747 955
Utyalo-mali - iidiphozithi eziqingqiweyo	59 141 461	72 071 384
Imali eziinkozo efumaneka kwiintsuku ezingama-30	4 328 500	26 389 787
Imali eziinkozo efumaneka kwiintsuku ezingama-60	22 489 210	3 000 000
Imali eziinkozo efumaneka kwiintsuku ezingama-90	32 323 751	42 681 597
Imali iyonke	88 059 336	89 819 339
Yimali engama-R274 966 nama-R30 360 ebanjiswe njengeziqinisekiso ezikhutshwe ngu-FNB egameni lePlayhouse Company nekuzezikaMasipala waseThekwini nePostmaster ngokulandelana kwazo. Ezi ziqinisekiso ziza kuphelelwa ngomhla wama-31 kweyoMnga ngo-2025 yaye azisayi kuvuselelwa.		
6. Umvuzo orhoxisiweyo		
Isibonelelo esifunyenwe ngaphambi kwexesha		
ISEbe likaZwelonke lezoBugcisa neNkcubeko	15 255 246	10 885 416
Imali iyonke	15 255 246	10 885 416
7. Urhwebo nezinye izinto ezihlawulwayo		
Izinto zorhwebo ezihlawulwayo	1 477 710	3 212 370
Ezinye izinto ezihlawulwayo nezongezelelweyo	3 468 812	2 883 303
Umvuzo wekhefu owongezelelweyo	2 749 454	2 068 960
Ibhonasi eyongezelelweyo	1 008 291	906 542
Imali iyonke	8 704 267	9 071 175
8. Amaziko enkonzo nezixhobo		
Ukuqeshiswa kweendawo zemiboniso, iikhostyum, iisethi, kunye neqonga elijikelezayo	2 980 474	3 260 527
Ingeniso yendawo yokubhukishela izihlalo	1 773 447	803 868
Irenti efunyenweyo	553 085	476 475
Intengiso kwindawo yentselo kunye neyezinye izinto	441 701	483 106
Imisitho	472 918	307 503
Ikhomishini yendawo yokubhukishela izihlalo - iimveliso zangaphandle	475 689	236 542
Inzuzo yokuthengiswa kwezithuthi	-	301 968
Enye ingeniso - eyolawulo, ikhomishini yentengiso yamatikiti	458 313	362 008
Imali iyonke	7 155 627	6 231 997
9. Izibonelelo		
ISEbe likaZwelonke lezoBugcisa neNkcubeko (DAC)	49 274 000	49 838 000
Isibonelelo senkcitho eyodwa yenkunzi - (DAC)	27 840 171	5 298 384
ISEbe lezoBugcisa neNkcubeko laseKZN	8 657 000	8 174 000
Umasipala waseThekwini	-	750 000
Imali iyonke	85 771 171	64 060 384

Amanqaku Eengxelo Zemali Zonyaka (liyaqhutywa)

	Amanqaku	eyoKwindla 2019	eyoKwindla 2018
		R	R
10. Ukuhla kwexabiso nokuhlawula amatyala			
Ukuhla kwexabiso lepropati, oomatshini nezixhobo:		18 206 656	15 756 006
Izithuthi		660 223	610 211
Ifanitshala yase-ofisini nezinye izixhobo		925 274	1 417 562
Izixhobo zeekhompyutha		621 091	493 831
Izixhobo zeqonga		8 921 113	9 675 417
Izixhobo zendawo yokusebenzela		65 640	48 475
Impahla yexabiso eqeshisiweyo		13 577 829	11 393 822
		24 771 170	23 639 318
Ukubuyisela ixabiso elihlileyo		(6 564 514)	(7 883 312)
Ukuhlawula amatyala		(87 313)	453 565
Impahla yexabiso engenakuchukunyiswa		356 498	463 818
Ukubuyisel'ixabiso ngokuhlawula amatyala		(443 811)	(10 253)
Imali iyonke		18 119 343	16 209 571
11. Iindleko zabasebenzi			
Imivuzo		26 052 781	24 301 591
Iindleko zamaxesha athile		2 338 372	1 900 062
Isibonelelo somhlala-phantsi		3 730 428	3 451 944
Isibonelelo sezonyango		835 749	814 591
I-Ujif		167 795	167 625
Ibhonasi (Itshekhi ye-13)		2 164 341	1 972 348
Ukusebenza ixesha elongezelelweyo		229 537	147 313
Ikhofu		813 714	(479 786)
Isibonelelo sezindlu		892 000	873 000
Amawonga enkonzo yexesha elide		26 460	36 180
Imali iyonke		37 251 177	33 428 138

Amanqaku Eengxelo Zemali Zonyaka (Iiyaqhutywa)

	Amanqaku	eyoKwindla 2019	eyoKwindla 2018
		R	R
12. lindleko gabalala			
lindleko zophicotho-zincwadi		1 352 542	1 443 072
lindleko zebhanki		159 641	143 767
linkomfa nokuthunywa		107 979	64 185
lindleko zabacebisi		25 300	7 638
Izinto ezisebenziseka ziphele		905 114	1 066 850
Council - attendance		113 013	62 355
Council - travel		551 703	180 915
Amafutha ne-oyile		169 344	30 910
Ilahleko yokutshiitsha imali yamanye amazwe (ilifti zeqonga le-opera)		754 473	-
I-inshorensi		438 353	265 002
lindleko zomthetho		181 988	23 881
lindleko zeempepha-mvume zezithuthi		264 444	280 909
Ilahleko kwintengiso yempahla yexabiso		184 073	71 632
lindleko zentengiso		1 196 792	1 440 296
Ezinye iindleko		1 322 302	928 085
lindleko zokuprinta nezezinto zokubhala		368 484	326 382
lindleko zobuchule		623 624	534 713
lindleko zokuzibophelela ukuhlawula imali ixesha elithile nezoshicilelo		59 370	72 494
lindleko zomnxeba		252 132	478 988
lindleko zoqeqesho		306 661	293 412
lindleko zeehambo nokutya ngaphaya kwemida yeli lizwe		521 184	200 646
lindleko zeehambo nokutya ngaphakathi kweli lizwe		537 224	635 413
Iyunifom nee-ovaroli		182 878	214 449
Amanzi		533 113	314 004
Imali iyonke		11 111 731	9 079 997
13. lindleko zokukhathalela impahla			
Izakhiwo		1 516 877	1 704 261
Izixhobo zokucim'umlilo		97 113	62 609
Izithuthi		270 449	319 518
Izixhobo zokusebenza noomatshini		227 232	251 356
lindleko gabalala		8 062	22 041
Imali iyonke		2 119 733	2 359 785

Amanqaku Eengxelo Zemali Zonyaka (liyaqhutywa)

	Amanqaku	eyoKwindla 2019	eyoKwindla 2018
		R	R
14. lindleko zokuvelisa			
limveliso namatheko		19 784 076	14 142 382
lindleko zolawulo		175 655	65 196
lindleko zophapho nezeendawo zokulala		865 173	1 010 800
Imirhumo yamagcisa		13 611 394	9 234 798
lindleko zentengiso nezopapasho		2 205 366	1 088 422
Izinto zokusebenza		593 015	548 484
Izixhobo nokuqesha indawo		645 572	297 256
Imivuzo yamagcisa neempepha-mvume		164 831	111 273
lindleko zeehambo nokutya		1 523 070	1 786 153
Ukuqeshisa ngaphandle		173 045	56 389
Iqonga elijikelezayo		7 023	25 218
Imali iyonke		19 964 144	14 223 989
15. Intsalela (Intsilelo) yonyaka			
Intsalela (Intsilelo) yonyaka ka-2019 neka-2018 inika ingqwalasela ukwamkelwa kwengeniso eyinkunzi ngokweGRAP 23 - Ingeniso yerhafu engeyiyo eyentengiselwano yolwananiso nentlawulo.			
Igatyama lama-53(3) loMthetho woLawulo lweMali kaRhulumente, 1999 liyalela ukuba iziko likarhulumente alinako ukuqingqa imali ukulungiselela intsilelo yaye alinako ukwenza intsalela lingayifumananga imvume ebhaliweyo evela kuNondyebo kaZwelonke.			
Iziko iPlayhouse Company lifumene imvume kuNondyebo kaZwelonke yokuyigcina intsalela ekhoyo.			
16. Ukumanya ingxelo yeenguqu kwimpahla yexabiso eyintsalela			
Imali eseleyo ngowama-31 kweyoKwindla		267 715 001	262 019 097
Yakhiwe ngolu hlobo lulandelayo:			
I-GRAP 23 Isibonelelo sikarhulumente esamkelwa ngokusebenzisa umhlaba nezakhiwo simahla		141 900 000	141 900 000
Iinguqu kwimpahla yexabiso eyintsalela enxulumene nemisebenzi		125 815 001	120 119 097
17. Ukumanya imali eziinkozo eyenziweyo			
Intsalela (Intsilelo) yonyaka		4 866 730	(4 750 074)
Ilungiselelwe:			
Ukuhla kwexabiso, ukuhlawula amatyala nokuchithwa kwempahla		18 119 343	16 209 570
Inzuzo yokuchithwa kwepropati, oomatshini nezixhobo		184 073	(230 336)
Inzala efunyenweyo		(7 036 227)	(7 381 834)
Imali engenayo yokusebenza ngaphambi kweenguqu zemali eyinkunzi esebenzayo		16 133 920	3 847 326
Iinguqu zemali eyinzala esebenzayo		3 023 301	(4 375 878)
Ukuhla (Ukunyuka) kwezintlu zempahla		90 177	(68 363)
Ukunyuka kweeahawunti ezifunyanwayo		(240 624)	(515 913)
(Ukuhla) Ukunyuka kweeahawunti ezihlawulwayo		(366 908)	486 780
Ukunyuka (Ukuhla) komvuzo orhoxisiweyo		4 369 829	(4 278 382)
Imali eziinkozo engenileyo (esetyenzisiweyo) evela kwimisebenzi		19 986 394	(528 552)

Amanqaku Eengxelo Zemali Zonyaka (Iiyaqhutywa)

	eyoKwindla 2019	eyoKwindla 2018
	R	R

18. Izixhobo zemali

Inkcazelo emfutshane

Ngokusebenzisa izixhobo zemali iPlayhouse Company iba sesichengeni sobu bungozi bulandelayo.

- Ubungozi bamatyala
- Ubungozi bokutshona
- Ubungozi boshishino
- Ubungozi bamandla emali

Eli nqaku linika iinkcukacha zobhenco lwePlayhouse Company kubungozi ngabunye kobu budweliswe apha ngasentla, iinjongo zePlayhouse Company, imigaqo-nkqubo neenkqubo zayo zokulinganisa nokulawula ubungozi kwakunye nendlela eyilawula ngayo imali yayo eyinkunzi iPlayhouse Company. Kwezi ngxelo zemali kuqukwe nezinye izinto ezibhengezwayo.

UMmiselo kaNondyebo kaZwelonke wama-27.2.1, okhutshwe ngokuyalela kwePFMA uyalela ukuba kufuneka igunya elinika ingxelo (iBhunga) liqinisekise ukuba kwenziwa uvavanyo lobungozi rhoqo ukuze buhle bubhaqwe kwangoko ubungozi obuvelayo kwiziko. IBhunga lisungule iKomiti yoPhicotho-zincwadi evelisa ize yongamele imigaqo-nkqubo yePlayhouse Company yolawulo lobungozi.

Imigaqo-nkqubo yePlayhouse Company yolawulo lobungozi isungulwe ukuze yalathe ize icalule ubungozi ejamelene nabo iPlayhouse Company, ukumisa imida nolawulo olufanelekileyo kunye nokongamela ubungozi nokuthobela imida. Imigaqo-nkqubo neenkqubo zolawulo lobungozi ziyaphononongwa rhoqo ukuze zibonise iinguqu kwiimeko zoshishino nakwimisebenzi yePlayhouse Company. IPlayhouse Company izimisele ukuvelisa imeko yolawulo enengqeqesho neyakhayo eyenza bonke abasebenzi baluqonde uxanduva nemisebenzi yabo yaye ikwenza oku ngokusebenzisa iinkqubo nemigangatho yayo yoqeqesho nolawulo.

Ikomiti yophicotho-zincwadi ihlola indlela abaphathi abakuqwalasela ngayo ukuthobela imigaqo-nkqubo neenkqubo zolawulo lobungozi zePlayhouse Company ize iphonononge inkqubo-sikhokelo yolawulo lobungozi ngokunxulumene nobungozi ejamelene nabo iPlayhouse Company. IKomiti yoPhicotho-zincwadi incediswa licandelo loPhicotho-zincwadi lwaNgaphakathi kuxanduva lwayo lokongamela imisebenzi. Uphicotho-zincwadi lwangaphakathi lwenza uphononongo olwenziwa rhoqo nolo lulungiselelwe injongo ethile lolawulo neenkqubo zobungozi zize iziphumo zixelwe kwiKomiti yoPhicotho-zincwadi.

Ubungozi bamatyala

Ubungozi bamatyala bubungozi belahleko yemali kwiPlayhouse Company obuvela xa umthengi okanye ilungu elingugxa welinye besilela ukuhlangabezana neemfaneko zabo zesivumelwano kuze oko kuvele kwizinto zePlayhouse Company ezifunyanwa kubathengi.

Inzuzo yempahla yexabiso eyimali ibeka iziko esichengeni esikhulu sobungozi bamatyala. Ukuba sesichengeni esikhulu sobungozi bamatyala ngowama-31 kweyoKwindla bekumi ngolu hlobo:

Urhwebo nezinye izinto ezifunyanwayo (inqaku 4)

2 122 803

1 882 179

Urhwebo nezinye izinto ezifunyanwayo

Ukuba sesichengeni kwePlayhouse Company sobungozi bamatyala kuphenjelelwa kakhulu ziimpawu zomthengi ngamnye. Uluhlu lwabathengi lwePlayhouse Company kuquka nobungozi bokusilela ukuhlawulwa kwamatyala kwishishini kunye nelizwe abasebenza kulo abathengi, zizinto ezi ezingenafuthe lingako kubungozi bamatyala.

Ubuninzi bezinye izinto ezifunyanwayo nenzuzo zinxulumene nengeniso yenzala efunyanwa kumaziko emali ngemali etyalwe kwiidiphozithi eziqingqiweyo.

Iimali ezityalwa ngokorhwebo ziquka imali engekahlawulwa yezi nkonzo zilandelayo:

Ukuqeshwa kwelori - iidiphozithi okanye iinombolo zeodolo zifunyanwa ngaphambi kokuba ilori iqeshiselwe imisitho yenkcubeko.

Irenti - lidiphozithi ezihlawulwe ngabantu abaqeshileyo ziyagcinwa.

Ukuqeshiswa kwendawo yokubambela imisitho - lidiphozithi zifunyanwa kwantlandlolo.

Impahla yemiboniso/impahla yeqonga/ukuqeshisa ngeewigi - imirhumo ifunyanwa ngaphambi kokuqeshiswa kwezinto.

Intengiso yamatikiti - imali ifunyanwa kwintengiso yamatikiti emnyango okanye eComputicket.

Umgaqo-nkqubo wePlayhouse Company uqwalasela umngcipheko wayo wobungozi bamatyala rhoqo ngenyanga. Xa kuphela unyaka owona mngcipheko mkhulu wobungozi bamatyala uxelwa linani eliyinzuzo lempahla yexabiso eyimali nganye.

Amanqaku Eengxelo Zemali Zonyaka (liyaqhutywa)

	eyoKwindla 2019	eyoKwindla 2018
	R	R
18. Izixhobo zemali (liyaqhutywa)		
<i>Ubungozi bamatyala (liyaqhutywa)</i>		
Ukubalwa kokuxatyiswa ngobulungisa korhwebo nezinye izinto ezifunyanwayo kuyenziwa kodwa ulungelelwaniso alwenziwa njengoko inani lolungelelwaniso lingaphatheki.		
Ingcalulo yorhwebo nezinye izinto ezifunyanwayo ngenjongo yokunik'ingxelo:		
lintsuku ezingama-90 nangaphezulu	486 766	217 195
lintsuku ezingama-60	25 553	16 571
lintsuku ezingama-30	40 440	94 644
Imali ekhoyo	1 570 044	1 553 769
	<u>2 122 803</u>	<u>1 882 179</u>

Utyalo-mali

Iziko iPlayhouse Company licutha umngcipheko walo wobungozi bamatyala ngokutyala imali kuphela kwiziqinisekiso ezinokuthengiswa lula kwiibhanka nakumaziko emali avunyiweyo kuphela.

Iziqinisekiso

Umqaqo-nkqubo wePlayhouse Company kukunika iziqinisekiso zemali kwiinkonzo ezixeliweyo kuphela.

Iziqinisekiso ezikhutshiweyo ngomhla wama-31 kweyoKwindla ngo-2019 zimi ngolu hlobo:

Iziqinisekiso zeenkono zikaMasipala waseThekwini - R274 966

Iziqinisekiso zeenkono zePostmaster - R30 360

Ezi ziqinisekiso ziza kuphelelwa ngomhla wama-31 kweyoMnga 2025 kwaye azisayi kuvuselelwa.

Ubungozi bokutshona

Ubungozi bokutshona bubungozi obuchaza ukuba iPlayhouse Company ayinakukwazi ukuhlawula iimfanelo zayo zemali ngexesha elifanelekileyo. Indlela iPlayhouse Company ekuthintela ngayo ukutshona kukuqinisekisa ukuba isoloko inemali eyaneleyo ukuze ikwazi ukuhlawula amatyala ayo ngexesha phantsi kweemeko zesiqhelo nezoxinzelelo ngaphandle kokwenza ilahleko engeyomfuneko okanye ukubeka esichengeni igama lePlayhouse Company.

IPlayhouse Company ihlawula amatyala ayo rhoqo ngeveki. Lwenziwa kwantlandlolo uvavanyo lwamatyala afuna ukuhlawulwa. Kuye kufakwe imali kwiakhawunti yebhanka ukuze ihlawule amatyala rhoqo ngeveki. Intsalela ityalwa inyanga nenyanga kutyalo-mali olunika inzala encumisayo.

Umqaqo-nkqubo wePlayhouse Company uhambisana noweSebe lezoBugcisa neNkcubeko likaZwelonke kukungabolekisi ngemali. Ngoko ke akukho matyala avulwayo kweli ziko.

Imali ekhoyo ngomhla wama-31 kweyoKwindla ngo-2019 ibingama-R88 059 336 (2018 - R89 819 339).

Ubungozi boshishino

Ubungozi boshishino bubungozi obuguqulwa ngamaxabiso orhwebo afana nokokuba inzala yemali-mboleko iyayichaphazela ingeniso yePlayhouse Company. Injongo yolawulo lobungozi boshishino kukulawula umngcipheko wobungozi boshishino ukwimida eyamkelekileyo lo gama kuphuculwa ingeniso.

Umqaqo-nkqubo wePlayhouse Company ohambisana noweSebe likaZwelonke lezoBugcisa neNkcubeko kukuyityala imali eziinkozo eyintsalela. Inzala encumisayo namaxesha okutyala imali ayafumaneka kwiibhanka eziliqela. Kuye kwenziwe isiphakamiso sokwenza oku size sivunye ngabaphathi abayintloko.

Ubungozi bamandla emali

Ubungozi bamandla emali bubungozi bokokuba ixabiso elifanelekileyo okanye ukungena kwemali kwixa elizayo kwesixhobo semali kuya kuguquguquka ngenxa yeenguqu ezenzeka kwiqondo lokutshintshwa kwemali yamazwe ngamazwe. Iziko iPlayhouse Company libhentsiswa kubungozi bamandla emali kukuthenga kwalo izixhobo zokusebenza kwamanye amazwe. Ezi ntengiselwano zidla ngokwenziwa ngeYuro (EUR). Umqaqo-nkqubo wolawulo lobungozi wePlayhouse Company awukuvumeli ukuthabatha izivumelwano zotshitshiselwano ezihamba phambili.

Ubungozi beqondo lenzala yemali-mboleko

Umqaqo-nkqubo wePlayhouse Company uhambisana noweSebe likaZwelonke lezoBugcisa neNkcubeko awukuvumeli ukubolekisa ngemali. Ngoko ke akukho matyala avulwayo kweli ziko. Akukho bungozi bunxulumene neenguqu kwiqondo lenzala yemali-mboleko kweli ziko.

Amanqaku Eengxelo Zemali Zonyaka (Iiyaqhutywa)

18. Izixhobo zemali (Iiyaqhutywa)

Ubungozi beqondo lenzala yemali-mbolekoi (Iiyaqhutywa)

Umqaqo-nkqubo wePlayhouse Company ohambisana neSebe lezoBugcisa neNkcubeko likaZwelonke uyalela ukuba ityalwe imali eziinkozo eyintsalela. Inzala encumisayo namaxesha okutyala imali ayafumaneka kwiibhanka eziliqela. Kuye kwenziwe isiphakamiso sokwenza oku size sivunye ngabaphathi abayintloko.

Iprofayili

Isixhobo seqondo lenzala eguququkayo
FNB - iintsuku ezili-120
Investec - iintsuku ezili-120 eziqingqiweyo
Nedbank - iintsuku ezili-120 eziqingqiweyo
Standard Bank - iintsuku ezili-120

2019		2018	
Iqondo lenzala %	Imali ekhoyo	Iqondo lenzala %	Imali ekhoyo
7,80	4 328 500		2 000 000
7,85	23 211 191	7,85	21 058 022
7,95	28 601 770	7,90	21 637 330
7,83	3 000 000	7,94	27 376 032
	59 141 461		72 071 384

Ngomhla wama-31 kweyoKwindla ngo-2019, ukuba ngaba iqondo lenzala yemali-mbolekoi belimi kumanqaku ali-100 ngaphezulu okanye ngaphantsi kwakunye nazo zonke ezinye izinto eziguququkayo zimi ndawonye ingeniso ibiza kwanda okanye inciphe ngama-R 591 414.

Ngomhla wama-31 kweyoKwindla ngo-2019 imali eziinkozo nenye imali elingana nayo, izinto zorhwebo ezifunyanwayo norhwebo nezinye izinto ezihlawulwayo zithelekelelwa amaxabiso azo afanelekileyo ngenxa yokuvuthwa kwazo ngexesha elifutshane. Izinto zorhwebo ezifunyanwayo nezihlawulwayo ziza kuvuthwa kwiintsuku ezingama-30 ukusa kwezingama-60.

Amaxabiso afanelekileyo

Amaxabiso afanelekileyo empahla yexabiso kunye namatyala ayafana namaxabiso enzuzo aboniswe kwiphepha elibonisa imali eseleyo.

19. Ukungahlawuliswa irhafu

Iziko iPlayhouse Company aliyihlawuliswa irhafu ngokungqinelana noko kuyalelwa liCandelo le-10 (1)(cA)(l) loMthetho weNgeniso yeRhafu.

20. Abaphathi abayintloko kunye nebhunga

Abaphathi abayintloko

L Bukhosini - (iNgqonyela kwanoMlawuli wezobugcisa)

Umvuzo
Ibhonasi
Isibonelelo somhlala-phantsi nesezonyango
Ezinye (iihambo, umnxeba ophathwayo, njl njl)

	eyoKwindla 2019	eyoKwindla 2018
	R	R
	2 168 640	2 031 462
Umvuzo	1 727 139	1 621 726
Ibhonasi	143 928	135 144
Isibonelelo somhlala-phantsi nesezonyango	284 978	267 585
Ezinye (iihambo, umnxeba ophathwayo, njl njl)	12 595	7 007
	1 489 537	1 430 033
A Mohanparasadh - (iGosa eliyiNtloko yezeMali)		
Umvuzo	1 299 970	1 219 389
Ibhonasi	108 450	101 616
Ezinye (iihambo, umnxeba ophathwayo, isibonelelo sokubambela esikhundleni njl njl)	81 117	109 028
	1 323 640	1 211 707
O Hlangu - (uMlawuli weenkonzozo zenkxaso)		
Umvuzo	936 477	879 321
Ibhonasi	78 040	73 277
Isibonelelo somhlala-phantsi nesezonyango	172 591	163 160
Ezinye (iihambo, umnxeba ophathwayo, isibonelelo sokubambela esikhundleni njl njl)	136 532	95 949
	4 981 817	4 673 202

Abaphathi abayintloko bebonke

Amanqaku Eengxelo Zemali Zonyaka (liyaqhutywa)

	eyoKwindla 2019	eyoKwindla 2018
	R	R
20. Abaphathi abayintloko kunye nebhunga (liyaqhutywa)		
Amalungu ebhunga naweekomiti eziphantsi kwalo	113 013	62 355
HC Mgabadelo - uSihlalo weBhunga	23 398	23 536
L Theron* ^X - uSihlalo wekomiti yophicotho-zincwadi	-	-
S Gounden	14 228	4 784
C Jugnarayan*	7 981	4 706
N Mbele	8 068	4 656
FE Khumalo	192	5 601
TC Mngadi	14 100	2 456
JA Litheko	14 100	2 456
SP Ndlela	10 598	5 884
J Bernard	4 480	2 456
S Naidoo	320	5 820
R Ashe*	10 340	-
F Wetes ^X	-	-
K Kunene ^X	-	-
L Matlala ^{**X}	5 208	-
Imivuzo iyonke	5 094 830	4 735 557
* Ilungu langaphandle elizimeleyo leKomiti yoPhicotho-zincwadi.		
** Ifunyenwe imvume yokuzuzisa imirhumo nezibonelelo.		
^X Ngumntu ophangela eburhulumenteni.		

21. Izibonelelo zomhlala-phantsi

Abasebenzi abasisigxina bayinxalenye yengxowa yomhlala-phantsi eyasungulwa yiPerforming Arts Companies of South Africa okanye ingxowa yesibonelelo eyasungulwa yimanyano yabasebenzi iSouth African Commercial Catering and Allied Workers Union. Ingxowa-mali yomhlala-phantsi neyesibonelelo zilawulwa nguMthetho weNgxowa-mali yoMhlala-phantsi. Ingxowa-mali yesibonelelo izizicwangciso ezichazwayo zokunikela kwaye ayifuni kuxatyiswa ngamaxesha athile.

Umnikelo kwingxowa-mali yesibonelelo somhlala-phantsi yi-R3 730 428 (2018: R3 451 944) yaye uqukwa kwiindleko zabasebenzi.

22. Amaqela anonxulumano

22.1. ISebe likaZwelonke lezoBugcisa neNkcubeko

Izibonelelo ezifunyenwe leli ziko kulo nyaka-mali zifikelela kuma-R49 274 000, kunyaka-mali ka-2019/20 ziza kufikelela kuma-R51 749 000 emva kokuba zehliswe ngama-R3 933 000. Imali ebalelwa kwi-R1 500 000 (2018: R1 936 000) ishicilelwe njengenxaso-mali elungiselelwe iiprojekthi zokufukama.

22.2. ISebe lezoBugcisa neNkcubeko laseKZN

Isibonelelo esifunyenwe kunyaka-mali ka-2018/19 sibalelwa kwi-R8 657 000, yaye esonyaka-mali ophelayo ka-2019/20 siza kuba zi-R9 141 000.

22.3. Umasipala waseThekwini

Kufunyenwe intlawulo ye-R3 000 000 kwisithuba esiphakathi komhla woku-1 kweyeKhala ngo-2016 ukusa kowama-30 kweyeSilimela ngo-2017 ngokungqinelana nonyaka-mali woomasipala. Imali efikelela kuma-R750 000 yenyanga kaTshazimpuzi, ekaCanzibe neyeSilimela 2017 irhoxiselwe unyaka-mali ka-2017/18. Intlawulo yenkxaso-mali engama-R0 (2018: R750 000) ishicilelwe njengengeniso.

22.4. ISebe leMisebenzi kaRhulumente

Eli Sebe lilo elingumnini osemthethweni womhlaba nezakhiwo ezisetyenziswa yiPlayhouse Company kwaye iPlayhouse Company ayikuhluleli ukusebenzisa lo mhlaba nezakhiwo. Eli Sebe lihlawule irhafu yalo nyaka ngolu hlobo: R5 351 380 (2018: R6 913 892).

Amanqaku Eengxelo Zemali Zonyaka (Iiyaqhutywa)

	eyoKwindla 2019	eyoKwindla 2018
	R	R

22. Amaqela anonxulumano (Iiyaqhutywa)

22.5. I-KwaZulu Natal Philharmonic Orchestra - KZNPO

Ngaphambi konyaka ka-1999 iPlayhouse Company eyayisaziwa ngokuba yiNatal Performing Arts Council (NAPAC) ngelo xesha yayineenkampani Ngomhla woku-1 kuTshazimpuzi ngo-1998 iPlayhouse Company yabuhlisa ubukhulu bomsebenzi wayo ngokungqinelana neenqobo eziqulethwe liPhepha leNgcaciso yoMgaqo-nkqubo leSebe lezoBugcisa, iNkcubeko, ezobuNzululwazi noBuchwepheshe. Olu hlengahlengiso lwaluphenjelelwa ziinjongo ezimbini ezingundoqo: ukucutha ukubeka bucala imali yentsilelo kunye nokumiliselela izicwangciso zokuthintela ukubakho kwentsilelo kwixa elizayo. Enye yeendlela eli ziko elizicutha ngayo iindleko ibe kukubhalisa iKZNPO njengeziko elizimeleyo elingenzi nzuzo leCandelo lama-21 loMbutho wamaziko angenzi nzuzo. Ukwenziwa kwezi nguqu kukhokelele ekubeni le mibutho mibini ivumelane ukuba isebenzisane kubudlelwane obuza kuwazuzwa omabini.

Kukho isivumelwano sentsebenziswano esityikitywe yiPlayhouse Company neKZNPO. Esi sivumelwano siquka ezi zinto zilandelayo:

- Ukusebenzisa inxalenye yesakhiwo esebenzela kuso iPlayhouse Company.
- Ukufikelela kwiinkonzo zemali nezemicimbi yabasebenzi abazihlawulelayo.
- Njengenxalenye yenkqubo yokulungiswa ngokutsha ngo-1999 impahla yexabiso (izixhobo ze-orchestra, imibhalo-ngqangi namanqaku ezixabiso ama-R328 739 zanikelwa kwiKZNPO simahla.
- IPlayhouse Company ifumana isaphulelo kwiinkonzo zobugcisa ezinikwa yiKZNPO ePlayhouse Company.

Ngomhla wama-31 kweyoKwindla ngo-2019 iziko iPlayhouse Company neKZNPO afikelele esigqibeni sokusicima isivumelwano sentsebenziswano phakathi kwala maziko mabini.

IPlayhouse Company isebenzise iinkonzo zeKZNPO kwiimveliso eziliqela ngobuchule nemvisiswano enceda la maziko omabini ukuze anike iinkonzo ngokwegunya leziko ngalinye.

Iintlawulo ezenziwa yiPlayhouse Company kwiKZNPO	1 843 755	1 915 356
Inzuzo yePlayhouse Company	0	209 587
Iintlawulo ezenziwa yiKZNPO kwiPlayhouse Company	397 393	515 546

I-KZNPO kuphela kweorkhestra enika iinkonzo ezikumila kunje KwaZulu-Natala. Ukusebenzisa iziko lasekuhlaleni konga imali nto leyo inciphisa iindleko zohambo nezokulala.

Ingqonyela yeKZNPO itshate neNgqonyela yeziko iPlayhouse Company.

22.6. Ibhunga

IBhunga latyunjwa nguMphathiswa wezoBugcisa neNkcubeko ukuze longamele lize liqinisekise ulawulo lwequmrhu olunobulungisa. IBhunga lineekomiti eziliqela ezingaphantsi kwalo ezifana neKomiti yezoBugcisa noKunyus'ingxowa-mali, eyeZemali, eyoPhicotho-zincwadi noLawulo lweQumrhu, eyeMicimbi yaBasebenzi neMivuzo ezikhokela nezincedisabaphathi abathi baqeshwe liBhunga. Jonga inqaku lama-20 - imbuyekezo.

22.7. National Film and Video Foundation

Eli ziko lifumene imali ebalelwa kwi-R2 061 851 kwiNational Film and Video Foundation ebulungiselelwe ukubamba umnyhadala wesithathu we-Brics Film Festival. Le mali iquka ukwenziwa komsitho wobusuku ekuvulwa ngabo iBrics Film Festival 2018

22.8. Abasebenzi abangundoqo

Ingqonyela nomlawuli wezobugcisa - Linda Bukhosini
Igosa eliyintloko yezemali - Amar Mohanparasadh
Umlawuli weenkonzo zenkxaso - Oscar Hlangu

23. Imisitho yakamva

Akukho misitho ibalulekileyo eyenzeke phakathi komhla wokwenziwa kwephepha elibonisa intsalela nomhla wokwenziwa kwale ngxelo.

24. Inkcitho engafanelekanga, engenanzuzo okanye eyilahleko

Akukho lahleko iphathekayo yenziwe ngenxa yokwaphula umthetho kwaye akukho nkcitho ingafanelekanga, engenanzuzo okanye eyilahleko eyenziwe ngonyaka ophele ngowama-31 kweyoKwindla 2019.

Amanqaku Eengxelo Zemali Zonyaka (liyaqhutywa)

	eyoKwindla 2019	eyoKwindla 2018
	R	R
25. linkonzo zodidi oluthile		
25.1. Iziko iPlayhouse Company lizifumene iinkonzo zodidi oluthile ezibenefuthe ekusebenzeni kwalo nakwiinjongo zalo zokuhambisa iinkonzo. Ezi nkonzo zodidi oluthile zinxulumene nerhafu ehlawulwe liSebe leMisebenzi kaRhulumente laseKZN zigqaliwe kwiingxelo zemali zonyaka.		
Irhafu ehlawulwe liSebe leMisebenzi kaRhulumente laseKZN	5 351 380	6 913 892
Ezi nkonzo zodidi oluthile zilandelayo azigqalwanga kwiingxelo zemali zonyaka.		
25.2. linkonzo zodidi oluthile ezinikwe liBhunga namalungu ekomiti aqeshwe nguRhulumente:		
Ummiselo kaNondyebo “ongezibonelelo zenzuzo yabasebenzi bakarhulumente nabakumanye amaziko” ubalula ukuba abasebenzi bakarhulumente kaZwelonke, owePhondo nakoweNgingqi okanye abasebenzi bamaziko, iiarhente nemibutho karhulumente abakulungelanga ukufumana imivuzo eyongezelweyo.		
Amalungu amathathu eBhunga nekomiti aqeshwe ngurhulumente ngoko ke akakhange afumane mirhumo ngokuhlalela iintlanganiso zeBhunga nezekomiti.		
26. Iziniki-maxabiso ezingenakurhoxiswa nezibophelelayo		
Stage Lifts - Tender awarded	27 169 051	-
Stage Lifts - capital commitment outstanding at year end	3 217 820	-
27. Ukumanya uhlahlo-lwabiwo mali nengxelo yokusebenza kwemali		
Intsalela iyonke (intsilelo) kwiingxelo nganye yokusebenza kwemali	4 866 730	(4 750 074)
Luhlengahlengisiwe ukulungiselela:		
Ukunyuka kwesibonelelo esiyinkunzi esivela kwiDAC	3 182 656	(3 528 384)
Ukunyuka kwezibonelelo ezifunyanwayo	829 173	(750 000)
Ukunyuka kwenxaso-mali yokuboniswa kweemveliso	229 596	-
Ukunyuka kwengeniso yeemveliso	(521 764)	(405 196)
Ukunyuka kwengeniso yentengiso yotywala neyezinye izinto	(476 318)	(722 801)
Ukunyuka kwengeniso yemali	(536 227)	(281 834)
Ukuhla kweendleko zokuvelisa	(1 647 466)	(5 535 324)
Ukuhla kweendleko zemivuzo yabasebenzi njengoko ezinye izithuba zingekazaliswa	(1 043 344)	(2 657 748)
Ukuhla kwezinto ezisetyenziswa ziphele, umbane nezokucoca	(1 404 050)	(1 110 298)
Ukuhla kweendleko zebhunga	82 663	(157 656)
(Ukunyuka) Ukuhla kweendleko zomnxeba	(182 426)	101 220
Ukuhla kweendleko zokukhathalela izinto nokuzilungisa	(1 607 349)	(638 830)
Ukuhla kwezinye iindleko zokusebenza	(1 508 330)	(1 582 055)
Intsilelo kwintengiso yempahla yexabiso	184 073	71 632
Ukuhla kwexabiso	18 119 343	16 209 570
Inkcitho eyinkunzi ebekelwe imali bucala kodwa engafakwanga kwiingxelo yokusebenza kwemali	(47 731 959)	(24 244 256)
Intsilelo eyintsalela ngokohlalo-lwabiwo mali oluvunyiweyo (kuquka necapex)	(29 164 998)	(29 982 034)



Amanqaku Eengxelo Zemali Zonyaka (liyaqhutywa)

28.1. Ukumanya uhlahlo-lwabiwo mali nengxelo yokusebenza kwemali - iindleko zokusebenza

INGXELO YOKUSEBENZA KWEMALI - IMALI EKHOYO NEQINGQIWEYO

	2019 IMALI EKHOYO	2019 UHLAHLO-MALI LWASEKUQALENI	2019 UHLAHLO-MALI OLUHLAZIYIWEYO	2019 UMAHLUKO	2019 UMAHLUKO
	R	R	R	R	%
INGENISO	101 840 029	80 908 198	99 731 993	2 108 036	
Izibonelelo	85 771 171	75 189 000	89 783 000	(4 011 829)	-4%
Ingeniso yokuvelisa	1 773 447	2 102 826	2 102 826	(329 379)	-16%
Amalizo nenkxaso-mali	3 561 851	-	3 791 447	(229 596)	-6%
Irenti engenileyo	553 085	471 153	471 153	81 931	17%
Ukuqeshisa ngeendawo zemiboniso, impahla yokudlala neesethi	2 980 474	2 099 332	2 129 332	851 142	40%
Ikhomishini yendawo yokubhukishela ukubukela imiboniso - iimveliso zangaphandle	475 689	173 644	173 644	302 045	174%
Indawo yentselo nezinye iintengiso	441 701	441 000	441 000	701	0%
Iinkonzo zodidi oluthile	5 351 380	-	-	5 351 380	
Ingeniso yamathuba athile	931 231	431 243	839 591	91 641	11%
INKCITHO	104 009 525	81 565 660	87 665 031	(16 344 494)	
Iindleko zokuvelisa	19 964 144	16 820 163	21 611 610	1 647 466	8%
Iindleko zabasebenzi	37 460 734	39 720 270	38 504 078	1 043 344	3%
Ingxelo yonyaka	51 175	82 636	52 636	1 461	3%
Imirhumo yabaphicothi-zincwadi bangaphandle	943 332	1 284 000	1 284 000	340 668	27%
Imirhumo yabaphicothi-zincwadi bangaphakathi	409 209	675 525	849 525	440 316	52%
Iindleko ezinxulumene nebhunga	644 085	601 422	561 422	(82 663)	-15%
Ucoceko nogutyulo	1 853 300	1 526 337	2 102 396	249 096	12%
Izinto ezisetyenziswa ziphele	881 317	1 471 327	1 573 799	692 482	44%
Umbane	4 015 728	4 727 296	4 727 296	711 568	15%
Ukhuseleko	3 700 814	3 604 689	4 271 017	570 203	13%
I-inshorensi	438 354	345 323	345 323	(93 031)	-27%
Iindleko zomthetho	181 988	24 164	80 000	(101 988)	-127%
Iintengiso	1 020 437	1 259 390	1 259 390	238 953	19%
Irhafu	5 351 380	-	-	(5 351 380)	
Ukulungisa nokukhathalela izinto	1 667 239	2 945 695	3 274 588	1 607 349	49%
Umnxeba	252 132	403 452	434 558	182 426	42%
Uqeqesho	306 661	342 400	322 400	15 739	5%
Iihambo - zakweli lizwe nezaphesheya kweelwandle	899 519	577 845	916 333	16 814	2%
Amanzi	533 113	605 286	605 286	72 173	12%
Ukuhla kwexabiso	18 119 342	-	0	(18 119 342)	100%
Iindleko gabalala	5 315 522	4 548 440	4 889 374	(426 148)	-9%
Intsilelo evela kwimisebenzi	(2 169 497)	(657 462)	12 066 962	(14 236 458)	
Inzala engenileyo	7 036 227	3 500 000	6 500 000	536 227	8%
Iintsalela yonyaka	4 866 730	2 842 538	18 566 962	(13 700 231)	

Iinguqu zohlalo-lwabiwo mali oluvunyiweyo ukuya kuhlahlo-lwabiwo mali lokugqibela

Ezinye izicelo zengeniso eyinkunzi zirhoxiselwe unyaka ongaphandle ngenxa yobuncinane benkxaso-mali evela kwiDAC.

Iinguqu eziphakathi kohlahlo-lwabiwo mali oluvunyiweyo nolokugqibela zisisiphumo semali eseleyo okanye ukwabiwa kwakhona kwemali ekuhlalo-lwabiwo mali.

Amanqaku Eengxelo Zemali Zonyaka (liyaqhutywa)

Ingcaciso yomahluko obonakalayo

Phakathi kwenyanga yeDwarha ngo-2018 ukuya ekupheleni keyoKwindla ngo-2019 bekufakelwa iqonga elitsha le-opera. Akukho zimveliso zibonisiweyo ngeli xesha nto leyo iyithobileyo ingeniso yeemveliso.

Iziko iPlayhouse Company lifumene inkxaso-mali yokuvelisa umsitho weBRICS 2018 neeprojekthi zeDAC zokufukamisa. Kubekho imali esalayo yaza yabuyiselwa kwiziko ebelikhuphe inkxaso-mali.

Imali eyongiwe kumrhumo ohlawulwa uMphicothi-zincwadi Jikelele ngo-2018 kuba enye imali uyihlawulwe kunyaka ongaphambili. Uhlahlo-lwabiwo mali lwalusekelwe kwimali eyayiphakanyiswe kwiminyaka egqithileyo. Kubekho imali eyongiweyo kwiiyure ezichithwe xa kusenziwa uphicotho-zincwadi.

Ingeniso yabaqeshi bangaphandle ibe ngaphaya kwaleyo ibiqingqiwe. Kuboniswe iimveliso zabaqeshi bangaphandle ezingama-59 nangona bekulindeleke ezingama-35.

Ingeniso yendawo yokubhukishela izihlalo inyukile ngokungqinelana nokunyuka kwemiboniso yabavelisi bangaphandle.

Iinkonzo zodidi oluthile njengoko zibhengezwe kwinqaku lama-25.

Indawo eqeshiselwa imisitho ifunwe ngamandla nto leyo ikhokelele ekubeni igqithe ngaphaya kwemali ebizibekelwe. Intengiso yesinyithi esidala esivela kwinqonga le-Opera ibingabekelwanga mali.

Kube yimfuneko ukuhlengahlengisa inkqubo yezobugcisa emva kokuba iDAC ivumile embindini wonyaka ukuba kulungiswe izinto zokunyusa iqonga le-opera. Imali eyongiwe kwimveliso eyenziwa ekupheleni konyaka isetyenziselwe ukuphucula ezinye iiprojekthi ezenzelwa ixesha leziyolo ezifana nomnyhadala wezobugcisa waseOkwethu kunye nezinye iimveliso ezilungiselelwe ixesha leziyolo. Imali eseleyo iza kusetyenziswa kwimveliso ezilungiselelwe ixesha leziyolo lika-2019.

Kongiwe imali kumrhumo woMphicothi-zincwadi Jikelele kuba enye imali ihlawulwe kunyaka ogqithileyo.

Imali yophicotho-zincwadi lwangaphakathi engahlawulwanga kulo nyaka-mali ihlawulwa kwikota yokuqala yonyaka omtsha.

Imirhumo engabekelwanga mali ihlawulwe amalungu eBhunga endaweni yexesha lokulungiselela.

Kongiwe imali ngenxa yamaphulo akhoyo okonga imali.

Imali eyongiwe embaneni kuba kuthengwe izibane ezonga umbane nezihlala ixesha elide. Kongiwe imali kwezinye izinto ezisebenziseka ziphele ngenxa yamaphulo okonga imali. Iqonga leOpera lilungisiwe yaye kuye kwanqunyanyiswa ukuthengwa kwezinto ezisebenziseka ziphele de kuqinisekiswa ukuba ziziphi ezinye izinto ezikhethekileyo ekufuneka ukuba zithengwe.

Kongiwe umbane kuba iqonga le-Opera belingasetyenziswa ukususela ngeyeDwarha ukuya kuthi ga ngeyoKwindla ngo-2019.

Abekho oonogada abasetyenzisiweyo ngethuba iqonga le-Opera belingasebenzi.

Izixhobo ezithengwe apha anyakeni zongeze kwishedyuli ye-inshorensi. Inkampani ye-inshorensi isithumele emva kwexesha isavenge sonyaka ogqithileyo esihlawulwayo.

Kuye kwafunwa ingcebiso yomthetho malunga nezinto ebezingabekelwanga mali ekuqaleni.

Imali yentengiso yequmrhu isetyenziselwe ukuxhasa intengiso yeemveliso ukuze zifikelele kubo bonke abathathi-nxaxheba abangundoqo.

Iinkonzo zodidi oluthile njengoko zibhengezwe kwinqaku lama-25.

Imali ekhoyo iye yabekelwa bucala ukuze yenze umsebenzi wokwakha iqonga le-Opera.

Kongiwe imali ngenxa yenkqubo entsha yolawulo lweminxeba efakwe apha anyakeni.

Uqeqesho olucwangcisiweyo olungaqhubekanga ngenxa yokungafumaneki kwabasebenzi ebekufanel'uba baqeqeshwe.

Kongiwe imali ngenxa yamaphulo akhoyo okonga imali.

Into engeyiyo engenisa imali nengabekelwa mali yonke iminyaka.

Imali eyongiwe kwiindleko eziliqela ngoncedo lwamaphulo okonga imali.

Imali etyalwe kwiibhanka inika inzala encumisayo kakhulu.

Amanqaku Eengxelo Zemali Zonyaka (liyaqhutywa)

28.2. Ukumanya uhlahlo-lwabiwo mali nengxelo yokusebenza kwemali - inkcitho yemali eyinkunzi

IZONGEZO KWIMPAHLA YEXABISO EZINZILEYO - IMALI EKHOYO NEQINGQIWEYO

	2019 IMALI EKHOYO	2019 UHLAHO- MALI LWASEKUQA- LENI	2019 UHLAHO- MALI OLUHLAZIY- IWEYO	2019 UMAHLUKO	2019 UMAHLUKO	Ingcaciso yomahluko obonakalayo
	R	R	R	R	%	
Izixhobo zase- ofisini	641 678	100 000	725 000	83 322	11%	Imali elungiselelwe ukuthenga ezinye zezixhobo zaseofisini ibifuneka ngokukhawuleza ukuze kuthengwe izixhobo ezisebenzayo endaweni yezo bezingasebenzi. Ukuthengwa kwezi zixhobo kucwangciselwe ukwenziwa kunyaka-mali omtsha.
Izixhobo zeekhomyutha	433 301	225 000	552 528	119 227	22%	Imali elungiselelwe ukuthenga iseva entsha yotshintshiselwano efuneka ngamandla ukuze iziko liqhubeka nokusebenza ngokukuko. Le seva iza kuthengwa kunyaka-mali omtsha.
Izixhobo zeqonga	343 907	16 770 000	3 326 748	2 982 841	90%	Imali eyongiwe kwezinye iiprojekthi iza kusetyenziswa kwiprojekthi yokufakela izinto ezinyusa iqonga leOpera.
Izakhiwo	27 363 738	-	43 127 683	15 763 945	37%	Zikhutshiwe iziniki-maxabiso yaye uphele unyaka-mali umsebenzi sele uqhubeka.
Inkcitho iyonke	28 782 624	17 095 000	47 731 959	18 949 335	40%	

Iinguqu ezikuhlahlo-lwabiwo mali oluvunyiweyo ukuya kuhlahlo-lwabiwo lokugqibela zidalwe yimali eseleyo kuhlahlo-mali kunye nenkxaso-mali entsha efunyenwe kwiDAC.

Inkxaso-mali yeeprojekthi ezingundoqo ifunyenwe ngomhla wama-31 kweyoKwindla ngo-2018 yaye le nkxaso-mali kuye kwafuneka iziswe kunyaka ophela ngomhla wama-31 kweyoKwindla ngo-2019 ukuze kumiliselwe kuze kuqaliswe umsebenzi kwezi projekthi.



▼ South African Women's Arts Festival: Kiddies Day





an agency of the
Department of Arts & Culture

RP220/2019

ISBN: 978-0-621-47522-7

www.playhousecompany.com